

Manuals+

[Q & A](#) | [Deep Search](#) | [Upload](#)

manuals.plus /

- › [GODOX](#) /
- › [Godox V860II-S V860IIS Flash for Sony User Manual](#)

GODOX v860iis

Godox V860II-S V860IIS Flash for Sony User Manual

Model: v860iis

1. INTRODUCTION AND OVERVIEW

The Godox V860II-S is a high-performance TTL Li-ion battery camera flash designed for Sony DSLR cameras. It integrates advanced features such as a built-in Godox 2.4G X wireless system, high guide number, and versatile flash modes to provide a superior lighting experience for photographers.

This manual provides detailed instructions on the proper use, setup, and maintenance of your V860II-S flash unit. Please read this manual carefully before use to ensure safe operation and optimal performance.



Image 1.1: The Godox V860II-S flash unit with its primary accessories, including the battery, charger, and protective bag.

Key Features:

- **Compatibility:** Fully compatible with Sony DSLR cameras and TTL autoflash systems.
- **2.4G Wireless Transmission:** Built-in Godox 2.4G X wireless system for all-in-one functions and extended transmission distance (up to 100 meters).
- **Versatile Functions:** Supports TTL auto flash, manual flash, multi flash, 1/8000s High-Speed Sync (HSS), front and rear curtain sync, and modeling flash.
- **Rechargeable Li-ion Battery:** Powerful 2000mAh Li-ion battery provides up to 650 full power flashes with a fast 1.5s recycle time.
- **High Guide Number:** GN60 (m ISO 100, @200mm) for powerful light output.
- **Zoom Coverage:** Auto and manual zoom from 20mm to 200mm.
- **Flexible Head Design:** Flash head tilts from -7° to 90° and rotates 180° horizontally for bounce flash capabilities.



VING
Pioneering Li-Ion Camera Flash

V860II(S)

GN 60

GN60

TTL

Auto Flash

⚡⚡⚡

Multi Flash

📡

Master/ Slave

S1/S2

Auto Exposure

HS ⚡

High Speed Sync

ZOOM
← 20 ~ 200mm →

20mm-200mm

📶

Built-in 2.4GHz

Image 1.2: Visual representation of the key features of the Godox V860II-S, including GN60, TTL, Multi-flash, Master/Slave, S1/S2, HSS, Zoom, and Built-in 2.4G wireless.

2. SAFETY INFORMATION

To prevent damage to your product or injury to yourself or others, read the following safety precautions completely before using this equipment. Keep these safety instructions where all who use the product will read them.

- Do not disassemble or modify the flash unit. If the product breaks down, send it back to the authorized maintenance center.
- Keep this product dry. Do not handle with wet hands or immerse in water.
- Do not use the flash unit in the presence of flammable gases, chemicals, or other materials.

- Do not touch the flash tube when it is firing or immediately after. High voltage is present.
- Keep out of reach of children.
- Do not leave the flash unit in high-temperature environments, such as in a car on a hot day.
- Use only the specified battery and charger.
- Protect the flash unit from strong impacts or vibrations.

3. PRODUCT COMPONENTS

The Godox V860II-S package typically includes the following items:

- 1x Godox V860II-S Flash Unit
- 1x Li-ion Battery (VB18)
- 1x Battery Charger
- 1x Charging Cable
- 1x Protective Bag
- 1x Mini Stand (H-Bracket)
- 1x Instruction Manual (this document)

4. PARTS IDENTIFICATION

Familiarize yourself with the different parts of the Godox V860II-S flash unit:

Details



Diffuser & Reflector

Sync Port & USB Port & Wireless Control Port

Battery Compartment

Fast Transmission Contacts

Compatible for:

Godox V860II sony flash can be used on the following camera models:
A6000/A6300/A6500/A7/A9/A7S/A7R/A7M2/A7SM2/A58/A77M2/A99M2/RX10/a77II/A7RII/A7RIII/a7II/a7R/a58/a99/ILCE6000L, etc.

Image 4.1: Detailed view of the Godox V860II-S showing the sync port, USB port, wireless control port, battery compartment, and fast transmission contacts.

- **Flash Head:** Contains the flash tube and zoom mechanism.
- **LCD Panel:** Displays current settings and status.
- **Control Buttons:** Mode, Sync, Set, Directional buttons, On/Off switch.
- **Hot Shoe:** Connects the flash to the camera.
- **Battery Compartment:** Houses the Li-ion battery.
- **Sync Port:** For connecting to external sync cables.
- **USB Port:** For firmware updates.
- **Wireless Control Port:** For connecting wireless control accessories.
- **Diffuser/Reflector:** Built-in for light modification.

5. SETUP

5.1 Battery Installation

The V860II-S uses a dedicated Li-ion battery. Ensure the battery is fully charged before first use.

1. Open the battery compartment cover on the side of the flash unit.
2. Insert the VB18 Li-ion battery into the compartment, aligning the contacts correctly.
3. Close the battery compartment cover securely.



Image 5.1: The rechargeable Li-ion battery and its dedicated charger, highlighting the convenience and power efficiency compared to traditional AA batteries.

5.2 Mounting on Camera

To attach the flash unit to your camera:

1. Slide the hot shoe of the flash unit completely into the camera's hot shoe.
2. Rotate the locking ring on the flash unit clockwise until it is securely tightened.

5.3 Power On/Off

To power on the flash, slide the ON/OFF switch to the 'ON' position. The LCD panel will illuminate. To power off, slide the switch to the 'OFF' position.

6. OPERATING INSTRUCTIONS

6.1 Flash Modes

Press the **MODE** button to cycle through the available flash modes: TTL, Manual (M), and Multi (Stroboscopic).

6.1.1 TTL Autoflash Mode

In TTL mode, the flash output is automatically adjusted by the camera to achieve correct exposure. This is the most convenient mode for general shooting.

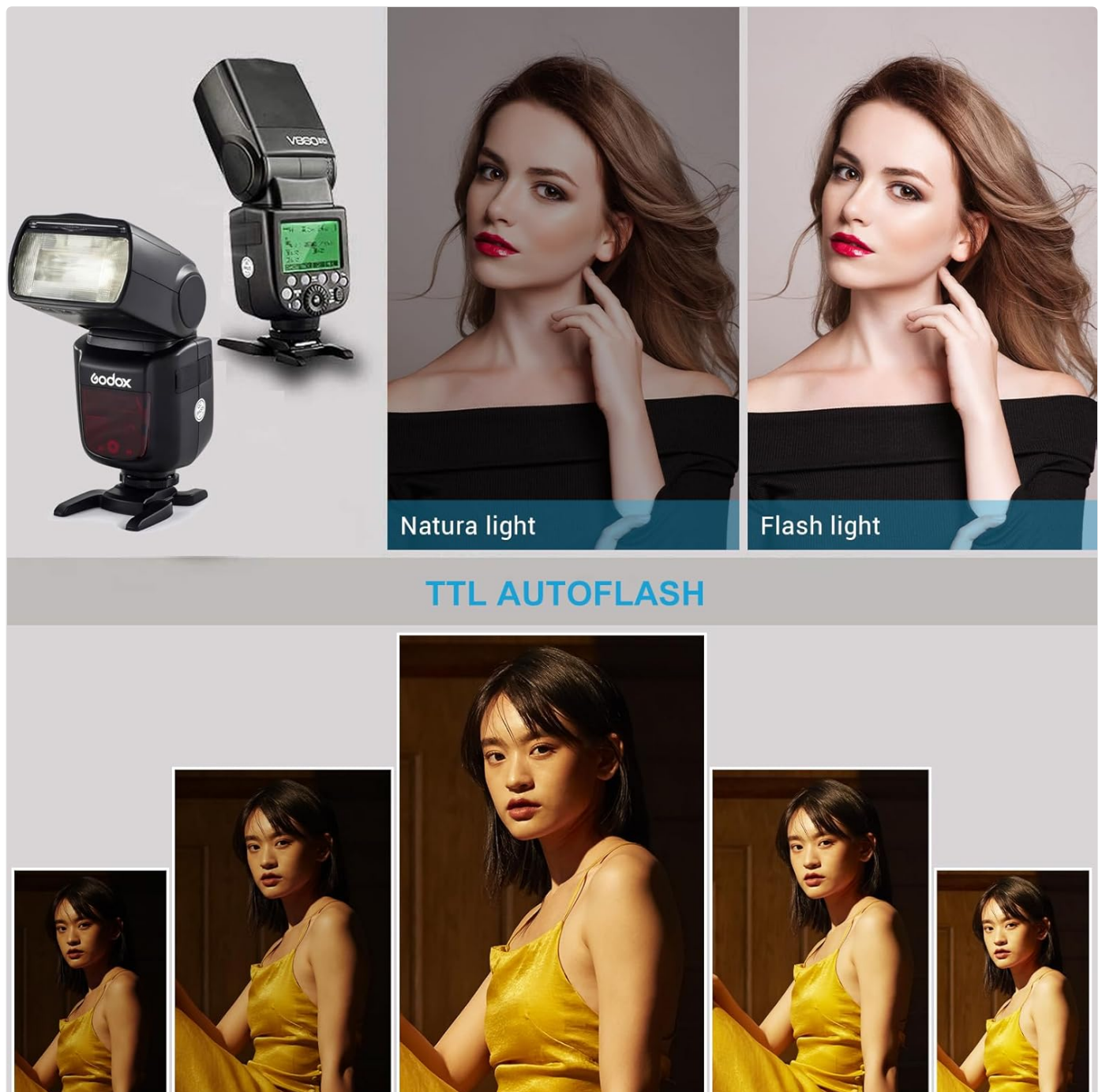


Image 6.1: Comparison of natural light versus flash light using TTL autoflash, demonstrating automatic exposure adjustment.

6.1.2 Manual Flash Mode (M)

In M mode, you manually set the flash output power from 1/1 (full power) to 1/128 in 1/3 stop increments. This mode offers precise control over lighting.

First and Second Curtain Sync, Multi Stroboscopic Flash

With a slow shutter speed, you can create a light train following the subject. The flash fires right before the shutter closes.

High Powered and Speedy Recycling Li-ion Battery
2000mA Li-ion Battery, max.1.5s recycle time and 650 full power pops.

Long Runtime
Li-ion Polymer Battery

Li-ion Battery Flash

AA-Battery Flash

The flash output is adjustable from 1/1 full power to 1/128th power in 1/3rd stop increments.

Image 6.2: Illustrates the adjustable flash output from 1/1 full power to 1/128 power in 1/3rd stop increments, along with examples of first and second curtain sync and multi stroboscopic flash.

6.1.3 Multi Flash Mode (Stroboscopic)

Multi flash fires a series of rapid flashes to capture multiple images of a moving subject in a single photograph. You can set the number of flashes, frequency (Hz), and flash power.

6.2 Wireless Transmission (Master/Slave)

The V860II-S can function as both a master unit to control other Sony flashes or Godox X-system flashes, and as a slave unit triggered by other flashes.

Master & Slave Flash



Godox V860II-S as a master unit to control Sony camera flashes e.g.HVL-F60M,HVL-F43M and HVL-F32M via wireless;
As a slave unit under control of Sony camera flashes e.g.HVL-F60M, HVL-F43M and HVL-F32M.

Two Transmitting Styles to offer creative light effect,
Built-in Godox 2.4G wireless X system offers all-in-one-
functions and 100 meters further transmission distance.

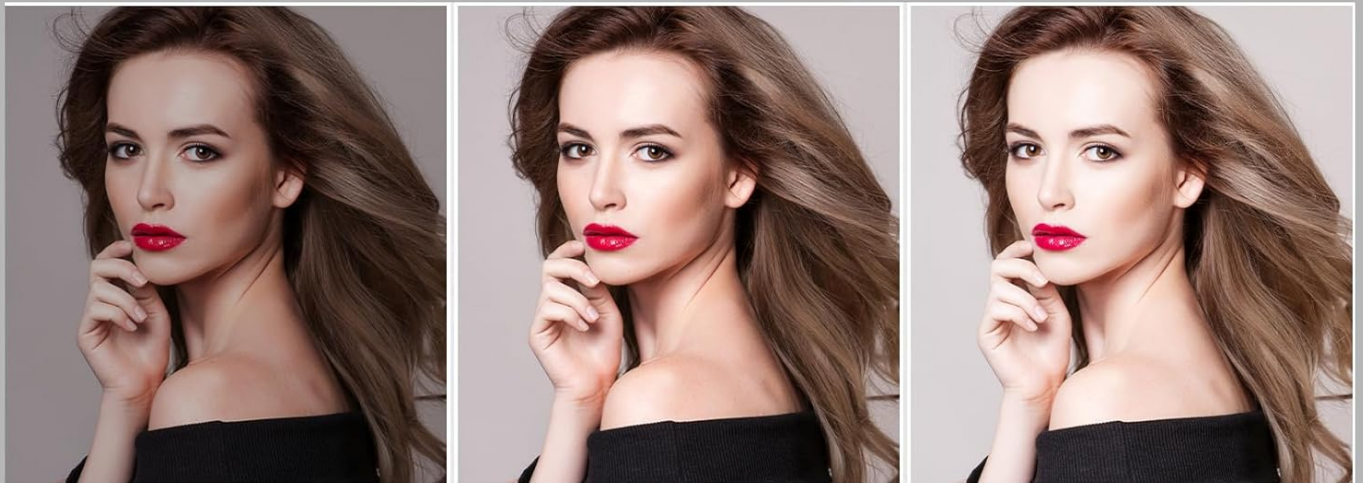
Image 6.3: Diagram showing the Godox V860II-S acting as a master unit to control Sony camera flashes wirelessly, and as a slave unit under the control of other flashes or triggers.

6.3 High-Speed Sync (HSS)

HSS allows the flash to synchronize with all shutter speeds up to 1/8000s, enabling you to use flash with wide apertures in bright conditions.



High-Speed Sync



-1EV

0EV

+1EV

Flash Exposure Compensation

Image 6.4: Examples demonstrating the effect of High-Speed Sync for freezing motion and Flash Exposure Compensation for adjusting brightness.

6.4 Flash Exposure Compensation (FEC)

FEC allows you to fine-tune the flash output in TTL mode. Adjust the value from -3 to +3 stops in 1/3 stop increments using the dial.

6.5 Zoom Coverage Adjustment

The flash head's zoom coverage can be set automatically or manually from 20mm to 200mm to match the lens focal length. Press the **ZOOM** button to adjust.

GN60 Powerful Index Wide Range Focus



GN60 High Index



20-200mm
Focal Length Range



High Brightness Output

Focal Length Range

20-200mm

20mm

50mm

85mm

200mm

35mm

70mm

100mm



Image 6.5: Illustration of the flash's focal length range from 20mm to 200mm, showing how the light spread changes with zoom settings.

6.6 Flash Head Rotation and Tilt

The flash head can be tilted vertically from -7° to 90° and rotated horizontally 180° to the left and right. This allows for bounce flash photography, creating softer and more natural lighting.

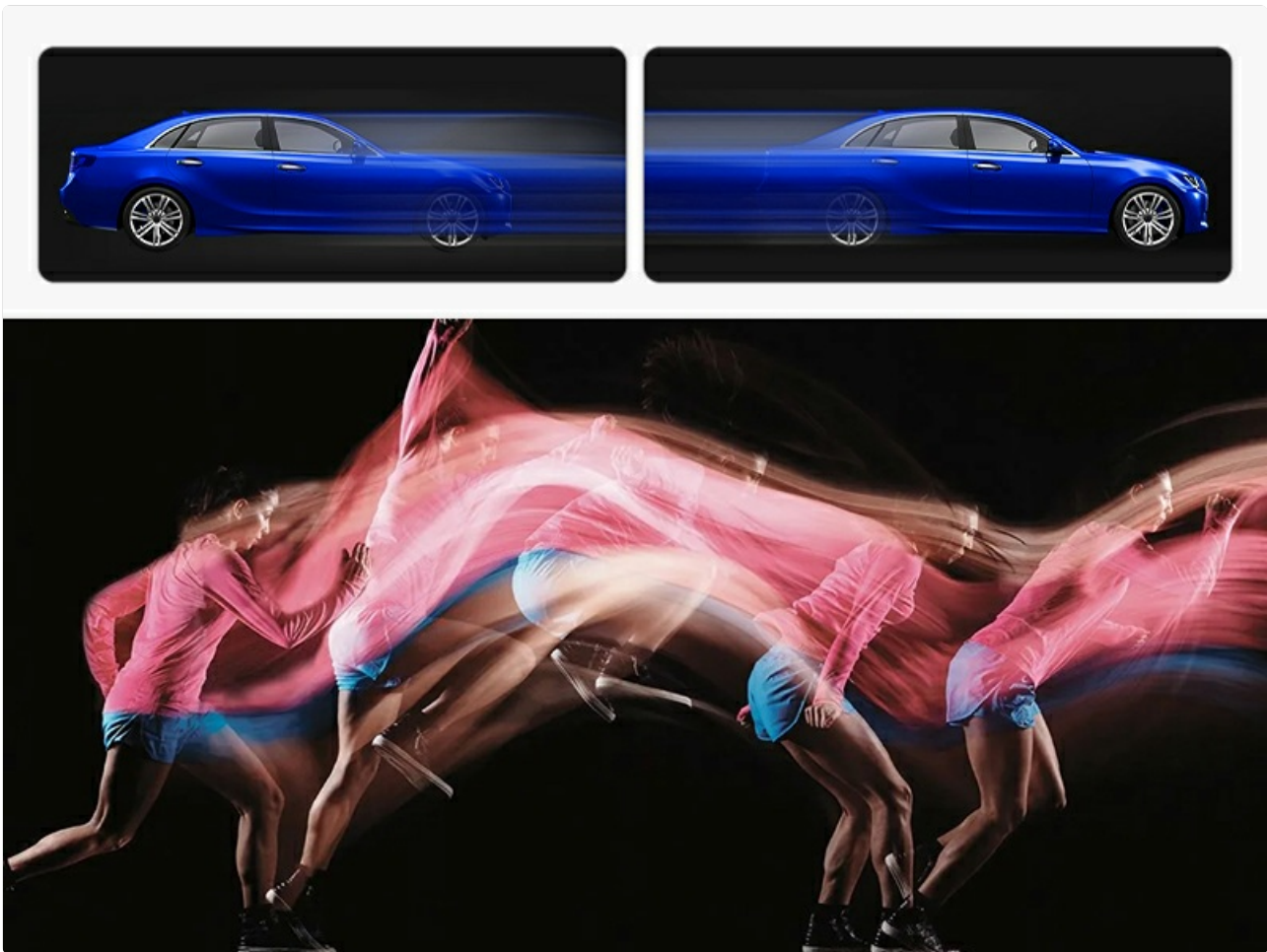


Image 6.6: Diagram illustrating the full range of motion for the flash head, including vertical tilt from -7° to 90° and 360° horizontal rotation.

7. MAINTENANCE

7.1 Cleaning

Regularly clean the flash unit with a soft, dry cloth. For stubborn dirt, use a cloth lightly dampened with water or a neutral detergent. Avoid using strong solvents or abrasive cleaners.

7.2 Battery Care

To prolong battery life:

- Charge the battery fully before long periods of storage.
- Store the battery in a cool, dry place.
- Avoid extreme temperatures.
- If not used for a long time, charge and discharge the battery every three months.

7.3 Firmware Update

The V860II-S supports USB firmware updates. Visit the official Godox website for the latest firmware and instructions to ensure optimal compatibility and performance.

8. TROUBLESHOOTING

If you encounter issues with your Godox V860II-S, refer to the following common problems and solutions:

Problem	Possible Cause	Solution
Flash does not fire.	Battery low or depleted; Flash not securely mounted; Flash in sleep mode; Incorrect flash mode.	Charge or replace battery; Re-mount flash securely; Press any button to wake flash; Check flash mode settings.
Flash output is too dark/bright.	Incorrect flash exposure compensation (FEC); Manual power setting too low/high; Subject too far/close.	Adjust FEC; Adjust manual power setting; Move closer/further from subject.
Flash overheats.	Excessive continuous firing.	Allow flash to cool down. The flash has overheating protection and will temporarily stop firing.
Wireless trigger not working.	Incorrect channel/group settings; Distance too far; Interference.	Ensure master and slave units are on the same channel and group; Reduce distance; Change channel.

9. SPECIFICATIONS

Feature	Specification
Model	V860II-S
Guide Number (GN)	60 (m ISO 100, @200mm)
Flash Coverage	20 to 200mm (Auto/Manual Zoom)
Flash Duration	1/300s to 1/20000s
Exposure Control System	TTL Autoflash, Manual Flash, Multi Flash
Flash Exposure Compensation (FEC)	±3 stops in 1/3 stop increments
Sync Mode	High-Speed Sync (up to 1/8000s), First-Curtain Sync, Second-Curtain Sync
Multi Flash	Provided (up to 90 times, 100Hz)
Wireless Flash Function	Master, Slave, Off
Controllable Slave Groups	3 (A, B, C)
Transmission Range	Approx. 100m (2.4G Wireless)
Power Source	11.1V/2000mAh Li-ion Polymer Battery
Recycle Time	Approx. 1.5s (Full Power)
Full Power Flashes	Approx. 650
Dimensions (W x H x D)	9.06 x 3.15 x 8.27 inches (230 x 80 x 210 mm)
Weight (with battery)	1.19 pounds (540g)

10. WARRANTY AND SUPPORT

Godox products are designed and manufactured to the highest quality standards. For warranty information and technical

support, please refer to the warranty card included with your product or visit the official Godox website. Keep your purchase receipt as proof of purchase for warranty claims.

For further assistance, you may contact Godox customer service or your local distributor.

© 2024 Godox. All rights reserved.