

Haswing 4333793029

Haswing Quick Release Bracket Instruction Manual

Model: 4333793029

INTRODUCTION

This manual provides comprehensive instructions for the installation, operation, and maintenance of your Haswing Quick Release Bracket. This bracket is designed to facilitate the quick installation and removal of Haswing Cayman trolling motors and other compatible electric steer motors. Its robust design ensures a rigid mounting platform, minimizing noise and movement during use.

SAFETY INFORMATION

- Always ensure all fasteners are securely tightened before operating your trolling motor.
- Do not exceed the recommended weight or size limits for the bracket.
- Regularly inspect the bracket for any signs of wear, damage, or corrosion. Replace damaged components immediately.
- Keep hands and loose clothing clear of moving parts during installation and removal.
- Store the bracket and associated hardware in a dry, secure location when not in use.

PACKAGE CONTENTS

Verify that all components listed below are present in your package:

- Quick Release Bracket (Main Plate)
- Mounting Base (Center Puck)
- Stainless Steel Hardware (Screws, Bolts, Washers)
- Locking Handle/Pin



Image: The Haswing Quick Release Bracket shown with its accompanying stainless steel screws and locking pin.

QUICK RELEASE BRACKET

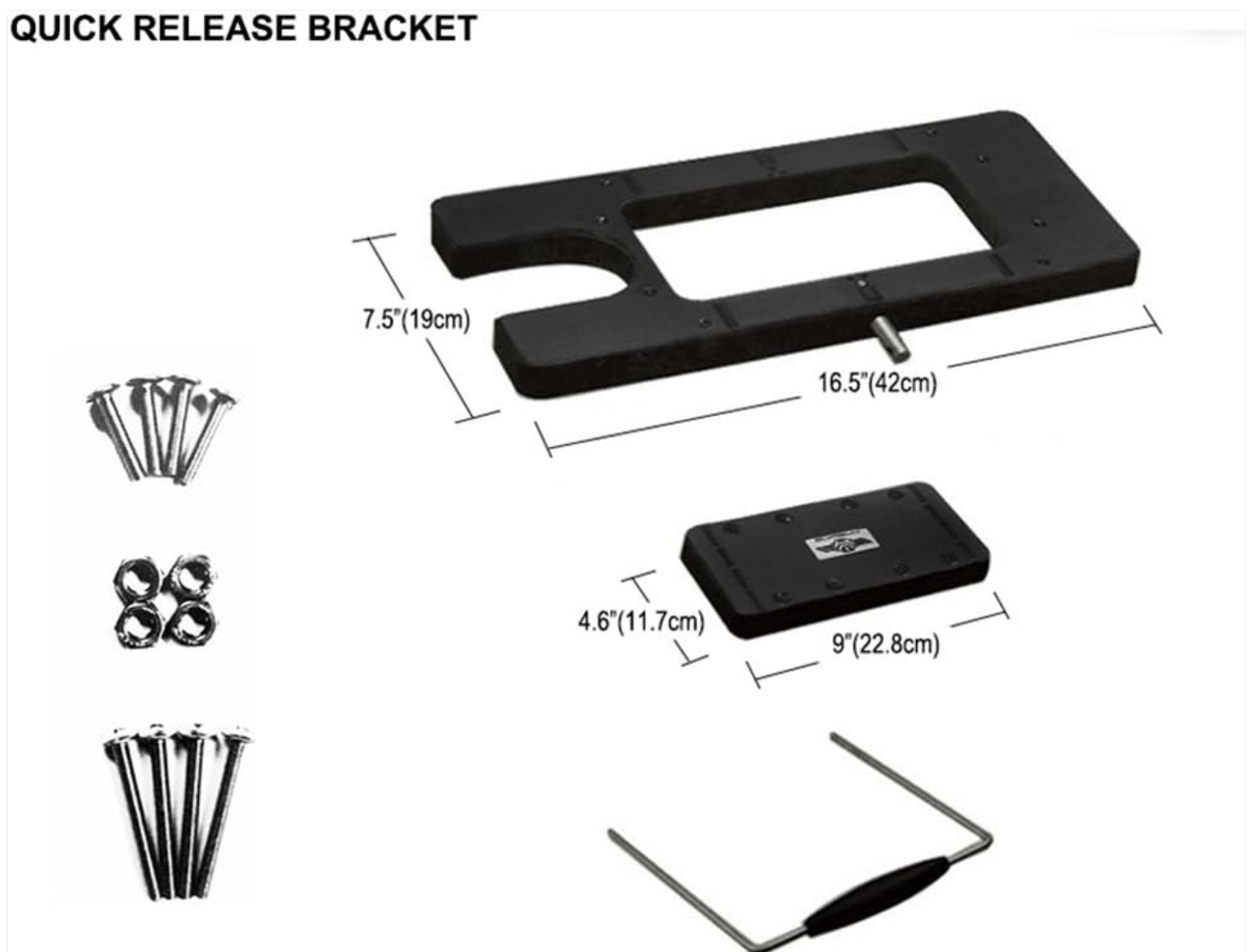


Image: A diagram illustrating the dimensions of the quick release bracket (16.5" x 7.5") and its base (9" x 4.6"), along with representations of the included screws, washers, and locking pin.

PRODUCT OVERVIEW AND COMPONENTS

Familiarize yourself with the key components of the Quick Release Bracket:

- **Motor-Bracket:** The upper plate that attaches to the trolling motor.

- **Center-Puck:** The lower base plate that mounts permanently to the boat deck.
- **Locking-Handle:** The U-shaped pin that secures the Motor-Bracket to the Center-Puck.
- **Bracket-Bolt:** Additional bolt for securing the trolling motor to the Motor-Bracket.



Image: An annotated diagram highlighting the Motor-Bracket, Center-Puck, Locking-Handle, and Bracket-Bolt components of the quick release system. A padlock icon indicates an optional security feature (padlock not included).

SETUP AND INSTALLATION

Follow these steps for proper installation of the Quick Release Bracket:

1. Step 1: Install the Center Puck to the Front Deck.

Position the Center-Puck (lower base plate) on the desired location on your boat's front deck. Ensure the surface is flat and stable. Mark the drilling points through the pre-drilled holes on the puck. Drill pilot holes if necessary, then secure the Center-Puck using the provided stainless steel screws. Ensure it is firmly attached.

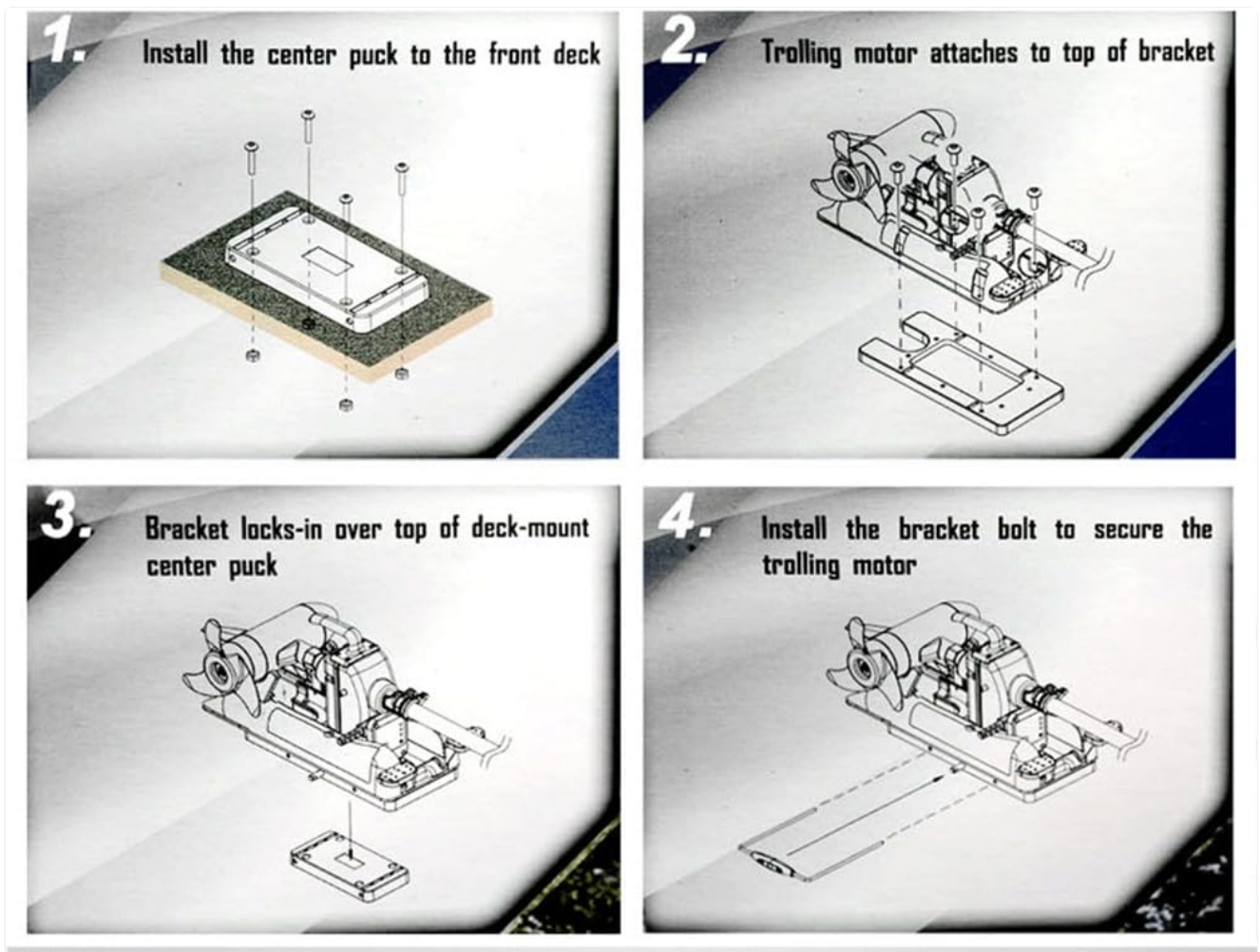


Image: Diagram illustrating the installation of the Center-Puck (base plate) onto the boat deck using screws.

2. Step 2: Attach the Trolling Motor to the Motor-Bracket.

Align your trolling motor's mounting base with the Motor-Bracket (upper plate). Secure the trolling motor to the Motor-Bracket using its original mounting hardware or the provided bracket bolts, ensuring a tight and stable connection.



Image: Diagram showing the trolling motor being installed onto the upper part of the quick release bracket.

3. Step 3: Lock the Bracket onto the Center Puck.

With the trolling motor attached to the Motor-Bracket, align the Motor-Bracket with the Center-Puck installed on the boat deck. Lower the Motor-Bracket onto the Center-Puck, ensuring the locking mechanism engages. Insert the Locking-Handle (U-shaped pin) through the designated holes to secure the two parts together. A positive locking mechanism ensures a rigid connection.

4. Step 4: Secure with Bracket Bolt (Optional).

For additional security, insert the Bracket-Bolt through the appropriate hole and tighten it. This further secures the trolling motor to the bracket system. An optional padlock (not included) can be used with the locking handle for theft deterrence.



Image: A Haswing trolling motor securely mounted on the quick release bracket, attached to the bow of a boat.

OPERATING INSTRUCTIONS

The Quick Release Bracket is designed for easy attachment and detachment of your trolling motor.

Attaching the Trolling Motor:

1. Ensure the Center-Puck is securely mounted to your boat deck.
2. With the trolling motor attached to the Motor-Bracket, align the Motor-Bracket over the Center-Puck.
3. Lower the Motor-Bracket until it seats firmly onto the Center-Puck.
4. Insert the Locking-Handle (U-shaped pin) through the aligned holes to secure the bracket.
5. (Optional) Insert and tighten the Bracket-Bolt for added security.

Detaching the Trolling Motor:

1. (Optional) Loosen and remove the Bracket-Bolt.
2. Remove the Locking-Handle (U-shaped pin) from the bracket.
3. Carefully lift the Motor-Bracket with the attached trolling motor straight up from the Center-Puck.
4. Store the trolling motor and Motor-Bracket in a safe location.

MAINTENANCE

Proper maintenance will extend the life of your Quick Release Bracket:

- **Cleaning:** After each use, especially in saltwater environments, rinse the bracket with fresh water to remove salt, dirt, and debris. Wipe dry with a clean cloth.
- **Inspection:** Periodically inspect all components for cracks, wear, or deformation. Check that all screws and bolts are tight.
- **Lubrication:** Apply a small amount of marine-grade lubricant to the locking pin and any moving parts to ensure smooth operation and prevent corrosion.
- **Storage:** When not in use for extended periods, store the bracket in a dry, cool place away from direct sunlight.

TROUBLESHOOTING

Problem	Possible Cause	Solution
Bracket difficult to attach/detach.	Corrosion or debris in locking mechanism; misalignment.	Clean and lubricate the locking pin and mating surfaces. Ensure proper alignment before attempting to attach/detach.
Trolling motor feels loose on the bracket.	Mounting screws loose; locking pin not fully engaged; bracket damaged.	Tighten all mounting screws on both the motor and the bracket. Ensure the locking pin is fully inserted. Inspect the bracket for damage and replace if necessary.
Excessive noise/movement during operation.	Loose connections; bracket not fully secured.	Verify all installation steps, ensuring the Center-Puck is firmly mounted to the boat and the Motor-Bracket is securely locked onto the Center-Puck. Check for any play in the trolling motor's own mounting to the Motor-Bracket.

SPECIFICATIONS

Feature	Detail
Product Dimensions (Overall)	17"H x 8.6"W x 2"D (approx. 43.2cm H x 21.8cm W x 5.1cm D)
Motor-Bracket Size	16.5" x 7.5" (approx. 42cm x 19cm)
Center-Puck Base Size	9" x 4.6" (approx. 22.8cm x 11.7cm)
Material	Ultra durable composite plastic, Stainless steel hardware

Feature	Detail
Color	Black
Item Weight	3.39 pounds (approx. 1.54 kg)
Mounting Type	Bow Mount
Compatibility	Haswing Cayman trolling motors and competitive electric steer motors

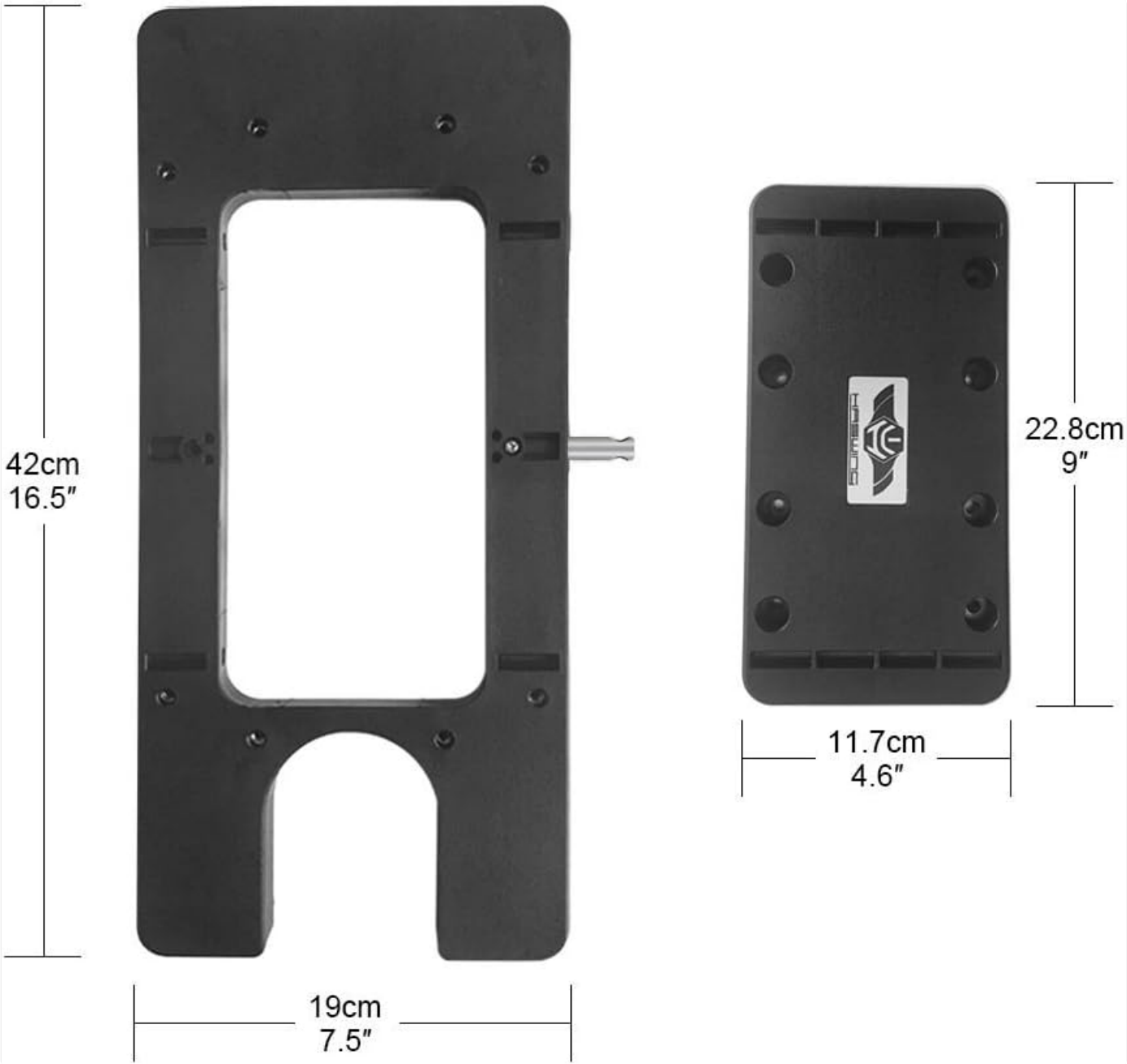


Image: Top-down view of the Quick Release Bracket showing its overall length of 16.5 inches (42 cm) and width of 7.5 inches (19 cm), alongside the base plate dimensions of 9 inches (22.8 cm) by 4.6 inches (11.7 cm).

WARRANTY AND SUPPORT

For warranty information or technical support regarding your Haswing Quick Release Bracket, please refer to the official Haswing website or contact their customer service directly. Keep your purchase receipt as proof of purchase. You can visit the official Haswing Store on Amazon for more products and information[Haswing Store](#)

