

**T3 76583**

## **T3 Interchangeable Custom Blend Ceramic Three Barrel Professional Curling Iron Set**

Model: 76583

### **PRODUCT OVERVIEW**

The T3 Interchangeable Custom Blend Ceramic Three Barrel Professional Curling Iron Set offers unparalleled versatility for creating a variety of hair styles. This innovative tool features a single base with three interchangeable wand barrels, allowing for endless styling possibilities from playful beachy waves to soft, loose curls. Designed for ease of use and optimal results, it simplifies your styling routine while delivering professional-grade performance.

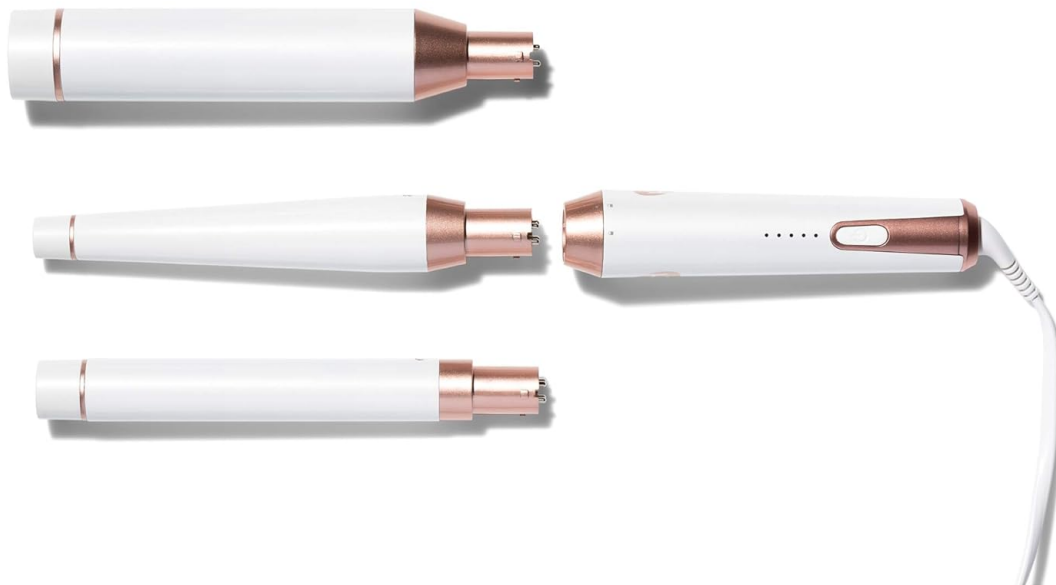


Image: The T3 Curling Iron Set, showcasing the main handle and three distinct interchangeable barrels.

Your browser does not support the video tag.

Video: An introduction to the T3 Whirl Trio Interchangeable Styling Wand Set, highlighting its key features and versatility.

## SETUP AND ASSEMBLY

The T3 curling iron features an intuitive interchangeable design for quick and easy setup. To attach a barrel, align the barrel with the base and push firmly until it clicks into place. To detach, ensure the device is cool and unplugged, then twist the locking mechanism to the 'unlock' position and gently pull the barrel away from the base.

Interchangeable design  
provides versatile styling to effortlessly create  
glamorous curls, beachy waves and  
everything in between.



\*Additional barrels sold separately.

Image: A close-up view illustrating the interchangeable design of the T3 curling iron, with a barrel being connected to the handle.

## Secure locking mechanism for easy interchangeability.

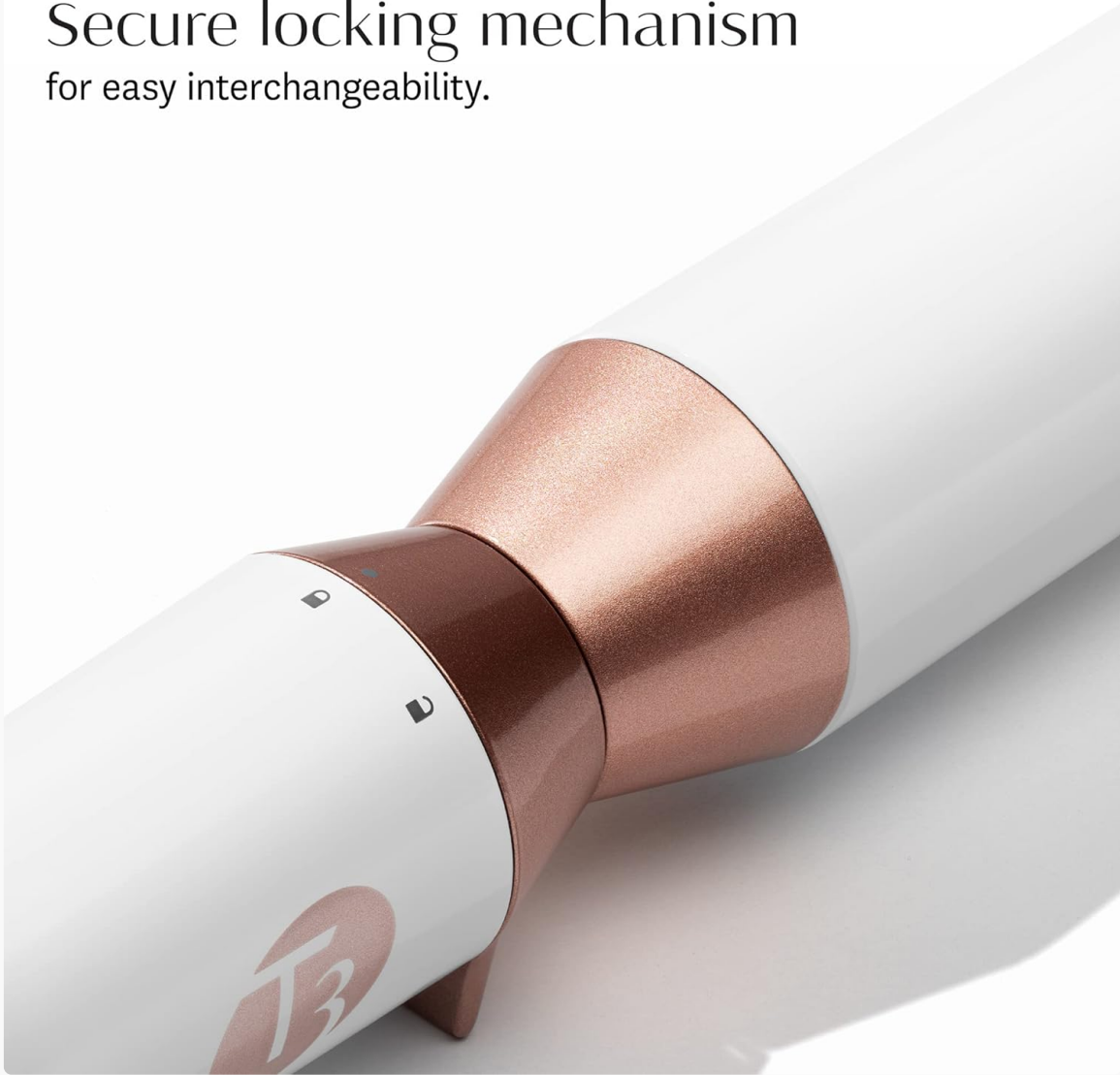


Image: A detailed view of the secure locking mechanism, indicating the lock and unlock positions for barrel attachment.

Your browser does not support the video tag.

Video: A demonstration of the T3 Convertible Collection's interchangeable design, showing how to swap barrels.

### OPERATING INSTRUCTIONS

To begin styling, ensure the desired barrel is securely attached. Plug in the device and press the power button to turn it on. Select one of the five heat settings appropriate for your hair type and texture. The T3 Digital SinglePass technology, powered by a smart microchip, ensures even and consistent heat distribution for efficient, one-pass styling. The CeraGloss™ ceramic barrel contributes to shiny, long-lasting results.

5 heat settings  
for every hair type & texture.



Image: A detailed view of the curling iron's handle, highlighting the power button and the five distinct heat settings.

Wrap and release hair around wand for  
easy styling.



Image: A user demonstrating the technique of wrapping a section of hair around the curling wand for styling.

### **Styling Tips:**

- For beachy waves, wrap sections of hair around the barrel, leaving the ends out.
- For uniform spiral waves, wrap hair tightly from root to tip.
- For soft, loose waves, use a larger barrel and wrap hair loosely.
- Always ensure hair is dry before styling.



Before



**Undone Waves**

1" Wand Barrel



**Tousled Waves**

1 1/4" - 3/4" Tapered Wand Barrel



**Loose Waves**

1 1/2" Wand Barrel



Image: Examples of undone, tousled, and loose waves on dark hair, achieved with different T3 barrels.

Before



Undone Waves

1" Wand Barrel



Tousled Waves

1 1/4" - 3/4" Tapered Wand Barrel



Loose Waves

1 1/2" Wand Barrel



Image: Examples of undone, tousled, and loose waves on blonde hair, achieved with different T3 barrels.

Your browser does not support the video tag.

Video: A comprehensive guide to using the T3 Whirl Trio Interchangeable Styling Wand, demonstrating various styling techniques.

## MAINTENANCE

To ensure the longevity and optimal performance of your T3 curling iron, regular maintenance is recommended. Always unplug the device and allow it to cool completely before cleaning. Wipe down the barrels and handle with a soft, damp cloth. Avoid using harsh chemicals or abrasive cleaners, as these can damage the ceramic coating. Store the curling iron and its barrels in a dry, safe place.

For added safety, the device features a 1-hour auto shut-off function, providing peace of mind if accidentally left on.

## TROUBLESHOOTING

If you encounter any issues with your T3 curling iron, please refer to the following common troubleshooting



tips:

- **Device not heating up:** Ensure the curling iron is properly plugged into a functioning power outlet and the power button is pressed. Check if the barrel is securely attached and locked into place.
- **Curls not holding:** Ensure your hair is completely dry before styling. Experiment with different heat settings to find the optimal temperature for your hair type. Use smaller sections of hair and allow curls to cool completely before brushing or touching.
- **Hair snagging:** Ensure the barrel is clean and free of product buildup. Make sure hair sections are smooth and detangled before wrapping.

For more detailed troubleshooting steps or persistent issues, please consult the full user guide or contact customer support.

### SPECIFICATIONS

Feature	Detail
Brand	T3
Model Number	76583
Product Dimensions	12 x 1.5 x 19 inches
Item Weight	1.13 Pounds
Material	Ceramic
Hair Type	All
Auto Shut-off	1 Hour
Technology	Digital SinglePass, CeraGloss™

### WARRANTY AND SUPPORT

For comprehensive product information, detailed instructions, and troubleshooting guides, please refer to the official user guide:

[Download User Guide \(PDF\)](#)

For warranty information or to contact customer support, please visit the official T3 Micro website or refer to the contact details provided in your product packaging.