



[Manuals.plus](#) /

› [Bridgeport](#) /

› Bridgeport Micrometer Scale User Manual

Bridgeport 1195306 M1165

Bridgeport Micrometer Scale User Manual

Model: 1195306 M1165

1. PRODUCT OVERVIEW

This manual provides instructions for the installation and maintenance of the Bridgeport Micrometer Scale, part number 1195306 M1165. This component is an OEM replacement part designed for American-made Bridgeport milling machines. It is located on the front of the milling machine head and is crucial for precise measurements during operation. The package includes one micrometer scale and two mounting screws. The screw holes on the scale are precisely spaced at $3 \frac{5}{16}$ inches center-to-center.

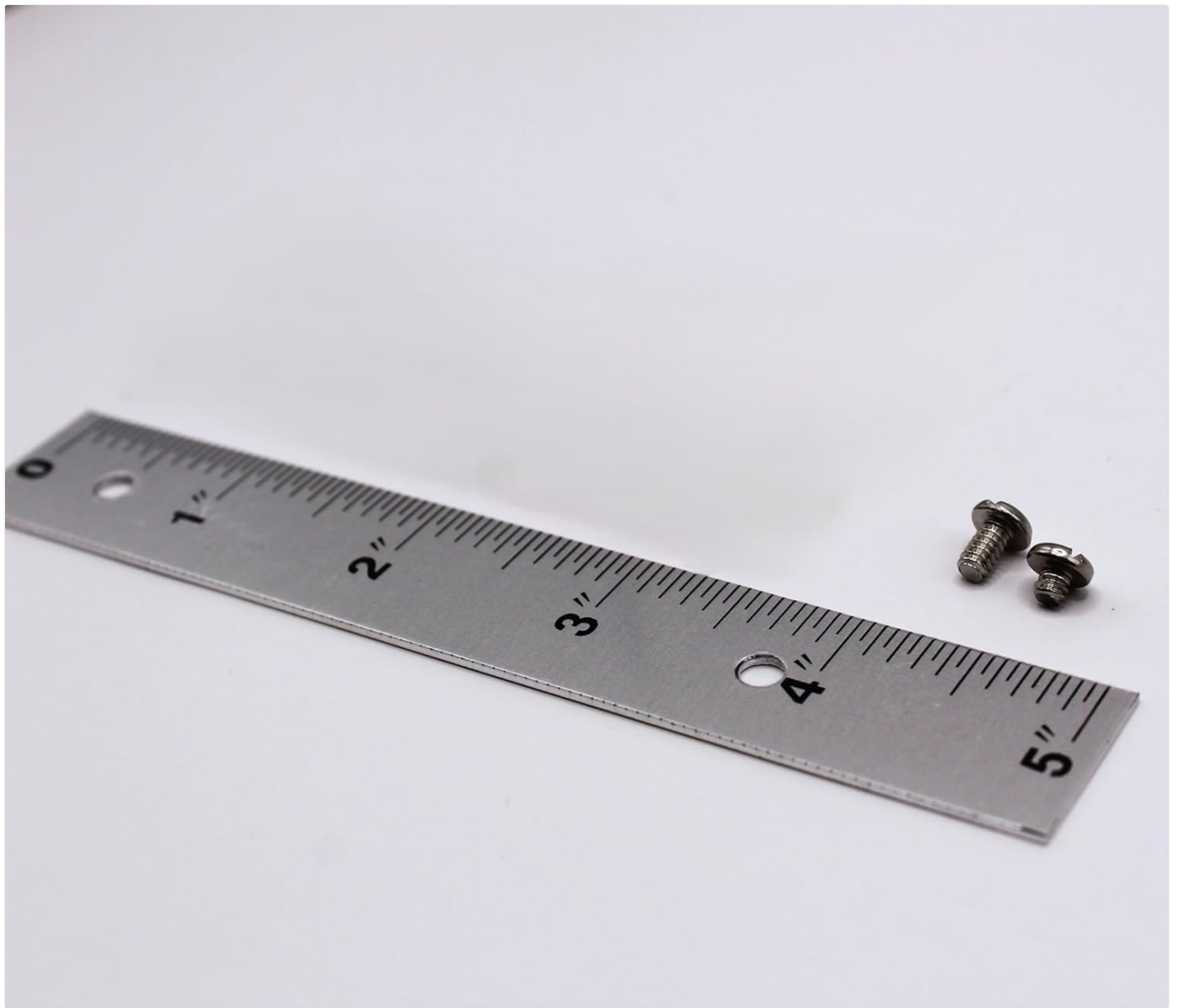


Figure 1: Bridgeport Micrometer Scale (OEM 1195306) shown with its two accompanying mounting screws. This scale is designed for precise measurement readings on a milling machine.



Figure 2: A close-up view of the two mounting screws provided with the micrometer scale, positioned next to a ruler to illustrate their approximate size and thread type.

2. SETUP AND INSTALLATION

Before beginning installation, ensure the milling machine is powered off and secured to prevent accidental movement. Gather necessary tools, which typically include a screwdriver appropriate for the provided screws.

2.1. Locating the Installation Area

The micrometer scale is designed to be installed on the front of the milling machine head. Identify the existing mounting holes or the designated area for the scale. These holes are spaced $3 \frac{5}{16}$ inches center-to-center.

2.2. Installation Steps

1. Carefully align the new micrometer scale with the two screw holes on the front of the milling machine head.
2. Insert the provided screws into the corresponding holes on the scale and into the machine head.
3. Using a suitable screwdriver, gently tighten the screws. Do not overtighten, as this may damage the scale or the machine head. Tighten until snug and secure.
4. Verify that the scale is firmly attached and does not wobble.

3. OPERATING INSTRUCTIONS

The micrometer scale provides visual reference for precise adjustments on the milling machine. Its primary function is to assist in reading the position of the machine's components, typically the quill or knee, depending on its specific placement on your model.

3.1. Reading the Scale

- Observe the markings on the scale in conjunction with the corresponding indicator on the milling machine.
- Each major division typically represents a specific unit of measurement (e.g., inches or millimeters), with smaller subdivisions for finer readings.
- Ensure proper lighting to clearly read the markings and avoid parallax errors.

3.2. Integration with Machine Operation

The micrometer scale works in conjunction with the machine's handwheels and dials to achieve desired depths or positions. Refer to your milling machine's primary operation manual for detailed instructions on how to use the scale for specific machining operations.

4. MAINTENANCE

Proper maintenance ensures the longevity and accuracy of your micrometer scale.

4.1. Cleaning

- Regularly wipe the scale surface with a clean, soft cloth to remove dust, oil, and debris.
- For stubborn grime, use a mild, non-abrasive cleaning solution. Avoid harsh chemicals that could damage the markings or material.
- Ensure the scale is dry after cleaning to prevent corrosion.

4.2. Inspection

- Periodically inspect the scale for any signs of wear, damage, or fading of markings.
- Check the tightness of the mounting screws. Retighten if necessary, but do not overtighten.
- If the scale is significantly damaged or unreadable, replacement is recommended to maintain machining accuracy.

5. TROUBLESHOOTING

This section addresses common issues related to the micrometer scale.

Problem	Possible Cause	Solution
Scale is loose or wobbly.	Mounting screws are loose.	Tighten the mounting screws.
Markings are difficult to read.	Dirt, oil, or poor lighting. Faded markings.	Clean the scale surface. Improve lighting. If markings are faded, consider replacement.
Scale does not fit.	Incorrect model or non-Bridgeport machine.	Verify the part number (1195306 M1165) and ensure it is an American-made Bridgeport milling machine. Consult the supplier for compatibility.

6. SPECIFICATIONS

Feature	Detail
Part Number	OEM 1195306 (M1165)
Compatibility	American-Made Bridgeport Milling Machines
Location	Front of the Milling Machine Head
Screw Hole Spacing	3 5/16 inches (Center-to-Center)
Included Components	1 Micrometer Scale, 2 Mounting Screws

7. WARRANTY AND SUPPORT

This product is an OEM replacement part. For specific warranty information, please refer to the terms provided by your original point of purchase or the manufacturer of the Bridgeport milling machine. General return policies may apply as per the seller's terms.

For technical support or inquiries regarding this micrometer scale, please contact the supplier or a certified Bridgeport service technician. Ensure you have the part number (1195306 M1165) available when seeking assistance.

