

VIVOSUN 304113-S

VIVOSUN Hydroponic Grow Tent Instruction Manual

Model: 304113-S (96" x 48" x 80" / 243.84 x 121.92 x 203.2 cm)

Brand: VIVOSUN

1. INTRODUCTION

Thank you for choosing the VIVOSUN Hydroponic Grow Tent. This manual provides essential information for the safe and efficient assembly, operation, and maintenance of your grow tent. Designed for optimal indoor plant cultivation, this tent features a highly reflective Mylar interior, durable fabric, and a robust metal frame to create an ideal growing environment.

2. SAFETY INSTRUCTIONS

- Always ensure the grow tent is assembled on a flat, stable surface.
- Keep all electrical components and wiring away from water sources.
- Do not overload the hanging bars. The maximum weight capacity is 160 lbs (72.6 kg).
- Ensure proper ventilation to prevent heat buildup and maintain air quality.
- Keep children and pets away from the grow tent, especially during operation.
- Inspect the tent regularly for any damage or wear.

3. PACKAGE CONTENTS

Please verify that all components are present before beginning assembly:

- Grow Tent Fabric (Multi-layered Oxford cloth with Mylar lining)
- Metal Poles (for frame construction)
- Corner Connectors (tool-free assembly)
- Hanging Bars (for lights, fans, etc.)
- Removable Floor Tray
- Hanging Straps (2 included)

4. SETUP AND ASSEMBLY

Assembly is designed to be quick and straightforward. It is recommended to have assistance for larger tent sizes.

1. **Unpack Components:** Carefully remove all parts from the packaging and lay them out. Verify against the package contents list.
2. **Assemble Base Frame:** Connect the shortest metal poles to the corner connectors to form the base rectangle. Ensure all connections are secure.
3. **Install Vertical Poles:** Insert the vertical metal poles into the corner connectors of the base frame.
4. **Assemble Top Frame:** Connect the remaining metal poles to the top corner connectors to form the top rectangle. Carefully lift and attach this top frame to the vertical poles.
5. **Drape Tent Fabric:** Carefully drape the grow tent fabric over the assembled metal frame. Ensure the zippers are aligned correctly with the frame openings. It may require gentle stretching to fit over the frame.
6. **Secure Fabric:** Zip up all zippers to fully enclose the frame. The upgraded SBS zippers are designed for smooth operation and a light-tight seal.
7. **Insert Floor Tray:** Place the removable Mylar floor tray inside the tent at the bottom.
8. **Install Hanging Bars:** Attach the hanging bars to the designated points on the top frame. These bars can support up to 160 lbs (72.6 kg) for lights, fans, and other equipment. Use the included hanging straps as needed.

Durable Metal Frame

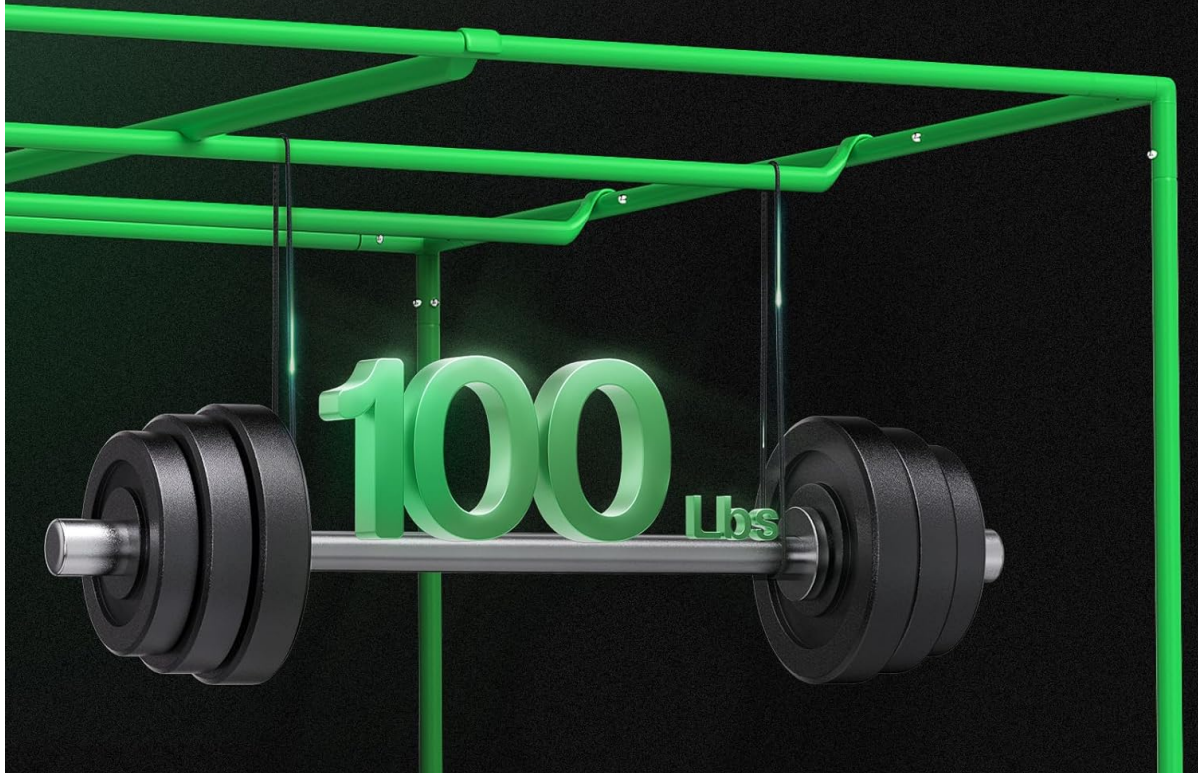
Provide a secure and stable environment for optimal plant growth.

0.8mm
Thickness

16mm
Pipe Diameter



Stable Hanging Bars



The grow tent is supported by a durable metal frame, featuring 0.8mm thick pipes with a 16mm diameter. This robust construction provides a secure and stable environment, with hanging bars capable of supporting up to 160 lbs (72.6 kg) of equipment.

Multi-Layered Fabric

Blocks all light leaks and boosts the output efficiency of your setup.

600D

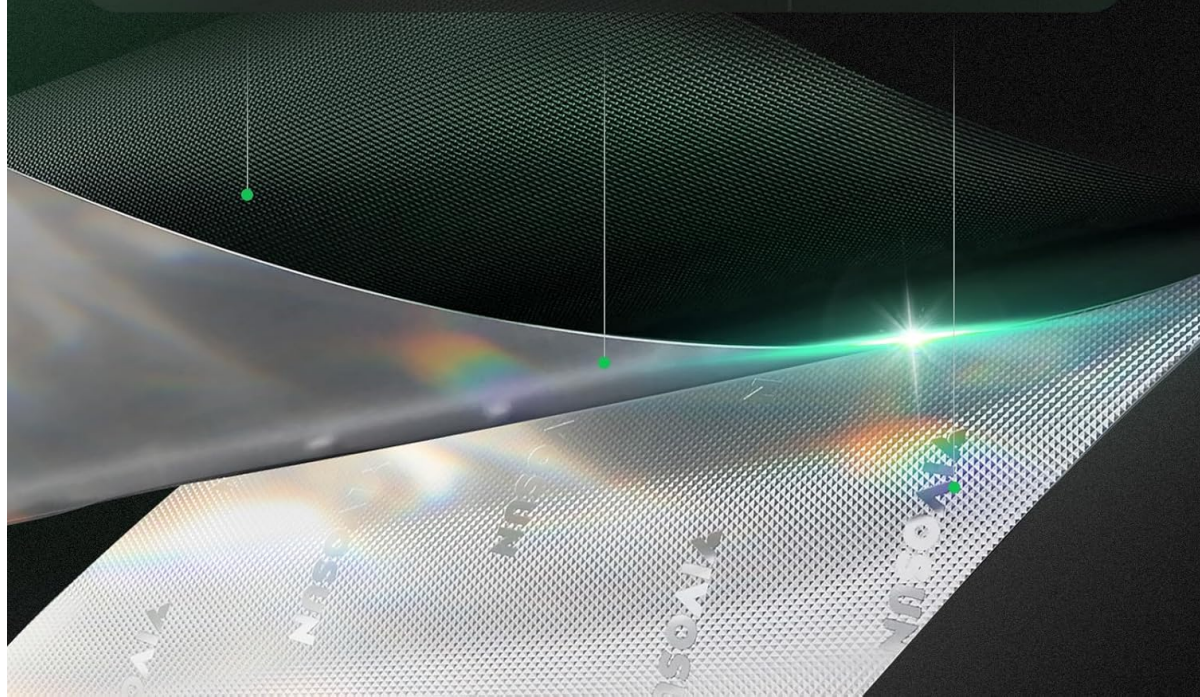
Oxford Nylon

340G

Lightproof PE

100%

Reflective Mylar



The VIVOSUN grow tent features upgraded heavy-duty SBS zippers, designed for a strong grip and seamless, effortless operation. These zippers ensure a light-tight seal, preventing any light from escaping or entering the tent.

5. OPERATING INSTRUCTIONS

The VIVOSUN grow tent is designed to create an optimized environment for your plants.

- **Light Management:** The interior is lined with 100% reflective diamond Mylar to maximize light utilization and ensure even light distribution. Ensure all zippers are fully closed to prevent light leaks.
- **Ventilation:** Utilize the various ventilation openings and ducts to install fans and filters. Proper airflow is crucial for temperature regulation and air exchange. The lower window can assist with heat dissipation.
- **Monitoring:** The transparent viewing window allows you to check on your plants' growth without disturbing the internal environment.
- **Cable Management:** Use the designated slots for routing electrical cords for lights, fans, and other equipment, ensuring a tidy and safe setup.



The interior of the VIVOSUN grow tent features 100% reflective diamond Mylar, designed to maximize light utilization and ensure even light distribution for optimal plant growth. This reflective surface contributes to high energy efficiency and increased yield.

100% Reflective Diamond Mylar

 **Better**
Light Utilization

 **Even**
Light Distribution

 **High**
Energy Efficiency

 **Increased**
Yield & Quality

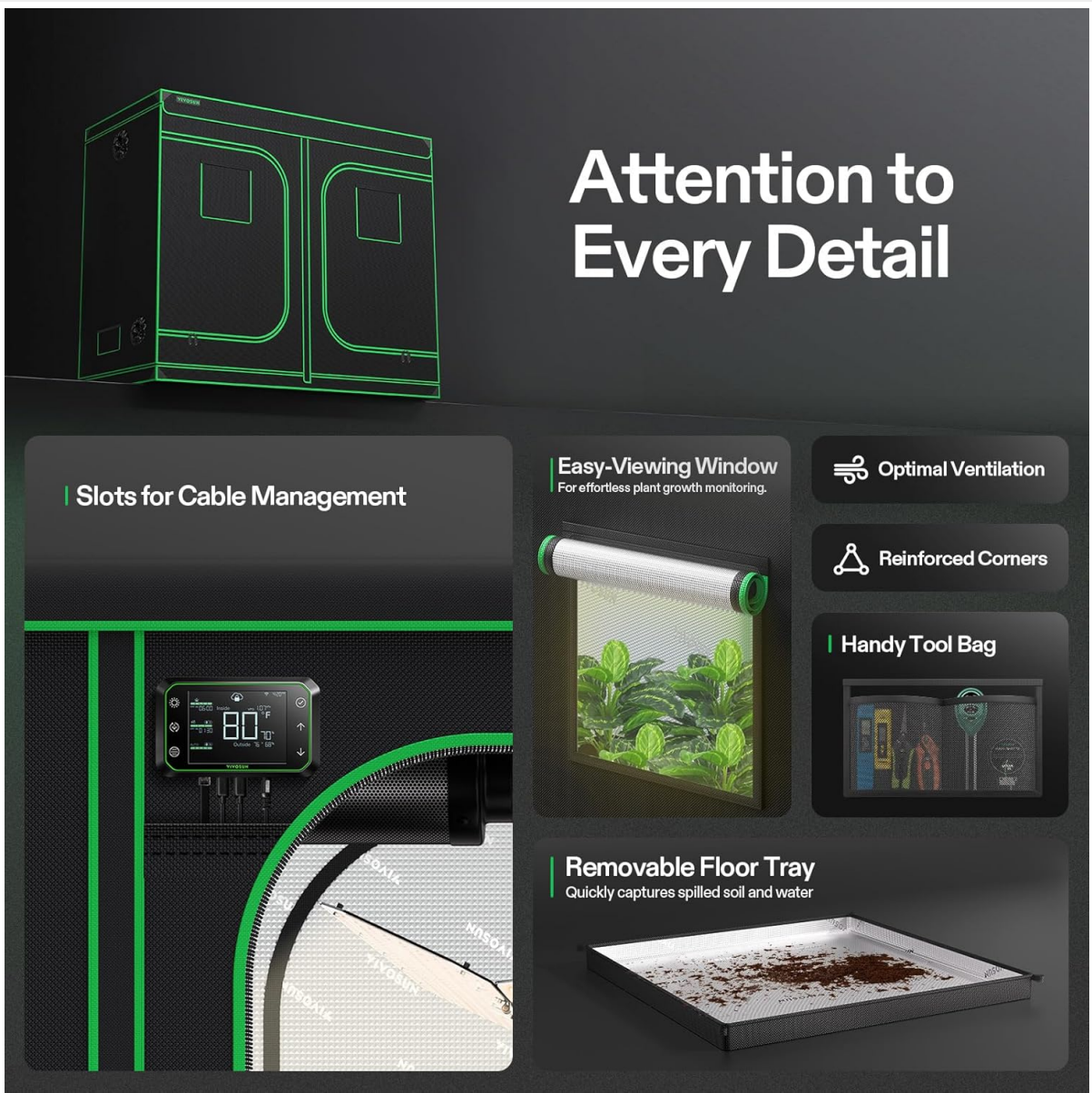
VIVOSUN

Thickness	Reflectivity
> 17 μ m	100%

Other	
< 10 μ m	70%-80%



The grow tent is constructed with a multi-layered fabric, including 600D Oxford Nylon, 340G Lightproof PE, and 100% Reflective Mylar. This design effectively blocks all light leaks and enhances the overall efficiency of your indoor growing setup.



The VIVOSUN grow tent incorporates thoughtful design details for user convenience and plant health. These include slots for cable management, an easy-viewing window for monitoring, optimal ventilation options, reinforced corners for stability, a handy tool bag for accessories, and a removable floor tray for easy cleaning.

6. MAINTENANCE

- **Cleaning the Floor Tray:** The removable floor tray is designed to catch spilled soil and water. Regularly remove and clean the tray to maintain hygiene and prevent mold growth.
- **Tent Fabric Cleaning:** Wipe down the interior Mylar and exterior Oxford fabric with a damp cloth as needed. Avoid harsh chemicals that could damage the material.
- **Zipper Care:** Keep zippers clean and free of debris to ensure smooth operation. If zippers become stiff, a small amount of zipper lubricant can be applied.
- **Frame Inspection:** Periodically check the metal frame and connectors for any signs of loosening or damage. Tighten connections if necessary.

7. TROUBLESHOOTING

- **Light Leaks:** Ensure all zippers are fully closed and the fabric is properly stretched over the frame. Check for any small gaps around duct ports and viewing windows.

- **Tent Instability:** Verify that all metal poles are fully inserted into the corner connectors. Ensure the tent is on a level surface.
- **Poor Ventilation:** Check that intake and exhaust fans are operating correctly and that all ventilation ports are clear of obstructions. Ensure appropriate fan sizing for your tent volume.
- **Difficulty Zipping:** Ensure the fabric is not caught in the zipper teeth. Apply gentle, even pressure when zipping. Clean any debris from the zipper track.

8. SPECIFICATIONS

Feature	Detail
Model Number	304113-S
Dimensions (L x W x H)	96" x 48" x 80" (243.84 x 121.92 x 203.2 cm)
Weight	22.48 kg (49.56 lbs)
Frame Material	Metal (16mm diameter, 0.8mm thickness)
Interior Material	PE, 100% Reflective Mylar
Exterior Material	600D Oxford Fabric
Hanging Bar Weight Limit	160 lbs (72.6 kg)
Plant Capacity (approx.)	8-16 plants (in 3-gallon pots)
UPC	714119464126

Specifications

Model: S848

96" x 48" x 80"

Size

32 ft²

Coverage

213 ft³

Volume

130 lbs.

Weight Capacity

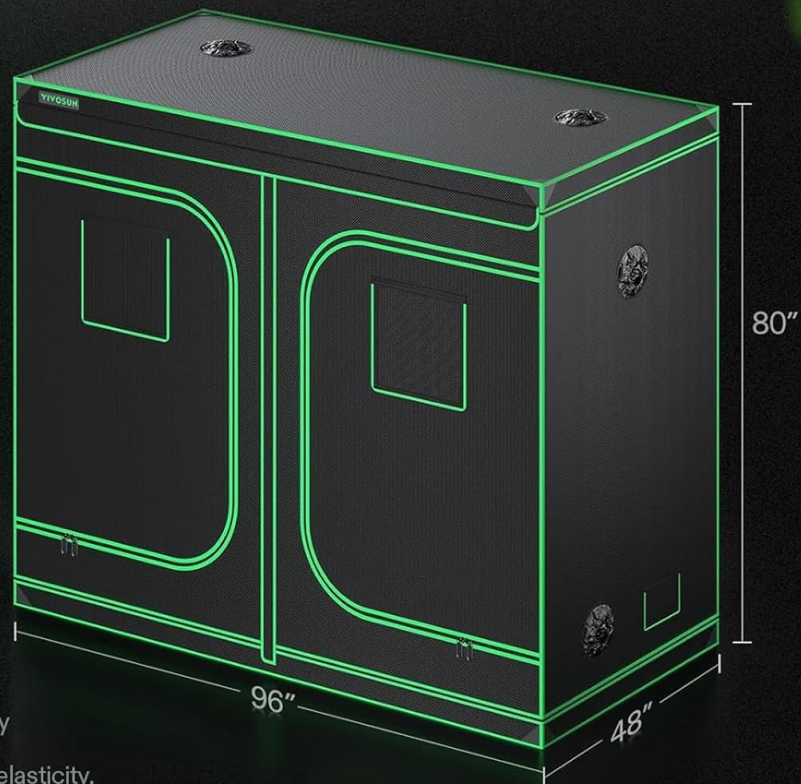
16mm Steel

Frame

**8-16 plants in
3 gallon pots**

Plant Capacity

Note: Actual size may vary slightly 2% due to manual measurement and fabric elasticity.



This diagram details the VIVOSUN grow tent's dimensions: 96 inches (length) x 48 inches (width) x 80 inches (height). It also indicates a plant capacity of 8-16 plants when using 3-gallon pots, providing ample space for indoor cultivation.

9. WARRANTY AND SUPPORT

VIVOSUN products are manufactured to high-quality standards. For specific warranty information, please refer to the warranty card included with your purchase or visit the official VIVOSUN website. If you encounter any issues or require technical assistance, please contact VIVOSUN customer support through their official channels.

For further assistance, please visit: www.vivosun.com