

## Home Decorators Collection 89763

# Home Decorators Collection 52-inch Indoor Bronze Organza Shade Ceiling Fan Instruction Manual

Model: 89763 | Brand: Home Decorators Collection

## INTRODUCTION

This instruction manual provides detailed guidance for the safe installation, operation, and maintenance of your Home Decorators Collection 52-inch Indoor Bronze Organza Shade Ceiling Fan. Please read all instructions carefully before beginning installation and retain this manual for future reference. This ceiling fan features a hand-applied bronze finish, reversible cherry and walnut blades, and a reversible motor for year-round air movement.



Image: The 52-inch ceiling fan in bronze finish with an organza shade and a remote control unit.

## IMPORTANT SAFETY INFORMATION

---

To reduce the risk of fire, electric shock, or personal injury, always follow these basic precautions:

- Read all instructions before installing the fan.
- Ensure the installation site is suitable for the fan's weight and size.
- All wiring must be in accordance with national and local electrical codes.
- Disconnect power at the main circuit breaker before installation or servicing.
- Do not operate the fan with a damaged power cord or plug.
- Avoid placing objects in the path of the fan blades.
- Do not use the fan outdoors or in wet locations.

## PACKAGE CONTENTS

---

Verify that all components listed below are included in your package:

- Ceiling Fan Motor Assembly
- Fan Blades (5)
- Blade Brackets
- Light Kit with Organza Shade
- Remote Control with Wall Mount

- Downrod and Canopy Assembly
- Hardware Pack (screws, washers, wire nuts)



Image: A close-up view of the fan blade attachment point, showing the bronze finish and mounting hardware.

## INSTALLATION GUIDE

---

This section outlines the general steps for installing your ceiling fan. For detailed diagrams and specific instructions, refer to the separate installation sheet included with your product.

1. **Prepare the Installation Site:** Ensure the electrical box is securely mounted and capable of supporting the fan's weight. Turn off power at the circuit breaker.
2. **Assemble the Downrod:** Attach the downrod to the motor housing, feeding the electrical wires through.
3. **Mount the Hanging Bracket:** Secure the hanging bracket to the electrical box.
4. **Hang the Fan:** Carefully lift the fan assembly and hang it from the hanging bracket.
5. **Make Electrical Connections:** Connect the fan's wiring to the household wiring according to the provided wiring diagram. Ensure all connections are secure.
6. **Attach the Canopy:** Slide the canopy up to the ceiling and secure it to the hanging bracket.
7. **Install Fan Blades:** Attach the blade brackets to the fan blades, then secure the blade assemblies to the

motor housing.

8. **Install the Light Kit:** Connect the light kit wiring and attach the light kit to the fan motor housing. Install the organza shade.
9. **Restore Power:** Turn on power at the circuit breaker and test the fan's operation.

## OPERATING INSTRUCTIONS

---

Your ceiling fan is operated using the included remote control.

### Remote Control Operation

- **Fan ON/OFF:** Press the power button to turn the fan on or off.
- **Fan Speed:** Use the speed buttons (1, 2, 3) to adjust the fan speed. (3 being the highest, 1 being the lowest).
- **Light ON/OFF/Dimming:** Press the light button to turn the light on or off. Hold the light button to dim or brighten the light.



Image: The ceiling fan and its accompanying remote control, illustrating the primary control interface.

### Reversible Motor Function

This fan features a reversible motor, allowing you to change the direction of the blades for seasonal comfort. A switch on the fan's motor housing controls the direction.

- **Summer Mode (Downward Airflow):** Set the switch to allow blades to rotate counter-clockwise, creating a downward breeze for cooling.
- **Winter Mode (Upward Airflow):** Set the switch to allow blades to rotate clockwise, drawing warm air up

and distributing it around the room.

Always turn off the fan and wait for the blades to stop completely before changing the direction switch.



Image: A view of the fan blades, highlighting their reversible design with distinct cherry and walnut finishes on opposite sides.

## MAINTENANCE AND CARE

Regular maintenance ensures the longevity and optimal performance of your ceiling fan.

- **Cleaning:** Use a soft, damp cloth to clean the fan's surfaces. Do not use abrasive cleaners or solvents, as these can damage the finish.
- **Blade Cleaning:** Dust the fan blades regularly to prevent buildup, which can affect balance and performance.
- **Tighten Fasteners:** Periodically check and tighten all screws and fasteners on the fan blades and mounting hardware.
- **Light Bulb Replacement:** Ensure power is off before replacing light bulbs. Use bulbs of the correct wattage and type as specified in the product documentation.

## TROUBLESHOOTING

Refer to this section for common issues and their potential solutions.

Problem	Possible Cause	Solution
Fan does not start	No power to the fan; Loose wire connections; Remote control battery dead.	Check circuit breaker; Verify all wire connections; Replace remote control battery.
Fan wobbles	Loose blade screws; Unbalanced blades; Loose mounting bracket.	Tighten all blade screws; Use a balancing kit (not included); Ensure mounting bracket is secure.

Problem	Possible Cause	Solution
---------	----------------	----------

Light does not work	Light bulb burned out; Loose wire connection in light kit.	Replace light bulb; Check light kit wiring connections.
Noisy operation	Loose screws; Motor housing rubbing; Incorrect blade installation.	Check and tighten all screws; Ensure no parts are rubbing; Reinstall blades correctly.

## PRODUCT SPECIFICATIONS

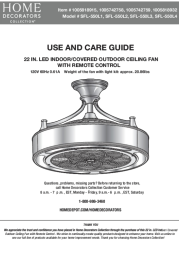

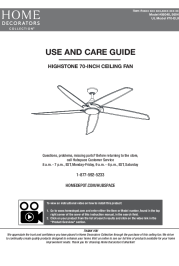
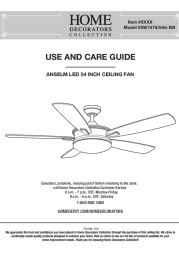
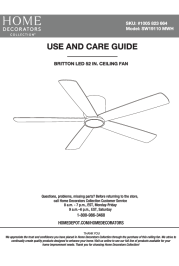
Specification	Detail
Brand	Home Decorators Collection
Model Name	89763
Electric Fan Design	Ceiling Fan
Size	52 inches
Color	Brown (Bronze finish)
Finish Type	Bronze
Room Type	Bedroom, Living Room
Indoor/Outdoor Usage	Indoor
Special Feature	Remote Control
Control Method	Remote
Power Source	AC
Voltage	120 Volts (AC)
Wattage	75 watts
Number of Power Levels	3
Item Weight	24 Pounds
Product Dimensions	52 x 52 x 15.4 inches
Included Components	Remote
UPC	887912897634

## WARRANTY AND CUSTOMER SUPPORT

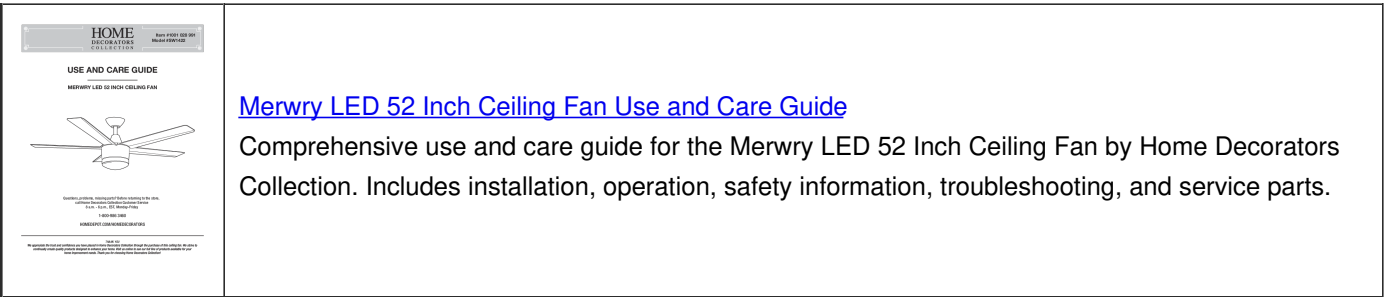
For warranty information, please refer to the warranty card included with your product. This document outlines the terms and conditions of your product's warranty coverage.

Should you require technical assistance, replacement parts, or have questions regarding your Home Decorators Collection ceiling fan, please contact the manufacturer's customer support. Contact details are typically provided in the product packaging or on the manufacturer's official website.

## Related Documents - 89763

 <p>HOME DECORATORS COLLECTION 22-INCH LED INDOOR/COVERED OUTDOOR CEILING FAN WITH REMOTE CONTROL SFL-550L1, SFL-550L2, SFL-550L3, SFL-550L4</p> <p>USE AND CARE GUIDE</p> <p>INSTALLATION, OPERATION, CARE, AND TROUBLESHOOTING</p>	<p><a href="#">Home Decorators Collection 22-Inch LED Ceiling Fan with Remote Control - Use and Care Guide</a></p> <p>This guide provides detailed instructions for the installation, operation, and maintenance of the Home Decorators Collection 22-inch LED Indoor/Covered Outdoor Ceiling Fan with Remote Control (Models SFL-550L1, SFL-550L2, SFL-550L3, SFL-550L4). It includes important safety warnings, warranty information, a list of required tools and included hardware, and step-by-step installation procedures.</p>
 <p>HOME DECORATORS COLLECTION LIGHTING FIXTURE WARRANTY INFORMATION</p> <p>5-YEAR LIMITED WARRANTY</p>	<p><a href="#">Home Decorators Collection Lighting Fixture Warranty Information</a></p> <p>This document outlines the 5-year limited warranty for Home Decorators Collection lighting fixtures, covering defects in materials and workmanship under normal use. It details exclusions such as damage from misuse, improper installation, and normal wear and tear. Contact information for customer service is provided.</p>
 <p>HOME DECORATORS COLLECTION HIGHSTONE 70-INCH SMART CEILING FAN</p> <p>USE AND CARE GUIDE</p> <p>56040, 56041, 70-ELIR</p>	<p><a href="#">Highstone 70-Inch Smart Ceiling Fan Use and Care Guide</a></p> <p>Comprehensive guide for the Home Decorators Collection Highstone 70-inch smart ceiling fan, covering installation, operation, care, and troubleshooting. Includes model numbers 56040, 56041, and 70-ELIR.</p>
 <p>HOME DECORATORS COLLECTION ANSELM LED 54-INCH CEILING FAN</p> <p>USE AND CARE GUIDE</p> <p>54-LED, 54-LED-2, 54-LED-3</p>	<p><a href="#">Anselm LED 54-Inch Ceiling Fan Use and Care Guide</a></p> <p>Comprehensive guide for the Anselm LED 54-Inch Ceiling Fan, covering installation, operation, care, and troubleshooting. Includes safety information and parts list.</p>
 <p>HOME DECORATORS COLLECTION BRITTON LED 52-INCH CEILING FAN</p> <p>USE AND CARE GUIDE</p> <p>52-LED, 52-LED-2, 52-LED-3</p>	<p><a href="#">Home Decorators Collection Britton LED Ceiling Fan Use and Care Guide</a></p> <p>Comprehensive guide for the Home Decorators Collection Britton LED 52-inch Ceiling Fan. Learn about installation, operation, care, and troubleshooting for your fan.</p>

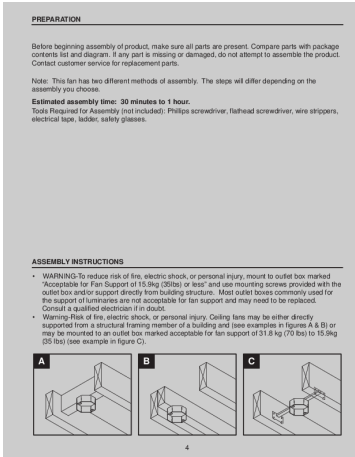




[Merwry LED 52 Inch Ceiling Fan Use and Care Guide](#)

Comprehensive use and care guide for the Merwry LED 52 Inch Ceiling Fan by Home Decorators Collection. Includes installation, operation, safety information, troubleshooting, and service parts.

Documents - Home Decorators Collection – 89763



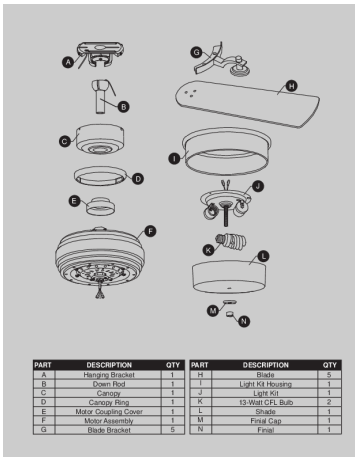
[\[pdf\]](#) Installation Guide Instructions Guide Diagram Catalog

89763 1001194092 IM English ai Ben Bergquist 52 in Indoor Bronze Organza Shade Ceiling Fan with Light Kit and Remote Control Installation Guide Home Decorators Collection 887912897634

0887912897634 1e7b39d2 41ac 4f1f a169 07ed26ecbd2c images thdstatic catalog Images 1e |||

PREPARATION Before beginning assembly of product, make sure all parts are present. Compare parts with package contents list and diagram. If any part is missing or damaged, do not attempt to assemble the product. Contact customer service for replacement parts. Note: This fan has two different methods...

lang:en score:23 filesize: 280.3 K page\_count: 11 document date: 2015-01-05



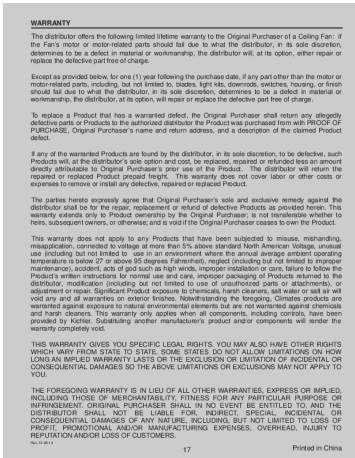
[\[pdf\]](#) Instructions Catalog

89763 1001194092 IM English ai Ben Bergquist 52 in Indoor Bronze Organza Shade Ceiling Fan with Light Kit and Remote Control Instructions Assembly Home Decorators Collection 887912897634

0887912897634 3600df9b 91a8 4b1b ba9b 9cb326cc02b8 images thdstatic catalog Images 36 |||

A C E G B I D F K H J L M N PART A B C D E F G DESCRIPTION Hanging Bracket Down Rod Canopy Canopy Ring Motor Coupling Cover Motor Assembly Blade Bracket QTY PART 1 H 1 I 1 J 1 K 1 L 1 M 5 N DESCRIPTION Blade Light Kit 13-Watt CFL Bulb Shade Finial Cap Finial Q...

lang:en score:22 filesize: 37.15 K page\_count: 1 document date: 2015-01-05



[\[pdf\]](#) Warranty Catalog

89763 1001194092 IM English ai Ben Bergquist 52 in Indoor Bronze Organza Shade Ceiling Fan with Light Kit and Remote Control Warranty Home Decorators Collection 887912897634 0887912897634

c5c84b8b 3caa 41a5 bb6b 2eb4f3059df4 images thdstatic catalog Images c5 |||

WARRANTY The distributor offers the following limited lifetime warranty to the Original Purchaser of a Ceiling Fan: if the Fan s motor or motor-related parts should fail due to what the distributor, in its sole discretion, determines to be a defect in material or workmanship, the distributor will, a...

lang:en score:13 filesize: 12.37 K page\_count: 1 document date: 2015-01-05



[pdf] Installation Guide Specifications Catalog

89763 1001194092 IM English ai Ben Bergquist 52 in Indoor Bronze Organza Shade Ceiling Fan with Light Kit and Remote Control Specification Home Decorators Collection 887912897634 0887912897634 acf943a1 864b 4b83 95cc 850a3e13e539 images thdstatic catalog Images ac |||

Important: When using an existing outlet box, be sure the box is securely attached to the building structure and can support the full weight of the fan. Failure to do so can result in serious injury or death. Turn off circuit breakers and wall switch to the fan supply wire leads. Warning: Failure to

lang:en score:13 filesize: 51.24 K page\_count: 2 document date: 2015-01-05

