

Sato FI212T

Sato Barlabé Fi212T Barcode Label Printer User Manual

1. INTRODUCTION

This user manual provides essential information for the safe and efficient operation of your Sato Barlabé Fi212T Barcode Label Printer. Please read this manual thoroughly before using the product and keep it for future reference. The Barlabé Fi212T is a compact and lightweight 2-inch barcode label printer designed for various labeling needs, offering both PC-connected and standalone operation.

2. SAFETY INFORMATION

Always observe the following safety precautions to prevent injury or damage to the printer:

- Do not expose the printer to water or excessive moisture.
- Use only the specified power adapter.
- Do not attempt to disassemble or repair the printer yourself. Contact qualified service personnel.
- Keep hands clear of moving parts during operation, especially when loading labels.
- Ensure proper ventilation around the printer.

3. PACKAGE CONTENTS

Verify that all items are present in the package:

- Sato Barlabé Fi212T Printer Unit
- AC Adapter
- USB Cable
- SD Card (pre-installed or included separately)
- FI Tool Software (on SD card or available for download)
- Quick Start Guide

4. SETUP

4.1 Unpacking

Carefully remove the printer and all accessories from the packaging. Retain the packaging for future transport or storage.

4.2 Power Connection

Connect the AC adapter to the printer's power input and then plug it into a suitable power outlet. If using the optional battery, ensure it is charged or charging.

4.3 Label Roll Installation (Drop-in Method)

The Barlabe Fi212T uses a convenient drop-in method for label roll installation:

1. Open the front cover of the printer. The cover opens wide for easy access.
2. Place the label roll into the designated compartment. Ensure the labels feed from the bottom of the roll.
3. Pull the leading edge of the label roll past the print head and out through the label exit slot.
4. Close the front cover securely.

優れた操作性

- グラフィック印字や多彩な文字表現が12dot/mm(305dpi)だから可能。
- 最大100mm/秒の高速印字。
- 63mmのラベル通紙幅(印字幅56mm)。
- 見やすい大型ディスプレイ(4行表示)と、大き目のテンキーで入力作業も確実。
- ドロップイン方式のラベルセットで簡単ラベル発行。
- 呼出し検索やバーコード検索機能で、早く・正確なラベル発行をサポート。



ドロップイン方式

連続発行

剥離発行

呼出し名検索

検索結果

Image: The printer's front cover is open, illustrating the simple drop-in method for loading a label roll. This design facilitates quick and easy label replacement.

4.4 SD Card Insertion

Insert the provided SD card into the SD card slot on the printer. This card is used for data transfer and storage of label formats.

小型・軽量

本体幅132mm×奥行194mm×高さ147mm、重さ1.7Kg(ACアダプタ除く)のコンパクトボディ。
バッテリー(オプション)内蔵の為いつでも手軽に持ち運べます。
また、バッテリーは本体充電が可能です。



バッテリー
(オプション)



小形充電式電池リサイクル
一般社団法人 JBRC

弊社は一般社団法人JBRCに加盟し、リサイクルを実施しています。
使用済みの小形充電式電池のリサイクルに御協力下さい。
[<http://www.jbrc.com>]



データメンテナンス データの一元管理を実現!

FIツール or FIツールPROで作成したデータをFI212Tにダウンロードします。

① SDカードによるデータ転送

登録したデータをSDカードに
出力し、SDカードをプリンタに
差し込みます。



SDカード



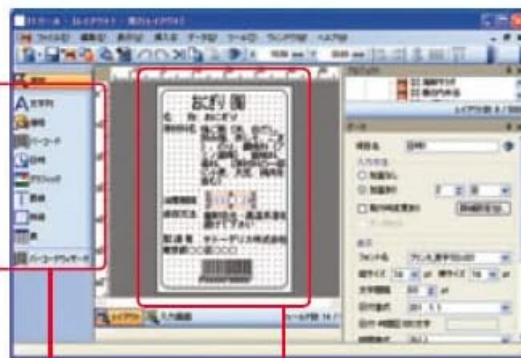
Image: This diagram illustrates the process of transferring data to the Barlabé Fi212T using an SD card. Data created on a PC can be output to the SD card, which is then inserted into the printer for use.

4.5 Software Installation (FI Tool)

The FI Tool software (standard included) allows for comprehensive label layout creation and data management on a PC. Install the software from the provided SD card or download it from the official Sato website.

ソフト機能

PC上で、FIツール(標準添付)やFIツールPRO(別売)を使用することで、簡単に作りたいレイアウトが作成できます。
外部データファイルのインポート、エクスポートも容易に行えます。



機能をボタンで選択。機能をイメージで表現してわかりやすくしています。

ラベルイメージを画面上で確認しながらレイアウト作成。枠の作成も簡単です。

業種・サイズごとに標準テンプレートを搭載しており、容易にレイアウトが登録できます。

Image: A screenshot of the FI Tool software interface. This software allows users to easily create custom label layouts, import/export data, and utilize standard templates for various industries and label sizes.

5. OPERATING INSTRUCTIONS

5.1 Powering On/Off

Press and hold the power button to turn the printer on or off. The large backlit display will illuminate upon startup.

5.2 Label Creation and Data Management with FI Tool

Use the FI Tool software on your PC to design custom label layouts and manage data. The software supports free layout creation and includes standard templates. Data can be transferred to the printer via the SD card.

5.3 Standalone Label Printing

The Barlabe Fi212T can issue labels independently without a PC. Register label formats and data to the printer's internal memory via the SD card. Use the printer's keypad and display to select and print labels.



Image: Various examples of food display labels, including product name, ingredients, expiration date, and barcodes, demonstrating the printer's capability for easy label creation.



Image: Examples of custom-designed labels for vegetables, featuring product name, origin, price, and barcode, highlighting the printer's ability to create distinctive labels.

5.4 Printing Modes and Search Functions

The printer supports various issuance modes and search functions for efficient operation:

- **Continuous Issuance:** Prints labels continuously.
- **Peel-off Issuance:** Prints and separates labels for easy removal.
- **Call Search:** Search for registered label formats by name.
- **Barcode Search:** Search for registered label formats using a barcode.

優れた操作性

- グラフィック印字や多彩な文字表現が12dot/mm(305dpi)だから可能。
- 最大100mm/秒の高速印字。
- 63mmのラベル通紙幅(印字幅56mm)。
- 見やすい大型ディスプレイ(4行表示)と、大き目のテンキーで入力作業も確実。
- ドロップイン方式のラベルセットで簡単ラベル発行。
- 呼出し検索やバーコード検索機能で、早く・正確なラベル発行をサポート。

ドロップイン方式

連続発行

剥離発行

呼出し名検索

検索結果

Image: This image demonstrates the printer's operational features, including the drop-in label loading, continuous label issuance, peel-off label issuance, and the call name search function on the display.

多彩な発行モード

多彩なラベル発行が可能なため、食品表示のさまざまな用途に即対応ができます。

メニュー	1	呼出し発行 ●バーコード検索 ●呼出し名検索	青果JAN  保存温度変更  食品内容明細  食材管理 	 0001 キャベツ 0 212345 501054 123 ¥105	 保存温度変更日 消費期限 13. 7. 17 13. 7. 20 保存温度 4℃以下 ¥450 保存温度変更者 株式会社 サトースーパー 東京都〇〇区△△△〇〇〇	 洋風幕の内弁当 原材料名: 鶏肉、豚肉、牛肉、魚、野菜、調味料、卵、小麦粉、食塩、食酢、食油、食糖、食料添加物 内容量 1個 消費期限 13. 04. 27 4:25 保存方法 直射日光・高温多湿を避け保存 製造者 サトーフーズ(株) 東京都〇〇区△△△〇〇〇 TEL: 〇〇-5443-4401	 たまねぎ 開封日 13. 6. 12 AM 11:54 使用開始 13. 6. 12 PM 2:54 消費期限 13. 6. 12 AM 11:54
	2	オンライン発行(*SBPLコマンド) ●プライスカードなど		 サトーマーガリン <発酵バター> 10(0322) 298 円 (税込) 4953191310129	※SBPL(Sato Barcode Printer Language)は、サトーのラベルプリンタを制御する共通コマンド。 ラベルプリンタにSBPLを送信することにより、変化に富んだラベルタグを印刷することができます。		
	3	固定発行	消費税総額表示内容 ① 税込価格 ② 税込価格+(税込) ③ 税込価格+(本体¥〇〇〇) ④ 税込価格+(消費税¥〇) ⑤ 税込価格+(本体¥〇〇〇+消費税¥〇)	フォーマット選択(25/パターン)	 新鮮直送 0002 ちんげん菜 茨城県産 0 212345 012300 001 ¥380 (税込)	 税込 ¥298 (税込) 4 912345 678904 0002 トマト	
	4	値下げ CODE128仕様	お買得促進 	 表示価格より 20円引 02000080042041000205	5	値下げ JAN2段仕様	お買得品  200円 20%引 ¥224 0002 トマト
	6	牛个体識別仕様	牛个体 	 牛个体識別番号 1234567895 消費期限 13. 5. 6	■ 抗菌仕様 SIAA ISO 22196 for KOHKIN ■ 接触型害虫忌避加工 ■ 防滴I型対応		

Image: A comprehensive overview of the diverse label issuance modes available, such as Call Issuance (barcode or name search), Online Issuance (SBPL Command), Fixed Issuance (with 25 patterns), Price Reduction (CODE128), Price Increase (JAN2-level), and Cattle Individual Identification. Examples of various labels are shown.

6. MAINTENANCE

6.1 Cleaning

Regularly clean the exterior of the printer with a soft, dry cloth. For the print head, refer to the detailed cleaning instructions in the full manual (if available) or contact support. Ensure the printer is powered off before cleaning.

6.2 Label Roll Replacement

Replace label rolls as described in Section 4.3. Ensure the new roll is correctly seated and the leading edge is properly fed.

7. TROUBLESHOOTING

If you encounter issues with your Barlabe Fi212T, refer to the following common problems and solutions:

Problem	Possible Cause	Solution
Printer does not power on.	No power, faulty adapter, or discharged battery.	Check power connections, try a different outlet, or charge/replace the battery.

Problem	Possible Cause	Solution
Labels are not printing.	No label roll, incorrect label loading, or print head issue.	Ensure label roll is loaded correctly (Section 4.3). Check for paper jams.
Poor print quality.	Dirty print head, incorrect label type, or low print density setting.	Clean the print head. Ensure you are using compatible labels. Adjust print density settings if available.
Data transfer via SD card fails.	SD card not inserted correctly, corrupted data, or incompatible format.	Reinsert the SD card. Ensure data is saved in the correct format using FI Tool.

For further assistance, please contact Sato customer support.

8. SPECIFICATIONS

Feature	Description
Model Name	FI212T
Brand	Sato
Connectivity Technology	USB
Printing Technology	Thermal Transfer
Special Feature	Network Ready (via optional accessories)
Color	Black
Printer Output	Monochrome
Item Weight	600 grams (Note: Product description states 1.7kg without AC adapter, this might be a discrepancy or for a different configuration)
Max Media Size	A4
Print Media	Labels
Max Print Resolution (Monochrome)	600 dpi
Duplex Printing	No
Max Input Sheet Capacity	100
Max Output Sheet Capacity	100

9. WARRANTY AND SUPPORT

For warranty information, technical support, or service inquiries, please refer to the documentation included with your product or visit the official Sato website. Keep your purchase receipt as proof of purchase for warranty claims.