

Monitor Audio Apex AW-12-BK

Monitor Audio Apex AW-12 Subwoofer User Manual

Model: Apex AW-12-BK

INTRODUCTION

Thank you for choosing the Monitor Audio Apex AW-12 Subwoofer. This compact, high-performance subwoofer is designed to deliver powerful and precise bass, enhancing your home audio experience. Featuring a 12-inch C-CAM driver, a 500-watt Class D amplifier, and a high-efficiency switched-mode power supply, the Apex AW-12 integrates seamlessly into any compatible A/V system. This manual provides essential information for safe installation, optimal operation, and proper maintenance of your subwoofer.

SAFETY INFORMATION

Please read all safety instructions before operating the subwoofer. Keep this manual for future reference.

- **Power Source:** Connect the subwoofer only to an AC power source as indicated on the unit.
- **Ventilation:** Ensure adequate ventilation around the unit. Do not block ventilation openings.
- **Water and Moisture:** Do not expose the unit to rain, moisture, or excessive humidity.
- **Heat:** Keep the unit away from heat sources such as radiators, heat registers, stoves, or other apparatus that produce heat.
- **Servicing:** Do not attempt to service this product yourself. Refer all servicing to qualified service personnel.
- **Cleaning:** Disconnect from power before cleaning. Use a soft, dry cloth.

PRODUCT OVERVIEW

The Monitor Audio Apex AW-12 Subwoofer is designed for robust audio performance and aesthetic integration.



Figure 1: Front view of the Apex AW-12 Subwoofer, showcasing its sleek metallic black finish and the prominent 12-inch C-CAM driver.



Figure 2: Angled view of the Apex AW-12 Subwoofer, highlighting its compact cabinet design and aluminum side trims.

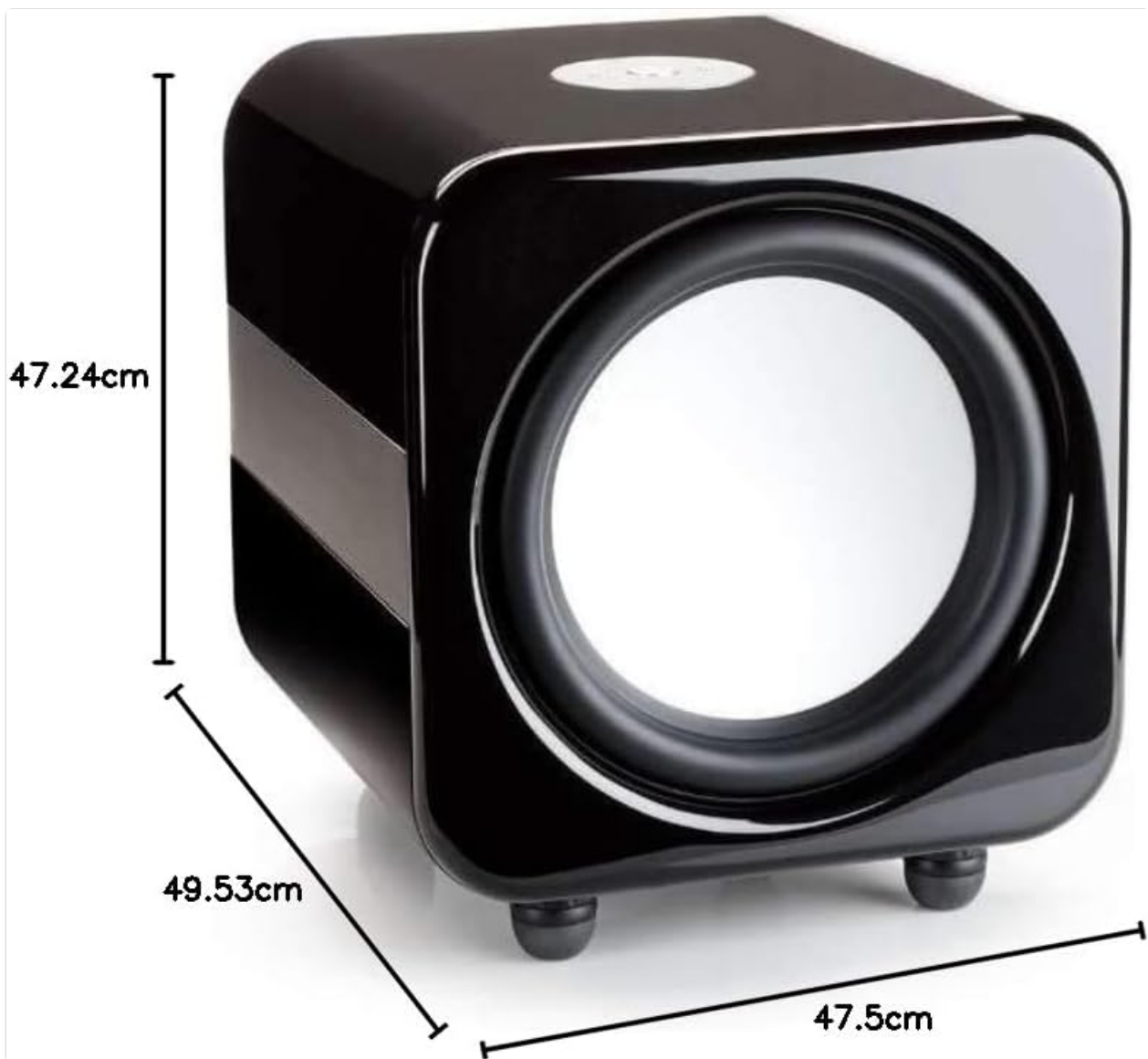


Figure 3: Diagram illustrating the dimensions of the Apex AW-12 Subwoofer: 49.5 cm (depth) x 47.5 cm (width) x 47.2 cm (height).

SETUP

1. Placement

The Apex AW-12 is designed as a floor-standing subwoofer. For optimal performance, place the subwoofer on a solid, level surface. Experiment with different positions in your room to find the best bass response, typically in a corner or along a wall.

2. Connections

Ensure all audio equipment is turned off before making connections.

1. **Audio Input:** Connect the subwoofer to your A/V receiver or processor's subwoofer output (LFE) using a high-quality RCA cable.
2. **12V Trigger Input:** If your A/V receiver or processor has a 12V trigger output, connect it to the subwoofer's 12V trigger input. This allows for automatic power activation/deactivation with your main system.
3. **Power Connection:** Once all audio connections are made, connect the supplied AC power cord to the subwoofer's power inlet and then to a suitable wall outlet.

OPERATING

Powering On/Off

If using the 12V trigger input, the subwoofer will power on automatically when your connected A/V receiver or processor is turned on. Otherwise, locate the power switch on the subwoofer and set it to the 'ON' position.

Volume and EQ Controls

The Apex AW-12 features top-mounted controls for volume and EQ settings. Adjust the volume to blend seamlessly with your main speakers. The EQ settings allow you to fine-tune the bass response to suit your room acoustics and personal preference. Refer to your A/V receiver's manual for initial setup and calibration of subwoofer levels.

MAINTENANCE

To ensure the longevity and optimal performance of your Monitor Audio Apex AW-12 Subwoofer, follow these maintenance guidelines:

- **Cleaning:** Regularly wipe the cabinet with a soft, dry, lint-free cloth. Avoid using abrasive cleaners, waxes, or solvents, as these can damage the finish.
- **Dust:** Use a soft brush or a vacuum cleaner with a brush attachment to gently remove dust from the driver and ventilation areas.
- **Environment:** Keep the subwoofer in a stable environment, away from direct sunlight, extreme temperatures, and high humidity.
- **Inspections:** Periodically check all cable connections to ensure they are secure.

TROUBLESHOOTING

If you experience issues with your Apex AW-12 Subwoofer, consult the following table for common problems and solutions.

Problem	Possible Cause	Solution
No sound from subwoofer	Power not connected or turned on Audio cable loose or faulty Receiver/processor settings incorrect	Check power cord and power switch Ensure audio cable is securely connected at both ends; try a different cable Verify subwoofer output is enabled and volume is up on your receiver/processor
Distorted or weak bass	Subwoofer volume too high/low Incorrect EQ settings Poor placement	Adjust subwoofer volume on the unit and/or receiver Experiment with EQ settings Try repositioning the subwoofer in the room
Subwoofer does not turn on with receiver (12V trigger)	12V trigger cable loose or faulty Receiver's 12V trigger output not active	Check 12V trigger cable connection Consult your receiver's manual to ensure 12V trigger output is enabled

If the problem persists after trying these solutions, please contact Monitor Audio customer support.

SPECIFICATIONS

Key technical specifications for the Monitor Audio Apex AW-12 Subwoofer:

Feature	Specification
---------	---------------

Feature	Specification
Model	Apex AW-12-BK
Speaker Type	Subwoofer
Subwoofer Diameter	12 inches (30.48 cm)
Amplifier Type	Class D
Wattage / Max Output Power	500 Watts
Power Source	AC
Material	Metallic
Color	Metallic Black
Dimensions (D x W x H)	49.5 cm x 47.5 cm x 47.2 cm (19.5 in x 18.7 in x 18.6 in)
Mounting Type	Floor Standing

WARRANTY INFORMATION


Monitor Audio products are manufactured to the highest quality standards. For detailed warranty terms and conditions, please refer to the warranty card included with your product or visit the official Monitor Audio website. Keep your proof of purchase for warranty claims.




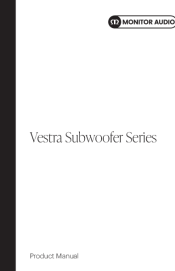

CUSTOMER SUPPORT

If you require further assistance or have questions not covered in this manual, please contact Monitor Audio customer support or your authorized dealer. Contact information can typically be found on the official Monitor Audio website or on your product packaging.

© 2024 Monitor Audio. All rights reserved.

Related Documents - Apex AW-12-BK

	<p>Monitor Audio AW-12 Subwoofer Owners Manual</p> <p>Comprehensive owners manual for the Monitor Audio AW-12 subwoofer, covering setup, specifications, safety, troubleshooting, and warranty information.</p>
---	---

	<p>Monitor Audio Silver W-12 Owner's Manual</p> <p>Comprehensive owner's manual for the Monitor Audio Silver W-12 subwoofer, covering setup, operation, features like Automatic Position Correction (APC), troubleshooting, and technical specifications.</p>
	<p>Monitor Audio CW8/CW10 Custom Subwoofer Series Owner's Manual</p> <p>Comprehensive owner's manual for the Monitor Audio CW8 and CW10 Custom Subwoofer Series, covering setup, operation, firmware updates, troubleshooting, and specifications.</p>
	<p>Monitor Audio Vestra Subwoofer Series: Product Manual</p> <p>Comprehensive product manual for the Monitor Audio Vestra Subwoofer Series, detailing setup, connections, controls, maintenance, and specifications for models W10, W12, and W15. Includes guidance for AV and stereo systems.</p>
	<p>Monitor Audio Vestra Subwoofer Series: Product Manual & Setup Guide</p> <p>Comprehensive product manual for the Monitor Audio Vestra Subwoofer Series, detailing setup, controls, care, maintenance, and specifications for the W10, W12, and W15 models.</p>
	<p>Monitor Audio Monitor Reference Series Owner's Manual</p> <p>This manual provides comprehensive instructions for the Monitor Audio Monitor Reference Series loudspeakers, including setup, positioning, wiring, and troubleshooting.</p>