

[manuals.plus](#) /

› [esinkin](#) /

› [esinkin Wireless Bluetooth Audio Receiver User Manual](#)

esinkin W29

esinkin Wireless Bluetooth Audio Receiver User Manual

Model: W29

PRODUCT OVERVIEW

The esinkin Wireless Bluetooth Audio Receiver is designed to enable wireless music streaming to your existing audio systems. It connects to computer speakers, home stereo systems, or other speaker setups via 3.5mm or RCA cables, allowing you to pair Bluetooth-enabled devices like smartphones or tablets for audio playback.

This device acts solely as a Bluetooth receiver, adding Bluetooth capabilities to your stereo system or active speakers. It does not have a built-in battery and requires external power via an AC-to-DC adapter or a USB cable.

PACKAGE CONTENTS

- esinkin Bluetooth Audio Receiver
- Power Adapter (AC-to-DC)
- USB Cable
- 3.5mm to RCA Audio Cable



Image: The esinkin Bluetooth Audio Receiver along with its power adapter, USB cable, and 3.5mm to RCA audio cable. The image also displays the device's dimensions: 50mm (1.97 inches) length, 50mm (1.97 inches) width, and 24mm (0.94 inches) height.

SETUP GUIDE

1. Connect to Power

Connect the provided power adapter to the receiver and plug it into a wall outlet. Alternatively, you can power the device using the USB cable connected to a USB power source.

2. Connect to Audio System

Use the included 3.5mm to RCA audio cable to connect the receiver to your audio system (e.g., computer speakers, home stereo, AV receiver). Insert the 3.5mm jack into the AUX input on the receiver and the RCA plugs (red and white) into the corresponding audio input jacks on your stereo system.



Image: A close-up view of the esinkin Bluetooth Audio Receiver's front panel, highlighting the 3.5mm AUX input and the red and white RCA input ports for connecting to an audio system.



Image: An illustrative diagram of the esinkin Bluetooth Audio Receiver, showing its internal circuitry and how external audio cables (3.5mm and RCA) connect to its input ports.

3. Pairing with a Bluetooth Device

Once powered on, the receiver will automatically enter pairing mode. The Bluetooth indicator light on top of the device will blink. On your smartphone, tablet, or other Bluetooth-enabled device, go to the Bluetooth settings and select "esinkin" from the list of available devices to pair.



Image: A hand demonstrating how to press the central button on the esinkin Bluetooth Audio Receiver. This button serves as a one-push control for ON/OFF (hold for 3 seconds) and START/PAUSE (click).

OPERATING INSTRUCTIONS

- **Power On/Off**

Press and hold the central button on the top of the receiver for approximately 3 seconds to turn the device on or off.

- **Music Playback Control**

Once paired, you can control music playback (start/pause) by clicking the central button on the receiver. Volume control should be managed directly from your paired Bluetooth device or your audio system.

- **Automatic Reconnection**

The receiver is designed to automatically reconnect with the last paired device when it is within range and Bluetooth is enabled on both devices.

- **Wireless Range**

The wireless range of the Bluetooth connection is approximately 10-12 meters (30-40 feet) indoors, provided there are no significant obstacles.

- **Compatible Devices**

This receiver works with most Bluetooth-enabled devices, including smartphones, tablets, computers, and laptops. It is compatible with active PC speakers, home stereo systems, and A/V receivers.



Image: The esinkin Bluetooth Audio Receiver integrated into a home stereo setup, demonstrating wireless audio streaming from a smartphone and a tablet to the connected speakers.



TURN OLD-FASHIONED SPEAKERS INTO BLUETOOTH SPEAKERS



Image: The esinkin Bluetooth Audio Receiver positioned on top of a traditional stereo receiver, visually representing its capability to upgrade existing audio systems with Bluetooth connectivity for wireless music playback.

MAINTENANCE

To ensure the longevity and optimal performance of your esinkin Bluetooth Audio Receiver, please follow these maintenance guidelines:

- **Cleaning:** Use a soft, dry cloth to clean the surface of the device. Do not use liquid cleaners or abrasive materials.
- **Environment:** Protect the device from extreme temperatures, direct sunlight, and high humidity. Avoid placing it near sources of heat or in damp environments.
- **Interference:** Avoid using the device in close proximity to other wireless devices that may cause interference.
- **Handling:** Handle the device with care. Do not drop it or subject it to strong impacts.

Important Warning: Always follow the manufacturer's instructions for handling and usage. Protect the device from extreme temperatures and moisture.

TROUBLESHOOTING

Problem	Possible Cause / Solution
No Power / Device Not Turning On	<p>Ensure the power adapter is securely connected to the receiver and a working power outlet.</p> <p>Verify that the USB cable (if used) is connected to a functional USB power source.</p> <p>Remember, this adapter does not have a built-in battery and requires continuous external power.</p>
Cannot Pair with Bluetooth Device	<p>Ensure the receiver is powered on and the Bluetooth indicator light is blinking, indicating pairing mode.</p> <p>Make sure Bluetooth is enabled on your source device (smartphone, tablet, etc.).</p> <p>Move your source device closer to the receiver.</p> <p>If previously paired, try "forgetting" the device on your source device's Bluetooth settings and re-pairing.</p> <p>Ensure no other devices are currently connected to the receiver.</p>
No Audio Output	<p>Verify that the audio cables (3.5mm or RCA) are securely connected between the receiver and your audio system.</p> <p>Check the input selection on your audio system to ensure it is set to the correct input where the receiver is connected.</p> <p>Increase the volume on both your source device and your audio system.</p> <p>Ensure the receiver is successfully paired with your Bluetooth device.</p>
Poor Audio Quality / Disconnections	<p>Move your Bluetooth source device closer to the receiver to improve signal strength.</p> <p>Avoid placing the receiver near sources of strong electromagnetic interference (e.g., Wi-Fi routers, microwaves).</p> <p>Ensure there are no major physical obstructions (thick walls, metal objects) between the receiver and your source device.</p> <p>Try restarting both the receiver and your Bluetooth source device.</p>

SPECIFICATIONS

Feature	Detail
Brand	esinkin
Model Number	W29
Connectivity Technology	Bluetooth
Power Source	AC Adapter / USB Cable (External Power Required)
Product Dimensions	5 x 5 x 2.4 cm (1.97 x 1.97 x 0.94 inches)
Item Weight	131.54 grams

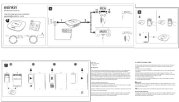
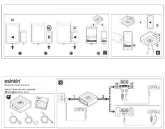
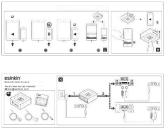
Feature	Detail
Material	Plastic
Special Feature	Lightweight
Wireless Range	Up to 10-12 meters (30-40 feet) indoors (without obstacles)

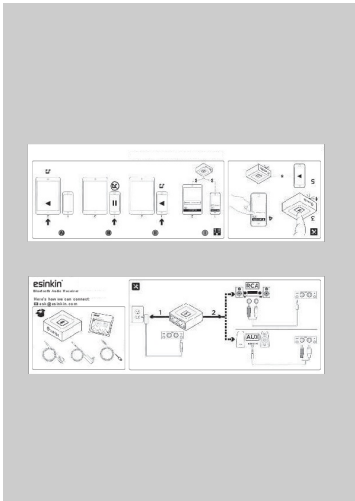
WARRANTY AND SUPPORT

For information regarding product warranty, please refer to the documentation provided with your purchase or contact the seller directly. Warranty terms may vary by region and retailer.

If you encounter any issues not covered in this manual or require further assistance, please contact esinkin customer support or the retailer from whom you purchased the product.

Related Documents - W29

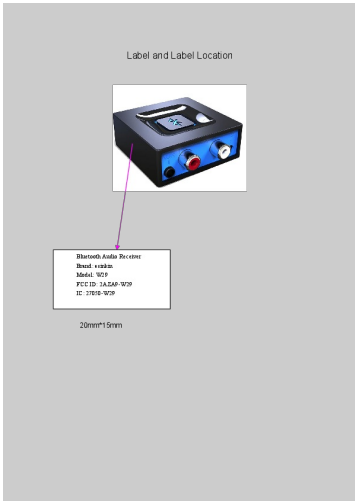
	<p>Esinkin A201 Bluetooth Receiver: Connection and Usage Guide</p> <p>Learn how to connect and use the Esinkin A201 Bluetooth Receiver to stream audio wirelessly. Includes setup instructions, pairing guide, and regulatory compliance information.</p>
	<p>esinkin Bluetooth Audio Receiver Setup and Compliance Information</p> <p>Learn how to set up and connect your esinkin Bluetooth Audio Receiver. This document also includes important FCC and IC compliance statements regarding device operation and interference.</p>
	<p>esinkin Bluetooth Audio Receiver Quick Start Guide</p> <p>Learn how to set up and connect your esinkin Bluetooth Audio Receiver. This guide covers Bluetooth pairing, RCA and AUX audio connections, and important FCC and IC regulatory information for wireless audio streaming.</p>



[esinkin Bluetooth Audio Receiver Quick Start Guide](#)

Learn how to set up and connect your esinkin Bluetooth Audio Receiver. This guide covers Bluetooth pairing, RCA and AUX audio connections, and important FCC and IC regulatory information for wireless audio streaming.

lang:i-klngon score:29 filesize: 267.08 K page_count: 2 document date: 2021-03-31



[esinkin W29 Bluetooth Audio Receiver: Label and Location Details](#)

Detailed information regarding the regulatory label and its placement on the esinkin W29 Bluetooth Audio Receiver, including brand, model, FCC ID, and IC numbers.

lang:i-klngon score:28 filesize: 302.58 K page_count: 1 document date: 2021-03-26