

FANTECH prioAir 8

FANTECH prioAir 8 Inline Mixed Flow Duct Fan User Manual

Model: prioAir 8

1. INTRODUCTION

This manual provides essential information for the safe and efficient installation, operation, and maintenance of your FANTECH prioAir 8 Inline Mixed Flow Duct Fan. Please read these instructions thoroughly before installation and retain this manual for future reference.

The FANTECH prioAir 8 is an 8-inch inline mixed flow duct fan designed for ventilation applications. It features a compact design, high efficiency, and quiet operation, making it suitable for various residential and light commercial settings. Constructed from a special composite material, the fan is lightweight and durable.

2. IMPORTANT SAFETY INSTRUCTIONS

WARNING: To reduce the risk of fire, electric shock, or injury to persons, observe the following:

- Read all instructions before installing or servicing this fan.
- Installation must be performed by a qualified electrician in accordance with all local and national electrical codes.
- Always disconnect power at the service panel before wiring, cleaning, or servicing the unit.
- Ensure the fan is properly grounded.
- Do not use this fan with any solid-state speed control device unless specifically designed for this fan.
- Do not use this fan in potentially explosive atmospheres.
- Keep fingers and foreign objects away from the fan blades during operation.
- This fan is for general ventilating use only. Do not use to exhaust hazardous or explosive materials and vapors.

3. WHAT'S IN THE BOX

Upon unpacking, please verify that all components are present and undamaged:

- FANTECH prioAir 8 Inline Mixed Flow Duct Fan unit
- Mounting hardware (e.g., screws, brackets) - *(Specific hardware may vary, refer to packaging)*

- User Manual (this document)



Figure 1: FANTECH prioAir 8 Inline Mixed Flow Duct Fan unit.

4. TECHNICAL SPECIFICATIONS

Feature	Specification
Model Number	prioAir 8
Product Dimensions	6 x 5 x 7 inches
Weight	8 Pounds
Brand	FANTECH
Voltage	120 Volts
Wattage	35 watts

Feature	Specification
Cooling Method	Forced Air
Noise Level	45 Decibels
Material	Composite
Maximum Rotational Speed	2400 RPM
Air Flow Capacity	647 Cubic Feet Per Minute (CFM)
Power Connector Type	3-Pin

5. INSTALLATION AND SETUP

5.1 Pre-Installation Checklist

- Ensure the installation location is suitable for an 8-inch duct fan.
- Verify that the power supply matches the fan's requirements (120V).
- Gather necessary tools: screwdriver, wire strippers, drill, duct tape/clamps.

5.2 Mounting the Fan

The prioAir 8 fan is designed for inline installation within ductwork. It can be mounted at any angle.

1. Select a secure location in your duct system where the fan can be easily accessed for maintenance.
2. Cut a section of the ductwork to accommodate the fan's length. Ensure the cut is clean and straight.
3. Insert the fan into the ductwork. The fan can be oriented to push or pull air, depending on your ventilation needs. Observe the airflow direction arrow on the fan housing.
4. Secure the fan to the ductwork using appropriate duct clamps or heavy-duty duct tape to ensure an airtight seal.
5. If additional support is needed, use the provided mounting brackets to secure the fan to a joist or other structural element.



Figure 2: Example of the prioAir 8 fan installed inline with ductwork.

5.3 Electrical Connection

CAUTION: Ensure power is disconnected at the circuit breaker before proceeding with electrical wiring.

1. Locate the electrical connection box on the fan housing.
2. Open the cover of the connection box.
3. Connect the power supply wires to the fan's terminals according to the wiring diagram provided inside the

connection box cover. Typically, this involves connecting Live (L), Neutral (N), and Ground (G) wires. The fan uses a 3-pin power connector type.

4. Ensure all connections are secure and properly insulated.
5. Close the connection box cover securely.

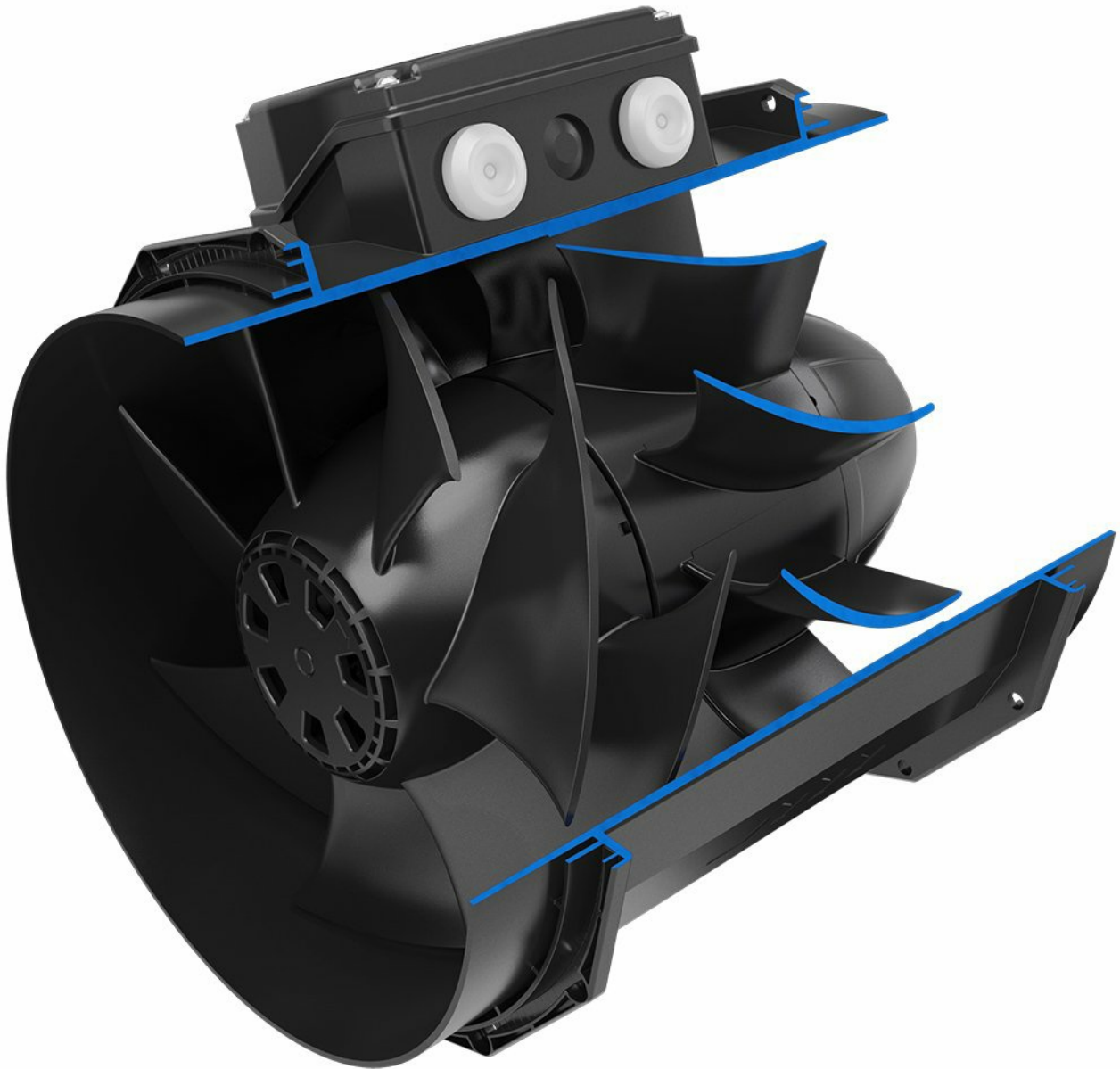


Figure 3: Exploded view illustrating the internal structure and location of the electrical connection box.

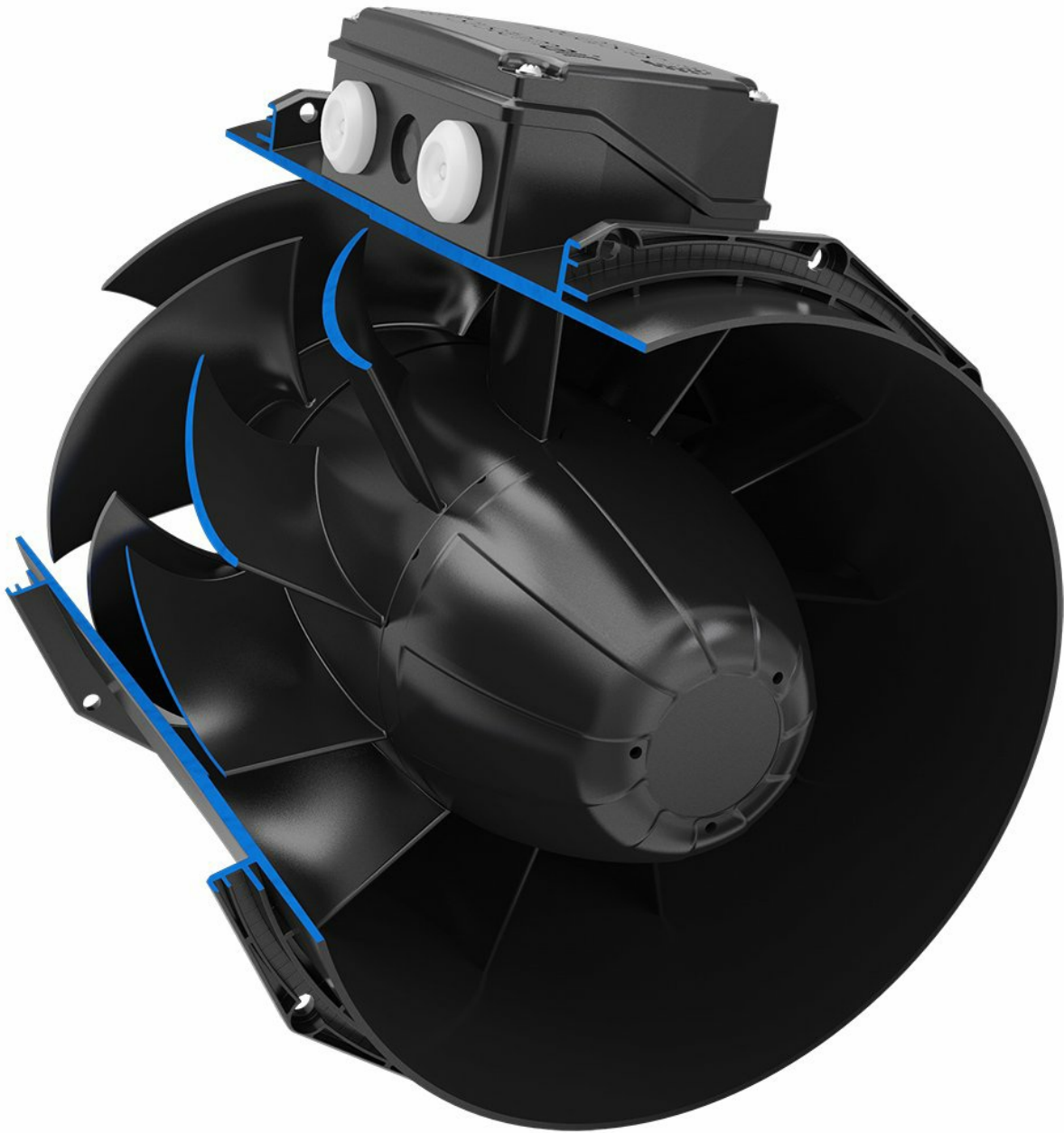


Figure 4: Detailed view of the fan's internal components, including the impeller and motor housing.

6. OPERATING INSTRUCTIONS

Once the FANTECH prioAir 8 fan is properly installed and wired, operation is straightforward:

1. Restore power to the circuit at the service panel.
2. If connected to a wall switch or thermostat, activate the switch or set the thermostat to the desired operating conditions.
3. The fan will begin to operate, moving air through the duct system.

The prioAir 8 is designed for continuous operation. Monitor the airflow and noise level to ensure proper function.

7. MAINTENANCE

WARNING: Always disconnect power to the fan at the service panel before performing any maintenance or cleaning.

Regular maintenance ensures optimal performance and extends the lifespan of your fan.

7.1 Cleaning the Fan Blades and Housing

Dust and debris can accumulate on the fan blades and inside the housing, reducing efficiency. Clean the fan periodically, depending on the operating environment.

1. Disconnect power to the fan.
2. Carefully remove the fan from the ductwork or access the internal components if possible.
3. Use a soft brush or a vacuum cleaner with a brush attachment to remove dust and debris from the fan blades and the interior of the housing.
4. For stubborn dirt, a damp cloth with mild detergent can be used, ensuring no moisture enters the motor or electrical components.
5. Allow all parts to dry completely before reassembling or restoring power.



Figure 5: Close-up view of the fan's impeller, highlighting the blades that require periodic cleaning.

7.2 Motor Lubrication

The fan motor is permanently lubricated and does not require additional lubrication.

8. TROUBLESHOOTING

Before contacting technical support, please review the following common issues and solutions:

Problem	Possible Cause	Solution
Fan does not start	No power supply Loose wiring connection Faulty switch/thermostat	Check circuit breaker and power source Verify all electrical connections are secure (with power off) Test or replace switch/thermostat
Reduced airflow	Clogged fan blades/housing Ductwork obstruction Incorrect fan orientation	Clean fan blades and housing Inspect ductwork for blockages Ensure fan is oriented for desired airflow direction
Unusual noise or vibration	Loose mounting Debris in fan Damaged impeller	Tighten mounting hardware Disconnect power and remove any debris Contact FANTECH support if impeller is damaged

9. WARRANTY AND SUPPORT

FANTECH products are manufactured to high-quality standards and are backed by a manufacturer's warranty. For specific warranty terms and conditions, please refer to the warranty card included with your product or visit the official FANTECH website.




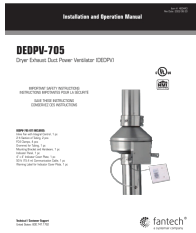
For technical assistance, replacement parts, or warranty claims, please contact FANTECH customer support:

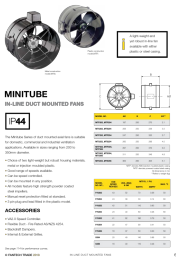
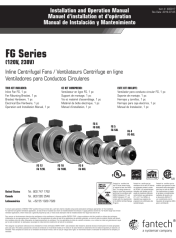
- **Website:** www.fantech.net
- **Phone:** Refer to the FANTECH website for regional contact numbers.

When contacting support, please have your product model number (prioAir 8) and purchase date available.

© 2023 FANTECH. All rights reserved.

Related Documents - prioAir 8

	<p>Fantech Product Catalog: Comprehensive Ventilation Solutions</p> <p>Discover Fantech's extensive product catalog featuring a wide range of ventilation solutions including inline fans, radon mitigation systems, bath fans, dryer exhaust fans, fresh air appliances, filtration systems, and kitchen ventilation. Enhance indoor air quality with Fantech's innovative and reliable products.</p>
	<p>Fantech FSD Series Fan Installation Instructions and Manual</p> <p>Comprehensive installation instructions, safety warnings, mounting illustrations, dimensional data, wiring schematics, and warranty information for Fantech FSD Series inline duct fans, including models FSD 18, FSD 20, FSD 22, and FSD 26.</p>
	<p>Fantech Gamma Ultra EC Series Roof Mounted Exhaust Fans - Technical Overview</p> <p>Comprehensive technical details for Fantech's Gamma Ultra EC Series of energy-efficient, mixed-flow roof-mounted exhaust fans. This document covers product features, applications, construction, technical specifications, and performance data for various models.</p>
	<p>Fantech DEDPV-705 Dryer Exhaust Duct Power Ventilator Installation and Operation Manual</p> <p>This manual provides comprehensive instructions for the installation and operation of the Fantech DEDPV-705 Dryer Exhaust Duct Power Ventilator. It includes essential safety information, step-by-step installation guides, sequence of operation, maintenance recommendations, troubleshooting tips, and warranty details.</p>

 <p>MINITUBE IN-LINE DUCT MOUNTED FANS</p> <p>FP44</p> <p>Technical specifications, dimensions, performance data, and available accessories for commercial and industrial ventilation applications.</p>	<p>Fantech Minitube In-Line Duct Mounted Fans - Technical Specifications</p> <p>Explore the Fantech Minitube series of in-line duct mounted axial fans. This document provides detailed technical specifications, dimensions, performance data, and available accessories for commercial and industrial ventilation applications.</p>
 <p>FG Series CENTRIFUGAL FAN</p> <p>Installation and Operation Manual Manuel d'Installation et d'Operation Manual de Installation / Montagem</p> <p>Technical specifications, dimensions, installation procedures, wiring diagrams, troubleshooting, maintenance, and warranty information.</p>	<p>Fantech FG Series Inline Centrifugal Fan Installation and Operation Manual</p> <p>Installation and operation guide for Fantech FG Series inline centrifugal duct fans. Includes safety warnings, dimensions, installation procedures, wiring diagrams, troubleshooting, maintenance, and warranty information.</p>