

Vestil PDA-1627-C-S

Vestil PDA-1627-C-S Aluminum Plate Dolly User Manual

Model: PDA-1627-C-S

INTRODUCTION

This manual provides essential information for the safe and effective use of the Vestil PDA-1627-C-S Aluminum Plate Dolly. Please read this manual thoroughly before operation to ensure proper handling, maintenance, and to prevent injury or damage to the equipment.

The Vestil PDA-1627-C-S is an aluminum plate dolly designed for material handling. It features a heavy-duty raised diamond tread plate for strength and enhanced grip, making it suitable for transporting various items within its specified load capacity.

SAFETY INSTRUCTIONS

- Always inspect the dolly before each use for any signs of damage, wear, or loose components. Do not use if damaged.
- Do not exceed the maximum load capacity of 2800 pounds. Overloading can cause structural failure and injury.
- Ensure the load is centered and stable on the dolly before moving. Uneven loads can cause tipping.
- Operate the dolly on flat, level surfaces. Avoid inclines, declines, or uneven terrain.
- Maintain a clear path when moving the dolly. Be aware of surroundings and potential obstacles.
- Do not ride on the dolly or allow others to do so.
- Wear appropriate safety footwear when operating the dolly.

SETUP

The Vestil PDA-1627-C-S Aluminum Plate Dolly typically arrives pre-assembled and ready for use. However, it is crucial to perform a pre-operation check to ensure all components are secure and functional.

1. **Unpacking:** Carefully remove the dolly from its packaging. Inspect for any shipping damage.

2. **Wheel Inspection:** Verify that all four cast steel wheels are securely attached to the dolly frame. Check that the wheels rotate freely without obstruction.
3. **Frame Integrity:** Examine the aluminum plate and frame for any cracks, bends, or deformities. The raised diamond tread plate should be intact.
4. **Hardware Check:** Ensure all bolts, nuts, and fasteners are tight. Do not overtighten.



Image: Top-down view of the Vestil PDA-1627-C-S Aluminum Plate Dolly, showcasing its aluminum diamond tread plate and four cast steel wheels. This view highlights the overall structure and surface of the dolly.

OPERATING INSTRUCTIONS

Proper operation ensures efficiency and safety when using the aluminum plate dolly.

1. **Load Placement:** Carefully place the item to be moved onto the center of the dolly's aluminum plate. Distribute the weight as evenly as possible to maintain balance.
2. **Weight Limit:** Ensure the total weight of the item does not exceed the dolly's 2800 lb. capacity.
3. **Movement:** Gently push or pull the dolly to move the load. Avoid sudden jerks or rapid changes in direction.
4. **Navigating Obstacles:** When encountering small obstacles or uneven surfaces, proceed with caution. If the obstacle is too large, consider an alternative route or method.
5. **Stopping:** Bring the dolly to a complete stop before attempting to remove the load.



Image: Angled view of the Vestil PDA-1627-C-S Aluminum Plate Dolly, showing the side profile and the robust construction of the cast steel wheels. This perspective emphasizes the dolly's low profile and stability.

MAINTENANCE

Regular maintenance will extend the life of your Vestil PDA-1627-C-S dolly and ensure safe operation.

- **Cleaning:** Clean the aluminum plate and wheels periodically to remove dirt, debris, and grime. Use a mild detergent and water, then dry thoroughly.
- **Wheel Bearings:** Inspect wheel bearings for smooth operation. If wheels are stiff or noisy, they may require lubrication or replacement. Consult a qualified technician if unsure.
- **Fasteners:** Periodically check all bolts and nuts for tightness. Retighten as necessary, but do not overtighten.
- **Storage:** Store the dolly in a dry, clean environment when not in use to prevent corrosion and damage.



Image: Front view of the Vestil PDA-1627-C-S Aluminum Plate Dolly, showing the width of the plate and the alignment of the front wheels. This view emphasizes the compact design and the sturdy wheel assembly.

TROUBLESHOOTING

This section addresses common issues you might encounter with your dolly.

Problem	Possible Cause	Solution
Dolly is difficult to move or wheels are stiff.	Debris caught in wheels/bearings. Lack of lubrication in wheel bearings. Damaged wheel or bearing.	Clean wheels and remove any obstructions. Lubricate wheel bearings if applicable (consult manufacturer guidelines). Inspect wheels for damage; replace if necessary.

Problem	Possible Cause	Solution
Dolly tips easily or is unstable.	Load is not centered or is too heavy. Operating on uneven or inclined surfaces. Damaged frame or loose wheels.	Re-center the load and ensure it is within capacity. Move to a flat, level surface. Inspect frame and wheels for damage; tighten any loose fasteners.

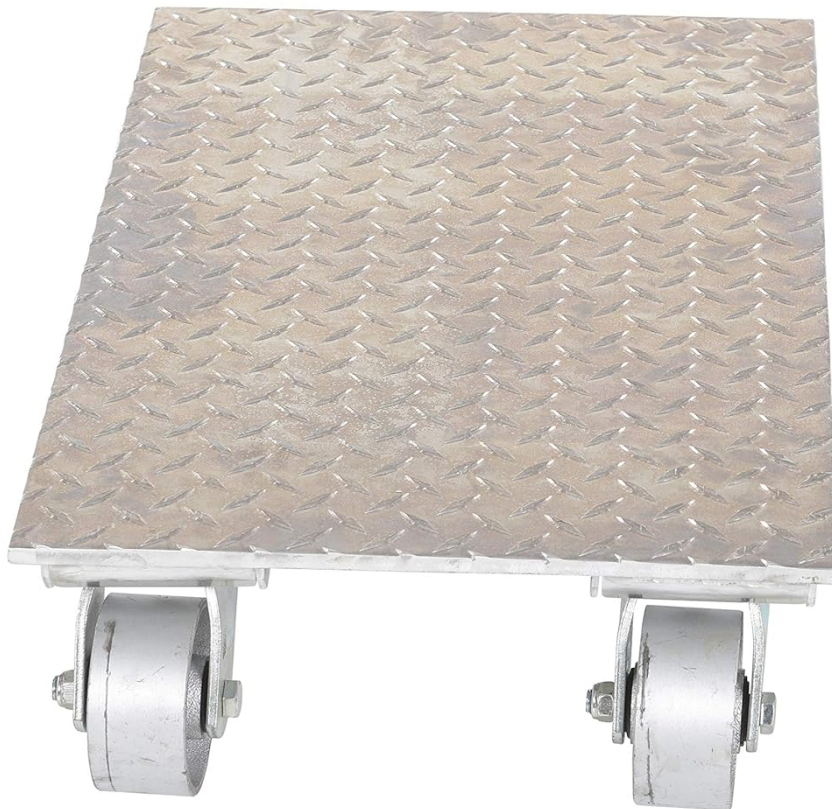


Image: Rear view of the Vestil PDA-1627-C-S Aluminum Plate Dolly, providing a clear look at the rear wheels and the underside of the aluminum plate. This view confirms the sturdy construction from all angles.

SPECIFICATIONS

Attribute	Detail
Brand	Vestil
Model Number	PDA-1627-C-S
Material	Alloy Steel, Aluminum
Color	Silver
Style	Heavy-duty
Product Dimensions (L x W x H)	27" x 16" x 6.19"

Attribute	Detail
Item Weight	35.8 pounds
Wheel Type	Cast Steel
Load Capacity	2800 Pounds
Number of Wheels	4
UPC	691215090780

MANUFACTURER INFORMATION







Vestil Manufacturing Company is an industry leader in the production and distribution of material handling equipment. They focus on engineering new designs and products that increase productivity, improve workplace ergonomics, and decrease worker injury.



Image: Exterior view of a Vestil Manufacturing Company facility, showcasing the company's commitment to industrial solutions. This image provides a visual representation of the manufacturer's presence.



Image: The official Vestil company logo, featuring the brand name in blue text with a yellow and black swoosh. The tagline "We've Got It!" is also visible.

	<p>Vestil FORK-R-54 Fork Extension Storage Rack Instruction Manual</p> <p>Official instruction manual for the Vestil FORK-R-54 Fork Extension Storage Rack. Includes specifications, safety, assembly, usage, maintenance, and warranty information.</p>
	<p>Vestil Limited Warranty - Product Information</p> <p>Official limited warranty document from Vestil Manufacturing Corporation detailing product coverage, warranty periods, exclusions, and service request procedures.</p>
	<p>Vestil DRUM-55S Portable Drum Jack Operation and Service Manual</p> <p>This manual provides comprehensive operational, service, and maintenance guidelines for the Vestil DRUM-55S Portable Drum Jack. It includes detailed specifications, safety warnings, operating procedures, troubleshooting tips, a complete parts list, and warranty information.</p>
	<p>Vestil SWA-50, SWA-70, SWA-51-AR Semi-Automatic Stretch Wrap Machine Instruction Manual</p> <p>Official instruction manual for Vestil Manufacturing's SWA-50, SWA-70, and SWA-51-AR semi-automatic stretch wrap machines. Covers installation, operation, maintenance, troubleshooting, and safety.</p>
	<p>Vestil OLA-4 Series Balanced Load Lifters - User and Maintenance Manual</p> <p>This comprehensive manual provides detailed instructions for the safe operation, maintenance, and specifications of Vestil OLA-4 series balanced load lifters, including models OLA-4-42, OLA-4-36-DLX, and OLA-4-42-DLX. It covers essential safety guidelines, adjustment procedures, load testing, inspections, and warranty information for industrial material handling applications.</p>
	<p>Vestil 2-Ton Foldable Engine Hoist EHN-40-C Owner's Manual and Operating Instructions</p> <p>Comprehensive owner's manual and operating instructions for the Vestil EHN-40-C 2-ton foldable engine hoist, including specifications, safety warnings, operating procedures, and a parts list.</p>