

## De'Longhi PAC EX100

# De'Longhi Pinguino PAC EX100 Portable Air Conditioner User Manual

Model: PAC EX100

## 1. INTRODUCTION

This manual provides essential information for the safe and effective use of your De'Longhi Pinguino PAC EX100 portable air conditioner. Please read these instructions carefully before operating the appliance and retain them for future reference. This unit is designed to provide cooling, dehumidification, and fan functions for indoor spaces.

## 2. SAFETY INFORMATION

Always observe basic safety precautions when using electrical appliances to reduce the risk of fire, electric shock, and personal injury.

- Ensure the power supply voltage matches the rating label on the appliance.
- Do not operate the unit with a damaged cord or plug.
- Keep the appliance away from heat sources and direct sunlight.
- Do not block air inlets or outlets.
- Do not insert objects into the air vents.
- This appliance is not intended for use by persons (including children) with reduced physical, sensory or mental capabilities, or lack of experience and knowledge, unless they have been given supervision or instruction concerning use of the appliance by a person responsible for their safety.
- Always unplug the appliance before cleaning or maintenance.
- The appliance contains R290 refrigerant. Do not attempt to interfere with the refrigerant circuit. Contact qualified personnel for service.

## 3. PRODUCT OVERVIEW

Familiarize yourself with the main components of your De'Longhi Pinguino PAC EX100.







**Figure 1:** Front view of the De'Longhi Pinguino PAC EX100 portable air conditioner. The unit is white with a black control panel strip on the right side, featuring a digital display and buttons.



**Figure 2:** Close-up of the digital control panel. It shows a temperature display (e.g., 18°C) and various mode indicators, along with touch buttons for power, mode selection, temperature adjustment, and fan speed.



**Figure 3:** Detail of the adjustable air outlet flap located on the top of the unit, which directs the airflow.





**Figure 4:** The durable castor wheels on the base of the unit, designed for easy mobility across various floor types.



**Figure 5:** Side view of the air conditioner, highlighting the integrated handle for lifting and the air intake vents.



**Figure 6:** Rear view of the unit showing the exhaust air outlet and the flexible hose connected, directing hot air away from the room.



**Figure 7:** Side view with the air filter covers open, revealing the washable air filters for maintenance.





**Figure 8:** Overview of all included accessories: exhaust hose, various window kit components, and the remote control.

# PRODUKTDATENBLATT

[gemäß EU 626/2011, Anhang IV]

Warenzeichen des Lieferanten	De'Longhi
Modell	PAC EX100 Silent

Bezeichnung	Symbol	Wert	Einheit
Schallleistungspegel bei Norm-Nennbedingungen		64	dB
Kältemittel		R290	
Treibhauspotenzial	GWP	3	kg CO <sub>2</sub> Aq.
Der Austritt von Kältemittel trägt zum Klimawandel bei. Kältemittel mit geringerem Treibhauspotenzial tragen im Fall eines Austretens weniger zur Erderwärmung bei als solche mit höherem Treibhauspotenzial. Dieses Gerät enthält Kältemittel mit einem Treibhauspotenzial von 3. Somit hatte ein Austreten von 1 kg dieses Kältemittels 3 Mal größere Auswirkungen auf die Erderwärmung als 1 kg CO <sub>2</sub> , bezogen auf hundert Jahre. Keine Arbeiten am Kältekreislauf vornehmen oder das Gerät zerlegen – stets Fachpersonal hinzuziehen.			
Wirkungsgrad als jahreszeitbedingte Leistungszahl	EER <sub>rated</sub>	3,6	-
Energieeffizienzklasse		A++	
Indikativer stündlicher Stromverbrauch <sup>1</sup>	Q <sub>SD</sub>	0,7	kW / 60min
Nenn-Leistung im Kühlbetrieb (max.)	P <sub>rated</sub>	2,5	kW
Nenn-Leistungsaufnahme im Kühlbetrieb	P <sub>EER</sub>	0,1	kW
Nenn-Leistungsaufnahme im Bereitschaftszustand	P <sub>SB</sub>	0,8	kW
Schallleistungspegel	L <sub>WA</sub>	49-53	dB(A)
Kontaktadresse für weitere Informationen		De'Longhi Deutschland GmbH Carl-Ulrich Straße 4 63263 Neu-Isenburg <a href="http://www.delonghi.com/kontakt">www.delonghi.com/kontakt</a>	

<sup>1</sup> Energieverbrauch 0,7 kWh je 60 Minuten, auf der Grundlage von Ergebnissen der Normprüfung. Der tatsächliche Verbrauch hängt von der Nutzung und vom Standort des Geräts ab.



**Figure 9:** The remote control for the PAC EX100, featuring buttons for power, mode, fan speed, temperature adjustment, and timer functions.

## 4. SETUP AND INSTALLATION

Proper installation is crucial for the efficient operation of your air conditioner.

### 4.1 Unpacking

1. Carefully remove the appliance from its packaging. Due to its weight (approximately 30 kg), it is recommended to have assistance during unpacking and placement.

2. Remove all packing materials and ensure no components are missing. Refer to Figure 8 for a list of included accessories.

## 4.2 Exhaust Hose Installation

The exhaust hose must be connected to expel hot air outside the room.

1. Attach the hose connector to the exhaust outlet on the rear of the unit (see Figure 6).
2. Connect the other end of the flexible exhaust hose to the window outlet adapter.
3. Insert the window outlet adapter into the window kit. The window kit is designed to fit various window types and should be securely installed to prevent hot air from re-entering the room.
4. Minimize the length and bends of the exhaust hose for optimal performance. A shorter, straighter hose allows for more efficient heat expulsion.

## 4.3 Placement

Position the unit on a flat, stable surface. Ensure there is at least 30 cm of clear space around the unit for proper airflow. The unit should be placed near a window or opening for the exhaust hose.



**Figure 10:** The PAC EX100 positioned in a bedroom, demonstrating typical setup with the exhaust hose directed out a partially open window using the window kit.



**Figure 11:** The PAC EX100 in a living room environment, illustrating its compact design and how it can be integrated into various living spaces while exhausting air through a window.

## 5. OPERATING INSTRUCTIONS

Your PAC EX100 offers multiple operating modes for personalized comfort.

### 5.1 Control Panel and Remote Control

The unit can be operated via the touch control panel on the top of the unit or using the included LCD remote control (Figure 9).

### 5.2 Power On/Off

Press the **ON/OFF** button to turn the appliance on or off.

### 5.3 Mode Selection

Press the **MODE** button to cycle through the available functions:

- **Cooling Mode (*Snowflake icon*):** For cooling and dehumidifying the room. Adjust the desired temperature using the + and - buttons.
- **Dehumidifying Mode (*Water drop icon*):** Reduces humidity in the room. The unit can remove up to 32 liters of moisture per day.
- **Fan Mode (*Fan icon*):** Circulates air without cooling. Select from 3 fan speeds.

### 5.4 Temperature Adjustment

In Cooling Mode, use the + or - buttons to set your desired temperature. The recommended comfortable temperature range is 20-22°C (68-72°F).

## 5.5 Fan Speed

In Cooling or Fan Mode, press the **FAN SPEED** button to select between low, medium, or high fan speeds.

## 5.6 Timer Function

The 24-hour digital timer allows you to program the unit to turn on or off automatically. Press the **TIMER** button and use + or - to set the desired time in 30-minute intervals.

## 5.7 Silent System

The PAC EX100 features a Silent System designed to reduce operational noise. While no air conditioner is completely silent, this mode optimizes settings for quieter operation, particularly useful during nighttime. Expect a consistent, low hum rather than complete silence.

## 5.8 Real Feel Technology

This technology automatically adjusts temperature and humidity to achieve and maintain optimal comfort. In this mode, the unit may cycle between active cooling and standby to maintain the ideal environment, which can result in variations in noise levels as the compressor engages and disengages.

# 6. MAINTENANCE

---

Regular maintenance ensures optimal performance and longevity of your appliance.

## 6.1 Cleaning the Air Filters

The air filters should be cleaned regularly (e.g., every two weeks) to prevent dust buildup and maintain efficiency.

1. Turn off the appliance and unplug it from the power outlet.
2. Remove the air filter covers (Figure 7).
3. Gently remove the filters.
4. Clean the filters with a vacuum cleaner or wash them under running water. Ensure they are completely dry before reinserting.
5. Replace the filters and close the covers.

## 6.2 Draining Condensate Water

During dehumidification, water collects inside the unit. The PAC EX100 typically evaporates most of this water, but in high humidity conditions, the internal tank may fill. When this occurs, the unit will stop operating and display an indicator. Drain the water as follows:

1. Turn off the appliance and unplug it.
2. Place a shallow pan or container under the drainage outlet at the bottom rear of the unit.
3. Remove the drain cap and plug.
4. Allow all water to drain completely.
5. Replace the drain plug and cap securely.

## 6.3 Storage

If the unit will not be used for an extended period:

1. Drain all condensate water.
2. Clean the air filters.



- 3. Unplug the unit and coil the power cord.
- 4. Store the unit upright in a dry, cool place, preferably covered to protect it from dust.

## 7. TROUBLESHOOTING

Before contacting customer service, refer to the following table for common issues and solutions.

Problem	Possible Cause	Solution
Unit does not turn on	No power supply; Power cord not plugged in; Fuse blown; Internal water tank full.	Check power connection; Plug in securely; Check household fuse/circuit breaker; Drain condensate water.
Unit cools insufficiently	Air filters dirty; Air intake/outlet blocked; Room too large; Doors/windows open; Exhaust hose not properly installed or too long/bent.	Clean air filters; Clear obstructions; Ensure room size is within unit capacity (up to 110 m³); Close doors/windows; Check exhaust hose for proper installation and minimal length/bends.
Unit is noisy	Fan speed too high; Unit not on a level surface; Compressor operating (normal).	Reduce fan speed; Place unit on a flat surface; Note that some noise is normal during compressor operation, especially when cooling rapidly. Use Silent mode for reduced noise.
Unit leaks water	Drain cap/plug loose or missing; Unit tilted.	Ensure drain cap/plug is securely fastened; Place unit on a level surface.

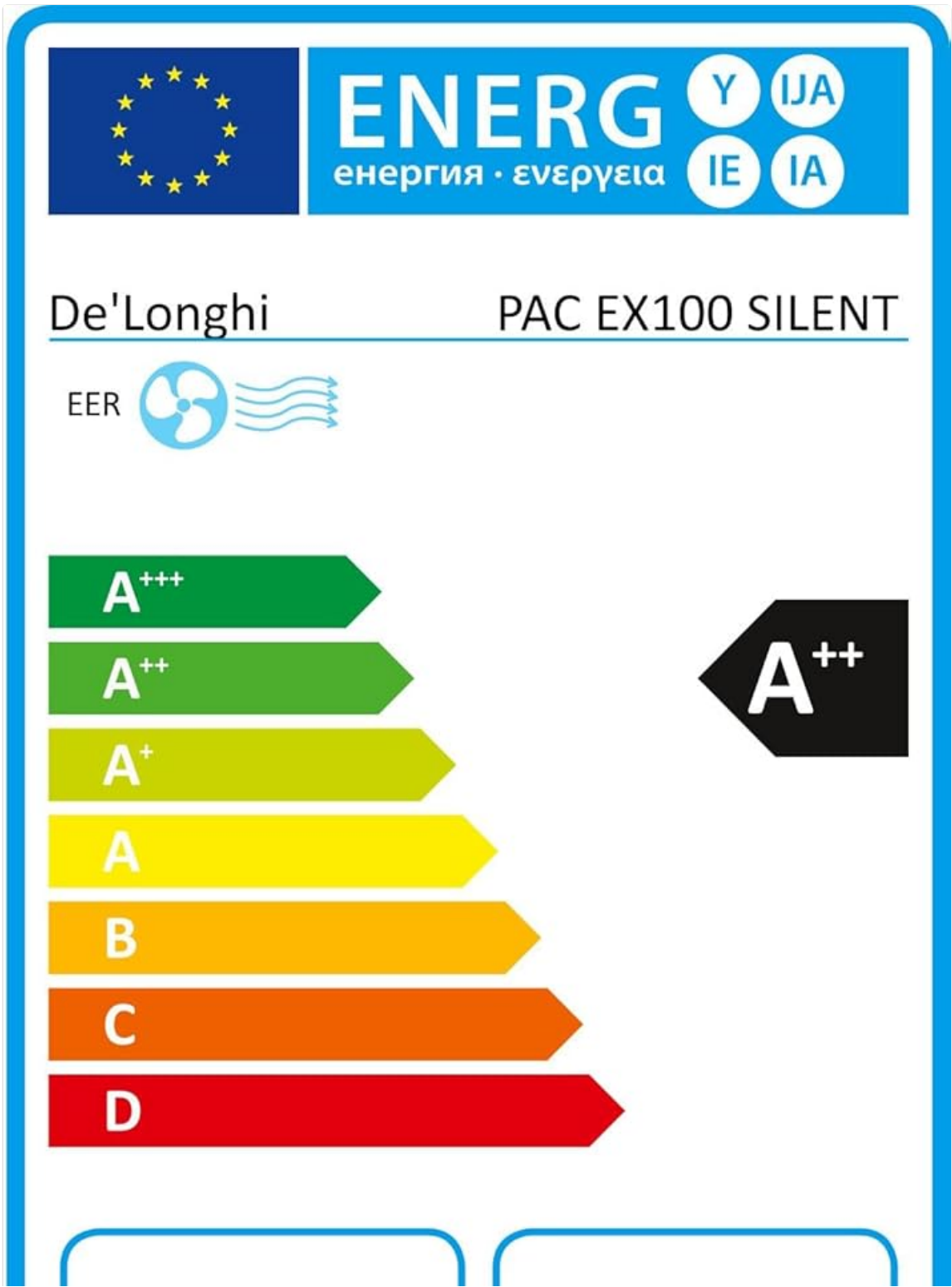
## 8. TECHNICAL SPECIFICATIONS

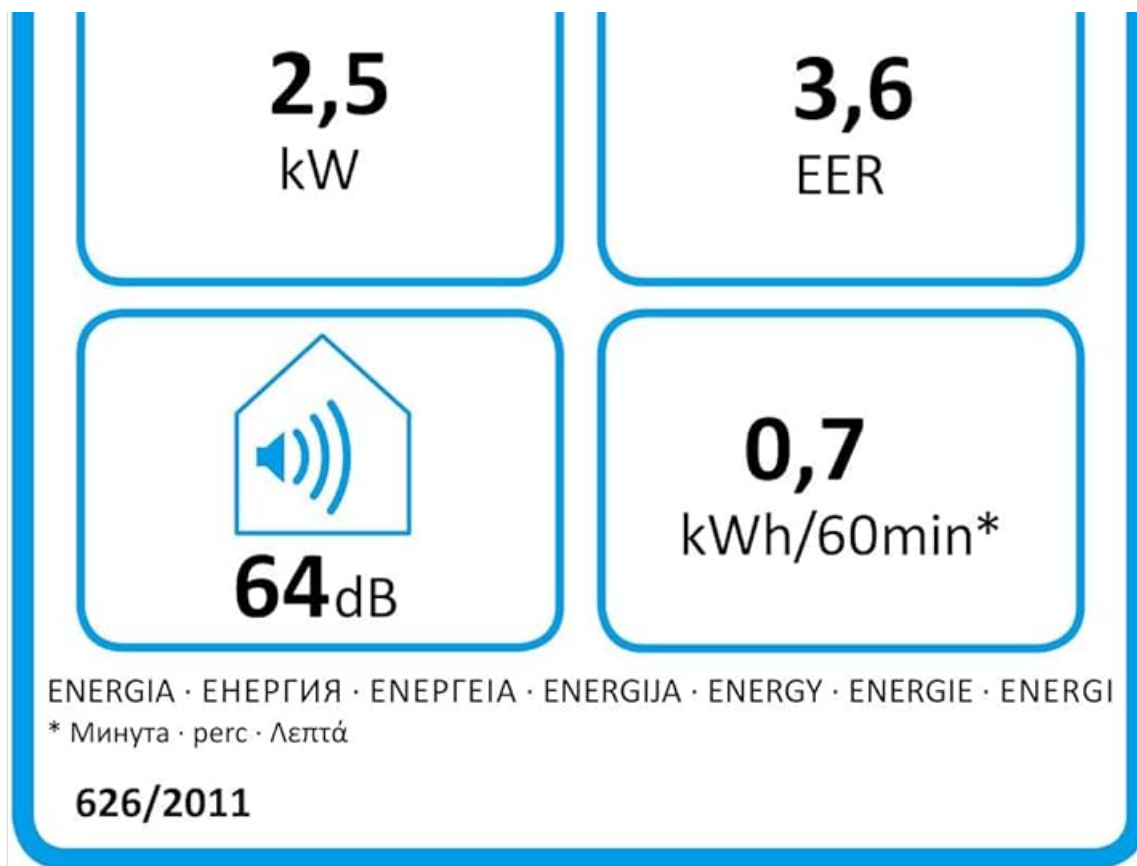
Key technical data for the De'Longhi Pinguino PAC EX100.

Specification	Value
Brand	De'Longhi
Model Number	PAC EX100
Dimensions (L x W x H)	44.5 x 39 x 80.5 cm
Weight	30 kg
Energy Efficiency Class	A++
Cooling Capacity	2.5 kW (2500 Watts)
Annual Energy Consumption	1 kWh (per 60 minutes, based on standard tests)
Noise Level	64 dB
Dehumidification Capacity	Up to 32 l/day

Specification	Value
Refrigerant	R290
Voltage	230 Volts
Material	Polycarbonate
Special Features	Indicator lights, Real-Feel technology, Silent System, 24-hour digital timer, LCD remote control

For detailed product information and energy label, please refer to the EPREL database:  
<https://eprel.ec.europa.eu/qr/126570>





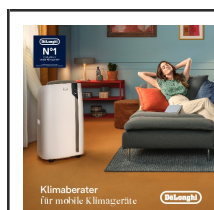
**Figure 12:** Energy label for the De'Longhi Pinguino PAC EX100, indicating an A++ energy efficiency rating, 2.5 kW cooling capacity, 64 dB noise level, and 0.7 kWh/60min energy consumption.

## 9. WARRANTY AND SUPPORT

Your De'Longhi Pinguino PAC EX100 is covered by a manufacturer's warranty. Please refer to the warranty card included with your product for specific terms and conditions. For technical assistance, spare parts, or repairs, please contact De'Longhi customer service or visit their official website.

© 2025 De'Longhi. All rights reserved.


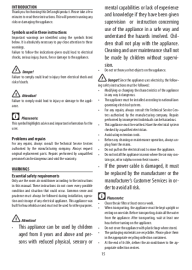
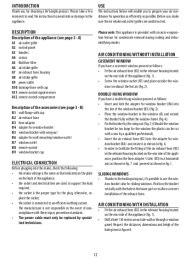
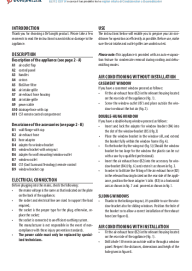

### Related Documents - PAC EX100



#### [De'Longhi Mobile Air Conditioners: Your Guide to Optimal Comfort](#)

Explore De'Longhi Pinguino mobile air conditioners. Learn about their advanced technologies like Silent System, Real Feel, UV-Carelight, and energy efficiency, and find the perfect model for your comfort needs.



	<p><a href="#">De'Longhi Pinguino PAC EX120 Portable Air Conditioner User Manual - Setup, Operation &amp; Troubleshooting</a></p> <p>Comprehensive user manual for the De'Longhi Pinguino PAC EX120 portable air conditioner. Covers setup, operation modes (cooling, dehumidifier, fan), ECO REAL FEEL, timer, remote control, cleaning, maintenance, technical specs, and troubleshooting.</p>
	<p><a href="#">De'Longhi PAC EX100 Portable Air Conditioner User Manual and Guide</a></p> <p>Comprehensive user manual for the De'Longhi PAC EX100 portable air conditioner, covering setup, operation, safety, maintenance, and troubleshooting for optimal performance.</p>
	<p><a href="#">De'Longhi Pinguino PAC EL98 ECO Real Feel Air Conditioner User Manual</a></p> <p>Comprehensive user manual for the De'Longhi Pinguino PAC EL98 ECO Real Feel Air Conditioner, covering setup, operation, features like ECO Real Feel, troubleshooting, and maintenance.</p>
	<p><a href="#">De'Longhi Pinguino PAC EL112 CST W Air Conditioner User Manual and Guide</a></p> <p>Comprehensive user manual for the De'Longhi Pinguino PAC EL112 CST W portable air conditioner, covering installation, operation, remote control, troubleshooting, and maintenance.</p>
	<p><a href="#">De'Longhi PAC EM Portable Air Conditioner User Manual</a></p> <p>Comprehensive user manual for the De'Longhi PAC EM portable air conditioner, covering setup, operation, maintenance, and troubleshooting for optimal performance and longevity.</p>