

## Sigma 302965

# Sigma 30mm F1.4 Contemporary DC DN Lens for Sony E Instruction Manual

This manual provides detailed instructions for the proper use, setup, operation, and maintenance of your Sigma 30mm F1.4 Contemporary DC DN Lens for Sony E-mount cameras.

## 1. INTRODUCTION

---

The Sigma 30mm F1.4 DC DN Contemporary lens is designed for APS-C mirrorless cameras, including Sony E-mount systems. It features a wide F1.4 aperture, making it suitable for low-light conditions and achieving shallow depth of field. Its compact size enhances portability, and the stepping motor ensures fast and accurate autofocus, beneficial for both photography and video recording.



Image 1.1: The Sigma 30mm F1.4 Contemporary DC DN Lens. This image displays the lens from a side profile, highlighting its compact design and the textured focus ring.

## 2. PRODUCT FEATURES

---

- **Mount Compatibility:** Specifically designed for Sony E-mount cameras.
- **Aperture:** Features a large F1.4 maximum aperture for excellent low-light performance and creative depth of field.
- **Diaphragm Blades:** Equipped with nine rounded aperture blades for smooth and pleasing bokeh.
- **Autofocus System:** Utilizes a stepping motor for fast, quiet, and precise autofocus, ideal for both still photography and video.
- **Optical Design:** Incorporates high-quality optical elements, including aspherical and high-refractive index elements, to ensure sharp images with minimal aberrations.
- **Compact Design:** Part of Sigma's Contemporary line, balancing high image quality with a portable and lightweight form factor.

## 3. WHAT'S IN THE BOX

---

Upon opening the product packaging, verify that all the following items are included:

- Sigma 30mm F1.4 Contemporary DC DN Lens
- Lens Hood
- Front Lens Cap
- Rear Lens Cap

## 4. SETUP

---

### 4.1 Attaching the Lens to Your Camera

1. Ensure your camera is powered off before attaching or detaching any lens.
2. Remove the rear lens cap from the Sigma 30mm F1.4 DC DN lens and the body cap from your camera.
3. Align the white index mark on the lens barrel with the corresponding index mark on your camera's lens mount.
4. Gently insert the lens into the camera's mount.
5. Rotate the lens clockwise (when viewed from the front) until it clicks into place. This indicates the lens is securely locked.
6. Attach the lens hood by aligning its mark with the mark on the front of the lens and twisting until it locks.

### 4.2 Detaching the Lens from Your Camera

1. Power off your camera.
2. Press and hold the lens release button on your camera body.
3. While holding the button, rotate the lens counter-clockwise until it detaches from the camera body.
4. Immediately attach the rear lens cap to the lens and the body cap to your camera to protect the sensor and lens elements from dust.

## 5. OPERATING INSTRUCTIONS

---

### 5.1 Autofocus (AF) and Manual Focus (MF)

This lens supports both autofocus and manual focus modes. The focus mode is typically controlled via your camera's settings.

- **Autofocus:** When your camera is set to AF mode, the lens will automatically adjust focus. The stepping motor provides quick and quiet focusing.
- **Manual Focus:** When your camera is set to MF mode, you can manually adjust the focus by rotating the focus ring on the lens barrel. The focus ring operates smoothly, allowing for precise adjustments.

### 5.2 Aperture Control

The aperture (F-number) controls the amount of light entering the lens and the depth of field. This lens features a maximum aperture of F1.4.

- Aperture settings are controlled through your camera body. Refer to your camera's instruction manual for specific details on changing aperture.
- A wider aperture (smaller F-number like F1.4) allows more light and creates a shallower depth of field, blurring the background.
- A narrower aperture (larger F-number) allows less light and creates a greater depth of field, keeping more of the scene in focus.

### 5.3 Using the Lens Hood

The included lens hood helps to block extraneous light, reducing flare and ghosting, and also provides physical protection for the front element of the lens.

- Attach the lens hood by aligning the red dot on the hood with the red dot on the front of the lens, then twist clockwise until it locks.
- For storage, the lens hood can be reversed and mounted onto the lens.

## 6. MAINTENANCE AND CARE

- **Cleaning the Lens Surface:** Use a soft, clean microfiber cloth specifically designed for optical lenses. For stubborn smudges, use a small amount of lens cleaning solution applied to the cloth, not directly to the lens.
- **Removing Dust:** Use a blower brush to gently remove dust from the lens elements and body. Avoid wiping dry lens surfaces as this can cause scratches.
- **Storage:** When not in use, store the lens with both front and rear caps attached in a cool, dry place, away from direct sunlight and extreme temperatures. Consider using a dehumidifying cabinet if you live in a humid environment.
- **Avoid Impact:** Protect the lens from drops and impacts, which can damage internal optical elements or the focusing mechanism.
- **Water and Moisture:** This lens is not waterproof. Avoid exposing it to rain, splashes, or high humidity. If it gets wet, wipe it dry immediately with a soft cloth.

## 7. TROUBLESHOOTING

Problem	Possible Cause	Solution
Lens not recognized by camera	Improperly mounted lens; dirty electrical contacts.	Ensure the lens is securely attached and clicked into place. Clean the electrical contacts on both the lens and camera with a clean, dry cloth.
Autofocus is slow or inaccurate	Low light conditions; camera focus settings; dirty lens elements.	Ensure sufficient light for autofocus. Check camera's AF mode and settings. Clean the front and rear lens elements. Switch to manual focus if necessary.
Images appear blurry	Incorrect focus; camera shake; dirty lens.	Verify focus point. Use a faster shutter speed or tripod to prevent camera shake. Clean lens elements.
Lens hood does not attach securely	Misalignment; obstruction.	Ensure the alignment marks on the hood and lens are matched before twisting. Check for any debris preventing proper attachment.

## 8. SPECIFICATIONS

Feature	Detail
Brand	Sigma
Model Number	302965
Compatible Mountings	Sony E
Lens Type	Wide Angle, Prime
Focal Length	30 millimeters
Maximum Aperture	F1.4
Diaphragm Blades	9 (Rounded)

Feature	Detail
Product Dimensions	2.9 x 2.6 x 2.6 inches (73.7 x 66 x 66 mm)
Item Weight	9.3 ounces (265 grams)
Filter Size	52mm
Manufacturer	SIGMA
Date First Available	February 23, 2016



Image 8.1: Technical specifications and dimensions of the Sigma 30mm F1.4 DC DN lens. This image provides a visual representation of the lens's physical measurements and key optical data.

## 9. WARRANTY AND SUPPORT

For information regarding warranty coverage, service, and technical support, please refer to the official Sigma website or contact your regional Sigma distributor. Warranty terms may vary by region and purchase location.

Online Resources:

- [Sigma Global Website](#)
- [Sigma USA Service & Support](#) (if applicable to your region)



© 2023 Sigma Corporation. All rights reserved. Information in this manual is subject to change without notice.

## Related Documents - 302965

	<p><a href="#">Sigma 20-200mm F3.5-6.3 DG Contemporary Lens Correction Profile User Manual for Sony E-mount</a></p> <p>User manual detailing the installation and application of the interim Sigma 20-200mm F3.5-6.3 DG   Contemporary lens correction profile (.lcp file) for Sony E-mount cameras within Adobe Photoshop and Lightroom Classic.</p>
	<p><a href="#">Sigma 24-70mm F2.8 DG DN Lens Instruction Manual</a></p> <p>Comprehensive instruction manual for the Sigma 24-70mm F2.8 DG DN lens, covering safety precautions, component identification, attachment and focusing procedures, zooming, lens hood usage, filter recommendations, flash photography advice, basic care and storage, and detailed technical specifications.</p>
	<p><a href="#">Sigma 100-400mm F5-6.3 DG OS HSM Lens Instruction Manual</a></p> <p>Detailed instructions for using the Sigma 100-400mm F5-6.3 DG OS HSM lens, covering its features, operation, care, and technical specifications. Includes information on Optical Stabilizer (OS), Custom Modes, Tele Converters, and more.</p>
	<p><a href="#">Sigma 24-70mm F2.8 DG DN Lens: User Manual and Specifications</a></p> <p>Comprehensive user manual for the Sigma 24-70mm F2.8 DG DN lens, covering attachment, focusing, zooming, care, and technical specifications. Includes safety precautions and multilingual instructions.</p>
	<p><a href="#">Sigma APO 50-150mm F2.8 EX DC OS HSM Lens Instruction Manual</a></p> <p>This manual provides detailed instructions for the Sigma APO 50-150mm F2.8 EX DC OS HSM lens, covering safety precautions, lens parts, operation (focusing, zooming, OS stabilization), compatibility with camera bodies and accessories like teleconverters and filters, basic care, and technical specifications.</p>
	<p><a href="#">Sigma 135mm F1.4 DG   Art for Sony E-mount Lens Correction Profile User Manual</a></p> <p>User manual for installing and applying the Sigma 135mm F1.4 DG   Art lens correction profile for Sony E-mount in Adobe Photoshop and Lightroom. Includes license agreement and installation instructions for Windows and macOS.</p>

SIGMA

SIGMA GLOBAL VISION



30mm F1.4 DC DN



Un nouvel objectif standard, dans la ligne Contemporary L. L'objectif standard à grande ouverture SIGMA 30mm F1.4 DC DN | Contemporary permet aux passionnés de baltiers hybrides de vivre l'expérience de la photographie à la très grande ouverture F1.4. Ils profiteront des superbes flous de bokeh que seul un objectif avec une telle ouverture peut offrir, et de la qualité qu'on est en droit d'attendre d'un objectif Premium. Grâce aux dernières innovations technologiques de SIGMA, ce nouvel objectif correspond au concept de ligne Contemporary, qui vise au meilleur équilibre entre les divers paramètres.

Les objectifs SIGMA appelés "DC" sont conçus pour être utilisés avec des baltiers équipés de capteurs de taille APS-C. Les objectifs SIGMA appelés "DN" sont conçus pour les baltiers pourvus d'un faible tirage mécanique.

Caractéristiques

Particularités

Compatibilité

9 éléments en 7 groupes

F1.4

67mm

55.9°

0.25 m

844.8mm x 73.2mm

Diaphragme Circulaire

Flanets

1.7

265g

Botiers

Code

EAN

30mm F1.4 DC DN

Micro Quatre Tiers Sony E

302963

0085126302634

302965

0085126302658

Accessoire fourni: Parafocals (LH086-011)

Avertissement: pour éviter un usage incorrect et/ou abusif, il est recommandé de lire attentivement les notes d'usage avant utilisation.

• Les données relatives aux performances optiques sont basées sur des mesures effectuées dans des conditions idéales. Les performances réelles peuvent varier en fonction de la situation d'utilisation. Les données relatives aux performances optiques sont basées sur des mesures effectuées dans des conditions idéales. Les performances réelles peuvent varier en fonction de la situation d'utilisation.

Sigma France S.A.S. Sigma Optics, 10, rue de la République, 92100 Nanterre, France. Tél: 01 41 39 11 11. Site: www.sigmafrance.com

[pdf] Dimension Guide

Télécharger la fiche produit SIGMA 30 1 4 DC DN C SONY SEL Optique fixe Villatech 1000072169

302965 b villatech fr media |||

30mm F1.4 DC DN Un nouvel objectif standard, dans la ligne Contemporary L objectif standard grande ... Circulaire. Rapport de reproduction maximal Poids 64.8mm x

73.3mm 9 lamelles 1:7 265g Code 302963 **302965** EAN 0085126302634

0085126302658 Avertissement: pour assurer un usage correct et sr du produ...

lang:fr **score:25** filesize: 659.94 K page\_count: 2 document date: 2016-04-20

SIGMA

SIGMA GLOBAL VISION



30mm F1.4 DC DN



Un nouvel objectif standard, dans la ligne Contemporary L. L'objectif standard à grande ouverture SIGMA 30mm F1.4 DC DN | Contemporary permet aux passionnés de baltiers hybrides de vivre l'expérience de la photographie à la très grande ouverture F1.4. Ils profiteront des superbes flous de bokeh que seul un objectif avec une telle ouverture peut offrir, et de la qualité qu'on est en droit d'attendre d'un objectif Premium. Grâce aux dernières innovations technologiques de SIGMA, ce nouvel objectif correspond au concept de ligne Contemporary, qui vise au meilleur équilibre entre les divers paramètres.

Les objectifs SIGMA appelés "DC" sont conçus pour être utilisés avec des baltiers équipés de capteurs de taille APS-C. Les objectifs SIGMA appelés "DN" sont conçus pour les baltiers pourvus d'un faible tirage mécanique.

Caractéristiques

Particularités

Compatibilité

9 éléments en 7 groupes

F1.4

67mm

55.9°

0.25 m

844.8mm x 73.2mm

Diaphragme Circulaire

Flanets

1.7

265g

Botiers

Code

EAN

30mm F1.4 DC DN

Micro Quatre Tiers Sony E

302963

0085126302634

302965

0085126302658

Accessoire fourni: Parafocals (LH086-011)

Avertissement: pour éviter un usage incorrect et/ou abusif, il est recommandé de lire attentivement les notes d'usage avant utilisation.

• Les données relatives aux performances optiques sont basées sur des mesures effectuées dans des conditions idéales. Les performances réelles peuvent varier en fonction de la situation d'utilisation. Les données relatives aux performances optiques sont basées sur des mesures effectuées dans des conditions idéales. Les performances réelles peuvent varier en fonction de la situation d'utilisation.

Sigma France S.A.S. Sigma Optics, 10, rue de la République, 92100 Nanterre, France. Tél: 01 41 39 11 11. Site: www.sigmafrance.com

[pdf] Dimension Guide

Télécharger la fiche produit SIGMA 30 1 4 DC DN X Optique fixe Villatech 1000119010 villatech fr media

|||

30mm F1.4 DC DN Un nouvel objectif standard, dans la ligne Contemporary L objectif standard grande ... ,4 DC DN 30mm F1,4 DC DN Botiers Micro Quatre Tiers Sony E

Canon EF-M L-Mount X Mount Code 302963 **302965** 302971 302969 302975 EAN

0085126302634 0085126302658 0085126302719 0085126302696 00851263027...

lang:fr **score:17** filesize: 547.6 K page\_count: 2 document date: 2022-02-08

SIGMA

SIGMA GLOBAL VISION



30mm F1.4 DC DN



Un nouvel objectif standard, dans la ligne Contemporary L. L'objectif standard à grande ouverture SIGMA 30mm F1.4 DC DN | Contemporary permet aux passionnés de baltiers hybrides de vivre l'expérience de la photographie à la très grande ouverture F1.4. Ils profiteront des superbes flous de bokeh que seul un objectif avec une telle ouverture peut offrir, et de la qualité qu'on est en droit d'attendre d'un objectif Premium. Grâce aux dernières innovations technologiques de SIGMA, ce nouvel objectif correspond au concept de ligne Contemporary, qui vise au meilleur équilibre entre les divers paramètres.

Les objectifs SIGMA appelés "DC" sont conçus pour être utilisés avec des baltiers équipés de capteurs de taille APS-C. Les objectifs SIGMA appelés "DN" sont conçus pour les baltiers pourvus d'un faible tirage mécanique.

Caractéristiques

Particularités

Compatibilité

9 éléments en 7 groupes

F1.4

67mm

55.9°

0.25 m

844.8mm x 73.2mm

Diaphragme Circulaire

Flanets

1.7

265g

Botiers

Code

EAN

30mm F1.4 DC DN

Micro Quatre Tiers Sony E

302963

0085126302634

302965

0085126302658

Accessoire fourni: Parafocals (LH086-011)

Avertissement: pour éviter un usage incorrect et/ou abusif, il est recommandé de lire attentivement les notes d'usage avant utilisation.

• Les données relatives aux performances optiques sont basées sur des mesures effectuées dans des conditions idéales. Les performances réelles peuvent varier en fonction de la situation d'utilisation. Les données relatives aux performances optiques sont basées sur des mesures effectuées dans des conditions idéales. Les performances réelles peuvent varier en fonction de la situation d'utilisation.

Sigma France S.A.S. Sigma Optics, 10, rue de la République, 92100 Nanterre, France. Tél: 01 41 39 11 11. Site: www.sigmafrance.com

[pdf] Dimension Guide

0085126302719 f 0 boulanger scene7 is content Boulanger

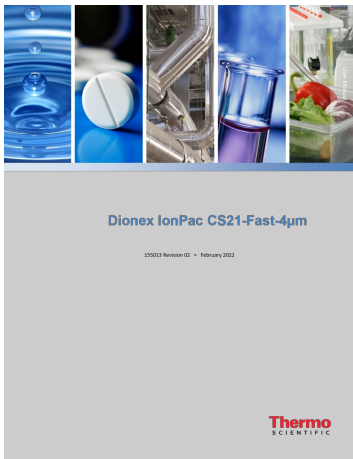
30mm F1.4 DC DN Un nouvel objectif standard, dans la ligne Contemporary L objectif standard grande ... ,4 DC DN 30mm F1,4 DC DN 30mm F1,4 DC DN Botiers Micro

Quatre Tiers Sony E Canon EF-M Code 302963 **302965** 302971 EAN

0085126302634 0085126302658 0085126302719 Avertissement: pour assurer un

usage c...

lang:fr **score:14** filesize: 468.62 K page\_count: 2 document date: 2019-11-25



[\[pdf\]](#) User Manual Specifications

man 155013 ionpac cs21 fast 4um columns man155013 en assets thermofisher TFS Assets CMD manuals |||

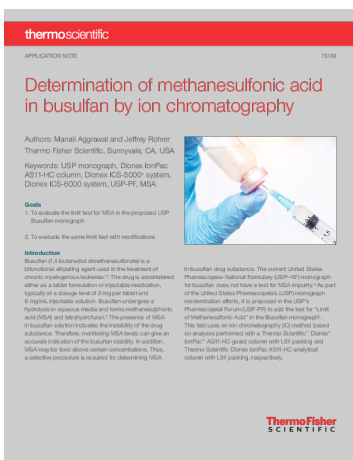
User Manual Dionex IonPac CS21-Fast-4m 155013 Revision 02 February 2022 Product Manual for Dione ... Dionex ICS-5000 and ICS-6000 systems with conductivity detectors running 2 mm applications Item # **302965** , and for Dionex Integrion RFIC systems with conductivity detectors Thermo Scientific 155013... lang:en **score:14** filesize: 1.16 M page\_count: 0 document date: 0000-00-00



[\[pdf\]](#)

an 73853 ic ms pesticides honey an73853 en assets thermofisher TFS Assets CMD Application Notes Note Polar Pesticides in Honey—optimized Chromatographic Workflow Food Analytical Testing Information Thermo Fisher Scientific US |||

APPLICATION NOTE 73853 Polar pesticides in honey Optimized chromatographic workflow Authors: Ralp ... 57 IC PEEK Viper Fitting Kit for Dionex ICS-6000 with Conductivity Detector Microbore 2 mm P/N **302965** Fisherbrand™ Non-sterile Nylon Syringe Filter, 25 mm, 0.2 m P/N 15121499 Fisher Scienti... lang:en **score:9** filesize: 3.19 M page\_count: 0 document date: 0000-00-00



[\[pdf\]](#)

Determination of methanesulfonic acid in busulfan by ion chromatography USP monograph Dionex IonPac AS11 HC column ICS 5000 system 6000 NF MSA an73749 73749 an ic en assets thermofisher TFS Assets CMD Application Notes ||| APPLICATION NOTE 73749 Determination of methanesulfonic acid in busulfan by ion chromatography Au ... mm, P/N 088667 Thermo Scientific™ Dionex™ IC PEEK Viper Fitting Tubing Assembly Kit 2 mm, P/N **302965** Reagents and standards Deionized DI water, Type I reagent grade, 18 Mcm resistance or be... lang:en **score:9** filesize: 276.66 K page\_count: 9 document date: 2020-08-17