

Manuals+

[Q & A](#) | [Deep Search](#) | [Upload](#)

manuals.plus /

› [Pyle](#) /

› [Pyle Portable Bluetooth PA Speaker System PSUFM1043BT Instruction Manual](#)

Pyle PSUFM1043BT

Pyle Portable Bluetooth PA Speaker System

MODEL: PSUFM1043BT

Instruction Manual

1. Introduction

This manual provides essential information for the safe and efficient operation of your Pyle Portable Bluetooth PA Speaker System, model PSUFM1043BT. Please read these instructions thoroughly before use and retain them for future reference.





Figure 1: Pyle Portable Bluetooth PA Speaker System PSUFM1043BT

2. What's in the Box

Verify that all components are present upon unpacking:

- Active Speaker Tower
- Wireless Handheld Microphone
- Power & Audio Connection Cables

WHAT'S IN THE BOX

PA Loudspeaker Karaoke Entertainment System.



Figure 2: Included accessories and main unit

3. Product Features

- **High Power Output:** Equipped with dual 10" subwoofers and dual 3" tweeters, providing 2000-watt peak power / 1000 RMS at 4 ohms for full-range sound.
- **Bluetooth Connectivity:** Compatible with Bluetooth for wireless audio streaming from devices such as smartphones, tablets, and PCs.
- **Multiple Inputs:** Features USB flash drive and SD card reader for MP3 playback, RCA (L/R) and Aux (3.5mm) inputs, and two 1/4" mic/guitar inputs.
- **FM Radio:** Built-in FM radio with auto-scan function.
- **Integrated Party Lights:** Multi-color flashing disco LED lights enhance the visual experience.
- **Portability:** Designed with detachable rolling wheels and a convenient handle for easy transport.



Figure 3: Power output details



4. Setup

4.1. Assembly

Attach the detachable rolling wheels to the bottom of the speaker for enhanced portability. Ensure they are securely fastened.



Figure 5: Speaker with retractable handle and wheels

4.2. Charging

Connect the provided power cable to the speaker's charging port and a power outlet. The charging time is approximately 6-8 hours. Fully charge the battery to preserve its lifespan. The speaker can be used while charging.

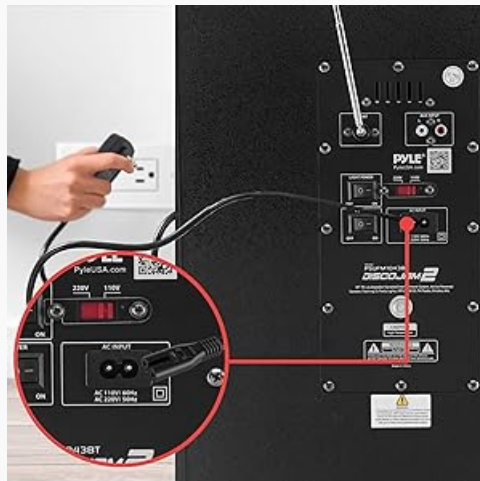


Figure 6: Charging port on the rear control panel

4.3. Power On/Off

Locate the power switch on the rear control panel. Toggle the switch to the 'ON' position to power on the speaker. Toggle to 'OFF' to power off.

5. Operating Instructions

NUMEROUS WAYS TO USE

Connect & Stream Audio from External Devices.



Bluetooth 5.0



Mic In



USB



AUX In



FM Radio

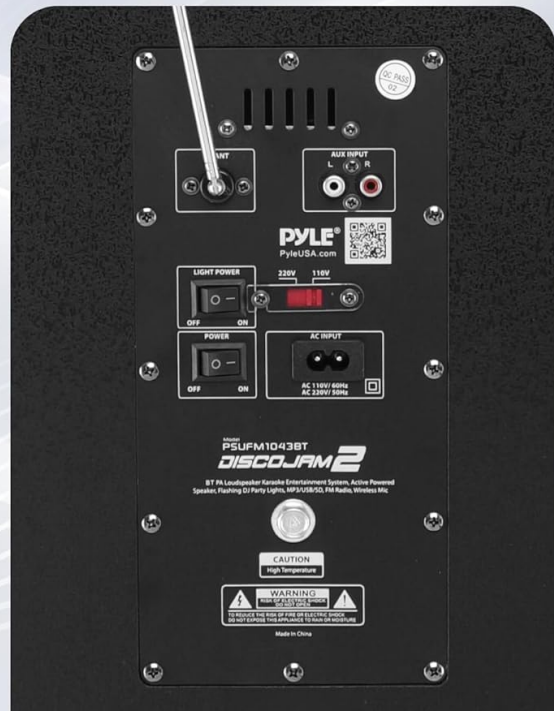


Figure 7: Rear Control Panel

5.1. Bluetooth Pairing

1. Power on the speaker.
2. Ensure the speaker is in Bluetooth mode (indicated on the display). If not, press the 'MODE' button to cycle through input options until 'Bluetooth' is selected.
3. Enable Bluetooth on your mobile device (smartphone, tablet, etc.).
4. Search for available Bluetooth devices and select 'Pyle Speaker' from the list.
5. Once paired, the speaker will emit an audible confirmation, and you can begin streaming audio.

WIRELESS MUSIC STREAMING

Fast pairing and stable connection.

BLUETOOTH
5.0



Figure 8: Bluetooth music streaming

5.2. USB/SD Card Playback

Insert a USB flash drive or SD card containing MP3 audio files into the respective slot on the control panel. The speaker will automatically detect the media and begin playback. Use the playback controls (Play/Pause, Next/Previous Track) to manage your music.

5.3. AUX/RCA Input

Connect an external audio device (e.g., CD player, TV) using the RCA (L/R) or 3.5mm Aux input. Press the 'MODE' button to select the corresponding input.



Figure 9: Various input options

5.4. Microphone Usage (Karaoke)

Plug the wireless microphone into one of the 1/4" MIC IN ports. Adjust the 'MIC VOL' knob to control the microphone's volume. Use the 'ECHO' knob to add an echo effect for karaoke. The system supports two microphones for duets.

INSTANT KARAOKE FUN!

Fun and engaging experience for all age groups.



Figure 10: Karaoke setup

5.5. FM Radio

Press the 'MODE' button to select FM Radio. Use the 'SCAN' button to automatically search and save available radio stations. Use the 'CH-' and 'CH+' buttons to navigate through saved stations.

5.6. Party Lights

The speaker features multi-color LED lights that activate automatically. Refer to the remote control for specific light mode adjustments, if available.

6. Maintenance

- **Cleaning:** Use a soft, dry cloth to clean the speaker's exterior. Avoid abrasive cleaners or solvents.
- **Storage:** Store the speaker in a cool, dry place away from direct sunlight and extreme temperatures when not in use.
- **Battery Care:** Fully charge the battery before long-term storage and recharge every 3-6 months to maintain battery health.

7. Troubleshooting

- **No Power:** Ensure the speaker is charged or connected to a power outlet. Check the power switch is in the 'ON' position.
- **No Sound:** Verify the volume is turned up on both the speaker and the connected audio device. Check that the correct input mode (Bluetooth, AUX, USB/SD) is selected.
- **Bluetooth Pairing Issues:** Ensure the speaker is in Bluetooth mode and within range of your device. Disconnect and re-pair if necessary. Try restarting both devices.
- **Static Noise:** If static noise occurs, especially with AUX/RCA connections, ensure all cables are firmly connected. Disconnect unused cables, particularly when using Bluetooth, to prevent interference.
- **Microphone Not Working:** Check microphone volume and ensure it is properly plugged into the MIC IN port.

8. Specifications

Feature	Specification
Model Number	PSUFM1043BT
Power Output	2000W Peak / 1000 RMS at 4 Ohms
Subwoofer Size	Dual 10 inches
Tweeter Size	Dual 3 inches
Impedance	4 Ohms
Frequency Response	45-20kHz
Connectivity	Bluetooth, USB, SD Card, RCA (L/R), Aux (3.5mm), 1/4" Mic/Guitar Input
Power Source	Battery Powered
Item Weight	21 Pounds
Product Dimensions	16.25 x 15.25 x 40.75 inches
Material	Engineered Wood

9. Warranty & Support

For warranty information or technical support, please refer to the documentation included with your product or visit the official Pyle website. Contact details for customer service are typically provided in the product packaging.