

Manuals+

[Q & A](#) | [Deep Search](#) | [Upload](#)

manuals.plus /

> [iRestore](#) /

> [iRestore Essential - Laser Red Light Therapy for Hair Growth - User Manual](#)

iRestore ID-500

iRestore Essential Laser Hair Growth System User Manual

Model: ID-500

1. INTRODUCTION

The iRestore Essential is an FDA-cleared medical device designed for the treatment of hair loss, hair thinning, and alopecia. It utilizes low-level laser therapy (LLLT) to stimulate hair follicles, promoting natural hair growth for both men and women. This manual provides essential information for the safe and effective use of your iRestore Essential device.



Figure 1: The iRestore Essential Laser Hair Growth System with its remote control. This device is designed for hands-free, at-home hair restoration.

2. SAFETY INFORMATION

Please read all safety information carefully before using the iRestore Essential device. Failure to follow these instructions may result in injury or device malfunction.

General Safety Guidelines:

- The iRestore is protected by a 1-year manufacturer's warranty against defects.
- This device is FDA 510(k) cleared for laser hair regrowth.
- Users must be at least 18 years of age to use this system.
- Refer to the Norwood-Hamilton Scale (approved: Class IIa to V) / Ludwig-Savin Scale (approved: Class I to II) and Fitzpatrick Skin Type Scale (approved: Type I to IV) for compatibility.
- Not indicated for users with severe hair loss.

- iRestore has been clinically tested for males between the ages of 18 and 48 and females between the ages of 18 and 60. While not clinically tested for individuals outside this range, it does not necessarily indicate ineffectiveness.
- If you are taking medications that affect skin sensitivity to light or have a medical condition that makes you extremely sensitive to light, consult your doctor before use.
- This device is FDA-cleared and indicated to treat androgenic alopecia.
- Do not look directly into the laser lights.
- Keep out of reach of children.

3. PRODUCT OVERVIEW AND COMPONENTS

The iRestore Essential system includes the laser helmet and a wired remote control. The helmet contains a combination of medical-grade lasers and LEDs designed to deliver optimal light energy to the scalp.

Key Features:

- **FDA-Cleared & Safety Tested:** Clinically proven technology.
- **Non-Invasive & Drug-Free:** Promotes natural hair growth without chemicals or surgery.
- **Fully Adjustable & Comfortable:** Features medical-grade foam pads for a secure and comfortable fit.
- **Lumitech Technology:** Combines Lasers + LEDs for comprehensive scalp coverage.



FDA-Cleared & Safety Tested

Clinically proven technology & recommended by doctors worldwide.



Non-Invasive & Drug-Free

Grow your hair naturally. No drugs, surgeries, or negative side effects that impact your hormones.



Fully Adjustable & Comfortable

Our devices include medical-grade foam pads that gently embrace your head.

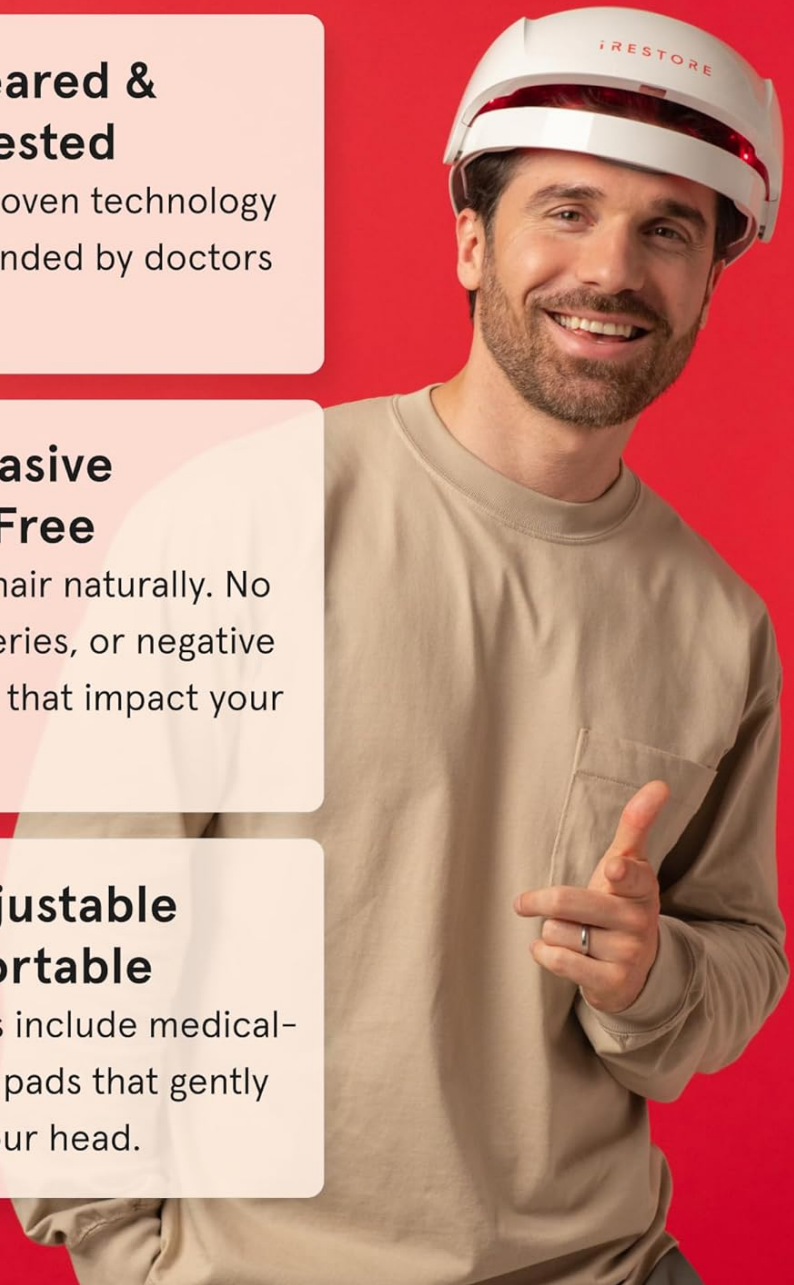
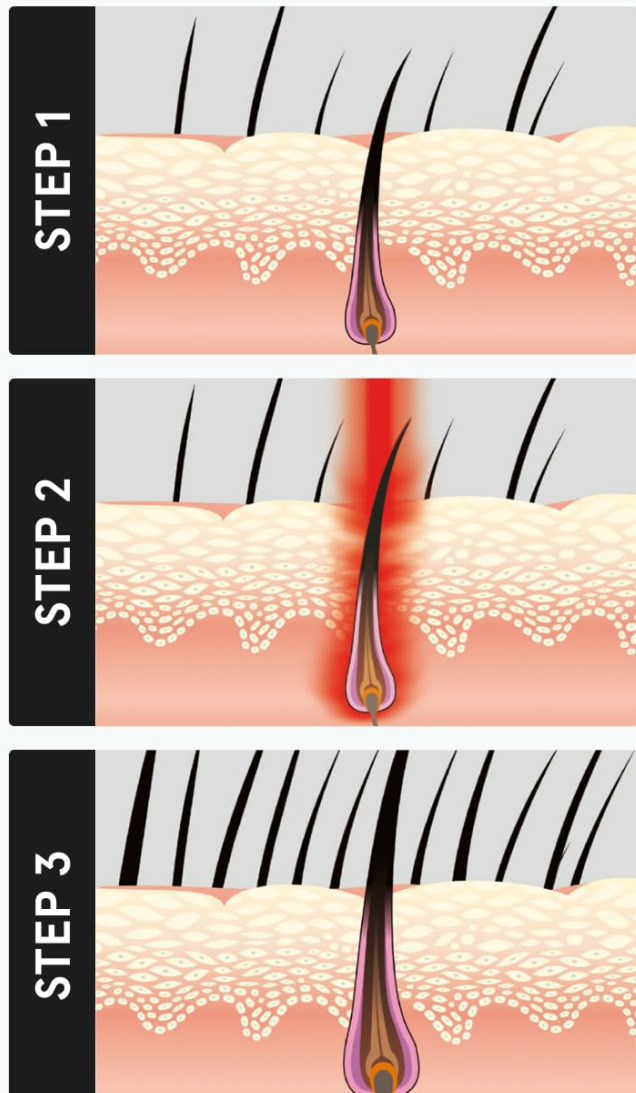


Figure 2: The iRestore Essential utilizes a combination of lasers and LEDs to ensure comprehensive scalp coverage for effective hair follicle stimulation, unlike devices with only partial coverage.

How does laser therapy regrow hair?



Hair miniaturization causes hair to thin and eventually fall off.

LLLT stimulates cell metabolism and fights miniaturization.

Revitalized hair follicles grow back thicker, fuller, and healthier.

Figure 3: This diagram explains the biological process by which low-level laser therapy (LLLT) stimulates hair regrowth by reversing miniaturization and revitalizing hair follicles.

4. SETUP

Before your first treatment session, ensure the device is properly set up.

1. **Unpack:** Carefully remove the iRestore Essential device and its components from the packaging.
2. **Connect Power:** Connect the remote control to the iRestore Essential helmet. Then, connect the power adapter to the remote control and plug it into a standard electrical outlet. The device requires external power for operation.
3. **Fit Adjustment:** Place the helmet on your head. The internal foam pads are designed for comfort and to ensure proper laser and LED placement. Adjust as needed for a snug, comfortable fit.

5. OPERATING INSTRUCTIONS

The iRestore Essential is designed for simple, hands-free operation.

1. **Power On:** Once the device is connected to power and comfortably on your head, press the power button on the remote control. The display will show the default treatment time.
2. **Start Session:** Press the 'Start/Pause' button to begin the treatment session. The red lights inside the helmet will illuminate, and the timer on the remote will begin counting down.
3. **Treatment Duration:** Each session is pre-set for 25 minutes. Use the device every other day for optimal results.
4. **Hands-Free Use:** During the 25-minute session, you are free to engage in other activities such as reading, working, or relaxing.
5. **Session Completion:** The device will automatically turn off once the 25-minute session is complete.
6. **Power Off:** Disconnect the power adapter from the remote control and store the device in a safe place.

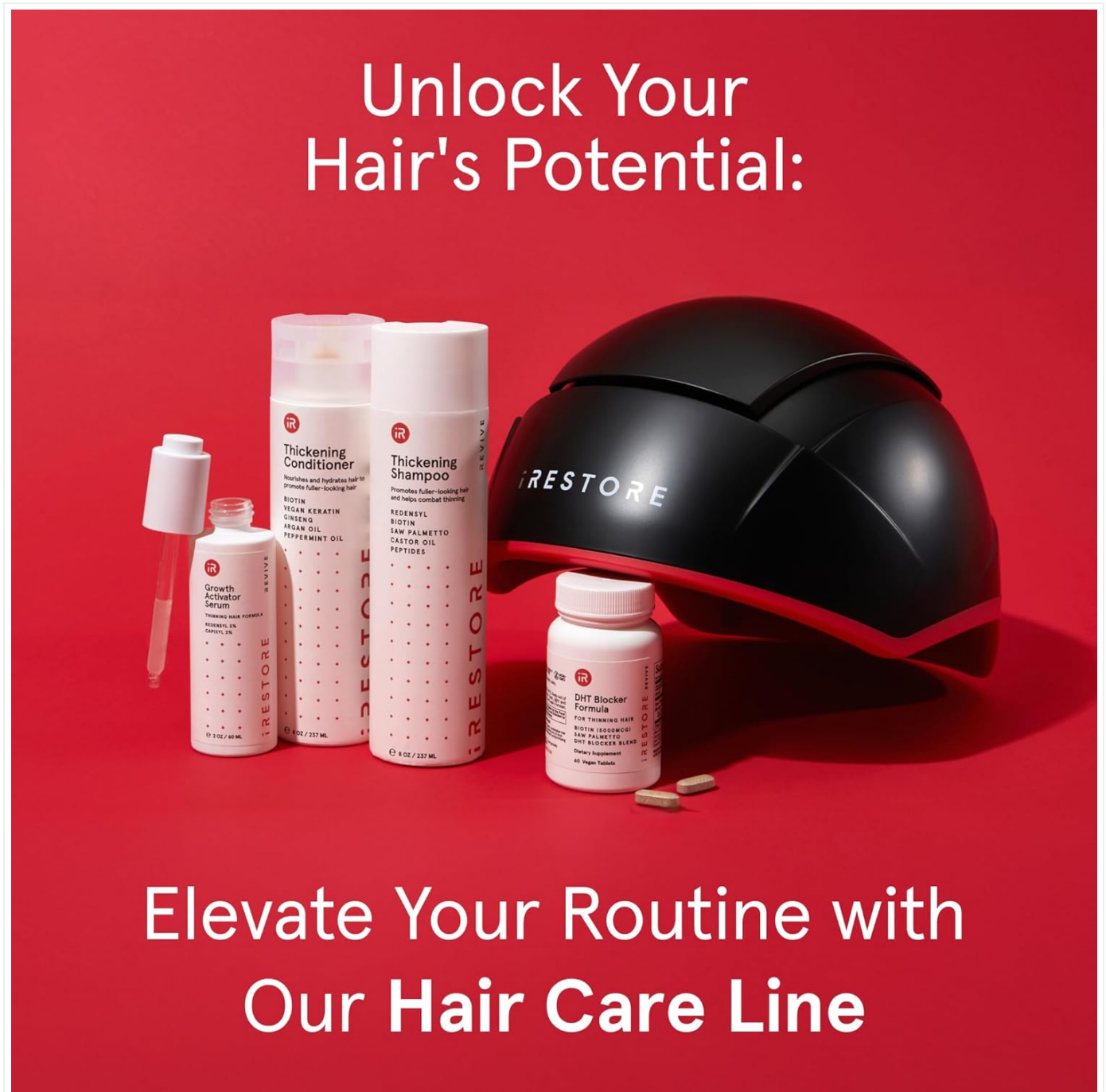
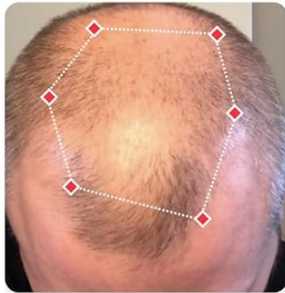


Figure 4: The iRestore Essential features a simple remote control for starting and pausing sessions. Each session lasts 25 minutes and should be performed every other day.

Expected Results Timeline:

Results may vary among individuals, but a general timeline for expected hair growth is as follows:

What To Expect From iRESTORE



0 - 3 Months

No change or increased shedding of weak hairs



6 - 12 Months

Visible results with increased hair growth



3 - 6 Months

Initial results with reduction of hair loss



12 - 24 Months

Most noticeable results with continued use

Figure 5: This timeline illustrates the typical progression of hair growth when using the iRestore Essential device consistently.

- **0-3 Months:** No significant change or potentially increased shedding of weak hairs. This is a normal part of the hair growth cycle.
- **3-6 Months:** Initial results may become visible, with a reduction in hair loss.
- **6-12 Months:** Visible results with increased hair growth and density.
- **12-24 Months:** Most noticeable results with continued use, leading to thicker, fuller, and healthier hair.

6. MAINTENANCE

Proper care and maintenance will ensure the longevity and optimal performance of your iRestore Essential device.

- **Cleaning:** Gently wipe the interior and exterior surfaces of the helmet with a soft, dry, or slightly damp cloth. Do not use harsh chemicals, abrasive cleaners, or immerse the device in water.
- **Storage:** Store the device in a cool, dry place away from direct sunlight and extreme temperatures. Keep it in its original packaging or a protective case when not in use to prevent dust accumulation and damage.

- **Cable Care:** Avoid bending or twisting the power cable excessively. Always grasp the plug, not the cable, when disconnecting from the outlet.

7. TROUBLESHOOTING

If you encounter any issues with your iRestore Essential, refer to the following common troubleshooting steps.

- **Device Not Turning On:**
 - Ensure the power adapter is securely plugged into both the remote control and a working electrical outlet.
 - Verify that the remote control is properly connected to the helmet.
 - Check if the power outlet is functional by plugging in another device.
- **Lights Not Illuminating:**
 - Confirm the device is powered on and a session has been started using the 'Start/Pause' button.
 - If only some lights are off, contact customer support.
- **Remote Control Display Not Working:**
 - Check power connections as described above.
 - If the issue persists, contact customer support.
- **Discomfort During Use:**
 - Adjust the helmet's position and the internal foam pads for a more comfortable fit.
 - Ensure your hair is clean and dry before use.

If these steps do not resolve the issue, please contact iRestore customer support for further assistance.

8. SPECIFICATIONS

Feature	Detail
Model Number	ID-500
Product Dimensions	10.8 x 10 x 7 inches
Item Weight	1.98 Pounds
Power Source	Wired (requires external power adapter)
Batteries	1 Product Specific batteries required (for remote control)
UPC	859690003897
ASIN	B01B29PCUU
Manufacturer	iRestore
Treatment Time	25 minutes per session
Frequency of Use	Every other day

9. WARRANTY AND SUPPORT

Warranty Information:

The iRestore Essential is covered by a **1-year manufacturer's warranty** against defects in materials and workmanship from the date of purchase. This warranty does not cover damage caused by misuse, accident, unauthorized modification, or normal wear and tear. Please retain your proof of purchase for warranty claims.

Customer Support:

For technical assistance, troubleshooting, warranty claims, or any other inquiries regarding your iRestore Essential device, please contact iRestore customer support. Refer to the product packaging or the official iRestore website for the most current contact information.

10. VIDEO RESOURCES

While specific official product videos from the seller were not available in the provided data, you may find helpful instructional videos on the official iRestore website or their authorized channels. These resources often provide visual guides for setup, usage, and maintenance.

