

APS iBoard Running Board Style (IB-FR927A)

APS Running Boards Style Instruction Manual

Model: iBoard Running Board Style (IB-FR927A) | Brand: APS

INTRODUCTION

This manual provides detailed instructions for the installation, operation, and maintenance of your APS Running Boards Style. These running boards are designed to provide a convenient and secure step for easier entry and exit from your Ford Explorer 2011-2019 4-Door. Please read this manual thoroughly before beginning installation or use to ensure proper function and safety.

PRODUCT OVERVIEW

Key Features

- Package includes: (2) iBoard running boards, mounting brackets and hardware kit for an easy DIY install.
- Heavy Duty 6-inch Wide Running Boards with Raised Ends that Act as Mud Guards.
- Made from Aircraft grade 6061-T6 Aluminum, the board and metal ends are welded together for seamless integration.
- Full Length and UV Resistant Grooved High Grip Tread Step Pad for Secure Footing and Anti-slip Protection.
- Easy to install Rocker Panel Mount (Drilling Required), compatible with Ford Explorer 2011-2019 4-Door.

Package Contents

- Pair of Side Steps
- Mounting Brackets Kit
- Instruction Manual (this document)

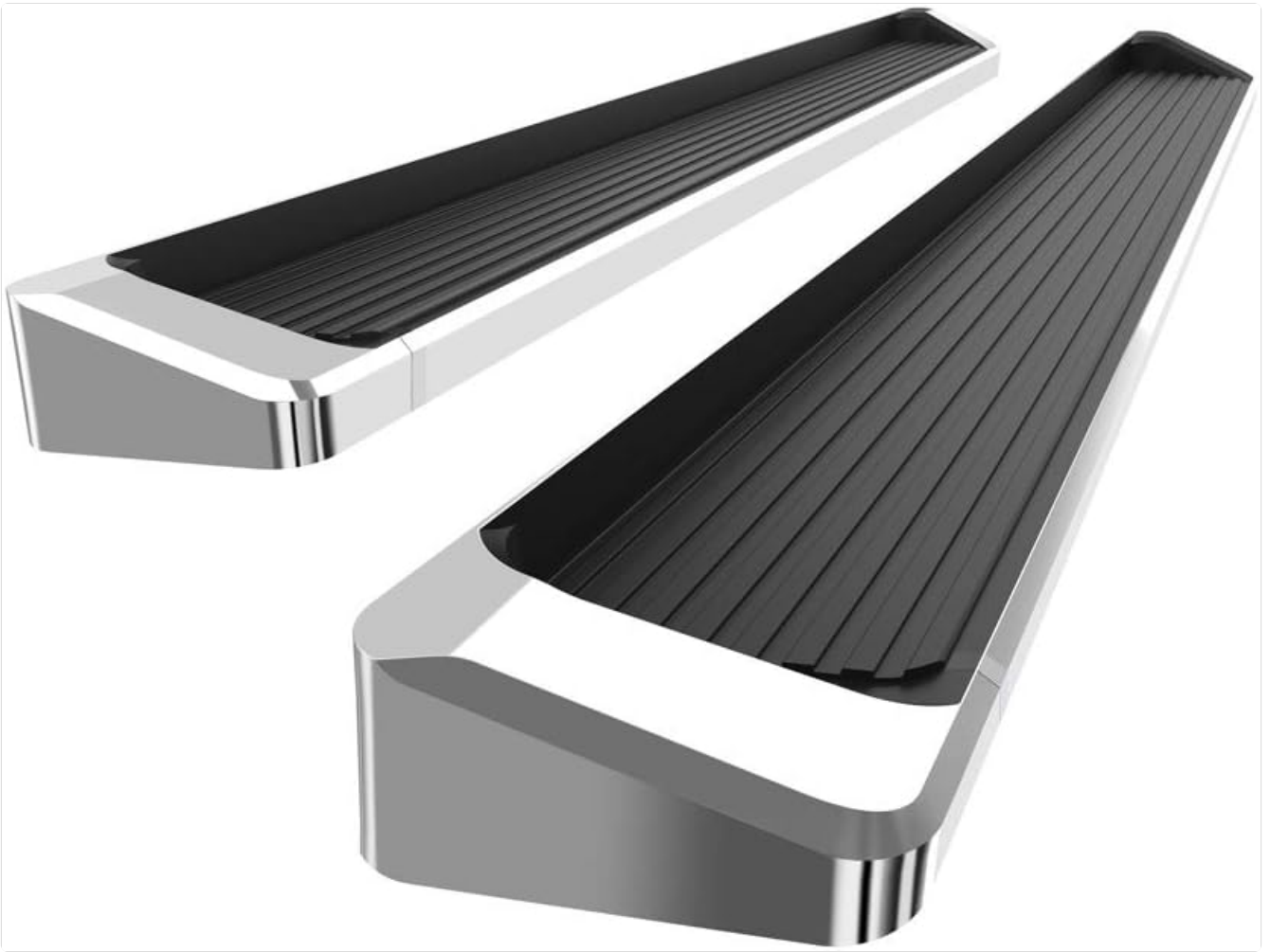


Image: The APS Running Boards, showcasing their sleek design and grooved step pads.

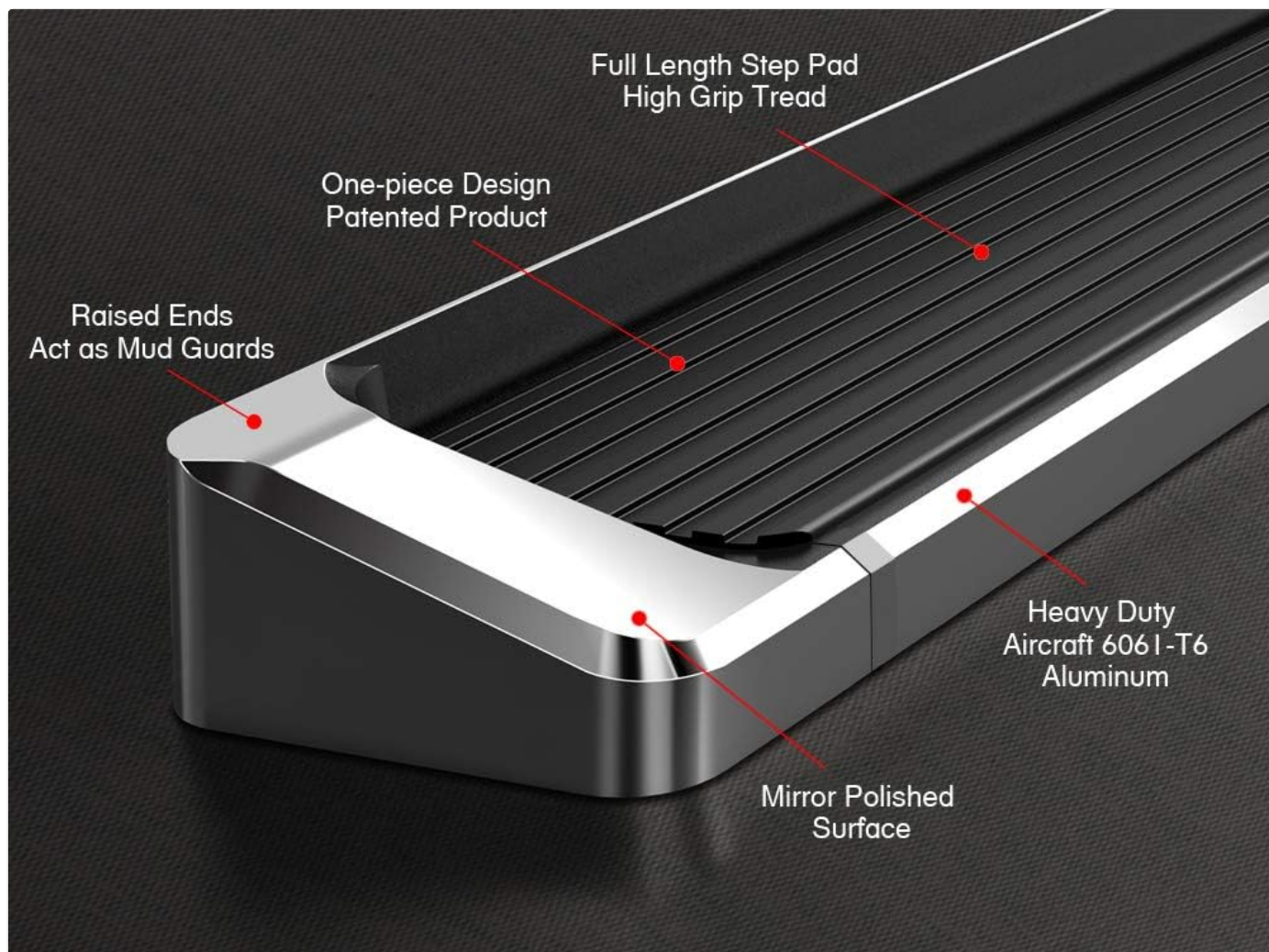


Image: Detailed view of the running board highlighting its key design and material features.

SETUP AND INSTALLATION

Installation of the APS Running Boards requires careful attention and some mechanical aptitude. Drilling is required for proper mounting. For optimal results and safety, professional installation is highly recommended.

An official Installation Manual in PDF format is available for detailed step-by-step instructions. It is strongly advised to consult this document for comprehensive guidance:

[Download Official Installation Manual \(PDF\)](#)

General Installation Steps (Summary)

1. **Preparation:** Unpack all components and verify against the package contents list. Familiarize yourself with all parts and the vehicle's undercarriage.
2. **Bracket Assembly:** Assemble the mounting brackets according to the instructions, but do not fully tighten hardware until the running boards are aligned.
3. **J-Bolt Placement:** Carefully insert J-bolts into the vehicle's frame openings as specified in the detailed manual. Patience is key during this step.
4. **Rocker Panel Access:** Release necessary retainers on the rocker panel to access mounting points.
5. **Bracket Mounting:** Attach the assembled brackets to the vehicle's frame using the provided hardware. For the rear bracket, a pilot hole may need to be drilled after marking the precise location.
6. **Running Board Attachment:** Secure the running boards to the mounted brackets. Adjust alignment as needed before final tightening.
7. **Final Tightening:** Once satisfied with the position and alignment, securely tighten all bolts and nuts. Reattach any released retainers.



6"
Wide

Image: APS Running Boards installed on a red Ford Explorer, demonstrating fitment.



Image: APS Running Boards installed on a white Ford Explorer, showcasing the aesthetic integration.

OPERATING INSTRUCTIONS

The APS Running Boards are designed for simple and intuitive use. Once properly installed, they provide a stable platform for stepping into and out of your vehicle.

- **Stepping On:** Place your foot firmly on the grooved step pad. The anti-slip surface provides secure footing.
- **Weight Limit:** The running boards have a weight limit of 500 pounds. Do not exceed this limit to prevent damage to the boards or vehicle.
- **Entry/Exit:** Use the running board as a stable step to assist in entering or exiting the vehicle, reducing the step height.

MAINTENANCE

Regular maintenance will help preserve the appearance and functionality of your APS Running Boards.

- **Cleaning:** Clean the running boards regularly with mild soap and water. Avoid abrasive cleaners or harsh chemicals that could damage the polished aluminum finish or the step pad.
- **Inspection:** Periodically inspect all mounting hardware for tightness. Vibrations from driving can sometimes loosen bolts over time. Retighten as necessary.
- **Environmental Exposure:** In areas with road salt or harsh weather conditions, more frequent cleaning is recommended to prevent corrosion and maintain the finish.

TROUBLESHOOTING

This section addresses common concerns that may arise during or after installation.

- **Unclear Instructions:** If the provided instructions seem unclear, refer to the official PDF manual for more detailed diagrams and steps. Consider seeking assistance from a professional installer if you are unsure about any part of the process.
- **Running Boards Appear Too Low or Sag:** Ensure all mounting brackets are correctly positioned and fully tightened. Verify that the installation followed the vehicle-specific guidelines. If the issue persists, professional adjustment or re-installation

may be necessary.

- **Corrosion/Damage from Road Salt:** The running boards are made from durable aluminum, but prolonged exposure to road salt without cleaning can lead to issues. Regular rinsing and cleaning, especially after driving in salted conditions, is crucial to prevent material degradation.

SPECIFICATIONS



Image: Dimensions of the APS Running Board.



Image: Cross-section view detailing the protective layers and metallic materials of the running board.

Attribute	Value
Brand	APS
Model	iBoard Running Board Style (IB-FR927A)
Color	Aluminum Silver
Material	Aircraft Grade 6061-T6 Aluminum
Exterior Finish	Polished Finish
Item Dimensions (L x W x H)	71 x 6 x 3.25 inches
Item Weight	34.9 pounds
Weight Limit	500 Pounds

Attribute	Value
Vehicle Service Type	Sport Utility Vehicle (Ford Explorer 2011-2019 4-Door)
UPC	637230855980
Automotive Fit Type	Vehicle Specific Fit
Date First Available	January 25, 2016

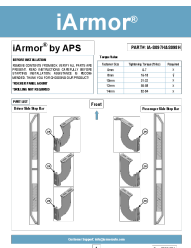
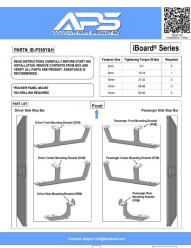
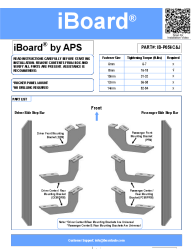
WARRANTY AND SUPPORT

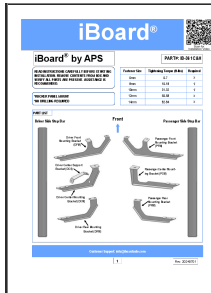
APS is committed to providing quality products. For specific warranty information regarding your running boards, please refer to the documentation included with your purchase or contact APS directly.

- **Spare Part Availability:** EU Spare Part Availability Duration is 5 Years.
- **Contact Support:** For technical assistance, warranty claims, or to inquire about spare parts, please visit the official APS Store on Amazon or contact their customer service department.

[Visit the APS Store on Amazon](#)

Related Documents

	<p>iArmor by APS Running Boards Installation Guide</p> <p>Detailed installation instructions for iArmor by APS running boards (part numbers IA-S097H & IA-S098H), including torque values, parts list, and step-by-step assembly guidance.</p>
	<p>APS iBoard Series Step Bars Installation Guide - Part # IB-P356Y&H</p> <p>Comprehensive installation instructions for APS iBoard Series step bars (Part # IB-P356Y&H). This guide includes a detailed parts list, hardware specifications, fastener torque settings, and step-by-step procedures for mounting the step bars to your vehicle.</p>
	<p>iBoard Running Boards Installation Guide - APS</p> <p>Step-by-step instructions for installing iBoard running boards (Part # IB-P056C&J) by APS. Includes hardware lists, torque specifications, and detailed diagrams.</p>



[iBoard® Installation Guide for APS Step Bars \(Model IB-361C&H\)](#)

Comprehensive installation guide for APS iBoard® step bars (Model IB-361C&H). Learn how to safely and correctly install your new iBoard® step bars with detailed instructions, part lists, and hardware specifications.