

Remington S7740

Remington S7740 Triple Infusion Hair Straightener Instruction Manual

1. PRODUCT OVERVIEW

The Remington S7740 Triple Infusion Hair Straightener is designed to provide smooth, shiny hair with reduced frizz. Its unique ceramic plates are infused with Keratin, Argan Oil, and Macadamia Oil, which are transferred to your hair during styling.

- **Triple Infusion Plates:** Ceramic plates infused with Keratin, Argan Oil, and Macadamia Oil for enhanced shine and reduced frizz.
- **1-Inch Floating Plates:** Extra-long plates ensure constant contact with hair for efficient, single-pass straightening.
- **High Heat Performance:** Reaches up to 450°F (232°C) for professional styling results.
- **Rapid Heat-Up:** Heats up in just 15 seconds for quick styling.
- **Digital Controls:** Easy-to-use digital controls with a backlit LCD display for precise temperature management.
- **Swivel Cord:** A 360° swivel cord provides flexibility and comfort during use.
- **Auto Shut-Off:** Automatically turns off after 60 minutes of inactivity for safety.
- **Heat Protective Pouch:** Included for convenient storage and travel.



Figure 1: The Remington S7740 Triple Infusion Hair Straightener in its closed position, showcasing its sleek design and digital display.

2. SETUP

1. **Unpack:** Carefully remove the straightener and all accessories from the packaging.

2. **Inspect:** Check the appliance for any signs of damage. Do not use if damaged.
3. **Placement:** Ensure the straightener is placed on a heat-resistant, flat surface during use.
4. **Plug In:** Connect the power cord to a suitable electrical outlet.



Figure 2: Side view of the straightener, illustrating the power cord connection and overall length.

3. OPERATING INSTRUCTIONS

Follow these steps for optimal styling results:

1. **Preparation:** Ensure hair is clean, dry, and tangle-free. Apply a heat protectant spray if desired.
2. **Power On:** Press and hold the power button () to turn on the straightener. The LCD display will illuminate.
3. **Select Temperature:** Use the '+' and '-' buttons to adjust the temperature. The recommended starting temperature is lower for fine hair and higher for thick or coarse hair. The maximum temperature is 450°F (232°C).
4. **Heat-Up:** Allow 15 seconds for the straightener to reach the selected temperature. The display will stop flashing when ready.
5. **Section Hair:** Divide your hair into small, manageable sections (approximately 1-inch wide).
6. **Straighten:** Place a section of hair between the plates, close the plates firmly, and glide the straightener slowly and evenly from roots to ends. For best results, use a single pass per section.
7. **Repeat:** Continue with remaining sections until desired style is achieved.
8. **Power Off:** After use, press and hold the power button () to turn off the straightener. Unplug the appliance from the electrical outlet.



Figure 3: Detailed view of the digital controls, including the power button and temperature adjustment buttons, along with the illuminated LCD display.



Figure 4: Close-up of the 1-inch ceramic plates, highlighting their smooth surface and floating design for optimal hair contact.

4. MAINTENANCE

Proper maintenance ensures the longevity and performance of your straightener.

- **Cleaning:** Ensure the appliance is unplugged and completely cool before cleaning. Wipe the plates and exterior with a soft, damp cloth. Do not use abrasive cleaners or solvents.
- **Storage:** Store the straightener in a cool, dry place. Use the provided heat protective pouch for safe storage and travel. Do not wrap the cord around the appliance, as this can damage the cord.

5. TROUBLESHOOTING

If you encounter issues with your Remington S7740, refer to the following common solutions:

Problem	Possible Cause	Solution
Straightener does not turn on or heat up.	Not plugged in correctly, power outlet issue, or internal fault.	Ensure the power cord is securely plugged into a working electrical outlet. Check the power button. If the issue persists, contact customer support.
Uneven heating or poor styling results.	Hair sections too large, incorrect temperature setting, or dirty plates.	Ensure hair is divided into small, manageable sections. Adjust temperature as needed for your hair type. Clean the plates when cool.
Hair snagging during use.	Hair not properly detangled, or plates not fully closed.	Ensure hair is completely detangled before straightening. Apply even pressure to close the plates firmly.

6. SPECIFICATIONS

- **Model:** S7740
- **Brand:** Remington
- **Plate Material:** Ceramic with Keratin, Argan Oil, Macadamia Oil infusion
- **Plate Size:** 1 inch
- **Color:** Burgundy (Rosado)
- **Power Source:** Corded Electric
- **Maximum Temperature:** 450°F (232°C)
- **Heat-Up Time:** 15 seconds
- **Auto Shut-Off:** 60 minutes
- **ASIN:** B01B1PWC2Q

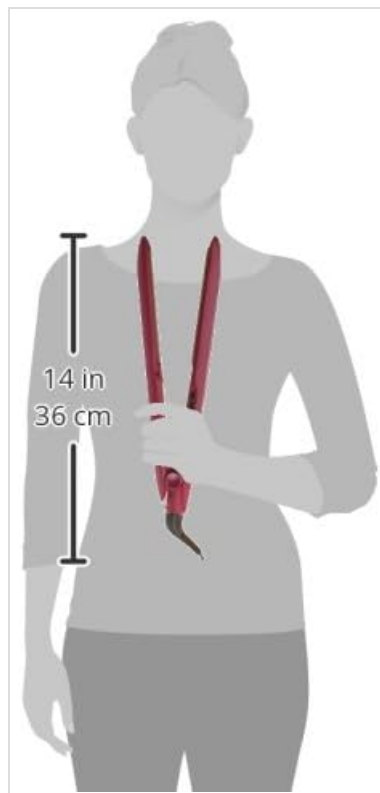


Figure 5: A visual representation of the straightener's dimensions, indicating a length of approximately 14 inches (36 cm).

7. SAFETY INFORMATION

WARNING: To reduce the risk of electric shock, burns, fire, or injury:

- Always unplug the appliance immediately after use.
- Do not use while bathing or in a shower.
- Do not place or store the appliance where it can fall or be pulled into a tub or sink.
- Do not place in or drop into water or other liquid.
- If an appliance falls into water, unplug it immediately. Do not reach into the water.
- Keep away from water.
- This appliance is hot when in use. Do not let eyes or bare skin touch heated surfaces.
- Never block the air openings of the appliance or place it on a soft surface, such as a bed or couch, where the air openings may be blocked. Keep the air openings free of lint, hair, and the like.
- Never use while sleeping.
- Never drop or insert any object into any opening.
- Do not use outdoors or operate where aerosol (spray) products are being used or where oxygen is being administered.
- Do not use an extension cord with this appliance.
- The appliance will automatically shut off after 60 minutes of inactivity. However, do not rely solely on the auto shut-off feature. Always manually turn off and unplug the device after use to prevent overheating and fire risk.

8. WARRANTY AND SUPPORT

This product is covered by a manufacturer's warranty. For specific warranty details, please refer to the documentation included with your purchase or visit the official Remington website. For technical support, troubleshooting assistance, or to inquire about replacement parts, please contact Remington customer service.

Online Support: www.remingtonproducts.com