

Philips SH30/50

Philips Shaver 3000 Series Shaving Heads Instruction Manual

Model: SH30/50

INTRODUCTION

This instruction manual provides essential information for the proper installation, maintenance, and safe use of your Philips Shaver 3000 Series SH30/50 replacement shaving heads. These shaving heads are designed to restore your shaver's performance to optimal levels, ensuring a comfortable and efficient shave.

For best results, it is recommended to replace your shaving heads every two years, as they shave millions of hairs from your face within this period, which can affect their sharpness and efficiency.

SAFETY INFORMATION

Please read all safety warnings carefully before using the product.

- **For external use only:** These shaving heads are designed for use with Philips electric shavers on facial hair. Do not use for any other purpose or on other body parts.
- Keep out of reach of children.
- Ensure the shaver is turned off and unplugged before attempting to replace the shaving heads.
- Handle the blades with care to avoid injury.

PRODUCT OVERVIEW



Image: Three Philips SH30/50 replacement shaving heads shown with their retail box, indicating compatibility with Series 1000 and 3000 shavers.



Image: A detailed close-up of a single Philips ComfortCut shaving head, highlighting its intricate blade design.

The Philips SH30/50 replacement shaving heads feature the durable ComfortCut blade system. These self-sharpening blades are designed to provide a consistently close and comfortable shave. The rounded profile of the shaving heads helps to prevent nicks and cuts, ensuring a smooth experience.

Your shaver may include a replacement reminder indicator that signals when it's time to change the shaving heads for continued optimal performance.



Image: Two Philips electric shavers, a Series 3000 model (left) and a Series 1000 model (right), demonstrating the types of shavers compatible with the SH30/50 replacement heads.

INSTALLATION: REPLACING SHAVING HEADS

Follow these steps to replace the shaving heads on your Philips shaver. Ensure the shaver is turned off and unplugged before proceeding.

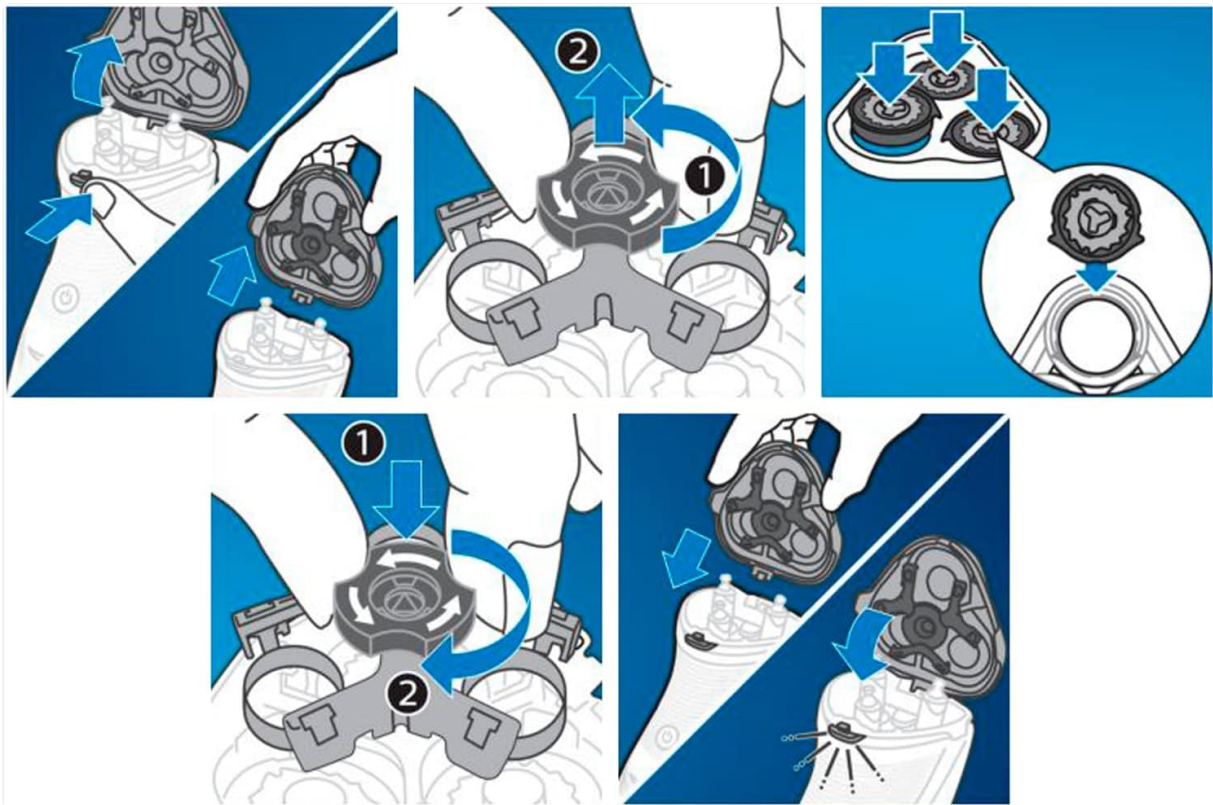


Image: A visual guide illustrating the five steps to remove old shaving heads and install new ones on a Philips electric shaver.

1. **Remove the old shaving head unit:** Gently pull the shaving head unit upwards and away from the shaver body. It should detach with a slight pull.
2. **Remove the retaining ring:** Twist the retaining ring counter-clockwise to unlock and remove it from the shaving head unit.
3. **Remove old blades and combs:** Carefully lift out the old blades and combs from the shaving head unit. Dispose of them responsibly.
4. **Insert new blades and combs:** Place the new ComfortCut blades and combs into the shaving head unit. Ensure they are seated correctly.
5. **Reattach the retaining ring:** Place the retaining ring back onto the shaving head unit and twist it clockwise to lock it securely in place.
6. **Attach the new shaving head unit:** Align the new shaving head unit with the shaver body and press it down until it clicks into place.
7. **Test the shaver:** Turn on the shaver briefly to ensure the new heads are functioning correctly.

MAINTENANCE

Regular cleaning of your shaver and its components is essential for maintaining optimal performance and hygiene.

- After each shave, rinse the shaving heads under warm running water to remove hair clippings and debris.
- Periodically, remove the shaving head unit and clean the inside of the shaver thoroughly with the provided cleaning brush or by rinsing under water if your shaver is waterproof.
- Allow all parts to air dry completely before reassembling the shaver.



Image: An icon depicting a shaving head with arrows indicating a recommended replacement cycle of 2 years for optimal performance.

SPECIFICATIONS

Model Number	SH30/50
Brand	Philips
Product Dimensions	4.4 x 4.4 x 0.6 cm (per head)
Item Weight	30 g (total for 3 heads)
Number of Blades	3 (per head)
Recommended Use	Face shaving
Skin Type	All skin types
Country of Origin	Netherlands

WARRANTY AND SUPPORT

For warranty information, technical support, or any questions regarding your Philips SH30/50 replacement shaving heads, please visit the official Philips support website or contact Philips customer service in your region. Keep your proof of purchase for warranty claims.

You can find more information and support resources on the [Philips Store on Amazon](#).