



[Manuals.plus](#) /

› [Ariens](#) /

› Ariens Blade Tray 01582200 Instruction Manual

Ariens 01582200

Ariens Blade Tray 01582200 Instruction Manual

Model: 01582200

[Introduction](#)

[Safety Information](#)

[Installation](#)

[Maintenance](#)

[Troubleshooting](#)

[Specifications](#)

[Warranty & Support](#)

1. INTRODUCTION

This manual provides essential instructions for the proper installation, maintenance, and troubleshooting of your Ariens Blade Tray, model 01582200. This component is designed to ensure the correct positioning and secure attachment of the mower blade on compatible Ariens lawn tractors. Please read this manual thoroughly before attempting any installation or maintenance procedures.

1.1. Compatible Models

The Ariens Blade Tray 01582200 is compatible with the following Ariens lawn tractor models:

- 936032 (000101) YT1742 42" Lawn Tractor
- 936033 (000101) YT1542 42" Lawn Tractor
- 936035 (000101) YT1742 42" Lawn Tractor
- 936315 (000101) YT1842H Hydro 42" Lawn Tractor
- 936319 (000101) YT1742H Hydro 42" Lawn Tractor
- 936320 (000101) YT1742H Hydro 42" Lawn Tractor
- 936330 (000101) YT1742 Hydro 42" Lawn Tractor

2. SAFETY INFORMATION

Always prioritize safety when working with lawn care equipment. Failure to follow safety instructions can

result in serious injury or damage to equipment.

- **Disconnect Spark Plug:** Before performing any maintenance or installation, always disconnect the spark plug wire to prevent accidental engine starting.
- **Wear Protective Gear:** Use appropriate personal protective equipment (PPE), including safety glasses and heavy-duty gloves, to protect against sharp edges and debris.
- **Secure the Equipment:** Ensure the lawn tractor is on a flat, stable surface and properly supported to prevent it from rolling or falling during work.
- **Use Correct Tools:** Utilize the recommended tools for each task to avoid damaging components or causing injury.
- **Refer to Tractor Manual:** Consult your specific lawn tractor's owner's manual for additional safety precautions and detailed instructions related to deck and blade removal/installation.

3. INSTALLATION

This section outlines the general procedure for installing the Ariens Blade Tray. Specific steps may vary slightly depending on your lawn tractor model. Always refer to your tractor's owner's manual for detailed instructions on removing and installing mower blades and deck components.

3.1. Tools Required

- Socket wrench set
- Torque wrench
- Blade removal tool or wood block (for safety)
- Safety glasses
- Heavy-duty gloves

3.2. Installation Steps

1. **Prepare the Tractor:** Park the lawn tractor on a level surface, engage the parking brake, and disengage the power take-off (PTO). Turn off the engine and remove the ignition key. Disconnect the spark plug wire to prevent accidental starting.
2. **Access the Mower Deck:** Carefully raise the front of the tractor or remove the mower deck according to your tractor's owner's manual to gain access to the underside of the deck and the blade assembly.
3. **Remove Old Blade Tray (if applicable):** If replacing an existing blade tray, use a socket wrench to loosen and remove the blade bolt. Secure the blade with a blade removal tool or a block of wood to prevent it from turning while loosening the bolt. Remove the old blade, blade tray, and any washers.
4. **Inspect Components:** Inspect the blade, blade bolt, and any washers for wear or damage. Replace any worn components. Ensure the spindle shaft is clean and free of debris.
5. **Position New Blade Tray:** Place the new Ariens Blade Tray 01582200 onto the spindle shaft. Ensure it seats correctly and aligns with any indexing features on the spindle.
6. **Install Blade:** Position the mower blade onto the blade tray, ensuring the cutting edge faces the correct direction (usually indicated by an arrow on the blade or deck). The blade tray's design helps align the blade properly.
7. **Secure Blade Bolt:** Reinstall the blade bolt and any washers. Hand-tighten the bolt.
8. **Torque Blade Bolt:** Secure the blade with a blade removal tool or wood block. Use a torque wrench to tighten the blade bolt to the specification provided in your lawn tractor's owner's manual. Proper

torque is critical for safety and performance.

9. **Reassemble and Test:** Reattach the mower deck (if removed) and reconnect the spark plug wire. Perform a visual inspection to ensure all components are correctly installed and secured. Test the mower in a safe, open area.

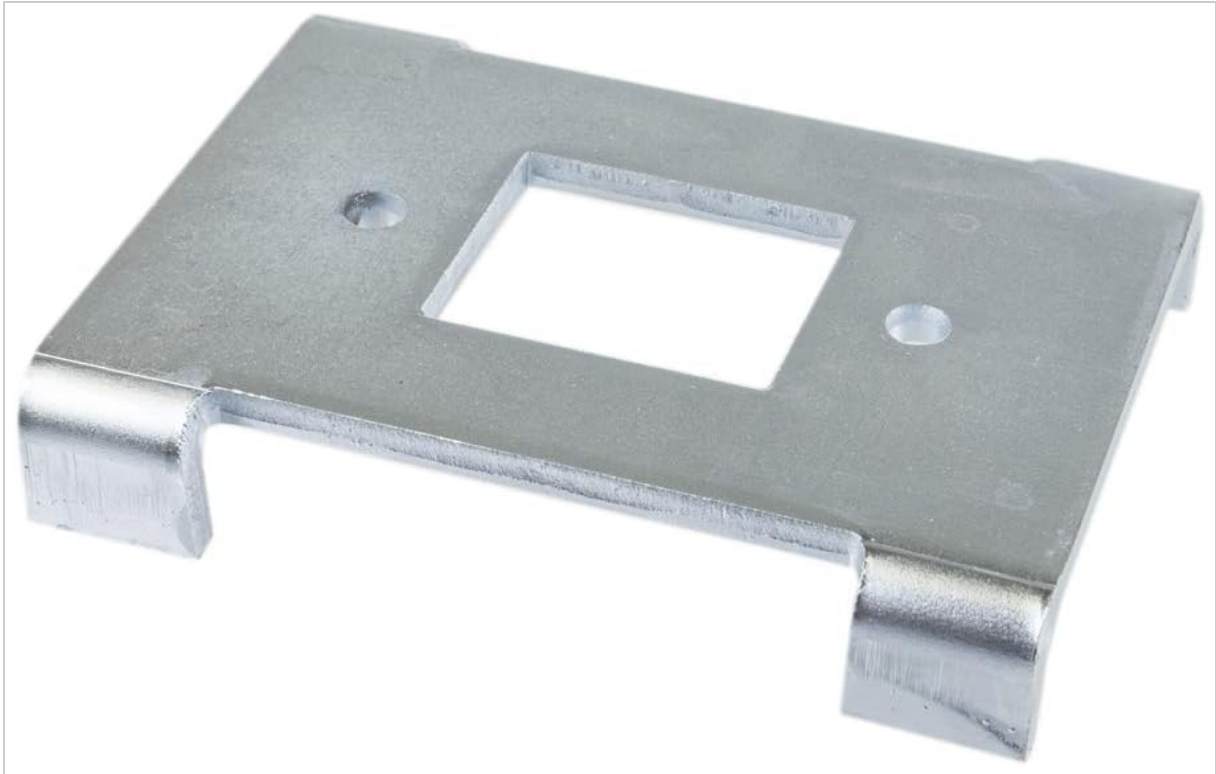


Image showing the Ariens Blade Tray, model 01582200. This is a galvanized metal component with a central square opening and two circular bolt holes, designed to secure the blade on compatible Ariens lawn tractors.

4. OPERATING CONSIDERATIONS

The blade tray itself is a static component and does not have operational controls. Its function is to correctly position and secure the mower blade. Proper installation is key to safe and effective operation of your mower deck.

- **Balanced Blade:** Ensure the mower blade is balanced after installation. An unbalanced blade can cause excessive vibration, leading to premature wear of the blade tray, spindle, and other deck components, as well as an uneven cut.
- **Correct Torque:** Always tighten the blade bolt to the manufacturer's specified torque. Under-tightening can lead to the blade loosening, while over-tightening can damage the bolt or spindle.
- **Regular Inspection:** Before each use, visually inspect the blade and blade tray area for any signs of looseness, damage, or wear.

5. MAINTENANCE

Regular inspection and maintenance of the blade tray and surrounding components will extend the life of your mower deck and ensure safe operation.

- **Visual Inspection:** Periodically inspect the blade tray for signs of wear, cracks, bending, or corrosion. Pay close attention to the areas around the bolt holes and the central opening.
- **Cleaning:** After each use, clean grass clippings and debris from the underside of the mower deck, including the blade tray area. Built-up debris can cause imbalance and accelerate wear.

- **Blade Replacement:** When replacing mower blades, always inspect the blade tray. If the blade tray shows significant wear or damage, it should be replaced along with the blade.
- **Bolt Torque Check:** Occasionally recheck the torque of the blade bolt, especially after the first few hours of operation following a blade or blade tray replacement.

6. TROUBLESHOOTING

If you experience issues with your mower deck, the blade tray might be a contributing factor. Here are some common problems and potential solutions:

Problem	Possible Cause	Solution
Excessive vibration from mower deck	<ul style="list-style-type: none"> • Loose blade bolt • Damaged or bent blade tray • Unbalanced or bent blade 	<ul style="list-style-type: none"> • Check and re-torque blade bolt • Inspect and replace blade tray if damaged • Inspect and replace or balance blade
Uneven cut	<ul style="list-style-type: none"> • Improperly installed blade tray or blade • Bent blade tray 	<ul style="list-style-type: none"> • Ensure blade tray and blade are seated correctly • Inspect and replace blade tray if bent
Blade comes loose during operation	<ul style="list-style-type: none"> • Blade bolt not torqued correctly • Worn blade bolt or threads • Damaged blade tray 	<ul style="list-style-type: none"> • Re-torque blade bolt to specifications • Replace blade bolt • Inspect and replace blade tray if damaged

7. SPECIFICATIONS

Feature	Detail
Model Number	01582200
Brand	Ariens
Product Dimensions	10 x 6 x 1 inches
Item Weight	8 ounces
Material	Galvanized Metal (typical for such components)
Compatibility	Specific Ariens YT1742, YT1542, YT1842H Lawn Tractors

8. WARRANTY & SUPPORT

This Ariens Blade Tray 01582200 is manufactured to high-quality standards. For specific warranty

information, please refer to the documentation provided with your original Ariens lawn tractor or contact Ariens customer support directly. Warranty terms typically cover defects in materials and workmanship under normal use.

8.1. Customer Support

For technical assistance, parts inquiries, or warranty claims, please contact Ariens customer support through their official website or the contact information provided in your main equipment manual. When contacting support, please have your product model number (01582200) and your lawn tractor's model and serial numbers readily available.