

Manuals+

[Q & A](#) | [Deep Search](#) | [Upload](#)

[manuals.plus](#) /

› [TacPower](#) /

› [TacPower Cook's Essentials Bread Machine Kneading Paddle XBM038 User Manual](#)

TacPower XBM038

TacPower Cook's Essentials Bread Machine Kneading Paddle XBM038 User Manual

INTRODUCTION

This manual provides essential instructions for the proper installation, operation, and maintenance of your TacPower Cook's Essentials Bread Machine Kneading Paddle, model XBM038. Please read this guide thoroughly before use to ensure optimal performance and longevity of the product. This paddle is designed as a replacement part for compatible Cook's Essentials bread machines, specifically model XBM036.

PRODUCT OVERVIEW

The kneading paddle is a crucial component of your bread machine, responsible for mixing and kneading dough ingredients. This replacement paddle features a non-stick surface for easy cleaning and efficient dough processing.

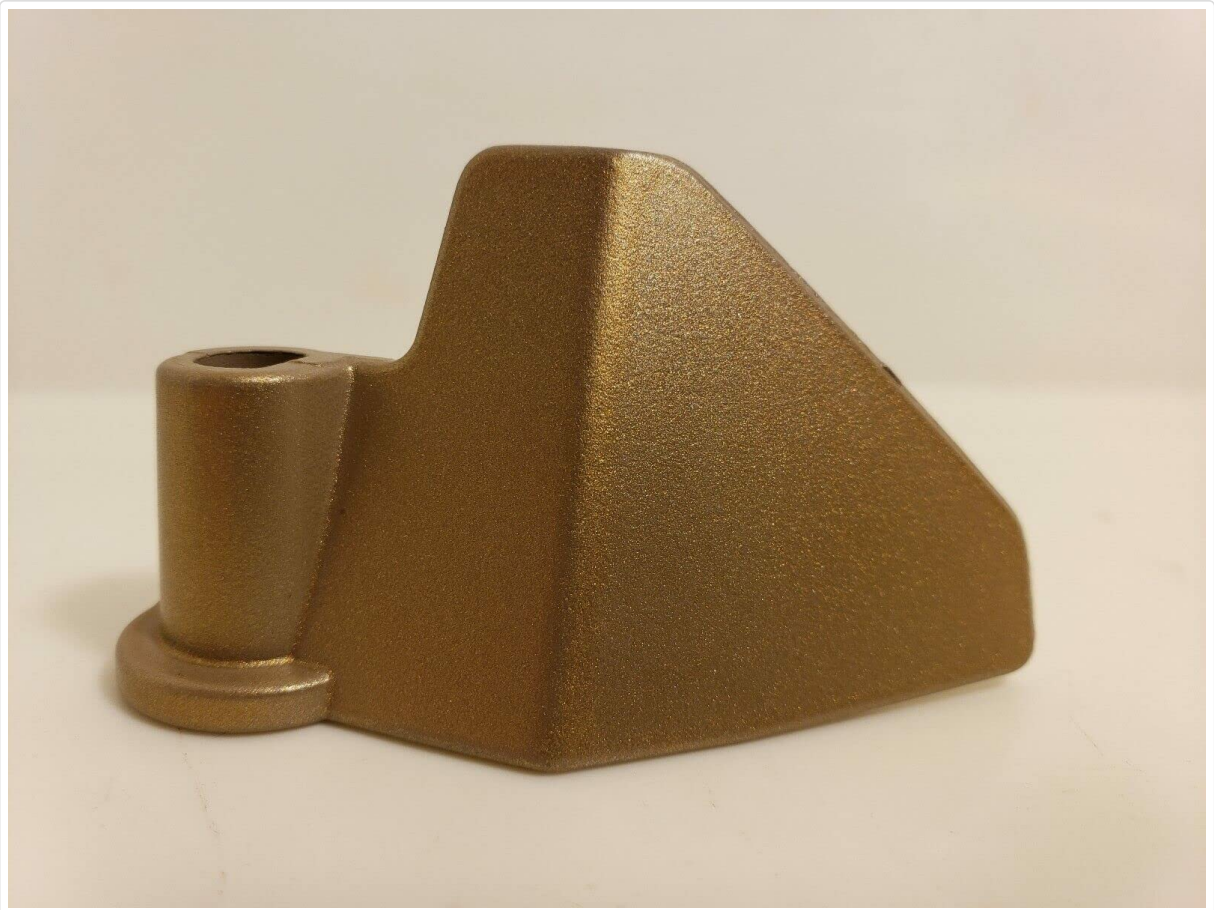


Image 1: Side view of the TacPower Cook's Essentials Bread Machine Kneading Paddle. This image shows the paddle's overall shape and the shaft connection point.



Image 2: Angled view of the TacPower Cook's Essentials Bread Machine Kneading Paddle. This perspective highlights the non-stick coating and the paddle's design for effective dough mixing.



Image 3: Top-down view of the TacPower Cook's Essentials Bread Machine Kneading Paddle. This view clearly shows the circular base where the paddle attaches to the bread machine's drive shaft.

COMPATIBILITY

This kneading paddle (model XBM038) is specifically designed for use with Cook's Essentials Bread Machine model XBM036. Verify your bread machine's model number before installation to ensure proper fit and function.

INSTALLATION (SETUP)

1. **Unplug the Bread Machine:** Always ensure the bread machine is unplugged from the power outlet before handling any internal components.
2. **Remove Bread Pan:** Carefully remove the bread pan from the bread machine.
3. **Remove Old Paddle (if applicable):** If replacing an existing paddle, gently pull the old paddle upwards from the drive shaft inside the bread pan. If it is stuck, try twisting it slightly.
4. **Install New Paddle:** Align the new TacPower XBM038 kneading paddle with the drive shaft at the bottom of the bread pan. Push it down firmly until it is securely seated. Ensure it can rotate freely.
5. **Reinsert Bread Pan:** Place the bread pan back into the bread machine, ensuring it is locked into position according to your bread machine's instructions.

OPERATION

Once the kneading paddle is correctly installed, the bread machine can be operated as usual. The paddle will automatically engage during the mixing and kneading cycles of your selected bread program. Ensure

ingredients are added around the paddle to facilitate proper mixing.

CLEANING AND MAINTENANCE

Regular cleaning of the kneading paddle is essential for hygiene and to prevent dough residue buildup.

- **After Each Use:** After the bread has cooled and been removed from the pan, carefully remove the kneading paddle. It may be embedded in the bottom of the loaf or stuck to the drive shaft.
- **Washing:** Wash the paddle by hand using warm, soapy water and a soft sponge. The non-stick coating should be handled gently to avoid scratching.
- **Drying:** Dry the paddle thoroughly before storing or reinserting it into the bread pan.
- **Avoid Abrasives:** Do not use abrasive cleaners, scouring pads, or metal utensils on the paddle, as this can damage the non-stick surface.

TROUBLESHOOTING

Problem	Possible Cause	Solution
Paddle not kneading dough	Paddle not properly seated on drive shaft.	Remove bread pan and ensure paddle is pushed down firmly onto the drive shaft.
Dough sticking to paddle excessively	Non-stick coating damaged or worn.	Ensure proper cleaning methods are used. If coating is significantly damaged, consider replacing the paddle.
Paddle difficult to remove after baking	Dough residue baked onto the shaft.	Allow bread to cool completely. Gently twist and pull. Soaking the pan in warm water for a few minutes can help loosen it.

SPECIFICATIONS

- **Product Type:** Bread Machine Kneading Paddle
- **Model:** XBM038
- **Compatibility:** Cook's Essentials Bread Machine model XBM036
- **Material:** Metal with non-stick coating
- **Color:** As pictured (typically dark grey or bronze)

WARRANTY AND SUPPORT

For warranty information or technical support regarding your TacPower Cook's Essentials Bread Machine Kneading Paddle, please refer to the documentation provided with your original purchase or contact the retailer where the product was acquired. Keep your purchase receipt as proof of purchase.

