

[manuals.plus](#) /

- › [MAYFLASH](#) /
- › [MAYFLASH F300 Arcade Fight Stick Joystick for Switch/Switch 2, Xbox Series X, PS4,PS3, Xbox One, Xbox 360, macOS, Windows, Steam Deck, NeoGeo mini, NeoGeo Arcade Stick Pro](#)

MAYFLASH F300

MAYFLASH F300 Arcade Fight Stick Instruction Manual

Model: F300

INTRODUCTION

Thank you for choosing the MAYFLASH F300 Arcade Fight Stick. This manual provides detailed instructions to help you set up, operate, and maintain your fight stick, ensuring an optimal gaming experience across multiple platforms. The MAYFLASH F300 is compatible with a wide range of systems including Switch/Switch 2, PS4, PS3, Xbox Series S/X, Xbox One, Xbox 360, PC Windows, macOS, Steam Deck, Android, NeoGeo mini, SEGA MEGA DRIVE, and SEGA GENESIS.

PRODUCT OVERVIEW

The MAYFLASH F300 features a robust design with a high-quality metal panel for stability and durability. It includes a responsive joystick and eight action buttons, designed for precision and comfort during intense gameplay.



Figure 1: Top view of the MAYFLASH F300 Arcade Fight Stick, showing the joystick and action buttons.

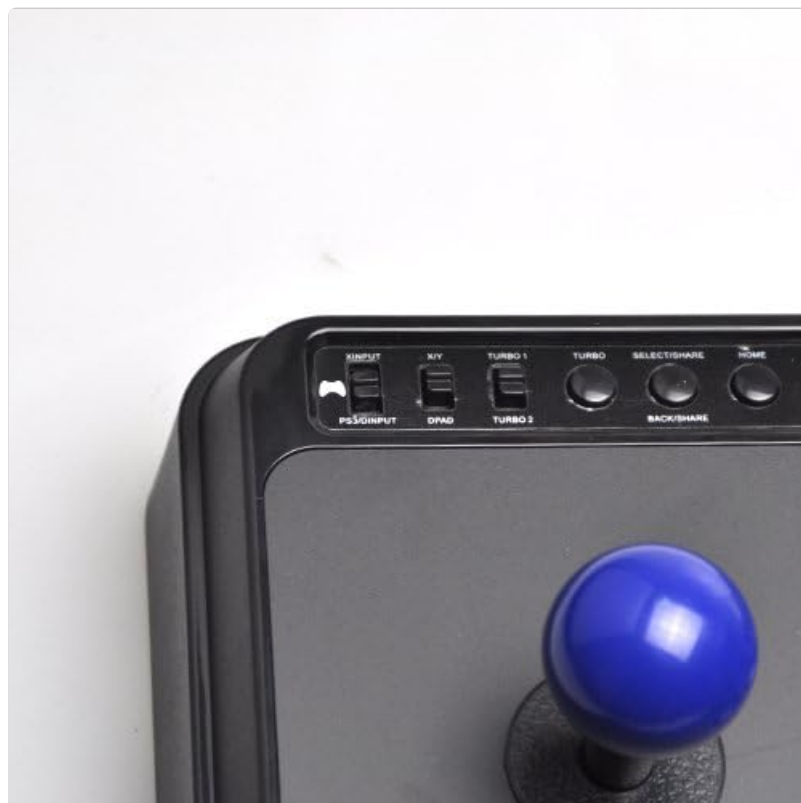


Figure 2: Side view of the MAYFLASH F300, highlighting the USB port for controller connection.



Figure 3: Close-up of the control panel switches for input modes and turbo settings.

SETUP

Follow these steps to connect your MAYFLASH F300 Arcade Fight Stick to your desired gaming platform.

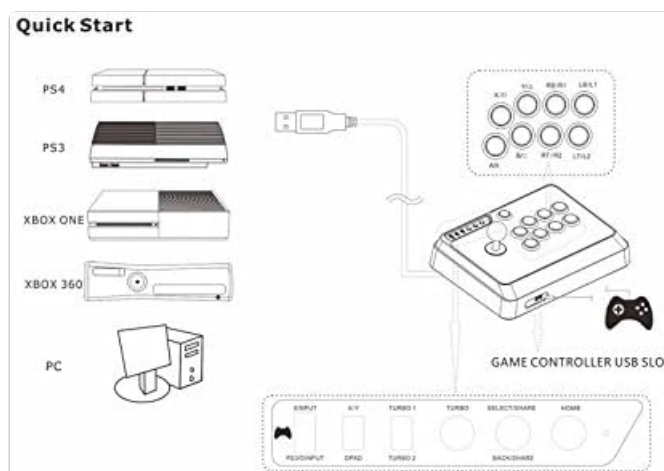


Figure 4: Visual guide for connecting the F300 to various consoles and PC.

1. For PS4/PS3/Xbox One/Xbox 360/Xbox Series S/X:

Connect the original console controller to the USB slot on the MAYFLASH F300 using a USB cable. Then, connect the F300 to your console via its main USB cable. The original controller is required to initiate the fight stick on these consoles.

Note: For Xbox 360, a wired Xbox 360 Controller is needed. For Xbox One, the original Xbox One Controller must be connected via USB cable. For PS4, the original PS4 controller must be connected during gameplay.

2. For Nintendo Switch/Switch 2:

Ensure your Switch console's "Pro Controller Wired Communication" setting is enabled. Connect the F300 directly to the Switch dock via its USB cable.

3. For PC (Windows/macOS/Steam Deck) & Android:

Connect the F300 directly to your PC or Android device via its USB cable. The fight stick supports both XINPUT and DINPUT modes on PC.

Setup Demonstration Video (PS4)

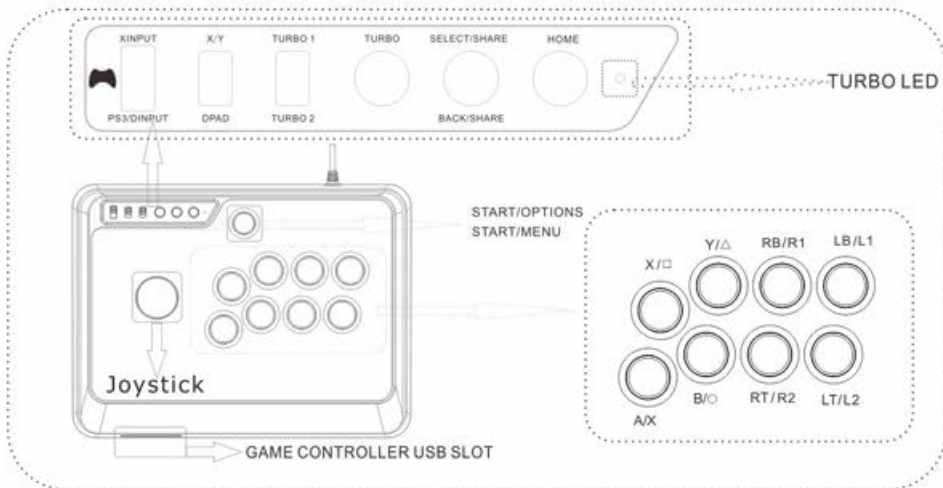
Your browser does not support the video tag.

Video 1: Official MAYFLASH demonstration of connecting the F300 Arcade Stick to a PS4 console.

OPERATING INSTRUCTIONS

Familiarize yourself with the various functions and modes of your MAYFLASH F300.

Additional Function



1.XINPUT, GAME CONSOLE and PS3/DINPUT

- XINPUT: Xbox 360 controller protocol
- GAME CONSOLE: Compatible with PS4, XBOX ONE, XBOX 360
- PS3/DINPUT: Direct Input, standard HID protocol

2.X/Y and Dpad

If the switch is set to the "X/Y", the stick works as the "Left Joystick". If setting the switch to "DPAD", the stick works as "POV".

3.TURBO-1 and TURBO-2

- TURBO-1: The Turbo speed is 15 times/ second
- TURBO-2: The Turbo speed is 25 times/second

4.TURBO

- The 8 function buttons (A/X, B/O, X/□, Y/△, RB/R1, RT/R2, LB/L1, LT/L2) can be set for TURBO.
- To set Turbo for individual buttons, press and hold the button that you wish to set TURBO for, and the button "TURBO" on the fighting stick. You'll find that the TURBO LED will flash, and the setting is finished.
- To remove the setting for that specific button, press and hold the button you previously set Turbo for and the TURBO button. To clear all Turbo settings for all buttons, quickly press the TURBO button twice within half of a second.

Figure 5: Detailed view of the F300's control panel, showing button labels and switches.

• XINPUT and DINPUT Modes (PC):

The F300 supports both XINPUT (Xbox 360 controller protocol) and DINPUT (Direct Input, standard HID protocol) when used on PC. Use the switch on the control panel to select the desired mode.

• X/Y and D-Pad Mode:

The D-Pad and X/Y Analog Axis mode can be exchanged using the dedicated switch. If the switch is set to "X/Y", the stick functions as the "Left Joystick". If set to "DPAD", the stick functions as "POV".

• Turbo Functions:

The F300 supports Turbo functions with different speed settings. There are two Turbo speeds: Turbo 1 (15

times/second) and Turbo 2 (25 times/second).

To set Turbo for individual buttons (A/X, B/O, X/□, Y/△, RB/R1, RT/R2, LB/L1, LT/L2), press and hold the button you wish to set Turbo for, and then press the TURBO button. The TURBO LED will flash, indicating the setting is finished.

To remove the Turbo setting for a specific button, press and hold the button previously set for Turbo and press the TURBO button again. To clear all Turbo settings for all buttons, quickly press the TURBO button twice within half a second.

MAINTENANCE

To ensure the longevity and optimal performance of your MAYFLASH F300, follow these maintenance guidelines:

- **Cleaning:**

Wipe the surface of the fight stick with a soft, dry cloth. Avoid using abrasive cleaners or solvents that may damage the finish.

- **Storage:**

Store the fight stick in a cool, dry place away from direct sunlight and extreme temperatures.

- **Customization (Modding):**

The F300 is compatible with Sanwa Denshi buttons and joysticks, making it ideal for customization. The back panel can be easily unscrewed to access internal components for part swapping. Cables are color-coded for straightforward modifications.

TROUBLESHOOTING

If you encounter any issues with your MAYFLASH F300, refer to the following common solutions:

- **Connection Issues:**

Ensure all cables are securely connected. For console connections requiring an original controller, verify that the original controller is properly connected and recognized by the console before connecting the F300.

If experiencing issues with Xbox Series S/X, ensure your Xbox controller is updated to the latest version.

- **Input Not Responding:**

Check the input mode switch (XINPUT/DINPUT) on the control panel to ensure it is set correctly for your platform. Verify the D-Pad/X/Y Analog Axis mode switch is in the desired position.

- **Turbo Function Malfunction:**

Refer to the "Operating Instructions" section for correct Turbo setting and clearing procedures. Ensure no conflicting settings are active.

SPECIFICATIONS

Feature	Detail
Brand	MAYFLASH
Model Name	F300 Arcade Fight Stick
Item Model Number	F300
Compatible Devices	Switch, PS4, PS3, Xbox Series S/X, Xbox One, Xbox 360, PC Windows, macOS, Steam Deck, Android, NeoGeo mini, SEGA Mega Drive, Genesis
Controller Type	Joystick
Connectivity Technology	USB
Item Weight	3.98 pounds
Product Dimensions	22 x 13 x 11 inches
Color	Black, Blue
Power Source	Corded Electric

WARRANTY & SUPPORT


For warranty information and technical support, please visit the official MAYFLASH website or contact their customer service. Keep your purchase receipt as proof of purchase for any warranty claims.




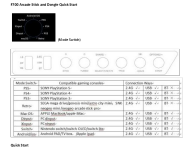

Important Legal Disclaimer: When using on Xbox 360, Xbox One, or PS4 consoles, the original console controller is required to first initiate the MAYFLASH F300. Wireless Xbox 360 controllers with play & charge kits do NOT work for this purpose. Xbox One Elite controllers do NOT work for this purpose. The original PS4 controller must be connected during gameplay.

For the latest firmware updates and additional support, please refer to the MAYFLASH official support channels.

© 2024 MAYFLASH. All rights reserved.

Related Documents - F300

	<p>MAYFLASH Arcade Stick F500 Elite User Manual and Quick Start Guide</p> <p>Comprehensive guide for the MAYFLASH Arcade Stick F500 Elite, detailing its features, operation, and connectivity with various gaming consoles and platforms including PS4, Xbox, Switch, PC, Android, and more. Includes setup instructions and button mapping.</p>
---	---

	<p>Mayflash MAGIC-S Ultimate USB Wireless Adapter User Manual</p> <p>User manual for the Mayflash MAGIC-S Ultimate USB Wireless Adapter, detailing system compatibility, controller compatibility, quick start guide, setup instructions, vibration intensity modification, dead zone adjustment, software updates, and controller button mapping for various gaming consoles and PC.</p>
	<p>Mayflash MAGIC-NS Wireless Controller Adapter User Manual</p> <p>User manual for the Mayflash MAGIC-NS Wireless Controller Adapter, detailing setup and usage for various gaming consoles including Nintendo Switch, PS3, PC, NEOGEO mini, and PS Classic. Covers wired and wireless controller connections, button mapping, and software updates.</p>
	<p>Mayflash MAGIC-X USB Wireless Adapter User Manual</p> <p>User manual for the Mayflash MAGIC-X USB Wireless Adapter, detailing its compatibility, setup, and advanced functions for connecting various controllers to multiple gaming systems.</p>
	<p>F700 Arcade Stick and Dongle Quick Start Guide</p> <p>A quick start guide for the F700 Arcade Stick and Dongle, covering 2.4g, Bluetooth, and wired connections, as well as TURBO function and firmware upgrades.</p>
	<p>Mayflash MAGIC-S Ultimate USB Wireless Adapter User Manual</p> <p>User manual for the Mayflash MAGIC-S Ultimate USB Wireless Adapter, detailing its compatibility with various consoles and controllers, setup instructions for wired and wireless connections, and Bluetooth headset usage.</p>