

Manuals+

[Q & A](#) | [Deep Search](#) | [Upload](#)

manuals.plus /

- › [iRobot](#) /
- › [Right Wheel Module \(R\) Compatible with iRobot Roomba 870, 871, 880, 980](#)

iRobot 4420152

iRobot Roomba Right Wheel Module Instruction Manual

Model: 4420152

1. PRODUCT OVERVIEW

This document provides instructions for the installation and maintenance of the iRobot Roomba Right Wheel Module, part number 4420152. This module is a crucial component for the mobility and navigation of your Roomba robot vacuum cleaner, ensuring it operates smoothly and efficiently.

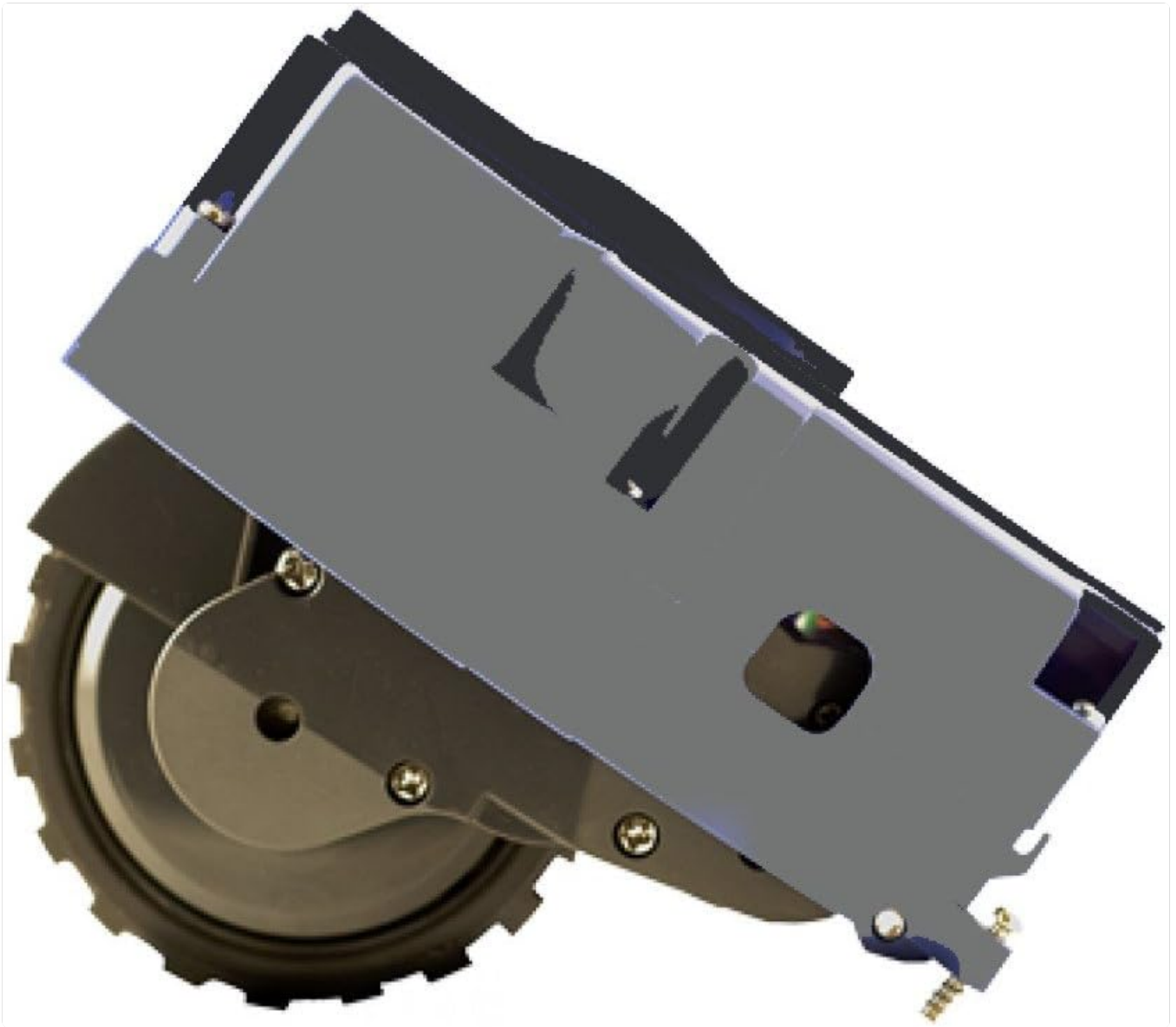


Image 1: The iRobot Roomba Right Wheel Module, showing its integrated wheel and housing.

1.1 Compatibility

This Right Wheel Module (Part Number 4420152) is compatible with a wide range of iRobot Roomba models, including but not limited to:

- **Roomba 500 Series:** 505, 510, 520, 521, 530, 531, 532, 534, 535, 545, 550, 552, 555, 560, 562, 564, 570, 571, 572 Pet, 580, 581, 595 Pet, etc.
- **Roomba 600 Series:** 610, 615, 620, 630, 650, 651, 660, 661, 655, 680, 681, 690, PET, etc.
- **Roomba 700 Series:** 760, 770, 780, 790, 765, 775, 776, 782, 772, 786, 785, etc.
- **Roomba 800 Series:** 866, 870, 871, 880, etc.
- **Roomba 900 Series:** 960, 966, 980, etc.

Please verify your specific Roomba model number to ensure compatibility before installation.

2. SAFETY INFORMATION

Always observe the following safety precautions when handling or replacing parts of your Roomba:

- **Disconnect Power:** Before attempting any installation or maintenance, always ensure your Roomba is turned off and unplugged from its charging base. Remove the battery if possible.

- **Use Proper Tools:** Use only appropriate tools for disassembly and assembly to avoid damaging the robot or the new part.
- **Handle with Care:** Electronic components can be sensitive. Handle the wheel module and internal parts of your Roomba with care.
- **Keep Away from Children:** Small parts can be a choking hazard. Keep the module and tools out of reach of children.

3. INSTALLATION (SETUP)

Replacing the right wheel module typically involves a few steps. While specific procedures may vary slightly by Roomba model, the general process is as follows:

1. **Prepare the Roomba:** Turn your Roomba over onto a flat, stable surface. Ensure it is powered off and the battery is removed.
2. **Remove Bottom Cover:** Locate and remove the screws holding the bottom cover of your Roomba. Carefully lift off the cover.
3. **Locate the Right Wheel Module:** Identify the right wheel module. It is usually secured by several screws.
4. **Disconnect Wiring:** Gently disconnect any wiring harnesses connected to the wheel module. Take note of their orientation for reassembly.
5. **Remove Old Module:** Unscrew and remove the old right wheel module from the Roomba chassis.
6. **Install New Module:** Position the new right wheel module in place. Secure it with the screws you removed earlier.
7. **Reconnect Wiring:** Carefully reconnect the wiring harnesses to the new module, ensuring a secure connection.
8. **Reassemble Roomba:** Replace the bottom cover and secure it with all screws. Reinsert the battery.

For detailed, model-specific instructions, refer to your Roomba's original user manual or an official iRobot service guide.

4. OPERATING (POST-INSTALLATION CHECK)

After installing the new right wheel module, perform a quick operational check:

- **Power On:** Place your Roomba on its charging base or manually power it on.
- **Initiate Cleaning Cycle:** Start a short cleaning cycle. Observe the robot's movement.
- **Check Wheel Function:** Ensure both wheels are spinning freely and the robot is moving in a straight line or turning correctly. Listen for any unusual noises.
- **Verify Navigation:** Confirm that the Roomba navigates obstacles and cleans as expected.

If any issues arise, refer to the Troubleshooting section.

5. MAINTENANCE

To ensure the longevity and optimal performance of your new wheel module and your Roomba, regular maintenance is recommended:

- **Clean Wheels Regularly:** Periodically inspect the wheels and wheel wells for accumulated hair, dust, and debris. Use a small brush or cloth to clean them.
- **Check for Obstructions:** Ensure nothing is wrapped around the wheel axles or obstructing the wheel's movement.
- **Avoid Excessive Moisture:** Do not expose the wheel module or the Roomba to excessive moisture, as this can damage internal components.

6. TROUBLESHOOTING

If you encounter issues after replacing the wheel module, consider the following:

- **Wheel Not Spinning:**
 - Check if the wheel is obstructed by debris.
 - Ensure the wiring harness is securely connected to the module and the Roomba's main board.
 - Verify the module is correctly seated and all screws are tightened.
- **Roomba Moves Unevenly or in Circles:**
 - This could indicate an issue with the newly installed wheel or the opposite wheel. Clean both wheels thoroughly.
 - Ensure the wheel module is fully engaged and not loose.
 - Perform a Roomba reset (refer to your Roomba's user manual for specific instructions).
- **Unusual Noises:**
 - Inspect the wheel for any foreign objects or damage.
 - Ensure the module is properly installed and not rubbing against other components.

If problems persist, contact iRobot customer support or a qualified service technician.

7. SPECIFICATIONS







Attribute	Detail
Part Number	4420152
Compatibility	iRobot Roomba 500, 600, 700, 800, 900 Series (Right Wheel)
Material	Plastic
Color	All Grey
Item Weight	240 g
Manufacturer	iRobot

8. WARRANTY AND SUPPORT

For information regarding the warranty of this replacement part, please refer to the terms and conditions provided by your retailer or the manufacturer, iRobot. Warranty coverage may vary depending on the point of purchase.

If you require further assistance with installation, troubleshooting, or have questions about your Roomba, please visit the official iRobot support website or contact their customer service directly. You can often find detailed guides, FAQs, and contact information on their website: www.irobot.com/support

Related Documents - 4420152

 <p>800 Series Owner's Guide</p>	<p>iRobot Roomba 800 Series Owner's Guide: Setup, Usage, and Maintenance</p> <p>Comprehensive owner's guide for the iRobot Roomba 800 Series vacuuming robot. Learn about setup, scheduling, cleaning modes, regular maintenance, troubleshooting, and customer support for your Roomba.</p>
 <p>iRobot Roomba 870 Caster Wheel Replacement</p>	<p>iRobot Roomba 870 Caster Wheel Replacement Guide</p> <p>A step-by-step guide on how to replace the caster wheel on an iRobot Roomba 870 if it becomes stuck or broken.</p>
 <p>800 Series User Manual and Guide</p>	<p>iRobot Roomba 800 Series User Manual and Guide</p> <p>Detailed user manual for the iRobot Roomba 800 series robot vacuum cleaner, covering setup, operation, safety, maintenance, troubleshooting, and accessories like Virtual Wall and Home Base. Learn how to get the best performance from your Roomba.</p>
 <p>Kullanıcı Kılavuzu 900 Serisi</p>	<p>iRobot Roomba 900 Serisi Kullanıcı Kılavuzu</p> <p>Kullanım kılavuzu ve bakım bilgileri iRobot Roomba 900 Serisi robot süpürge için. Güvenlik talimatları, kurulum, kullanım, sorun giderme ve garanti bilgileri içerir.</p>
	<p>iRobot Roomba 900 Series Quick Start Guide</p> <p>A concise guide for setting up and starting your iRobot Roomba 900 robot vacuum. Learn how to set up the Home Base, activate the robot, and download the iRobot HOME app for enhanced features.</p>
 <p>iRobot Roomba 560 Battery Replacement</p>	<p>iRobot Roomba 560 Battery Replacement Guide</p> <p>A step-by-step guide to replacing the battery in an iRobot Roomba 560 vacuum cleaner, including tools and parts needed.</p>



Movetherm Elektro
 Paddevijverstraat 56 - Ieper
 Tel +32 (0)57 20 01 21 -
info@movetherm.be
movetherm.be

MA	09:00 - 12:00	13:30 - 18:30
DI	09:00 - 12:00	13:30 - 18:30
WO	09:00 - 12:00	13:30 - 18:30
DO	09:00 - 12:00	13:30 - 18:30
FR	09:00 - 12:00	13:30 - 18:30
SA	10:00 - 12:00	14:00 - 18:00
ZO	10:00 - 12:00	14:00 - 18:00

Rechterwielmodule voor alle reeksen - IROBOT



€ 25,-




Rechterwielmodule voor alle reeksen
 4420152
 IROBOT - Robotstofzuiger accessoires



De rechterwielmodule is eenvoudig en snel te vervangen, enkel een kleine schroevendraaier nodig.

pag. 1/1 - Informatie op deze pagina is uitsluitend informatief karakter en kan wijziging onderhevig - printd at 01:38 25/08/2022 -




[pdf]

Rechterwielmodule voor alle reeksen IROBOT Movetherm prieš 3 dienas — pag 1 Informatie op deze pagina is uitsluitend informatief indicatief en aan wijziging onderhevig 1661394970 movetherm be nl product 277537 |||

Movetherm Elektro Paddevijverstraat 56 - Ieper Tel 32 0 57 20 01 21 info movetherm.be movetherm.be ... GESLOTEN Rechterwielmodule voor alle reeksen - IROBOT 25,- Rechterwielmodule voor alle reeksen **4420152** IROBOT - Robotstofzuiger accessoires De rechterwielmodule is eenvoudig en snel te vervangen,...

lang:nl score:24 filesize: 73.31 K page_count: 1 document date: 2022-08-25