

CUB CADET 747-06429

CUB CADET 747-06429 Spindle Idler Drive Lock Rod Instruction Manual

For Models 19A40023100, 19A40024100, and compatible 3X 42-inch Snow Throwers

INTRODUCTION

This manual provides essential information for the proper installation, function, and maintenance of the CUB CADET 747-06429 Spindle Idler Drive Lock Rod. This component is designed for specific CUB CADET 3X 42-inch snow thrower models and other compatible equipment. Please read these instructions carefully before proceeding with any installation or maintenance.

Important Safety Notice: Always refer to your main equipment's owner's manual for specific safety precautions and detailed assembly instructions. Disconnect power before performing any service or maintenance.

PRODUCT OVERVIEW



Figure 1: The CUB CADET 747-06429 Spindle Idler Drive Lock Rod. This image shows the overall shape and construction of the lock rod, which is a bent metal rod with a retaining ring and a notched end.

The 747-06429 Spindle Idler Drive Lock Rod is an original equipment manufacturer (OEM) part from CUB CADET. It plays a crucial role in the drive system of compatible snow throwers, specifically in relation to the spindle idler mechanism. Its design ensures proper engagement and disengagement of drive components.

SETUP AND INSTALLATION

Installation of the Spindle Idler Drive Lock Rod requires careful attention to detail and adherence to the specific instructions provided in your equipment's service manual. The following steps are general guidelines; always consult your equipment's manual for precise procedures.

1. **Safety First:** Ensure the equipment is turned off, the engine is cool, and the spark plug wire is disconnected to prevent accidental starting.
2. **Access the Area:** Depending on your specific snow thrower model, you may need to remove covers or other components to gain access to the spindle idler drive mechanism.
3. **Remove Old Rod (if applicable):** If replacing an existing rod, carefully remove any retaining clips or fasteners holding the old rod in place. Note its orientation for correct installation of the new part.
4. **Install New Rod:** Insert the new 747-06429 lock rod into its designated position. Ensure that the bent sections and retaining features align correctly with the corresponding holes and brackets in the idler assembly.
5. **Secure the Rod:** Reinstall any retaining clips, pins, or fasteners to secure the lock rod firmly. Verify that it is seated properly and does not have excessive play.
6. **Reassemble and Test:** Reattach any removed covers or components. Reconnect the spark plug wire. Perform a functional test of the drive system at a low speed in a safe, open area to ensure proper operation before full use.



Figure 2: A side profile of the lock rod, highlighting the bend and the retaining collar. This view is helpful for understanding how the rod fits into the assembly.

FUNCTION AND OPERATION

The CUB CADET 747-06429 Spindle Idler Drive Lock Rod is an integral part of the snow thrower's drive system. Its primary function is to provide a pivot point or a locking mechanism for the idler pulley assembly. This assembly is responsible for maintaining proper tension on the drive belt, which in turn transmits power from the engine to the auger or wheels.

When the drive lever is engaged, the lock rod facilitates the movement of the idler pulley, increasing tension on the belt and engaging the drive. When the lever is released, the rod allows the idler to relax, disengaging the drive. Proper functioning of this rod is essential for the smooth and reliable operation of your snow thrower's drive system.



Figure 3: An angled perspective of the lock rod, showing the distinct L-shape and the end designed for attachment. This view helps in

MAINTENANCE

Regular inspection and maintenance of the 747-06429 Spindle Idler Drive Lock Rod can extend its lifespan and ensure consistent performance of your equipment.

- **Visual Inspection:** Periodically inspect the rod for signs of wear, bending, corrosion, or damage. Ensure that it is securely in place and that any retaining clips or pins are intact.
- **Lubrication:** If the rod operates in a pivot point, apply a small amount of appropriate grease or lubricant to ensure smooth movement and prevent rust. Consult your equipment's manual for recommended lubrication points and types.
- **Cleaning:** Keep the area around the idler assembly and lock rod free from dirt, debris, and rust buildup, which can impede its movement.
- **Replacement:** If the rod shows significant wear, bending, or damage, it should be replaced immediately to prevent further damage to the drive system or operational failure.



Figure 4: A detailed close-up of the lock rod, emphasizing the texture and finish of the metal. This view can assist in identifying genuine parts and assessing material quality.

TROUBLESHOOTING

If you experience issues with your snow thrower's drive system, the 747-06429 Spindle Idler Drive Lock Rod could be a contributing factor. Consider the following:

- **Drive Not Engaging/Disengaging Properly:**
 - Check if the lock rod is bent or damaged, preventing the idler pulley from moving freely.
 - Ensure the rod is properly seated and not dislodged from its mounting points.
 - Verify that any associated springs or linkages are intact and functioning.
- **Excessive Noise or Vibration from Drive System:**
 - A bent or worn lock rod can cause misalignment or improper tension, leading to noise.
 - Inspect for signs of wear on the rod or surrounding components that might indicate friction or improper fit.
- **Rod Appears Loose or Detached:**

- Check retaining clips or pins for damage or absence. Replace as necessary.
- Ensure the mounting holes are not elongated or damaged.

If troubleshooting does not resolve the issue, it is recommended to consult a qualified service technician or refer to your equipment's comprehensive service manual.

SPECIFICATIONS

Attribute	Detail
Part Number	747-06429
Brand	CUB CADET
Product Dimensions	3.5 x 3 x 1 inches
Item Weight	4.8 ounces
Manufacturer	CUB CADET
Compatible Models	19A40024100, 19A40023100 (3X Snow Thrower)

WARRANTY AND SUPPORT

For information regarding the warranty of your CUB CADET 747-06429 Spindle Idler Drive Lock Rod, please refer to the warranty documentation provided with your original equipment or contact CUB CADET customer support directly.

Warranty terms typically cover defects in materials and workmanship under normal use.

For technical assistance, parts inquiries, or to locate an authorized service center, please visit the official CUB CADET website or contact their customer service department. Always provide the part number (747-06429) and your equipment's model and serial number when seeking support.

CUB CADET Official Website: www.cubcadet.com



© 2023 CUB CADET. All rights reserved. This manual is for informational purposes only.

Related Documents - 747-06429



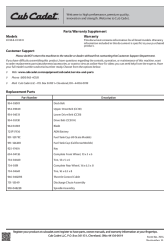
[Cub Cadet 528 SWE Two-Stage Snow Thrower Operator's Manual](#)

Comprehensive operator's manual for the Cub Cadet 528 SWE Two-Stage Snow Thrower, covering safety, setup, operation, maintenance, and troubleshooting.



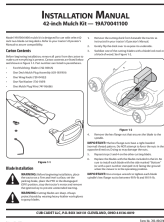
[Cub Cadet Three Stage Track Snow Thrower Operator's Manual](#)

Comprehensive operator's manual for the Cub Cadet Three Stage Track Snow Thrower, covering safe operation, assembly, controls, maintenance, and troubleshooting.



[Cub Cadet CC30 & CC30 H Parts List and Limited Warranty Information](#)

Comprehensive parts list and limited warranty details for Cub Cadet CC30 and CC30 H models. Includes customer support contact information, warranty coverage, exclusions, and limitations.



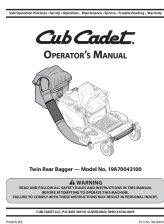
[Cub Cadet 42-inch Mulch Kit 19A70041100 Installation Manual](#)

Step-by-step installation guide for the Cub Cadet 42-inch Mulch Kit (Model 19A70041100), including carton contents, blade installation, and mulch plug attachment. Features safety warnings and important notes.



[Cub Cadet 500 Series Snow Thrower Parts Manual \(524 SWE, 528 SWE\)](#)

Illustrated parts manual for Cub Cadet 500 Series Snow Throwers, models 524 SWE and 528 SWE, including engine parts for ZS 370-SU and Briggs & Stratton 20M300.



[Cub Cadet Twin Rear Bagger 19A70043100 Operator's Manual](#)

Operator's manual for the Cub Cadet Twin Rear Bagger Model 19A70043100, covering safety instructions, assembly, installation, operation, parts list, and warranty information. Includes detailed steps and diagrams described textually.

