

Manuals+

[Q & A](#) | [Deep Search](#) | [Upload](#)

manuals.plus /

- › [Canon](#) /
- › [Canon SELPHY CP1200 Wireless Color Photo Printer User Manual](#)

Canon CP1200

Canon SELPHY CP1200 Wireless Color Photo Printer User Manual

INTRODUCTION

This manual provides detailed instructions for setting up, operating, and maintaining your Canon SELPHY CP1200 wireless color photo printer. Please read this manual thoroughly before using the printer to ensure correct operation and to maximize its performance and lifespan.



Image: Front view of the Canon SELPHY CP1200 printer, showcasing its compact design and control panel with a small LCD screen displaying a photo.

WHAT'S IN THE BOX

Verify that all the following items are included in your package:

- SELPHY CP1200 Wireless Compact Photo Printer
- Compact Power Adapter
- Paper Cassette (Postcard Size)

SETUP

1. Power Connection

Connect the compact power adapter to the printer and then to a power outlet. The printer will power on automatically or can be turned on using the power button.

2. Loading Paper and Ink

The SELPHY CP1200 uses a combined ink and paper kit. Ensure you have the correct kit for your desired print size (e.g., postcard size, label size, square).

1. Open the paper cassette cover.
2. Load the photo paper into the cassette with the glossy side facing up. Do not touch the printing surface.
3. Insert the ink cassette into the printer's ink cassette slot until it clicks into place.
4. Attach the paper cassette to the printer.



Image: The Canon SELPHY CP1200 printer with its paper cassette extended, illustrating the paper loading process and a photo emerging from the printer.

3. Initial Wireless Setup

The printer features a dedicated Wi-Fi button for easy connection. Follow the on-screen prompts on the printer's LCD to connect to your wireless network.

OPERATING INSTRUCTIONS

Printing from Smart Devices (Wi-Fi/AirPrint)

The SELPHY CP1200 supports wireless printing from compatible smartphones, tablets, and Apple devices (iPhone, iPad, iPod touch) via AirPrint or the Canon PRINT Inkjet/SELPHY app.

1. Ensure your smart device and the printer are connected to the same Wi-Fi network.
2. For iOS devices, select the print option from your photo application and choose the SELPHY CP1200.
3. For other devices, download and install the Canon PRINT Inkjet/SELPHY app. Select your desired photo within the app and follow the on-screen instructions to print.



Image: The Canon SELPHY CP1200 printer positioned next to a smartphone, illustrating the wireless printing capability where the image on the phone is being sent to the printer.

Printing from USB or Memory Card

You can print directly from a USB flash drive or a compatible memory card inserted into the printer's card slot.

1. Insert the USB flash drive or memory card into the designated slot on the printer.
2. Use the printer's control panel and LCD screen to navigate through your photos.
3. Select the desired photos and adjust print settings (e.g., borders, effects) as needed.
4. Press the Print button to start printing.



Image: The Canon SELPHY CP1200 printer actively printing a photo, with the paper cassette extended and a partially printed image visible.

Print Options and Effects

The printer allows for various print options, including different sizes (postcard, label, square, mini stickers) and creative effects. You can also print only specific parts of an image using the cropping function.

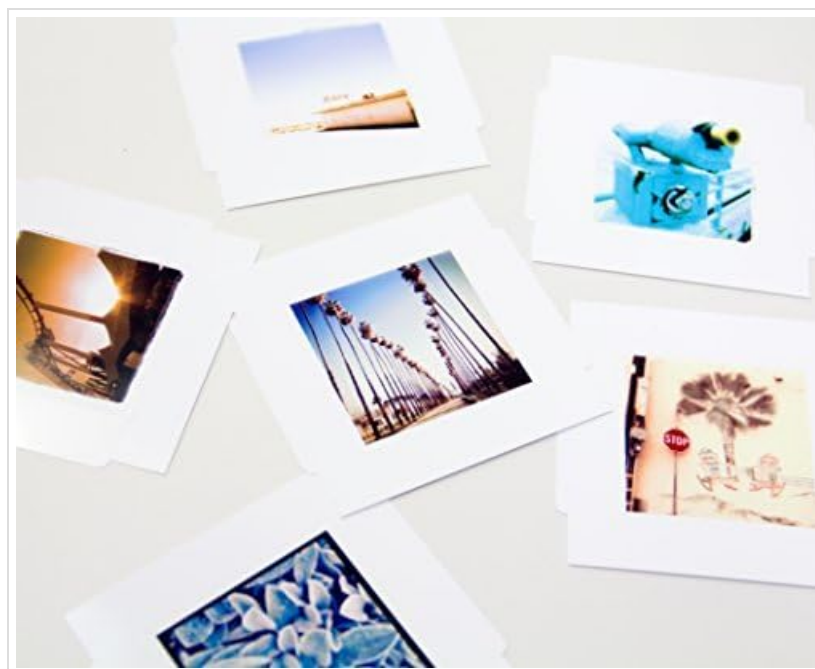


Image: A collection of small, square photo prints, demonstrating the printer's capability to produce various print formats and sizes.

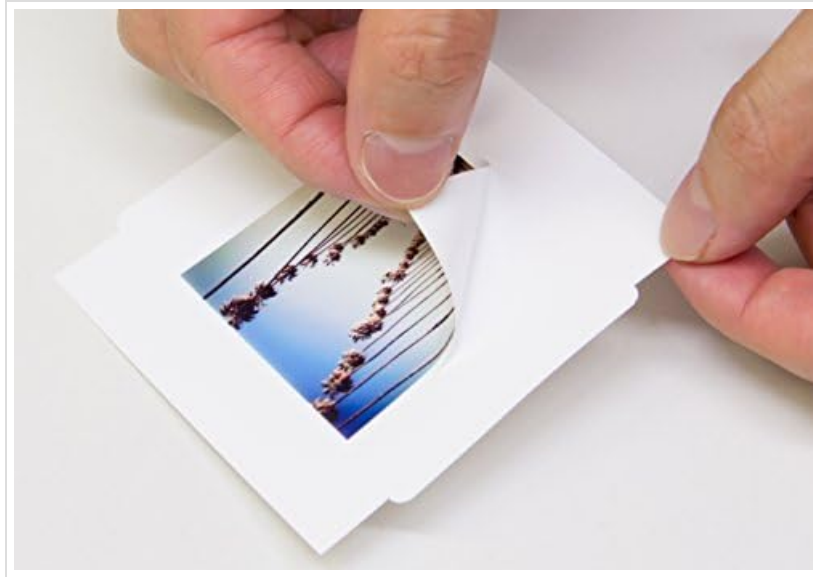


Image: A close-up of hands peeling a small photo sticker from its backing, highlighting the printer's ability to create sticker prints.

MAINTENANCE

Replacing Ink and Paper

When the ink or paper runs out, replace the entire ink and paper kit. Each kit contains the exact amount of ink for the included paper, ensuring no waste.

1. Turn off the printer.
2. Remove the used ink cassette and paper cassette.
3. Insert the new ink cassette and load new paper into the paper cassette as described in the Setup section.
4. Turn on the printer.

Cleaning the Printer

Regularly clean the exterior of the printer with a soft, dry cloth. Avoid using liquid cleaners or abrasive materials. Ensure no dust or debris enters the paper path or ink cassette slot.

TROUBLESHOOTING

Common Issues and Solutions

- **Printer not powering on:** Ensure the power adapter is securely connected to both the printer and a working power outlet.
- **Cannot connect to Wi-Fi:** Verify that the printer and your device are within range of the wireless router and that the Wi-Fi password is entered correctly. Restarting both the printer and router may resolve connection issues.
- **Print quality issues (streaks, faded colors):** Ensure the ink cassette is correctly installed and has sufficient ink. Check that the paper is loaded correctly and is not damaged.
- **Paper jams:** Carefully remove any jammed paper from the paper path. Ensure paper is loaded correctly and not overfilled in the cassette.
- **Photos appear too dark/light:** Adjust brightness and contrast settings on the printer's LCD or within the Canon PRINT Inkjet/SELPHY app before printing.

For more detailed troubleshooting, refer to the official Canon support website or contact customer service.

SPECIFICATIONS

Model Name	CP1200
Printing Technology	Dye Sublimation
Connectivity Technology	USB, Wireless (Wi-Fi)
Maximum Media Size	4 x 6 inch (Postcard Size)
Maximum Color Print Resolution	4800x1200 dpi
Power Consumption	60 Watts (On-mode)
Compatible Devices	Laptops, PC, Smartphones
Item Weight	1.9 pounds
Product Dimensions	5.4 x 7.1 x 2.5 inches
Included Components	SELPHY CP1200 Wireless Compact Photo Printer, Compact Power Adapter, Paper Cassette (Postcard Size)

The image displays a grid of 18 feature icons for the Canon SELPHY CP1200, each with a descriptive text box. The features include:

- Instant wireless printing (Wi-Fi)
- Easy printing from Apple devices (AirPrint)
- Simple connection with smart devices (Wi-Fi Direct)
- Fast, lab quality prints (47 min)
- Selectable Print Finish (Glossy or Semi-gloss)
- Long-lasting Canon quality (100 prints)
- Square size stickers (100 stickers)
- Credit card size stickers (100 stickers)
- Creative mini-sticker printing (100 stickers)
- Postcard size prints (4x6 inch)
- Advanced size options for ID Photos (ID Photo)
- Intelligent correction (Image Optimizer)
- Print only the best part of your image (Cropping)
- Large, easy-to-view lift-up LCD (1.5 inch)
- Compatible with SD cards (Memory Card Slots)
- Convenient printing from USB stick (USB Memory)
- Print on the go (USB Memory)

Image: A visual summary of the Canon SELPHY CP1200's features, including wireless printing, Apple device compatibility, print finishes, sticker options, and memory card support.

WARRANTY AND SUPPORT

Canon products are designed for reliability and performance. For information regarding your product's warranty, please refer to the warranty card included with your purchase or visit the official Canon website.

For technical support, driver downloads, or service inquiries, please visit the [Canon Support website](#) or contact Canon customer service directly.

