

manuals.plus /

› [NEEWER](#) /

› [NEEWER NL480 Dimmable Bi-Color LED Video Light Instruction Manual](#)

## NEEWER NL480

# NEEWER NL480 Dimmable Bi-Color LED Video Light Instruction Manual

Model: NL480

## 1. INTRODUCTION

This manual provides detailed instructions for the safe and effective use of your NEEWER NL480 Dimmable Bi-Color LED Video Light. The NL480 is designed for professional video and photography lighting, offering adjustable brightness and color temperature to suit various shooting environments. Please read this manual thoroughly before operation and retain it for future reference.



Image 1.1: NEEWER NL480 LED Video Light with power adapter, diffuser, and carrying bag.

## 2. PACKAGE CONTENTS

Verify that all items listed below are included in your package:

- 1 x NEEWER NL480 LED Video Light
- 1 x White Diffuser
- 1 x Power Adapter
- 1 x Power Cable
- 1 x Carrying Bag

# Package Contents



1 x LED Video Light



1 x White Diffuser



1 x Power Adapter



1 x Power Cable



1 x Carrying Bag

Image 2.1: Visual representation of the NEEWER NL480 package contents.

## 3. PRODUCT FEATURES

### 3.1. Bi-Color LED Bulbs

The NL480 features 480 long-lasting LED bulbs, comprising 240 white and 240 yellow LEDs. This configuration allows for a variable white balance range from 3200K (Tungsten) to 5600K (Daylight), providing flexibility for different lighting conditions. The light boasts a Color Rendering Index (CRI) of 96+, ensuring accurate color reproduction.



Image 3.1: Illustration of the 480 LED beads, highlighting the bi-color arrangement.

### 3.2. U-Mount Bracket

An integrated U-mount bracket allows for 360-degree vertical rotation, enabling precise adjustment of the lighting angle. This feature is crucial for directing light effectively in various shooting scenarios, whether mounted on a light stand or placed on a flat surface.

# U-Mount Bracket

Enables the photographers to adjust the lighting angle according to the shooting environment.

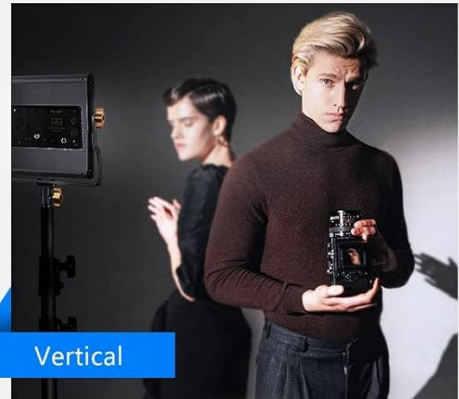
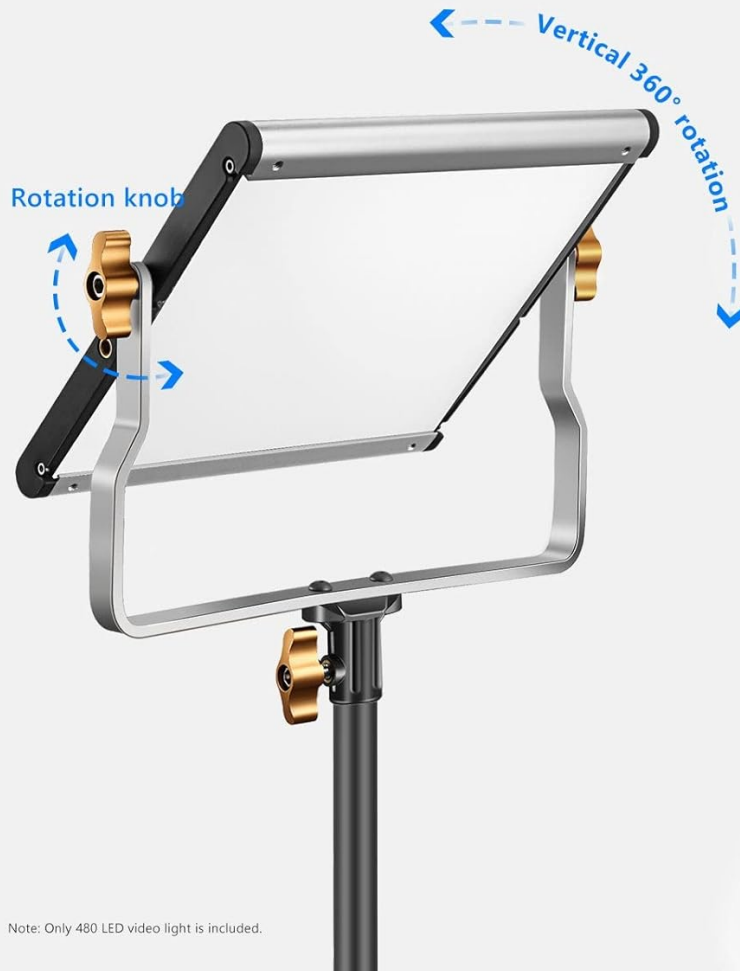


Image 3.2: The U-mount bracket allows for flexible positioning of the light.

## 3.3. Dual Power Options

The NL480 can be powered via the included AC adapter for continuous studio use or by Sony NP-F550/NP-F970 series Li-ion batteries (sold separately) for portable, wireless operation in outdoor or remote locations.

# Dual power options

Note: Only 480 LED video light is included.

Output DC 12V

## Power Adapter



NP-F550/750/970

## Li-ion Battery

(Not included)

Lightweight and easy to carry,  
it is suitable for outdoor shooting.



Image 3.3: The NL480 supports both AC adapter and NP-F series battery power.

### 3.4. Soft Diffuser

A white diffuser is included to soften the light output, reducing harsh shadows and creating a more even, flattering illumination. This is particularly useful for portrait photography, food shooting, and micro movie production.

## Soft Diffuser

The diffuser makes the light softer.  
Great to use in different scenes.



Food shooting



Studio portrait shooting



Micro movie shooting



Image 3.4: The included diffuser helps create softer, more diffused light.

### 3.5. Durable Construction

Constructed from high-quality aluminum alloy, the light features a durable metal frame that ensures longevity and efficient heat dissipation. Its slim design and robust build make it suitable for frequent use and transport.



Portable

## Carry bag

Convenient storage,  
easy to complete outdoor shooting.

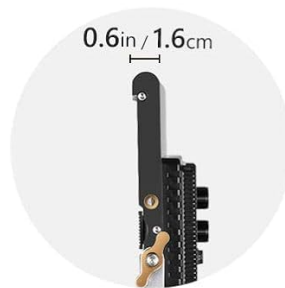
Premium

## Aluminum alloy

Made of premium aluminum alloy material with excellent heat dissipation, it shows simple and elegant appearance and great for long time use.



Aluminum alloy



Ultra slim design



Image 3.5: The NL480's aluminum alloy frame provides durability and effective heat management.

## 4. SETUP INSTRUCTIONS

- 1. Unpack Components:** Carefully remove all items from the carrying bag and packaging.
- 2. Mounting the Light:**
  - Attach the NL480 LED Video Light to a compatible light stand using the U-mount bracket. Ensure the mounting knob is securely tightened.
  - Alternatively, the light can be placed directly on a flat surface using the U-mount bracket as a stand.
- 3. Power Connection:**
  - **AC Power:** Connect the power adapter to the DC 12V input port on the light. Plug the power cable into the adapter and then into a standard wall outlet.
  - **Battery Power (Optional):** If using batteries, insert two compatible Sony NP-F series Li-ion batteries (e.g., NP-F550, NP-F970) into the battery compartments on the back of the light. Ensure they click into place.



Image 4.1: Battery compartments for NP-F series batteries.

4. **Attach Diffuser:** Slide the white diffuser into the slots on the front of the LED panel if softer light is desired.

## 5. OPERATING INSTRUCTIONS

### 5.1. Power On/Off

Locate the power switch on the back of the light. Flip the switch to the 'ON' position to power on the light. Flip it to 'OFF' to power off.

### 5.2. Brightness Adjustment

The NL480 features two dimmer knobs on the back panel. One knob controls the brightness of the yellow LEDs (warm light), and the other controls the brightness of the white LEDs (cold light). Rotate these knobs clockwise to increase brightness and counter-clockwise to decrease brightness. Adjusting both knobs simultaneously will change the overall brightness while maintaining the current color temperature.



Image 5.1: Brightness adjustment knobs for warm and cold light.

### 5.3. Color Temperature Adjustment

To adjust the color temperature, vary the brightness levels of the yellow and white LEDs independently. Increasing the yellow LED brightness relative to the white LEDs will result in a warmer (lower Kelvin) color temperature. Conversely, increasing the white LED brightness relative to the yellow LEDs will result in a cooler (higher Kelvin) color temperature.

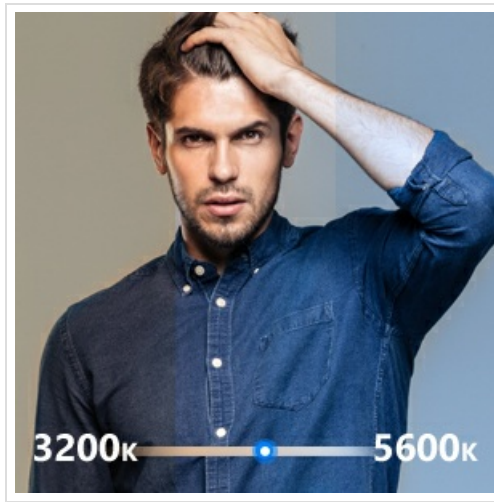


Image 5.2: Visual representation of color temperature adjustment.

## 6. MAINTENANCE

- **Cleaning:** Use a soft, dry cloth to clean the LED panel and housing. Do not use abrasive cleaners or solvents. For the diffuser, a slightly damp cloth can be used, followed by a dry cloth.
- **Storage:** When not in use, store the light and its accessories in the provided carrying bag in a cool, dry place, away from direct sunlight and excessive humidity.
- **Battery Care:** If using batteries, remove them from the light when storing for extended periods. Charge batteries regularly to maintain their lifespan.

## 7. TROUBLESHOOTING

Problem	Possible Cause	Solution
Light does not turn on.	No power supply; loose connection; faulty power adapter/batteries.	Ensure power cable is securely connected. Check if AC outlet is functional. If using batteries, ensure they are charged and correctly inserted. Try a different power source if available.
Light output is too dim or inconsistent.	Brightness knobs set too low; low battery power; dirty LED panel.	Adjust brightness knobs clockwise. If on battery power, replace or recharge batteries. Clean the LED panel with a soft, dry cloth.
Color temperature cannot be adjusted.	Incorrect adjustment of individual color knobs.	Ensure both the warm and cold light brightness knobs are being adjusted to achieve the desired color mix.
Light flickers.	Unstable power supply; low battery power.	Ensure a stable power source. If using batteries, replace or recharge them.

## 8. SPECIFICATIONS

Feature	Detail
---------	--------

Feature	Detail
Model	NL480
LED Beads	480 (240 White, 240 Yellow)
Color Temperature	3200K-5600K
CRI	96+
Power Output	28W
Lumen	4000 Lux/1m
Power Source	AC Adapter (included) or 2x Sony NP-F series batteries (not included)
Material	Aluminum Alloy
Product Dimensions	12.8 x 12.01 x 2.95 inches (approx. 8.3"L x 8.3"W x 10"H for the light panel)
Item Weight	3.39 pounds

## 9. WARRANTY AND CUSTOMER SUPPORT

---

The NEEWER NL480 Dimmable Bi-Color LED Video Light includes a **1-year limited warranty** from the date of purchase. This warranty covers manufacturing defects and workmanship under normal use. It does not cover damage caused by misuse, accidents, unauthorized modifications, or improper maintenance.

For technical assistance, warranty claims, or any inquiries regarding your product, please contact NEEWER customer support. Refer to the official NEEWER website for the most current contact information.

---