

Liebherr 9590335

Liebherr Fridge Freezer Ice Maker Repair Kit Instruction Manual

Model: 9590335

1. INTRODUCTION

This instruction manual provides essential information for the proper installation, maintenance, and troubleshooting of the Liebherr Fridge Freezer Ice Maker Repair Kit, model 9590335. This kit is designed to replace specific components of your existing Liebherr ice maker to restore its functionality. Please read this manual thoroughly before beginning any repair work.

For additional support or specific model diagrams, please refer to your appliance's original user manual or visit the official [Liebherr Store](#).

2. SAFETY INFORMATION

WARNING: Always disconnect power to the appliance before performing any service or maintenance. Failure to do so can result in electric shock, injury, or death.

- Ensure the refrigerator is unplugged from the wall outlet before starting any repair.
- Wear appropriate personal protective equipment, such as gloves, to prevent injury.
- If you are unsure about any step, consult a qualified service technician.
- Keep all components and tools away from children.

3. PACKAGE CONTENTS

The Liebherr Ice Maker Repair Kit typically includes the following components:

- Ice maker housing components (two main plastic frames)
- Ice tray with water inlet tube
- Other small associated parts for assembly



Image 1: Overview of the Liebherr Ice Maker Repair Kit components, including the main housing parts and the ice tray.

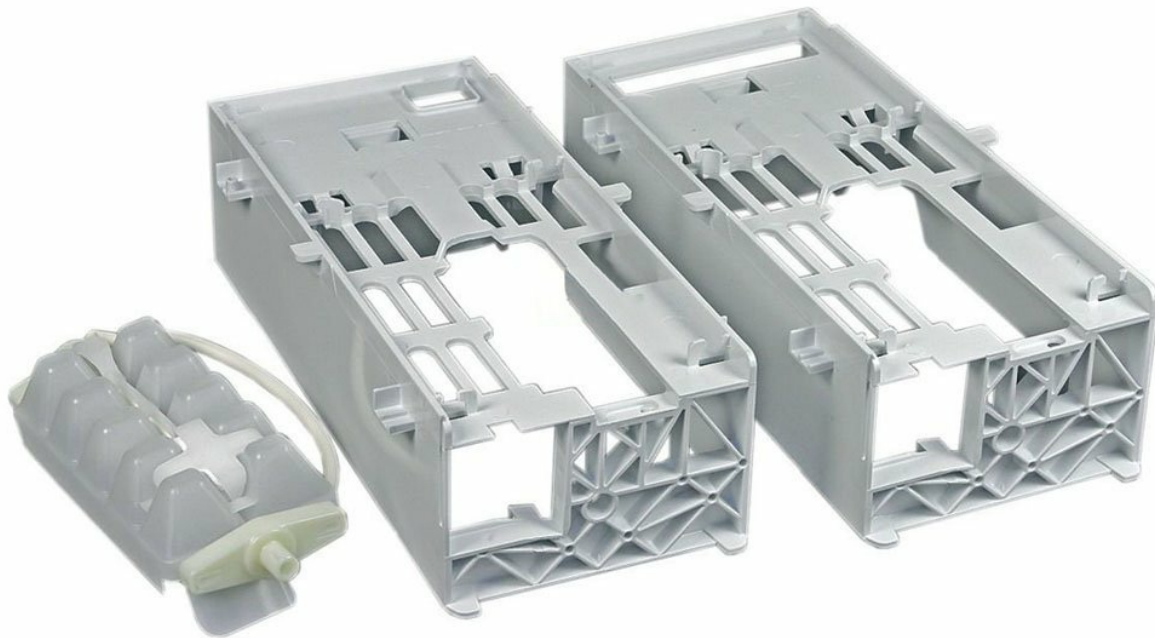


Image 2: Another view of the Liebherr Ice Maker Repair Kit, showing the plastic housing and ice tray from a slightly different perspective.

4. SETUP AND INSTALLATION

This repair kit is intended for replacing specific worn or broken parts of an existing Liebherr ice maker. The exact installation procedure may vary slightly depending on your specific Liebherr refrigerator model. It is highly recommended to consult your appliance's service manual or search for model-specific repair videos online for detailed visual guidance.

General Installation Steps:

1. **Disconnect Power:** Unplug the refrigerator from the electrical outlet.
2. **Access Ice Maker:** Locate and carefully remove the existing ice maker assembly from your freezer compartment. This usually involves unscrewing it from the freezer wall or ceiling and disconnecting any wiring harnesses.
3. **Disassemble Old Unit:** Carefully disassemble the old ice maker unit to identify the parts that need replacement with the new kit components. Pay close attention to how each part is connected.
4. **Install New Components:** Replace the damaged or worn components with the new parts from the repair kit. Ensure all connections are secure and parts are correctly oriented.

- 5. **Reassemble Ice Maker:** Reassemble the ice maker unit, ensuring all screws and clips are properly fastened.
- 6. **Reinstall Ice Maker:** Mount the repaired ice maker assembly back into the freezer compartment. Reconnect any wiring harnesses.
- 7. **Restore Power:** Plug the refrigerator back into the electrical outlet.
- 8. **Test Functionality:** Allow several hours for the ice maker to cycle and produce ice. Check for proper operation and ice production.

Note: Some users have found helpful installation videos on platforms like YouTube by searching for "Liebherr ice maker repair" along with their specific refrigerator model number.

5. OPERATING (POST-REPAIR)

After successful installation of the repair kit, your Liebherr ice maker should resume normal operation. The ice maker typically takes several hours to cool down and begin producing ice after being reconnected to power. The first few batches of ice may be smaller or irregularly shaped; this is normal as the system purges air and stabilizes.

Initial Operation Checklist:

- Ensure the water supply to the refrigerator is turned on.
- Verify that the ice maker's bail arm (if applicable) is in the down position to allow ice production.
- Check for any leaks around the water inlet tube connection.
- Discard the first few batches of ice to ensure cleanliness.

6. MAINTENANCE

Regular maintenance helps ensure the longevity and efficient operation of your ice maker.

- **Clean Ice Bin:** Periodically empty and clean the ice storage bin with mild soap and water. Rinse thoroughly.
- **Inspect Components:** Occasionally inspect the ice maker components for any signs of wear, cracks, or mineral buildup.
- **Water Filter:** If your refrigerator has a water filter, ensure it is replaced according to the manufacturer's recommendations to prevent mineral buildup in the ice maker.
- **Water Supply:** Ensure the water supply line is free from kinks or obstructions.

7. TROUBLESHOOTING

If your ice maker is not functioning correctly after installing the repair kit, consider the following common issues:

Problem	Possible Cause	Solution
---------	----------------	----------

Problem	Possible Cause	Solution
No ice production	Water supply off or kinked Ice maker bail arm in "off" position Freezer temperature too high Improper installation of repair kit components	Check water supply valve and line. Lower bail arm. Ensure freezer is set to 0°F (-18°C) or colder. Review installation steps; ensure all connections are secure.
Small or hollow ice cubes	Low water pressure Clogged water filter Partial obstruction in water fill tube	Check household water pressure. Replace water filter. Inspect and clear water fill tube.
Ice maker making unusual noises	Components not seated correctly Motor or gears issue (less likely with new kit parts)	Re-check installation; ensure all parts are securely fastened. If noise persists, consult a service technician.

If troubleshooting steps do not resolve the issue, it may indicate a problem with other components of the refrigerator or ice maker not included in this repair kit. Contact Liebherr customer service or a qualified technician for further assistance.

8. SPECIFICATIONS

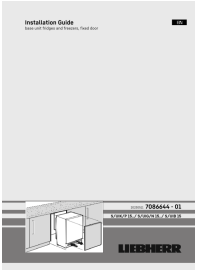



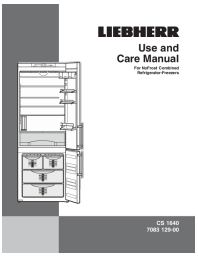
- **Model Number:** 9590335
- **ASIN:** B01933JOZ6
- **Package Dimensions:** 13.35 x 13.11 x 3.58 inches
- **Item Weight:** 1.41 Pounds
- **Date First Available:** March 11, 2016

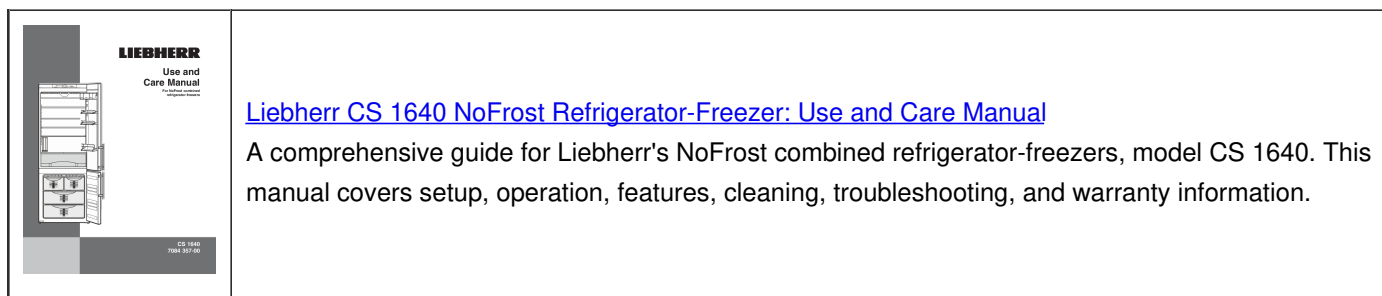
9. WARRANTY AND SUPPORT

This repair kit is a replacement part. Warranty coverage for this specific component may be subject to the terms and conditions of the original appliance warranty or the retailer from whom the kit was purchased. Please retain your proof of purchase.

For detailed warranty information or technical support, please contact Liebherr customer service directly or refer to the warranty documentation provided with your original Liebherr appliance.

You can find more information and contact details on the official [Liebherr website or store page](#).

	<p>LIEBHERR Installation Guide for Base Unit Fridges and Freezers, Fixed Door</p> <p>Comprehensive installation guide for LIEBHERR base unit fridges and freezers with fixed doors. Covers safety instructions, dimensions, unit door fitting, installation in recesses, and final connection.</p>
	<p>Liebherr Integrated Fridge-Freezer User Manual</p> <p>Comprehensive user manual for Liebherr integrated fridge-freezers, detailing operation, features, maintenance, safety guidelines, and troubleshooting steps.</p>
	<p>Liebherr Built-in Fridge and Freezer Installation Guide</p> <p>Comprehensive installation guide for Liebherr built-in refrigerators and freezers, covering safety instructions, installation conditions, appliance and recess dimensions, ventilation requirements, custom panel weights, water connection, appliance setup, door handling, cabinet front mounting, water tank and filter installation, and electrical connection.</p>
	<p>Liebherr Combined Fridge-Freezer Operating Instructions</p> <p>Comprehensive operating instructions for Liebherr combined fridge-freezers, covering installation, usage, maintenance, and troubleshooting. Learn how to optimize energy saving and ensure safe operation.</p>
	<p>Liebherr CS 1640 Refrigerator-Freezer Use and Care Manual</p> <p>A comprehensive guide for the Liebherr CS 1640 NoFrost Combined Refrigerator-Freezer, covering operation, features, safety, troubleshooting, and warranty information.</p>



[Liebherr CS 1640 NoFrost Refrigerator-Freezer: Use and Care Manual](#)

A comprehensive guide for Liebherr's NoFrost combined refrigerator-freezers, model CS 1640. This manual covers setup, operation, features, cleaning, troubleshooting, and warranty information.

Documents - Liebherr – 9590335



[\[pdf\] Catalog Label](#)

List Label Report Estanterías REPA LF ESTANTE DE CRISTAL WHIRLPOOL 470x290 mm

FRIGORÍFICO INDESIT 470 ARISTON C00086393 ARISTON Refrigeracion para domestico Estanterias 201710191802 If b2b lfspareparts724 public minicataloghi |||

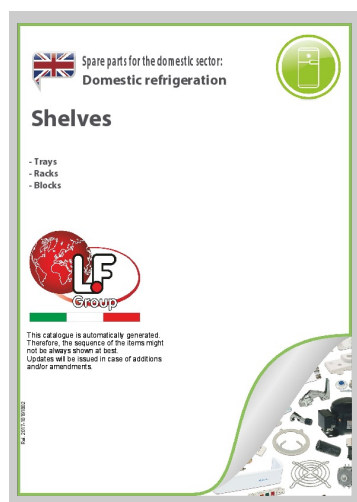
Repuestos para el sector domestico: Refrigeracin para domstico T2 Estanteras T2 -

Bandejas - Estant ... 9326 LIEBHERR 9590475 LIEBHERR 9590151 D380162

ESTANTE ARDO medidas 466x202 mm LIEBHERR **9590335** ARDO 493064300

ARDO 651013513 D380163 ESTANTE ARDO longitud 430 mm - anchura 320...

lang:id **score:16** filesize: 6.22 M page_count: 18 document date: 2017-10-19



[\[pdf\] Dimension Guide Catalog Label](#)

List Label Report Domestic refrigeration Shelves 201710191802 If b2b lfspareparts724 public minicataloghi |||

Spare parts for the domestic sector: Domestic refrigeration T2 Shelves T2 - Trays -

Racks - Blocks ... MAKE LIEBHERR KIT LIEBHERR 7112216 LIEBHERR G539326

LIEBHERR 9590475 LIEBHERR 9590151 LIEBHERR **9590335** The data herewith

contained may change without notice and LF SpA cannot be held responsibl...

lang:af **score:15** filesize: 6.25 M page_count: 18 document date: 2017-10-19