

ROCCAT ROC-11-503

ROCCAT Kova - Pure Performance Gaming Mouse User Manual

Model: ROC-11-503

Brand: ROCCAT

1. INTRODUCTION

The ROCCAT Kova is engineered for pure performance, offering a versatile and responsive gaming experience. Its ambidextrous design ensures comfort for both left and right-handed users, while advanced features like Smart Cast and Easy-Shift[+] provide extensive customization and control. This manual provides essential information for setting up, operating, maintaining, and troubleshooting your ROCCAT Kova gaming mouse.



Figure 1: The ROCCAT Kova Pure Performance Gaming Mouse in White.

2. SETUP

2.1 Connecting the Mouse

Connect the USB cable of your ROCCAT Kova mouse to an available USB port on your computer. The mouse is plug-and-play compatible with Windows operating systems and will be recognized automatically.

2.2 Software Installation (ROCCAT Swarm)

For full customization and access to all features, it is recommended to install the ROCCAT Swarm software. This unified driver suite allows you to manage settings, assign button functions, customize illumination, and update firmware.

1. Visit the official ROCCAT website to download the latest version of the Swarm software.
2. Run the installer and follow the on-screen instructions.
3. Once installed, launch ROCCAT Swarm. The software will detect your Kova mouse and allow you to configure its settings.



Figure 2: ROCCAT Swarm software interface, showing the settings tab for DPI, illumination, and other configurations.



Figure 3: ROCCAT Swarm software interface, displaying the button assignment tab for customizing mouse functions.

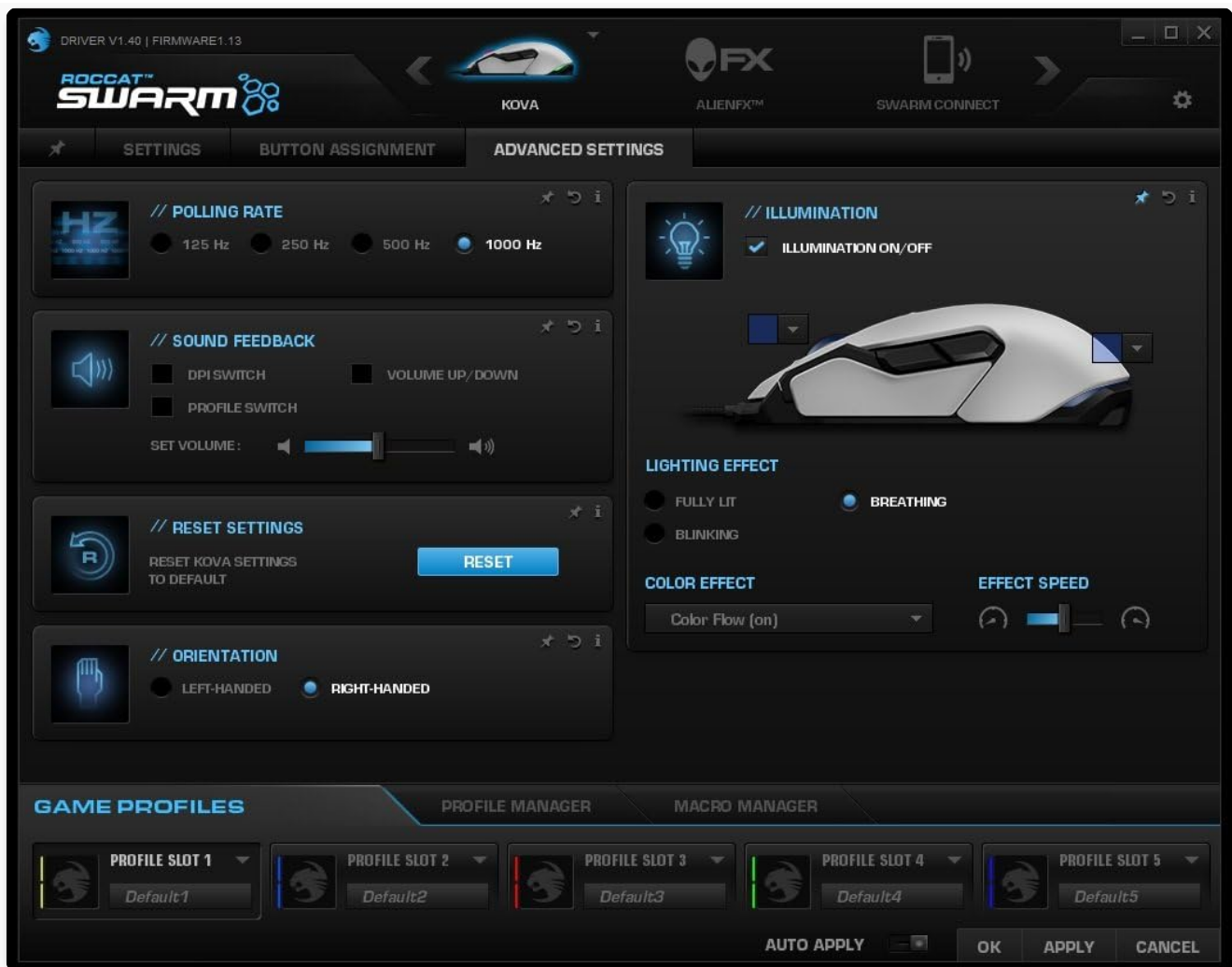


Figure 4: ROCCAT Swarm software interface, showing advanced settings for polling rate, sound feedback, and orientation.

3. OPERATING THE ROCCAT Kova

3.1 Key Features

- **7000 DPI Pro-Optic Sensor R6:** Achieve high precision with a native 3500 DPI sensor, expandable to 7000 DPI via Overdrive mode for enhanced accuracy.
- **Ambidextrous Shape:** Ergonomically designed for comfortable use by both left- and right-handed individuals.
- **ROCCAT Swarm Integrated:** Next-generation driver system for comprehensive customization and unified device management.
- **ROCCAT Easy-Shift[+]:** Duplicator technology that expands the mouse's 11 buttons to 22 programmable functions.
- **16.8M Multicolor Illumination:** Customizable two-level lighting system for personalized aesthetics.

3.2 Smart Cast & Easy-Shift[+]

The Kova features Smart Cast, an intuitive button layout that places primary functions within easy reach. Coupled with ROCCAT's Easy-Shift[+] technology, you can assign a secondary function to almost every button on the mouse. By holding down the designated Easy-Shift[+] button, all other buttons activate their secondary assignments, effectively doubling the mouse's functionality from 11 to 22 programmable actions. This allows for complex macros and quick command execution in games and applications.

3.3 DPI and Overdrive Mode

The Kova is equipped with a highly precise 3500 native DPI Pro-Optic R6 sensor. For situations requiring even greater sensitivity, the pioneering Overdrive mode allows the mouse to achieve an effective DPI of 7000. This is managed by the powerful Turbo Core V2 32-bit ARM-based MCU, ensuring stable and accurate tracking even at higher DPI settings.

3.4 Illumination Customization

Personalize your Kova with its vivid RGB lighting illumination system. You can independently configure the color of the scroll wheel and the mouse rim from a palette of 16.8 million colors. The ROCCAT Swarm software provides an arsenal of advanced lighting effects, allowing you to create a unique visual style for your mouse.



Figure 5: The Kova mouse showcasing green illumination on the scroll wheel.



Figure 6: The Kova mouse showcasing yellow illumination on the scroll wheel.



Figure 7: Side view of the Kova mouse with blue illumination.



Figure 8: Side view of the Kova mouse with green illumination.



Figure 9: Rear view of the Kova mouse with blue illumination.



Figure 10: Top-down view of the Kova mouse with red illumination.



Figure 11: Top-down view of the Kova mouse with purple illumination.

4. MAINTENANCE

To ensure the longevity and optimal performance of your ROCCAT Kova mouse, follow these maintenance guidelines:

- **Cleaning:** Use a soft, dry, lint-free cloth to wipe down the mouse. For stubborn dirt, slightly dampen the cloth with water or a mild cleaning solution. Avoid using harsh chemicals or abrasive materials.
- **Sensor Care:** Keep the optical sensor on the underside of the mouse clean and free from dust or debris. Use a cotton swab or compressed air if necessary.
- **Cable Management:** Avoid sharp bends or excessive pulling on the USB cable to prevent damage.

- **Storage:** When not in use, store the mouse in a clean, dry environment away from extreme temperatures.

5. TROUBLESHOOTING

If you encounter issues with your ROCCAT Kova mouse, try the following troubleshooting steps:

- **Mouse Not Responding:**

- Ensure the USB cable is securely connected to your computer.
- Try connecting the mouse to a different USB port.
- Restart your computer.

- **Software Not Detecting Mouse:**

- Ensure ROCCAT Swarm is updated to the latest version.
- Reinstall the ROCCAT Swarm software.
- Check your computer's device manager to see if the mouse is recognized.

- **Tracking Issues:**

- Clean the optical sensor on the bottom of the mouse.
- Ensure you are using the mouse on a suitable mouse pad or surface.
- Adjust DPI settings in the ROCCAT Swarm software.

- **Illumination Problems:**

- Check illumination settings within the ROCCAT Swarm software to ensure lighting is enabled and configured correctly.
- Update mouse firmware via ROCCAT Swarm.

For further assistance, please refer to the official ROCCAT support website or contact their customer service.

6. SPECIFICATIONS

| Feature | Detail |
|-------------------------------|----------------------------------|
| Brand | ROCCAT |
| Model Number | ROC-11-503 |
| Connectivity Technology | USB |
| Movement Detection Technology | Optical |
| DPI (Native/Effective) | 3500 / 7000 (via Overdrive mode) |
| Number of Buttons | 12 (22 with Easy-Shift[+]) |
| Illumination | 16.8M Multicolor RGB |
| Operating System | Windows |
| Item Weight | 5.3 ounces |
| Product Dimensions (LxWxH) | 4.23 x 2.41 x 1.5 inches |

| Feature | Detail |
|---------|---------|
| Color | White |
| Voltage | 5 Volts |

7. WARRANTY AND SUPPORT

Your ROCCAT Kova mouse is covered by a manufacturer's warranty. Please refer to the warranty information provided with your product packaging or visit the official ROCCAT website for detailed terms and conditions.

For technical support, driver downloads, FAQs, and additional product information, please visit the [ROCCAT Store](#) or their dedicated support portal. Keeping your ROCCAT Swarm software updated is crucial for accessing the latest features and ensuring optimal performance.