

GROHE 35015001

GROHE 35015001 Grohsafe Universal Pressure Balance Rough-In Valve Instruction Manual

Model: 35015001 | Brand: GROHE

1. PRODUCT OVERVIEW

The GROHE Grohsafe Universal Pressure Balance Rough-In Valve is engineered to provide a consistent and safe water temperature for your showering experience. This valve actively balances hot and cold water pressure to prevent sudden temperature changes, protecting against scalding and cold shocks. It is designed for durability and reliable performance within your plumbing system.

Key Features:

- 1/2" universal inlets and 1/2" universal outlets for versatile connection.
- Includes a durable Blue Core cartridge for precise temperature control.
- Offers a 265° comfort range for fine-tuning water temperature.
- Equipped with a handle limit stop and integrated check valves.
- Comes with a plug for 3-port installation configurations.
- Includes a metal support bracket for secure mounting.
- Universal connection compatible with 1/2" male threads by copper sweat.
- Features service stops for convenient water shut-off during maintenance.
- Optional extension kit (GROHE part number 47 996 000) is available separately.
- Maximum flow rates: top port 3.7 gpm at 45 psi (14 l/min), bottom port 4.0 gpm at 45 psi (15 l/min).

2. SAFETY INFORMATION

Please read all instructions carefully before installation and use. Failure to follow these instructions may result in property damage, personal injury, or death. Always observe local plumbing and building codes.

- Ensure the main water supply is turned off before beginning any installation or maintenance.

- Wear appropriate personal protective equipment, such as safety glasses and gloves.
- If you are unsure about any part of the installation process, consult a qualified plumber.
- Do not overtighten connections, as this can damage the valve or pipes.
- Test for leaks thoroughly after installation is complete and before closing walls.

3. COMPONENTS

The GROHE 35015001 Grohsafe valve consists of the following primary components:

- **Valve Body:** The main brass housing with inlet and outlet ports.
- **Blue Core Cartridge:** The internal mechanism responsible for pressure balancing and temperature control.
- **Metal Support Bracket:** Used for securing the valve during rough-in installation.
- **Service Stops:** Integrated valves to shut off water supply directly to the rough-in valve for maintenance.
- **3-Port Plug:** Included for installations where a third port (e.g., for a tub spout) is not required.

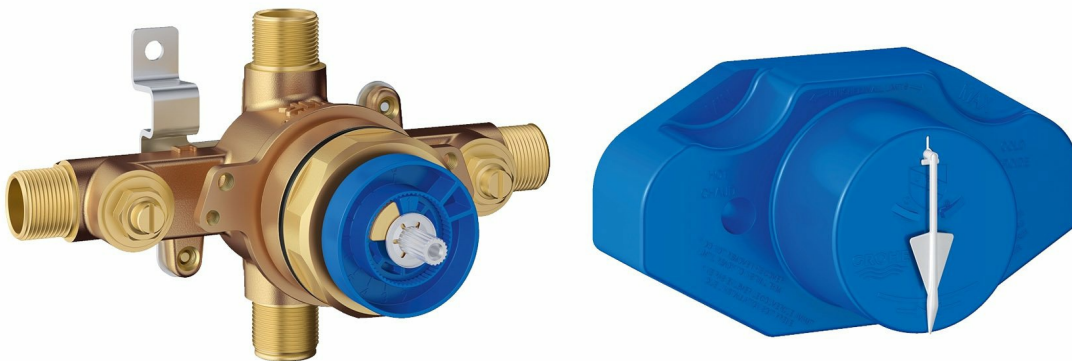


Image 3.1: The GROHE 35015001 Grohsafe Universal Pressure Balance Rough-In Valve body, showing the brass construction and connection points.

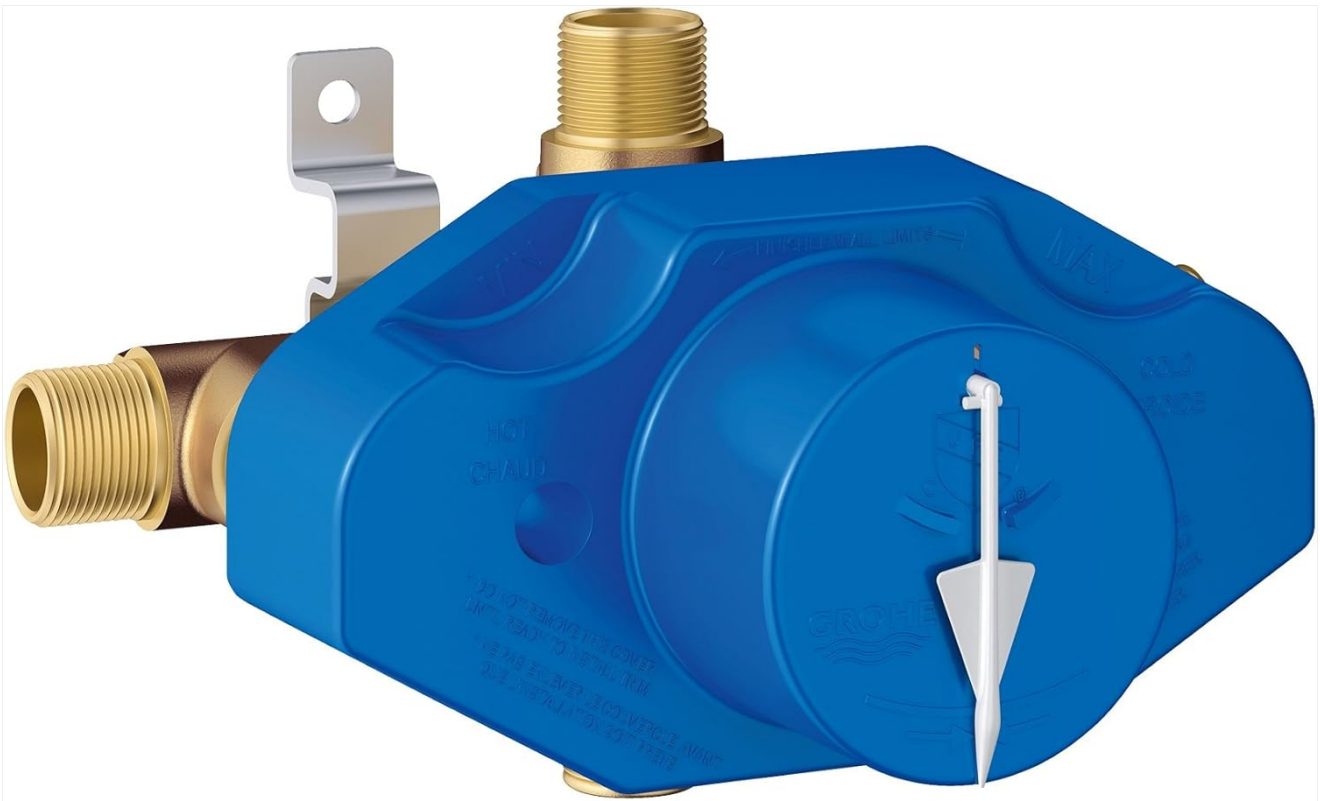


Image 3.2: The GROHE 35015001 Grohsafe valve with its blue protective cover, indicating the rough-in stage.

4. INSTALLATION

This section provides general guidelines for installing the GROHE 35015001 Grohsafe Universal Pressure Balance Rough-In Valve. Always refer to the detailed installation instructions provided with your specific product packaging for complete and accurate steps.

Preliminary Steps:

1. **Turn off Water Supply:** Locate the main water shut-off valve for your home and turn it off. Open a faucet at the lowest point in your house to drain the lines.
2. **Prepare Rough-In Area:** Ensure the wall cavity is clear and properly sized for the valve. The metal support bracket should be used to secure the valve to a stud or blocking.

Connecting the Valve:

3. **Identify Ports:** The valve has clearly marked inlet ports for hot (H) and cold (C) water, and outlet ports for the shower (SHR) and potentially a tub (TUB).
4. **Connect Water Lines:** Connect the 1/2" hot and cold water supply lines to the corresponding inlet ports using copper sweat connections.
5. **Connect Outlet Lines:** Connect the 1/2" shower outlet line to the SHR port. If a tub spout is not being used, ensure the TUB port is properly plugged with the included plug.
6. **Secure Valve:** Use the provided metal support bracket to firmly attach the valve to the framing, ensuring it is plumb and at the correct depth for your finished wall.

Post-Installation Check:

7. **Test for Leaks:** Slowly turn the main water supply back on and carefully inspect all connections for any signs of leaks. Address any leaks immediately.
8. **Install Trim:** Once the rough-in valve is installed and tested, proceed with installing the decorative trim kit

(sold separately) according to its specific instructions.

Your browser does not support the video tag.

Video 4.1: An official video demonstrating the installation process for the Grohe 35015001 Grohsafe Universal Pressure Balance Rough-In Valve. This video provides visual guidance for proper setup and connection.

5. OPERATION

The GROHE Grohsafe Universal Pressure Balance Rough-In Valve operates by maintaining a constant water temperature, even when other water sources in the home are used. This is achieved by dynamically adjusting the mix of hot and cold water to compensate for pressure fluctuations.

Temperature Adjustment:

- The valve's Blue Core cartridge allows for a 265° comfort range, enabling precise temperature selection via the shower trim handle (sold separately).
- A handle limit stop is integrated into the valve to prevent the handle from being turned to excessively hot temperatures. This limit stop is typically adjusted during the installation of the shower trim kit, not the rough-in valve itself. Refer to your trim kit's instruction manual for details on adjusting the hot water limit.

6. MAINTENANCE

Regular maintenance helps ensure the longevity and optimal performance of your GROHE Grohsafe valve.

Cleaning:

- The rough-in valve itself requires minimal cleaning once installed behind the wall.
- For the visible trim components, clean with a soft cloth and mild soap. Avoid abrasive cleaners or harsh chemicals that can damage the finish.

Cartridge Replacement:

- Over time, the Blue Core cartridge may wear out, leading to issues such as leaks, inconsistent temperature, or difficulty in adjusting water flow.
- To replace the cartridge, first turn off the water supply to the valve using the integrated service stops.
- Remove the shower trim handle and faceplate to access the cartridge. Follow the specific instructions provided with your replacement cartridge for removal and installation.
- Ensure the replacement cartridge is a genuine GROHE part to maintain performance and warranty.

7. TROUBLESHOOTING

If you encounter issues with your GROHE 35015001 Grohsafe valve, refer to the common problems and solutions below. For complex issues, contact GROHE customer support or a qualified plumber.

Problem	Possible Cause	Solution
No water flow or very low flow.	Main water supply off; service stops closed; debris in cartridge; clogged showerhead.	Check main water supply; ensure service stops are fully open; clean or replace cartridge; clean showerhead.

Problem	Possible Cause	Solution
Water temperature is too hot or too cold, or fluctuates significantly.	Hot water limit stop incorrectly set; faulty pressure balance cartridge; insufficient hot/cold water supply.	Adjust the hot water limit stop on the trim kit (refer to trim manual); inspect or replace the Blue Core cartridge; check water heater and supply lines.
Leakage from the valve or connections.	Loose connections; damaged O-rings or seals; cracked valve body; faulty cartridge.	Turn off water at service stops; tighten connections; inspect and replace O-rings/seals; replace cartridge if necessary. If valve body is cracked, professional replacement is required.

8. SPECIFICATIONS

Specification	Detail
Brand	GROHE
Model Number	35015001
Material	Brass
Item Weight	3.2 Pounds
Item Dimensions (L x W x H)	7.2 x 2.95 x 17.09 inches
Exterior Finish	Brass
Inlet Connection Size	0.5 Inches
Inlet Connection Type	Sweat
Outlet Connection Size	0.5 Inches
Outlet Connection Type	Sweat
Maximum Operating Pressure	45 Pound per Square Inch
Number of Ports	3
Valve Type	Pressure Balance Valves

9. WARRANTY AND SUPPORT

GROHE products are manufactured to the highest standards and undergo rigorous quality control. This product is typically covered by a Limited Lifetime Warranty, which protects against defects in material and workmanship under normal use. For specific warranty terms and conditions, please refer to the warranty documentation included with your product or visit the official GROHE website.

For technical assistance, replacement parts, or warranty claims, please contact GROHE customer support. You can find contact information and additional resources on the [official GROHE store page](#) or their main corporate website.

