

Nintendo TBD

Nintendo Dragon Quest VII: Fragments of the Forgotten Past - Nintendo 3DS Instruction Manual

Model: TBD

1. SETUP

This section guides you through the initial steps to begin playing Dragon Quest VII: Fragments of the Forgotten Past on your Nintendo 3DS system.

1.1 Inserting the Game Card

1. Ensure your Nintendo 3DS system is powered off.
2. Locate the game card slot on your Nintendo 3DS system.
3. Insert the Dragon Quest VII game card into the slot until it clicks into place.
4. Power on your Nintendo 3DS system. The game icon should appear on the HOME Menu.

1.2 Starting a New Game

- Select the Dragon Quest VII icon from the HOME Menu to launch the game.
- Follow the on-screen prompts to begin a new adventure. You will be guided through character naming and initial story sequences.

2. OPERATING INSTRUCTIONS

Understand the core mechanics and controls for navigating the world, engaging in combat, and managing your party.

2.1 Basic Controls

Control	Function
Circle Pad	Move character, navigate menus

Control	Function
A Button	Confirm selection, talk to people, examine objects
B Button	Cancel selection, run (hold)
X Button	Open main menu
Y Button	Rotate camera (in some areas)
L/R Buttons	Cycle through menu tabs, camera adjustment
Touch Screen	Map display, quick menu access

2.2 World Exploration

Explore various towns, dungeons, and the overworld. The bottom screen often displays a map to aid navigation. Interact with non-player characters (NPCs) to gather information and advance the story.

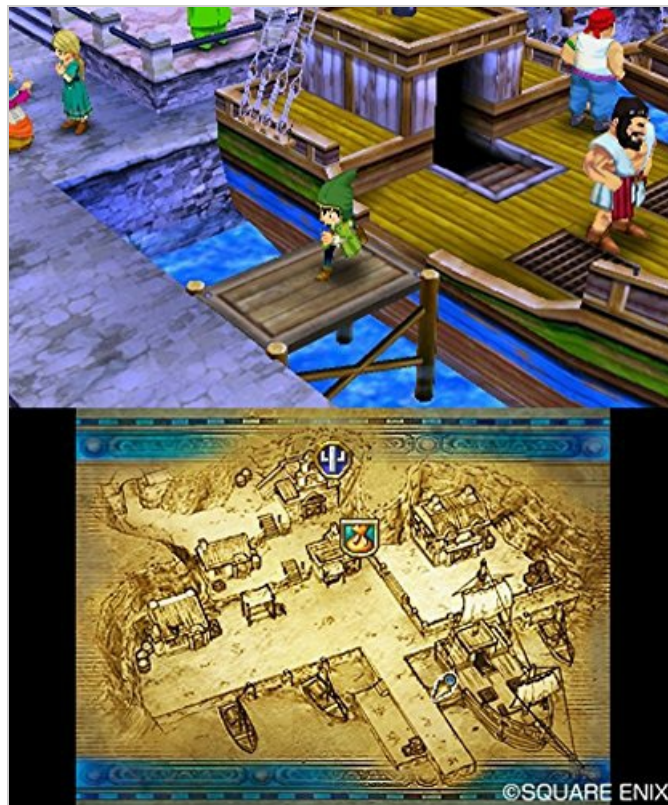


Image: A character stands on a wooden dock in a bustling port town, with a detailed map of the town displayed on the Nintendo 3DS bottom screen, indicating various points of interest.



Image: Three party members, including the main protagonist, run along a dirt path through a vibrant green field. Small, colorful monsters are visible in the distance, indicating an explorable overworld.

2.3 Combat System

Combat in Dragon Quest VII is turn-based. When you encounter enemies, the game transitions to a battle screen. You will issue commands to each party member, choosing actions such as Attack, Spell, Skill, Item, or Defend. Pay attention to enemy weaknesses and your party's strengths.



Image: The player's party stands in a dimly lit dungeon corridor, adorned with torches and ancient architecture. This scene suggests exploration within a dangerous area where combat encounters are frequent.

2.4 Saving Your Game

To save your progress, visit a church in any town and speak to the priest. Saving regularly is recommended to avoid losing progress.

2.5 Class System

After progressing through the story, you will unlock the ability to change character classes. Each class offers unique abilities and stat bonuses. Experiment with different classes to find the optimal party composition for various challenges.



Image: Characters are seen walking through a town square with a bridge, while the bottom screen displays a detailed map of the town, highlighting various buildings and pathways.

3. MAINTENANCE

Proper care of your game card and Nintendo 3DS system ensures optimal performance and longevity.

3.1 Game Card Care

- Keep the game card clean and free from dust and debris. Store it in its original case or a protective holder when not in use.
- Avoid touching the metal connectors on the back of the game card.
- Do not expose the game card to extreme temperatures or direct sunlight.

3.2 Nintendo 3DS System Care

- Refer to your Nintendo 3DS system's instruction manual for detailed cleaning and maintenance procedures.
- Ensure the system's software is up to date for the best gaming experience.

4. TROUBLESHOOTING

If you encounter issues while playing, consult the following common troubleshooting steps.

4.1 Game Not Loading

- Ensure the game card is fully inserted into the Nintendo 3DS system.
- Clean the game card's metal connectors with a soft, dry cloth.
- Restart your Nintendo 3DS system.
- Try another game card to determine if the issue is with the system or the game card.

4.2 Game Freezing or Crashing

- Save your game frequently to minimize data loss.
- Ensure your Nintendo 3DS system has sufficient battery charge.
- Close any other applications running on your Nintendo 3DS system.
- If the issue persists, try restarting the system and the game.

4.3 Save Data Issues

- Ensure you are saving your game correctly by speaking to the priest in a church.
- Do not remove the game card while the system is saving data.
- If save data becomes corrupted, it may be unrecoverable. Regular saving in multiple slots (if available) is a good practice.

5. SPECIFICATIONS

- **Title:** Dragon Quest VII: Fragments of the Forgotten Past
- **Platform:** Nintendo 3DS
- **Publisher:** Nintendo
- **Developer:** Square Enix
- **Release Date:** September 16, 2016
- **ESRB Rating:** Everyone 10+ (E10+)
- **Compatible Models:** Nintendo 2DS, Nintendo 3DS, Nintendo 3DS XL, Nintendo DS, Nintendo DS Lite, Nintendo DSi, Nintendo DSi XL
- **Item Model Number:** TBD
- **UPC:** 045496743703

Note: While the product data lists compatibility with Nintendo DS, DS Lite, DSi, and DSi XL, Dragon Quest VII: Fragments of the Forgotten Past is a Nintendo 3DS exclusive title and requires a Nintendo 3DS family system to play.

6. WARRANTY AND SUPPORT

For warranty information, technical support, or customer service regarding your Nintendo 3DS system or Dragon Quest VII: Fragments of the Forgotten Past, please contact Nintendo Customer Support.

- **Nintendo Support Website:** www.nintendo.com/support/
- **Phone Support:** Refer to the Nintendo support website for regional contact numbers.
- **Warranty:** Product warranties are typically covered by Nintendo. Please retain your proof of purchase.

Note: This manual provides general guidance. Specific details may vary. Always refer to the official Nintendo support channels for the most accurate and up-to-date information.

