

Mopar 68163849AB

Mopar 10 Year/150,000 Mile 50/50 Premixed Antifreeze/Coolant

PART NO. 68163849AB (MS.90032)

1. Product Overview

This manual provides instructions for the Mopar 10 Year/150,000 Mile 50/50 Premixed Antifreeze/Coolant, Part Number 68163849AB (MS.90032). This product is a prediluted solution designed to protect your vehicle's cooling system. It meets ASTM D3306 - Type 3 standards and is suitable for a wide range of Mopar vehicles.



Image 1: Front of Mopar 1 Gallon Antifreeze/Coolant bottle. The label indicates 'ANTIFREEZE / COOLANT 50/50 PREDILUTED DO NOT ADD WATER' and '10 YEAR EMBITTERED MS.90032'.

2. Safety Information

WARNING: Harmful or fatal if swallowed. Contains an embittering agent. Keep out of reach of children and animals. Avoid contact with eyes and skin. In case of contact, flush with water immediately. Consult a physician if irritation persists or if swallowed. Dispose of according to local regulations.

Always wear appropriate personal protective equipment, such as gloves and eye protection, when handling automotive fluids. Ensure the engine is cool before opening the cooling system to prevent burns from hot fluid or steam.

3. Vehicle Compatibility

This Mopar Antifreeze/Coolant is specifically formulated for various Chrysler, Dodge, Jeep, Ram, Alfa Romeo, and Fiat vehicles. Refer to your vehicle's owner's manual for specific coolant requirements. This product is compatible with the following models:

- 2017-2020 ALFA ROMEO GIULIA
- 2018-2020 ALFA ROMEO STELVIO
- 2017-2019 CHRYSLER PACIFICA
- 2016 CHRYSLER TOWN & COUNTRY, DODGE DART
- 2016-2019 CHRYSLER 300, DODGE JOURNEY, RAM 1500, 2500, 4500, 5500
- 2015-2019 DODGE CHALLENGER
- 2016-2020 DODGE CHARGER, GRAND CARAVAN, JEEP COMPASS
- 2016-2021 DODGE DURANGO, RAM PROMASTER 1500, 2500, 3500
- 2013, 2016-2018 FIAT 500
- 2016-2019, 2021 JEEP CHEROKEE/GRAND CHEROKEE
- 2015-2021 JEEP WRANGLER
- 2015-2020 RAM 3500

Important: Do not mix different types of coolants unless specified by the manufacturer, as this can lead to system damage.

4. Setup and Initial Fill

1. **Ensure Engine is Cool:** Never open the cooling system when the engine is hot. Allow the engine to cool completely.
2. **Locate Radiator Cap and Reservoir:** Identify your vehicle's radiator cap and coolant reservoir.
3. **Drain System (if performing a full flush):** Completely drain the cooling system by opening the valve at the bottom of the radiator. Consult your owner's manual for specific draining procedures.
4. **Flush System (if necessary):** To remove sediment or old coolant, flush the radiator with water until clear. Run the engine with the heater on, then drain again. Repeat until the system is clean.
5. **Refill System:** Close the drain valve. Fill the cooling system with Mopar 50/50 Premixed Antifreeze/Coolant. Do not add water.
6. **Bleed Air:** Run the engine with the heater on high to circulate the coolant and remove any air pockets. Top off the reservoir as needed.



Image 2: Back of Mopar 1 Gallon Antifreeze/Coolant bottle showing detailed instructions for flushing, refilling, and topping off.

5. Operating and Maintenance

This Mopar coolant is prediluted 50/50, meaning it is ready to use directly from the bottle. No additional water is required. Regularly check your coolant level in the reservoir. The fluid level should be between the 'MIN' and 'MAX'

marks when the engine is cool.

Top-Off Instructions:

- Ensure the engine is cool.
- Remove the coolant reservoir cap.
- Add Mopar 50/50 Premixed Antifreeze/Coolant directly to the reservoir until the fluid level reaches the 'MAX' mark.
- Replace the cap securely.

The coolant is designed for 10 years or 150,000 miles. However, regular inspection of the coolant condition and level is recommended as part of routine vehicle maintenance.





Image 3: Side of Mopar 1 Gallon Antifreeze/Coolant bottle showing volume measurements in quarts and liters.

6. Troubleshooting

- **Low Coolant Level:** If the coolant level is consistently low, inspect the cooling system for leaks. Address any leaks promptly.
- **Engine Overheating:** If the engine overheats, pull over safely and allow the engine to cool. Check the coolant level and inspect for visible leaks or damage to hoses and radiator. Consult a qualified mechanic if the issue persists.
- **Coolant Color Change:** A significant change in coolant color (e.g., rusty appearance) may indicate contamination or corrosion. A full system flush and refill may be necessary.

7. Specifications


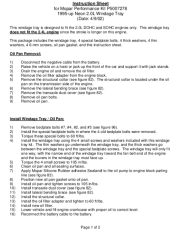

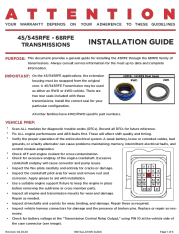

Feature	Detail
Item Name	MOPAR Antifreeze/Coolant 50/50 Prediluted MS.90032
Part Number	68163849AB
Brand	MOPAR
Formulation	50/50 Prediluted (Do Not Add Water)
Protection Range	-34 °F (-37 °C) to 265 °F (129 °C)
Service Life	10 Year / 150,000 Miles
Standard Met	ASTM D3306 - Type 3
Package Quantity	1 Gallon (3.78 L)
Item Weight	9.24 pounds

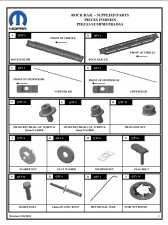
Feature	Detail
Product Dimensions	12 x 7.5 x 3.5 inches

8. Warranty and Support

For warranty information or technical support regarding your Mopar Antifreeze/Coolant, please refer to your vehicle's official Mopar documentation or contact an authorized Mopar service center. You can also visit the official Mopar website for further assistance.

Related Documents - 68163849AB

	<p>Mopar 572 CID Hemi Crate Engine Installation Instructions</p> <p>Comprehensive installation guide for the Mopar 572 CID Hemi Crate Engine (Part Numbers P5155429 and P5155431), covering pre-installation checks, engine mounting, transmission compatibility, initial startup procedures, break-in, and torque specifications. Includes details on engine balance, cooling systems, ignition, and warranty information.</p>
	<p>Mopar Performance P5007278 Windage Tray Installation Instructions</p> <p>Comprehensive installation guide for the Mopar Performance P5007278 Windage Tray, designed for 1995-up 2.0L DOHC and SOHC Neon engines. This document details the steps for oil pan removal and the subsequent installation of the windage tray, including necessary hardware and torque specifications.</p>
	<p>MOPAR Manuals on CD-ROM - Partial Catalog</p> <p>A partial catalog of MOPAR service manuals and master parts books available on CD-ROM from MuscleCARS, covering Chrysler, Plymouth, Dodge, DeSoto, and AMC vehicles from 1914 to the late 1980s and early 1990s.</p>
	<p>45/545RFE & 68RFE Automatic Transmission Installation Guide</p> <p>Comprehensive installation guide for 45/545RFE, 68RFE, 65RFE, and 66RFE automatic transmissions. Covers vehicle preparation, pre-installation checks, fluid filling, programming, and learning procedures.</p>
	<p>Mopar Performance Parts Catalog for Jeep and Ram Vehicles</p> <p>This catalog features a comprehensive range of Mopar performance parts for Jeep and Ram vehicles, including engine components, drivetrain, suspension upgrades, exhaust systems, air intake systems, and exterior body parts. It provides detailed product descriptions, part numbers, and application information.</p>



[Mopar Rock Rail Installation Instructions](#)

Comprehensive guide for installing Mopar Rock Rails, including a list of supplied parts, required tools, and detailed step-by-step instructions with textual descriptions of diagrams. This document is intended for vehicle owners and technicians.