



Manuals.plus /

› VIVOSUN /

› VIVOSUN S448 4x4 Grow Tent Instruction Manual (48"x48"x80")

VIVOSUN S448

VIVOSUN S448 4x4 Grow Tent Instruction Manual

Model: S448 (48"x48"x80")

[Introduction](#) [Safety](#) [Components](#) [Setup](#) [Operation](#) [Maintenance](#) [Troubleshooting](#)
[Specifications](#) [Warranty & Support](#)

1. INTRODUCTION

This manual provides detailed instructions for the assembly, operation, and maintenance of your VIVOSUN S448 4x4 Grow Tent. Designed for hydroponics and indoor plant cultivation, this tent creates an optimized environment for plant growth by managing light, temperature, and humidity. Please read this manual thoroughly before setup and use to ensure proper function and longevity of your product.

The VIVOSUN S448 Grow Tent features a robust design with high-quality materials to ensure durability and efficiency. Key features include:

- **Light-Blocking Design:** Constructed with 600D Oxford canvas, reinforced PE layer, and 100% reflective Mylar walls to prevent light leakage and maximize light utilization.
- **Durable Construction:** Features robust metal poles, top bars supporting up to 100 lbs, and tool-free corner connectors for a secure structure.
- **Enhanced Accessibility:** Equipped with a transparent observation window, strategically placed lower window for heat dissipation, and multiple doors with smooth-gliding SBS zippers.
- **Easy Maintenance:** Includes a removable floor tray for convenient cleaning and upkeep.
- **Versatile Integration:** Multiple openings for duct fans, lamps, and electrical cords, along with an internal tool organizer.



Image 1.1: Fully assembled VIVOSUN S448 Grow Tent with internal setup.

2. SAFETY INFORMATION

Please observe the following safety precautions to prevent injury or damage to the product and your environment:

- **Assembly:** Assemble the tent on a flat, stable surface. Ensure all poles and connectors are securely fastened before placing the tent fabric.

- **Weight Capacity:** Do not exceed the maximum weight capacity of 100 lbs for the top hanging bars. Distribute weight evenly.
- **Electrical Safety:** When installing electrical equipment (lights, fans), ensure all wiring is properly insulated and routed through designated cable ports. Avoid pinching wires. Use ground fault circuit interrupter (GFCI) outlets for all electrical connections in damp environments.
- **Ventilation:** Ensure adequate ventilation to prevent heat buildup and maintain optimal air quality for plants. Do not block intake or exhaust ports.
- **Water Management:** The floor tray is designed to contain minor spills. Regularly check for leaks and address them promptly to prevent water damage to surrounding areas or electrical components.
- **Stability:** Periodically check the tent's frame for stability, especially after moving or adjusting equipment.
- **Children and Pets:** Keep children and pets away from the grow tent, especially when electrical equipment is in operation.

3. PACKAGE CONTENTS

Verify that all components are present and undamaged before beginning assembly. If any parts are missing or damaged, please contact VIVOSUN customer support.

- Tent Fabric (600D Oxford with Mylar lining)
- Metal Frame Poles (various lengths, typically labeled A, B, C, D)
- Corner Connectors (tool-free)
- Top Hanging Bars
- Removable Floor Tray
- Hanging Straps (2 included)
- Instruction Manual

Specifications

Model: S448

Medium
Size

16 ft²
Coverage

106 ft³
Volume

100 lbs.
Weight Capacity

16mm Steel
Frame

**4-8 Plants in
3-Gallon Pots**
Plant Capacity



Image 3.1: Overview of VIVOSUN S448 Grow Tent specifications and key features.

4. SETUP INSTRUCTIONS

Follow these steps for quick and effortless assembly of your VIVOSUN S448 Grow Tent:

1. **Prepare the Area:** Choose a clean, flat, and stable location for your grow tent. Ensure there is enough space around the tent for assembly and future access.
2. **Assemble the Base Frame:** Connect the shortest poles (typically labeled 'A' or 'B') with the corner connectors to form the base rectangle. Ensure all connections are firm.
3. **Install Vertical Poles:** Insert the vertical poles into the corner connectors of the base frame.
4. **Assemble the Top Frame:** Connect the remaining horizontal poles with the corner connectors to form the top rectangle. Carefully lift and place this top frame onto the vertical poles.
5. **Attach Top Hanging Bars:** Secure the top hanging bars across the top frame. These bars are designed to support lighting, ventilation, and other equipment.
6. **Drape the Tent Fabric:** Carefully unfold the tent fabric and drape it over the assembled frame. Start from the top and work your way down, ensuring the fabric is correctly oriented.
7. **Zip Up the Tent:** Once the fabric is draped, begin zipping up the tent. The upgraded SBS zippers are

designed for smooth operation. Ensure the fabric is not caught in the zipper.

- 8. Insert Floor Tray:** Place the removable floor tray at the bottom of the tent. This tray helps contain spills and makes cleaning easier.
- 9. Install Accessories:** Use the provided hanging straps to secure carbon filters, lights, or other equipment to the top hanging bars. Route electrical cords and ducting through the designated ports.

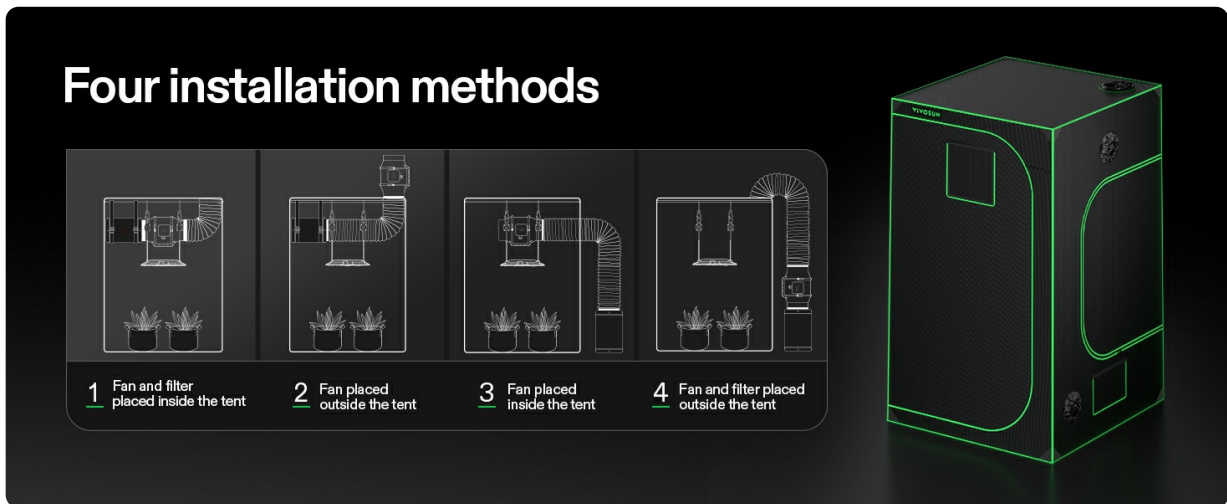


Image 4.1: Various configurations for fan and filter placement.

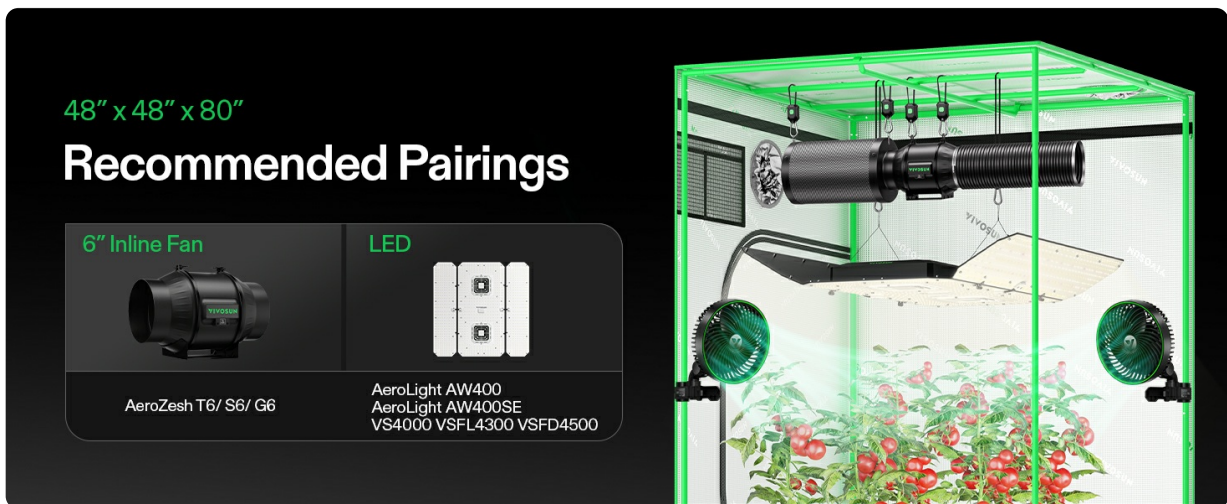


Image 4.2: Recommended equipment pairings for optimal performance.

5. OPERATING INSTRUCTIONS

Once assembled, your VIVOSUN S448 Grow Tent provides a controlled environment for your plants. Consider the following for optimal operation:

- Light Management:** The 100% reflective Mylar interior ensures maximum light utilization. Ensure your grow lights are positioned correctly for even light distribution across all plants. The tent's design effectively blocks external light, creating a lightproof environment.
- Ventilation and Airflow:** Utilize the multiple openings for duct fans and carbon filters to manage air intake and exhaust. Proper ventilation is crucial for temperature regulation, humidity control, and providing fresh CO₂ to your plants. The lower window can assist in heat dissipation.
- Observation:** The transparent plastic window allows for easy observation of your plants without needing to open the tent, thus minimizing disturbance to the internal environment. The window cover is secured with hook and loop fasteners.

- **Cable Management:** Use the designated slots for cable management to keep electrical cords organized and prevent hazards.
- **Environmental Control:** Monitor temperature and humidity levels inside the tent using appropriate sensors. Adjust ventilation and other equipment as needed to maintain ideal conditions for your specific plants.

Image 5.1: Detailed view of tent features for observation and cable management.

6. MAINTENANCE

Regular maintenance ensures the longevity and optimal performance of your grow tent:

- **Cleaning the Interior:** The 100% reflective Mylar interior can be wiped clean with a damp cloth and mild detergent. Avoid abrasive cleaners that could damage the reflective surface.
- **Floor Tray:** The removable floor tray should be emptied and cleaned regularly to prevent water accumulation, mold growth, and pest issues.
- **Zippers:** Periodically check the SBS zippers for smooth operation. If they become stiff, a small amount of zipper lubricant can be applied. Avoid forcing stuck zippers.
- **Frame Inspection:** Annually inspect the metal frame poles and corner connectors for any signs of wear, corrosion, or damage. Ensure all connections remain secure.
- **Fabric Inspection:** Check the tent fabric for any tears, punctures, or signs of light leakage. Small holes can often be repaired with specialized tent repair tape.
- **Ventilation Ports:** Keep ventilation ports clear of debris and ensure drawstrings or covers are functioning correctly to maintain light and air seals.

7. TROUBLESHOOTING

Problem	Possible Cause	Solution
Light leaks from zippers or seams.	Zippers not fully closed, fabric stretched, minor manufacturing variations.	Ensure zippers are fully closed. Adjust fabric tension. Small pinholes are often negligible; for larger leaks, use light-blocking tape or contact support.
Tent frame is unstable or wobbly.	Poles not fully inserted into connectors, connectors not fully seated.	Disassemble and reassemble affected sections, ensuring all poles are firmly seated in the connectors. Place on a level surface.
Difficulty zipping/unzipping.	Fabric caught in zipper, zipper mechanism dirty or dry.	Gently pull fabric away from zipper teeth. Clean zipper with a brush and apply a small amount of zipper lubricant (e.g., beeswax or silicone spray).
Excessive heat buildup inside the tent.	Insufficient ventilation, powerful lights, high ambient room temperature.	Increase exhaust fan speed, add an intake fan, open lower ventilation window, ensure ambient room temperature is suitable. Consider reducing light intensity or raising lights.
High humidity levels.	Poor ventilation, overwatering, high ambient humidity.	Improve airflow with exhaust and circulation fans. Adjust watering schedule. Consider a dehumidifier if ambient humidity is consistently high.

8. SPECIFICATIONS

Feature	Detail
Brand	VIVOSUN
Model Number	S448 (304113-S)
Product Dimensions	48"L x 48"W x 80"H
Item Weight	28.4 Pounds
Frame Material	Metal (16mm Pipe Diameter, 0.8mm Thickness)
Inner Material	Polyethylene Terephthalate (PET) / 100% Reflective Mylar
Outer Fabric	600D Oxford Canvas
Color	Black
Top Bar Support Capacity	Up to 100 lbs
Recommended Light Source Wattage	400 Watts (general guideline)
Plant Capacity	4-8 plants in 3-gallon pots (approximate)
UPC	742920469917

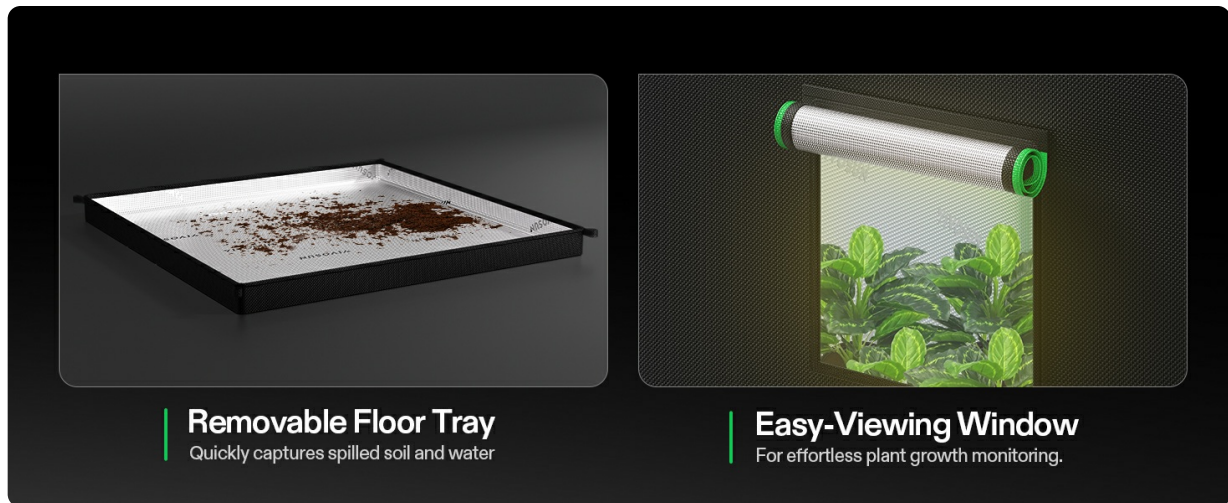


Image 8.1: Illustration of the tent's durable metal frame construction.

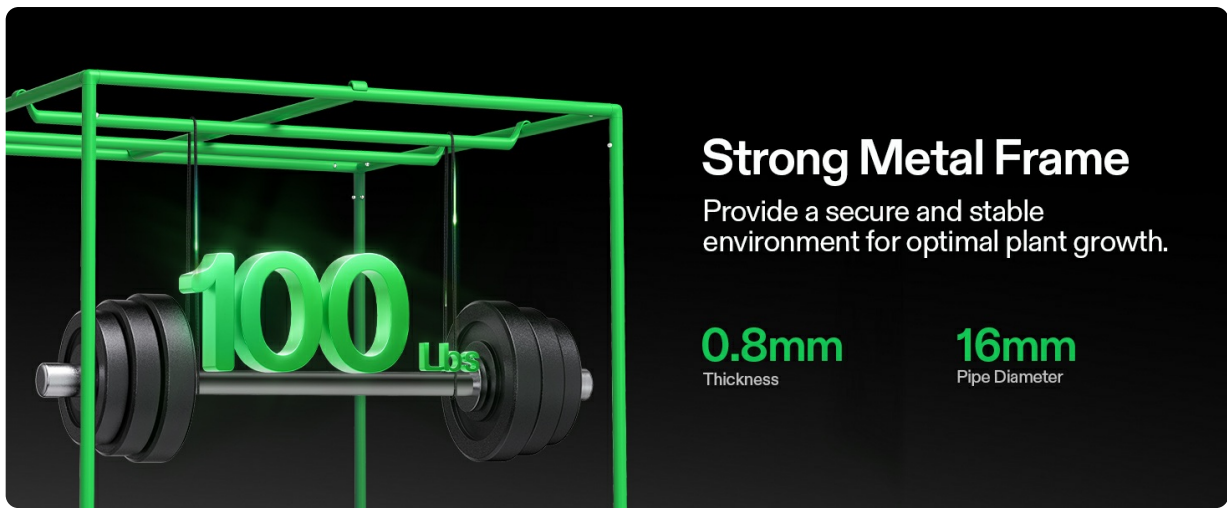


Image 8.2: Cross-section view of the multi-layered tent fabric.

9. WARRANTY AND CUSTOMER SUPPORT

VIVOSUN products are manufactured to high-quality standards. For specific warranty details regarding your VIVOSUN S448 Grow Tent, please refer to the warranty card included with your purchase or visit the official VIVOSUN website. The standard return policy is 30 days for refund/replacement.

If you encounter any issues, have questions about assembly, operation, or require technical assistance, please contact VIVOSUN customer support. Provide your model number (S448) and purchase date for faster service.

VIVOSUN Official Website: www.vivosun.com

Amazon Store: VIVOSUN Store on Amazon