

Shark AH452

Shark Rocket PowerHead AH452 Vacuum Cleaner User Manual

Model: AH452

IMPORTANT SAFETY INSTRUCTIONS

When using an electrical appliance, basic precautions should always be observed, including the following:

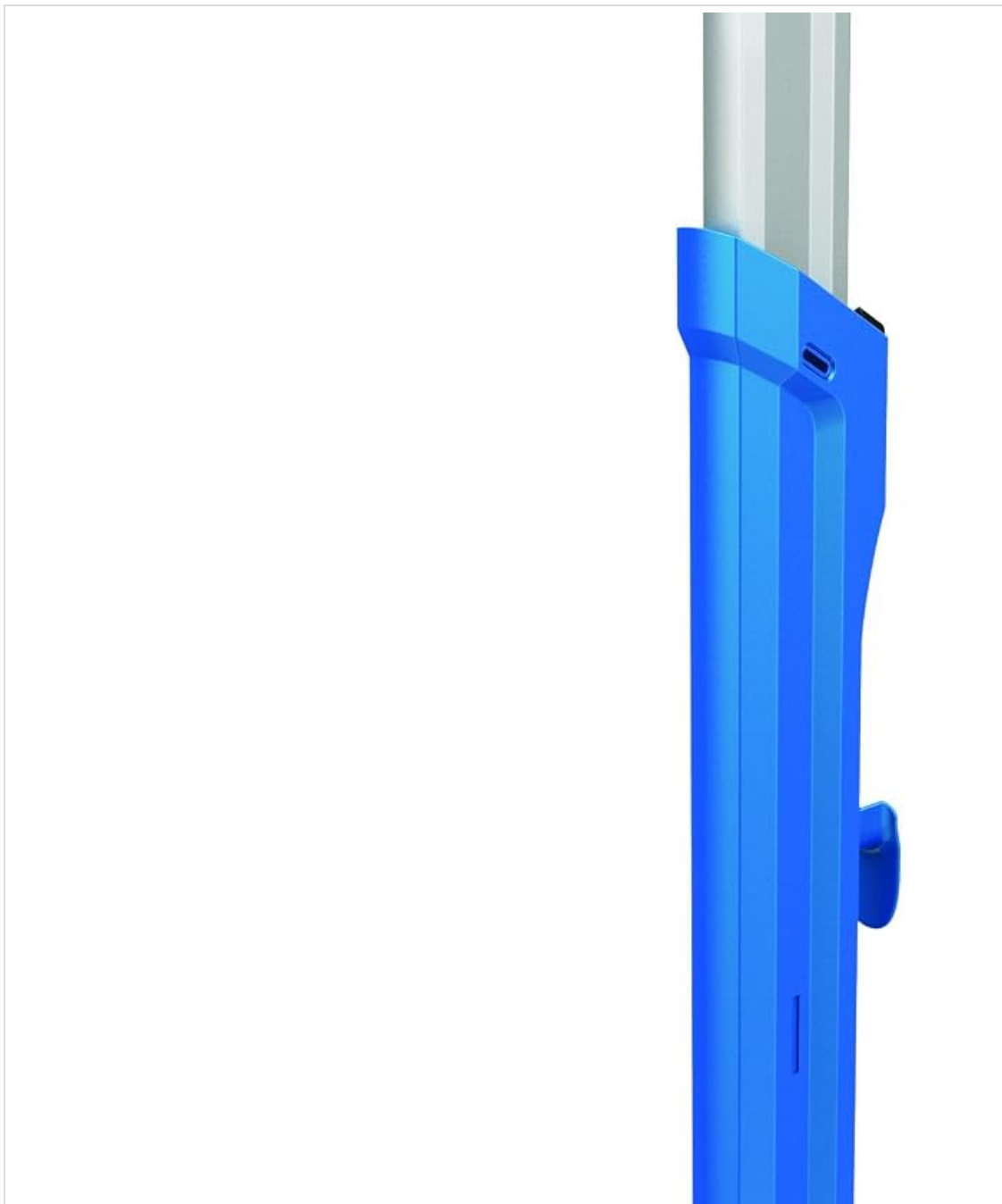
- Read all instructions before using this vacuum cleaner.
- Always unplug the power cord from the electrical outlet when not in use and before servicing.
- Do not use outdoors or on wet surfaces.
- Do not allow to be used as a toy. Close attention is necessary when used by or near children.
- Use only as described in this manual. Use only manufacturer's recommended attachments.
- Do not use with a damaged cord or plug. If the appliance is not working as it should, has been dropped, damaged, left outdoors, or dropped into water, return it to SharkNinja Operating LLC for examination, repair, or adjustment.
- Do not pull or carry by cord, use cord as a handle, close a door on cord, or pull cord around sharp edges or corners. Do not run appliance over cord. Keep cord away from heated surfaces.
- Do not unplug by pulling on cord. To unplug, grasp the plug, not the cord.
- Do not handle plug or vacuum cleaner with wet hands.
- Do not put any object into openings. Do not use with any opening blocked; keep free of dust, lint, hair, and anything that may reduce airflow.
- Keep hair, loose clothing, fingers, and all parts of body away from openings and moving parts.
- Turn off all controls before unplugging.
- Use extra care when cleaning on stairs.
- Do not use to pick up flammable or combustible liquids, such as gasoline, or use in areas where they may be present.
- Do not pick up anything that is burning or smoking, such as cigarettes, matches, or hot ashes.
- Do not use without dust cup and/or filters in place.

PRODUCT OVERVIEW

The Shark Rocket PowerHead AH452 is a lightweight and maneuverable vacuum cleaner designed for versatile floor cleaning. Its innovative design places the powerful motor directly in the cleaning head, making it easy to handle.

Key Features:

- **Interchangeable Brushrolls:** Includes a deep carpet brushroll and a Gentle Touch hard floor brushroll for optimized cleaning on various surfaces.
- **Multi-Surface Cleaning:** Effectively cleans hard floors, deep carpets, and area rugs.
- **Dynamic Steering Technology:** Provides remarkable maneuverability for easy navigation around furniture.
- **Powerful Cleaning:** Delivers strong suction comparable to larger upright vacuums, with a significantly lighter weight.
- **Fingertip Controls:** Conveniently located on the handle for seamless transition between floor types.
- **Pop-Up Dust-Cup:** Features a quick-release foot pedal for easy access and emptying.
- **Easy Brushroll Access:** "Car hood" style access allows for quick removal and rinsing of brushrolls.
- **Adjustable Telescoping Wand:** Customizes to your comfort and facilitates compact storage.



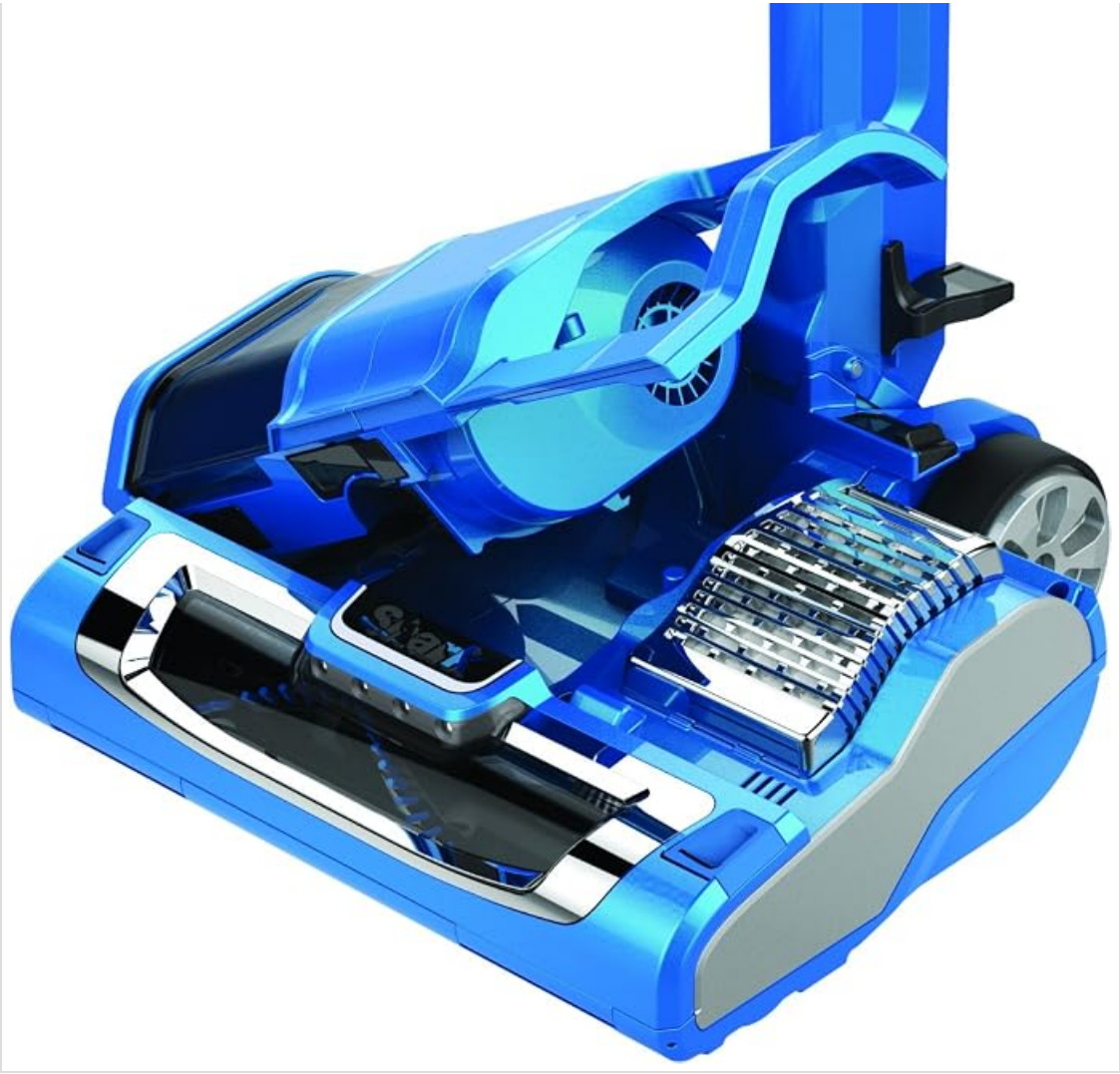


Figure 1: Fully assembled Shark Rocket PowerHead AH452 vacuum cleaner.





Figure 2: Shark Rocket PowerHead AH452 showing the optional on-board brushroll holster attached to the wand.

SETUP AND ASSEMBLY

Follow these steps to assemble your Shark Rocket PowerHead AH452 vacuum cleaner.

1. **Unpack Components:** Carefully remove all components from the packaging. Ensure all parts are present: PowerHead, Telescoping Wand, Handle, Dust Cup, Deep Carpet Brushroll, Gentle Touch Hard Floor Brushroll, and Brushroll Holster.
2. **Attach Wand to PowerHead:** Insert the bottom end of the telescoping wand into the opening on the PowerHead until it clicks securely into place.
3. **Attach Handle to Wand:** Slide the handle onto the top end of the telescoping wand until it locks.
4. **Install Dust Cup:** Align the dust cup with the designated slot on the PowerHead and push down until it

clicks into position.

5. **Insert Brushroll:** Open the brushroll access cover on the PowerHead. Select either the Deep Carpet Brushroll or the Gentle Touch Hard Floor Brushroll and insert it into the PowerHead. Close the access cover until it latches securely.
6. **Optional Brushroll Holster:** If desired, attach the brushroll holster to the telescoping wand for convenient storage of the unused brushroll.

OPERATING INSTRUCTIONS

Learn how to effectively use your Shark Rocket PowerHead AH452 for various cleaning tasks.

Powering On/Off and Surface Selection:

- Plug the power cord into a standard electrical outlet.
- The fingertip controls are located on the handle. Press the power button to turn the vacuum on.
- Select the appropriate surface setting:
 - **Hard Floor Setting:** For bare floors and delicate area rugs. The brushroll spins at a slower speed.
 - **Carpet Setting:** For carpets and rugs. The brushroll spins at a higher speed for deep cleaning.
- To turn off the vacuum, press the power button again.

Adjusting the Telescoping Wand:

The telescoping wand can be adjusted to your preferred height for comfortable operation and easy storage. Locate the release button or lever on the wand and adjust it to the desired length, then secure it in place.

MAINTENANCE

Regular maintenance ensures optimal performance of your Shark Rocket PowerHead AH452.

Emptying the Dust Cup:

Empty the dust cup after each use or when the debris reaches the MAX fill line.

1. Ensure the vacuum is unplugged.
2. Press the quick-release foot pedal located at the base of the dust cup to detach it from the PowerHead.
3. Hold the dust cup over a trash bin. Press the dust cup release button to open the bottom flap and empty the contents.
4. Close the bottom flap securely until it clicks.
5. Reattach the dust cup to the PowerHead until it clicks into place.

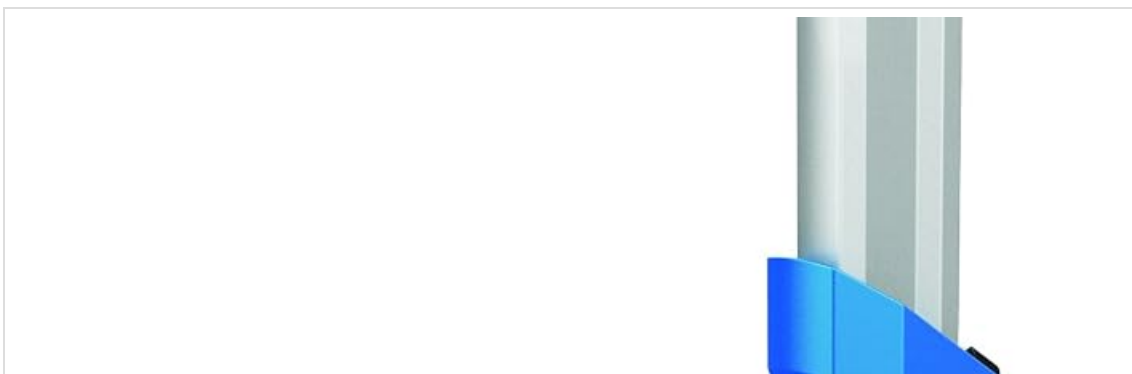




Figure 3: Dust cup detached from the PowerHead for emptying.



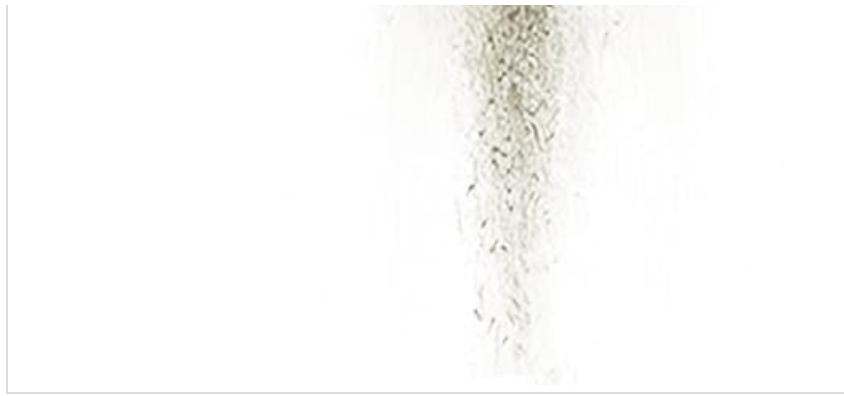


Figure 4: Demonstrating the easy emptying of the dust cup by pressing the release button.

Cleaning the Brushrolls:

The brushrolls should be checked and cleaned regularly to remove hair, string, or debris.

1. Ensure the vacuum is unplugged.
2. Locate the "car hood" style brushroll access cover on the PowerHead. Open the cover.
3. Lift the brushroll out of its compartment.
4. Use scissors to carefully cut away any hair or debris wrapped around the brushroll.
5. The brushrolls are rinsable. Rinse them under cold water and allow them to air dry completely for at least 24 hours before reinserting.
6. Once clean and dry, reinsert the brushroll into the PowerHead and close the access cover until it latches securely.





Figure 5: Brushroll access cover open, revealing the brushroll inside the PowerHead.

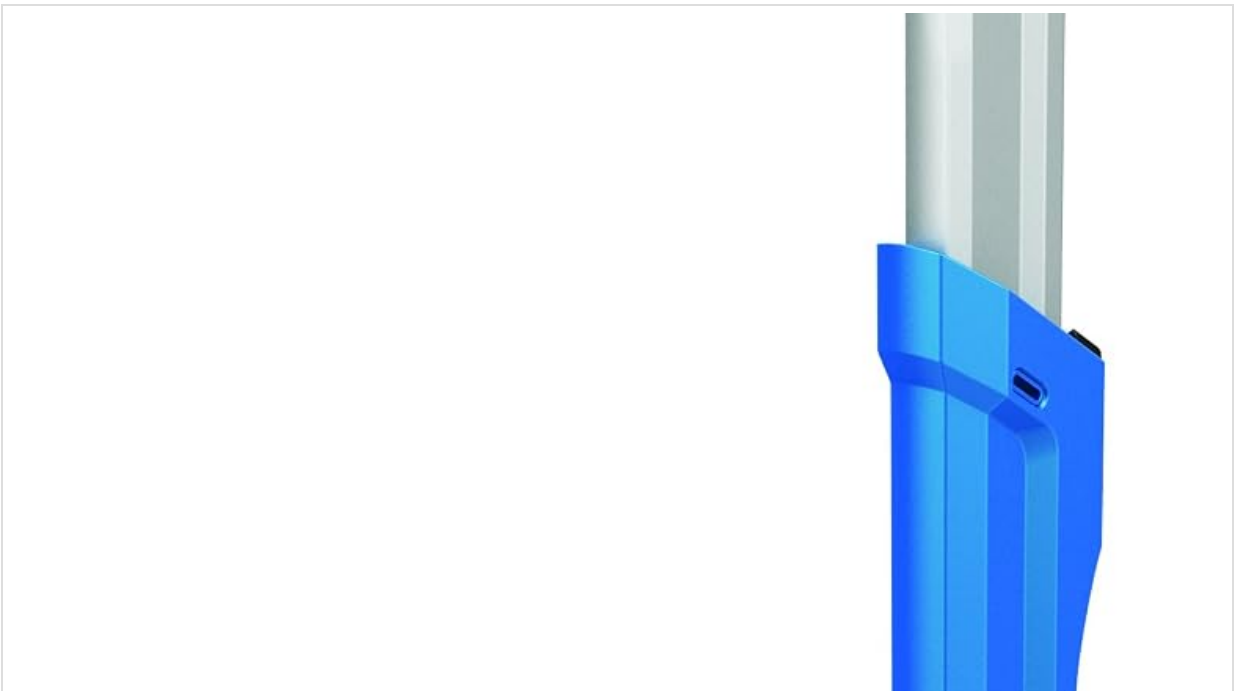




Figure 6: Brushroll removed from the PowerHead for cleaning or replacement.

Cleaning the Foam Filters:

The foam filters should be cleaned regularly to maintain suction power. Rinse them every 3 months or as needed.

1. Ensure the vacuum is unplugged and the dust cup is removed.
2. Locate and remove the foam filters from the dust cup assembly.
3. Rinse the filters thoroughly under cold water until the water runs clear.

4. Squeeze out excess water and allow the filters to air dry completely for at least 24 hours before reinserting. Do not use a hairdryer or other heating methods.
5. Reinsert the dry filters into the dust cup assembly and reattach the dust cup to the PowerHead.

TROUBLESHOOTING

If your Shark Rocket PowerHead AH452 is not performing as expected, consult the following troubleshooting guide.

Vacuum Not Picking Up Debris or Loss of Suction:

- **Check Dust Cup:** Ensure the dust cup is not full and is properly attached. Empty if necessary.
- **Check Filters:** Inspect foam filters for dirt and blockages. Clean and dry them thoroughly as per maintenance instructions.
- **Check for Blockages:** Examine the PowerHead, wand, and hose for any obstructions. Clear any blockages found.
- **Check Brushroll:** Ensure the brushroll is free of tangled hair or debris and is spinning correctly.

Brushroll Not Spinning:

- **Ensure Power:** Make sure the vacuum is plugged in and turned on.
- **Surface Setting:** Verify that the correct surface setting (Hard Floor or Carpet) is selected.
- **Clear Obstructions:** Turn off and unplug the vacuum. Open the brushroll access cover and remove any obstructions preventing the brushroll from spinning.
- **Reinstall Brushroll:** Ensure the brushroll is correctly seated in its compartment and the access cover is securely closed.

Vacuum Shuts Off:

- This vacuum is equipped with a motor protective thermostat. If for some reason your vacuum overheats, the thermostat will automatically turn the unit off.
- Should this occur, perform the following steps:
 - Turn the unit off.
 - Unplug the vacuum.
 - Empty the dust cup and clean filters.
 - Check for blockages in the PowerHead, brushroll, and wand.
 - Allow the unit to cool for a minimum of 45 minutes.
 - Plug in the vacuum and restart.

SPECIFICATIONS

Brand	Shark
Model Name	Shark Rocket PowerHead
Model Number	AH452
Power Source	Corded Electric

Voltage	120 Volts
Wattage	470.00 Watts
Item Weight	9 Pounds
Noise Level	80 Decibels
Filter Type	Foam
Special Features	Bagless, Self-Propelled, Interchangeable Brushrolls
Surface Recommendation	Carpet, Hard Floor
Number of Power Levels	3

WARRANTY INFORMATION

Your Shark Rocket PowerHead AH452 is covered by a limited warranty.

SharkNinja Five-Year (5) Limited Warranty: This warranty applies to purchases made from authorized retailers of SharkNinja Operating LLC. Warranty coverage applies to the original owner and to the original product only and is not transferable. SharkNinja warrants that the unit shall be free from defects in material and workmanship for a period of five (5) years from the date of purchase when it is used under normal household conditions and maintained according to the requirements outlined in this instruction manual.

For full details on warranty coverage and exclusions, please refer to the official warranty documentation provided with your product or contact customer support.

CUSTOMER SUPPORT

For assistance with your Shark Rocket PowerHead AH452, please contact SharkNinja customer service.

- **Customer Service Phone:** 1 (800) 798-7398
- **Hours of Operation:**
 - Monday - Friday: 8 a.m. - 10 p.m. EST
 - Saturday - Sunday: 9 a.m. - 6 p.m. EST

Please have your model number (AH452) and purchase date available when contacting customer service.