



Manuals.plus /

› **Simplicity** /

› Simplicity Sewing Pattern 8020: Misses' Blouse, Hat, and Knit Skirts Instruction Manual

Simplicity 8020

Simplicity Sewing Pattern 8020: Misses' Blouse, Hat, and Knit Skirts

Model: 8020 | Brand: Simplicity

INTRODUCTION

This instruction manual provides detailed guidance for Simplicity Pattern 8020, a creative sportswear design by Karen Fleisch. This pattern allows you to create a unique ensemble including a blouse with sleeve variations, two knit skirts, and a hat.

PATTERN OVERVIEW

This pattern set includes 30 individual pattern pieces for creating the blouse, two skirts, and a hat.

8020 FRONT AND BACK VIEWS

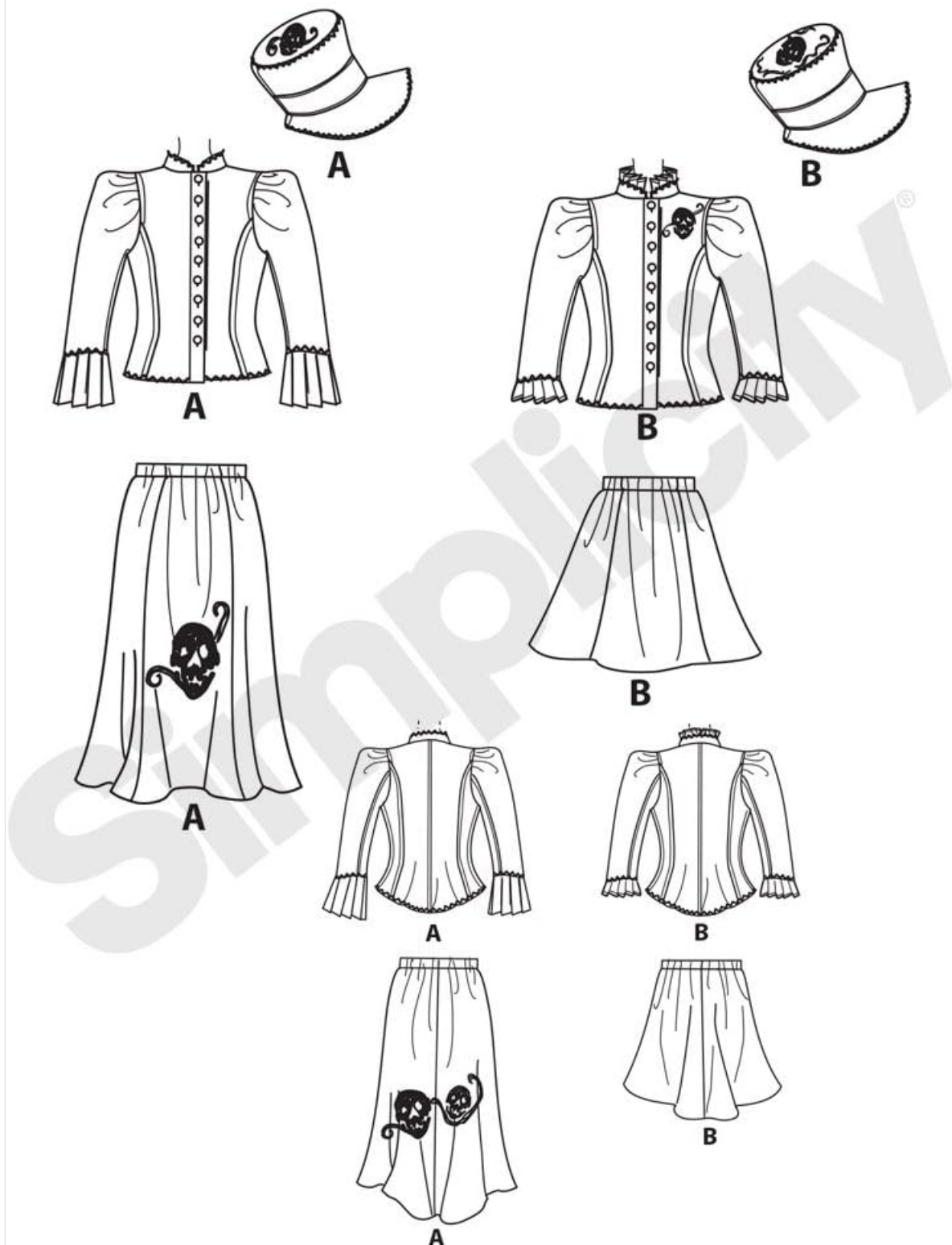


Image: Line drawings illustrating the front and back views of the blouse (A and B), skirts (A and B), and hat (A and B) included in Simplicity Pattern 8020.

MATERIALS REQUIRED

This pattern is designed for fabrics such as broadcloth, cotton types, flannel, lightweight denim, linen types, and knit fabrics. Specific fabric recommendations are provided on the pattern sheet.

Before cutting your fabric, carefully read all instructions. Identify all pattern pieces and ensure you have the correct size.

Fabric Preparation

- Preshrink all fabrics according to manufacturer's instructions to prevent shrinkage after garment completion.
- Press fabrics smoothly before laying out pattern pieces.

Pattern Layout

- Follow the cutting layouts provided on the pattern sheet for your chosen size and fabric width.
- Pin pattern pieces securely to the fabric, ensuring grainlines are correctly aligned.
- Cut fabric pieces accurately.

SEWING INSTRUCTIONS

The pattern includes detailed step-by-step instructions for constructing each garment. Refer to the pattern sheet for specific sewing order and techniques.

General Sewing Tips

- Use a sewing machine needle appropriate for your fabric type (e.g., ballpoint for knits, universal for wovens).
- Always test stitches on a scrap piece of your fabric before sewing the actual garment.
- Press seams open or to one side as instructed to ensure a professional finish.
- Finish raw edges to prevent fraying, especially for woven fabrics.

Blouse Construction

Follow the numbered steps on the pattern sheet for assembling the blouse, including sleeve variations and button application.

Skirt Construction

Construct the chosen skirt style (A or B) according to the pattern instructions, paying attention to waistline and hem finishes.

Hat Construction

Assemble the hat following the specific steps, including any felting details if applicable.

FINISHED GARMENT MEASUREMENTS

The following measurements are for the finished garments, providing an indication of fit and ease.

Measurement	Size 12	Size 14	Size 16	Size 18	Size 20
Finished Bust A, B	37"	39"	41"	43"	45"
Finished Back Length from Base of Neck A, B Blouse	21 1/4"	21 1/2"	21 3/4"	22"	22 1/4"
Finished Length A Skirt	18"	18"	18"	18"	18"
Finished Length B Skirt	18"	18"	18"	18"	18"

SPECIFICATIONS

- **Model Number:** 8020
- **Brand:** Simplicity
- **UPC:** 039363680208
- **ASIN:** B016OVE3DI
- **Material Compatibility:** Fleece, Flannel, Broadcloth, Cotton types, Lightweight Denim, Linen types, Knit fabrics
- **Manufacturer:** OUTLOOK GROUP CORP
- **Item Weight (Pattern Package):** 0.08 Kilograms
- **Age Range:** Adult
- **Languages:** Instructions available in English, Spanish, and French.

SUPPORT AND RESOURCES

For additional assistance or to explore more Simplicity patterns, visit the official Simplicity store.

Visit the Simplicity Store on Amazon

Official Simplicity Website (for sizing help and general information)