

[Manuals.plus](#) /

> [Kircuit](#) /

> Kircuit AC Adapter Instruction Manual for Craftsman 73904 Cordless Rechargeable Worklight

Kircuit Craftsman 73904 LED 6V Power Supply

Kircuit AC Adapter Instruction Manual

For Craftsman 73904 Cordless Rechargeable Worklight

INTRODUCTION

This manual provides essential information for the safe and effective use of your Kircuit AC Adapter, designed specifically for the Craftsman 73904 Cordless Rechargeable Worklight. Please read these instructions carefully before use and retain them for future reference.



Image: The Kircuit AC Adapter, showing its compact design and connection type.

SAFETY INFORMATION

Always observe the following safety precautions to prevent injury or damage to the product:

- Do not expose the adapter to rain or moisture.
- Do not disassemble the adapter. Refer all servicing to qualified personnel.
- Ensure the adapter is used within its specified input voltage range (100V-240V AC).
- Avoid using the adapter if the cord or plug is damaged.
- Keep the adapter away from heat sources and direct sunlight.
- Unplug the adapter from the power outlet when not in use or during electrical storms.

Durable design



Image: Diagram illustrating the built-in safety protections of the Kircuit AC Adapter, including short circuit, over-voltage, over-temperature, and overcurrent protection.

PACKAGE CONTENTS

Verify that your package contains the following item:

- 1 x Kircuit AC Adapter

SETUP

1. **Inspect the Adapter:** Before first use, visually inspect the AC adapter and its cable for any signs of damage.
2. **Connect to Worklight:** Locate the charging port on your Craftsman 73904 Cordless Rechargeable Worklight. Insert the barrel connector of the Kircuit AC Adapter firmly into this port.
3. **Plug into Power Outlet:** Plug the AC adapter's wall plug into a standard 100V-240V AC electrical outlet. Ensure the outlet is easily accessible.



Image: The Kircuit AC Adapter connected to a power strip, illustrating a typical setup.

OPERATING INSTRUCTIONS

Once properly set up, the Kircuit AC Adapter will begin charging your Craftsman 73904 Worklight. The charging indicator on your worklight (if present) will show the charging status.

- Allow the worklight to charge fully before its first use for optimal battery life.
- Do not leave the worklight connected to the charger for extended periods after it is fully charged, although the adapter includes overcharge protection.
- Unplug the adapter from the wall outlet and the worklight when charging is complete or when the worklight is not in use.

Your browser does not support the video tag.

Video: An official product video demonstrating the Kircuit AC Adapter for Craftsman 73904 Worklight. This video provides a visual overview of the product and its features.

MAINTENANCE

To ensure the longevity and proper functioning of your AC adapter:

- **Cleaning:** Disconnect the adapter from the power source and the worklight before cleaning. Use a soft, dry cloth to wipe the exterior. Do not use liquid cleaners or solvents.
- **Storage:** Store the adapter in a cool, dry place when not in use. Avoid wrapping the cable too tightly around the adapter to prevent damage.
- **Cable Care:** Do not bend, twist, or pull the cable excessively. This can damage the internal wires and insulation.

- The plugs on the power cable also well-made and designed to provide a secure and stable connection.
- The plugs can handle high electrical loads without overheating or causing a fire hazard.

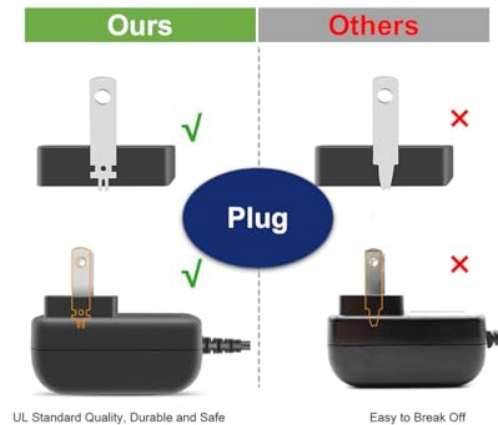


Image: Visual representation of the adapter's durable cable design and robust plug construction, highlighting features that contribute to product longevity.

TROUBLESHOOTING

| Problem | Possible Cause | Solution |
|-------------------------------------|--------------------------------------------------------------------------------------------------------------------------|-------------------------------------------------------------------------------------------------------------------------------------------------------------------------------------------------------------------------------------------------------|
| Worklight not charging. | Adapter not properly plugged in. Faulty power outlet. Damaged adapter cable/connector. Worklight battery issue. | Ensure adapter is securely plugged into both the wall outlet and the worklight. Try a different power outlet. Inspect the cable and connector for damage; replace if necessary. Consult your worklight's manual for battery troubleshooting. |
| Adapter feels warm during charging. | Normal operation. Overload or poor ventilation. | A slight warmth is normal. Ensure the adapter is in a well-ventilated area. If it becomes excessively hot, unplug immediately and contact support. |

| Problem | Possible Cause | Solution |
|------------------------------------|---------------------------------------------------------------|---------------------------------------------------------------------------------------------------------------------|
| Loose connection at the worklight. | Incorrect connector size. Worn charging port on worklight. | Verify the adapter is the correct model for your worklight. If the worklight's port is worn, it may require repair. |

SPECIFICATIONS

| Feature | Detail |
|------------------|-----------------------------------------------------------------------------------------------------------------------|
| Brand | Kircuit |
| Model Number | Craftsman 73904 LED 6V Power Supply (K0108009) |
| Input Voltage | 100V-240V AC |
| Output Voltage | 6 Volts |
| Output Current | 0.5 Amps |
| Wattage | 3 Watts |
| Frequency Range | 60 Hz |
| Connector Type | Barrel Connector |
| Cable Length | Approximately 6.5 ft |
| Color | Black |
| Material | Plastic |
| Special Features | Portable, Travel-friendly, Built-in Dynamic IC, Charger IC & Power fuse for rapid charging and overcharge protection. |



Image: The Kircuit AC Adapter displaying its 6.5 ft cord length.

WARRANTY AND SUPPORT

Kircuit products are designed for reliability and performance. For warranty information or technical support, please refer to the contact information provided with your purchase or visit the official Kircuit website. For general inquiries or assistance, you may contact the seller directly through the platform where the purchase was made.