

MOOG Mother-32

MOOG Mother-32 Semi-Modular Analog Synthesizer Instruction Manual

Model: Mother-32

1. INTRODUCTION

The Moog Mother-32 is a distinctive analog instrument designed for electronic and modular synthesis. This manual provides essential information for setting up, operating, maintaining, and troubleshooting your Mother-32, enabling you to explore its raw sound, powerful sequencing, and extensive interconnectivity.

2. PRODUCT OVERVIEW

The Mother-32 offers a raw analog sound, a powerful step-sequencer, and extensive interconnectivity. It can function as a standalone tabletop synthesizer or integrate into a Eurorack system.

2.1 Key Features

- **Analog Signal Path:** Features a Voltage Controlled Oscillator (VCO), white noise generator, classic Moog ladder filter, and an external audio input for rich, authentic sounds.
- **Semi-Modular Design:** Operates without patch cables for immediate sound creation, with a comprehensive patchbay for advanced modular exploration.
- **32-Note Step Sequencer:** Includes two sequencer modes and up to 64 on-board sequences for dynamic pattern creation and live performance.
- **Eurorack Compatibility:** Designed to be used as a tabletop synthesizer or installed as a 60HP module in a Eurorack system.
- **Expandability:** Combine multiple Mother-32 units or integrate with other Moog Mother series instruments for expanded sonic possibilities.

2.2 Component Identification

SIGNATURE MOOG SOUND IN A COMPACT FORM-FACTOR



- | | |
|--|---|
| 1 MIDI IN FOR NOTE, CLOCK, CC AND MORE | 4 ANALOG VOLTAGE CONTROLLED FILTER (VCF) |
| 2 ANALOG VOLTAGE CONTROLLED OSCILLATOR (VCO) | 5 MODULATION CONTROLS |
| 3 32-STEP SEQUENCER WITH 64-PATTERN LOCATIONS | 6 PATCHBAY WITH 18 INS AND 14 OUTS |

Figure 1: Diagram of the Mother-32 front panel controls and patchbay.

This diagram highlights the main functional areas of the Mother-32's front panel:

1. **MIDI In:** For receiving MIDI note, clock, and control change messages.
2. **Analog Voltage Controlled Oscillator (VCO):** The primary sound source.
3. **32-Step Sequencer:** For creating and playing musical patterns, with 64 pattern locations.
4. **Analog Voltage Controlled Filter (VCF):** Shapes the timbre of the sound.
5. **Modulation Controls:** Dedicated controls for various modulation sources and destinations.
6. **Patchbay:** An extensive matrix with 18 inputs and 14 outputs for modular patching.

3. SETUP

3.1 Unpacking and Inspection

Carefully remove the Mother-32 from its packaging. Inspect the unit for any signs of damage that may have occurred during shipping. It is recommended to retain all packaging materials for future transport or storage.

3.2 Included Components

Your Moog Mother-32 package should contain the following items:

- Moog Mother-32 Analog Synthesizer
- Owner's Manual
- Patch Cables (various lengths)
- Registration Card
- Quick Start Guide
- Calibration Tool
- Power Supply

3.3 Power Connection

Connect the provided power supply to the Mother-32's power input jack, located on the rear panel. Then, plug the power supply into a suitable electrical outlet. Ensure the power switch is in the OFF position before connecting, and turn it ON after all connections are made.

3.4 Audio Output

Connect the audio output of the Mother-32 (1/4-inch TS jack) to an amplifier, mixer, or audio interface using a standard 1/4-inch instrument cable. This will allow you to hear the synthesizer's output.

3.5 MIDI Connection

For external control, connect a standard 5-pin MIDI cable from your MIDI controller, sequencer, or computer interface to the MIDI IN port on the Mother-32's front panel. This enables the Mother-32 to receive MIDI note, clock, and control change messages.



Figure 2: The Moog Mother-32 synthesizer connected with patch cables, ready for operation.

This image shows the Mother-32 with its power and audio connections, along with several patch cables inserted into the modular patchbay, demonstrating its semi-modular capabilities and readiness for sound exploration.

4. OPERATING INSTRUCTIONS

4.1 Basic Sound Generation

The Mother-32's core sound is generated by its Voltage Controlled Oscillator (VCO) and shaped by the Voltage Controlled Filter (VCF). Understanding these components is fundamental to creating sounds.

4.1.1 Voltage Controlled Oscillator (VCO)

The VCO generates the primary waveform. Use the **VCO WAVE** switch to select between square and saw waves. The **FREQUENCY** knob controls the pitch of the oscillator. The **PULSE WIDTH** knob adjusts the pulse width of the square wave, affecting its timbre.

4.1.2 Voltage Controlled Filter (VCF)

The Moog Ladder Filter shapes the timbre of the sound. The **CUTOFF** knob sets the filter's frequency, determining which frequencies are allowed to pass. The **RESONANCE** knob emphasizes frequencies around the cutoff point, creating a distinctive character. Use the **VCF MODE** switch to select between Low Pass and High Pass filtering.

RESONANT MOOG LADDER FILTER

WITH SWITCHABLE LOW-PASS/HI-PASS MODES



Figure 3: A user operating the Moog Mother-32, focusing on the resonant Moog Ladder Filter.

This image illustrates the hands-on interaction with the Mother-32, specifically highlighting the filter section, which is crucial for sound sculpting and achieving the classic Moog sound.

4.2 The 32-Step Sequencer

The integrated 32-note step sequencer allows for the creation and playback of musical patterns. It supports up to 64 patterns across 8 banks, offering significant creative potential for live performance and composition.

4.2.1 Creating a Sequence

1. Press the **REC/ACCENT** button to enter record mode. The LED will illuminate.
2. Use the **STEP** buttons (1-16, 17-32) to input notes. Each press records a note at the current step.
3. Adjust the **OCTAVE/LOCATION** buttons to change the octave of the current step's note.
4. Press **RUN/STOP** to start or stop playback of the sequence.
5. To save a pattern, refer to the detailed owner's manual for specific instructions on pattern storage.

POWERFUL 32-NOTE STEP SEQUENCER

DRIVE SYNCHRONIZED SOUND TO CREATE DYNAMIC,
MODIFIABLE SOUND-PROCESSED PIECES



Figure 4: Two Moog Mother-32 units in a studio setting, demonstrating the sequencer's capabilities for live performance.

This image shows the Mother-32's sequencer section, emphasizing its role in creating and recalling patterns for dynamic musical compositions. Multiple units can be chained for complex setups.

4.3 Patchbay

The Mother-32 features a comprehensive patchbay with 18 inputs and 14 outputs, allowing for extensive modular patching and integration with other Eurorack modules. Patch cables can be used to reroute signals, modulate parameters, and create complex sound designs beyond the semi-modular default routing.

BUILT FOR LIVE PERFORMANCE WITH UP TO 64 ON-BOARD SEQUENCES

CREATE, EDIT, SAVE, AND RECALL UP TO 64 PATTERNS ACROSS 8 BANKS

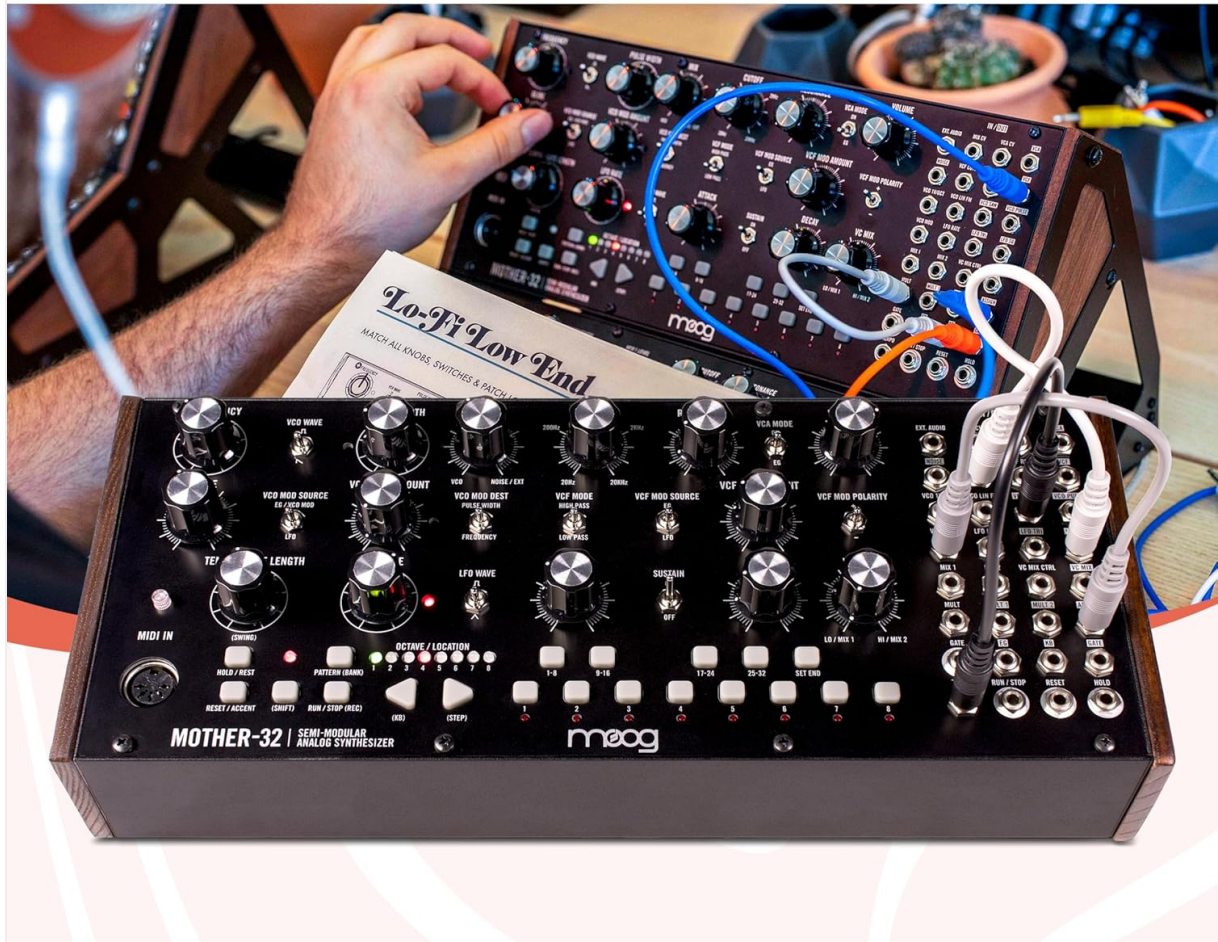


Figure 5: A close-up of the Moog Mother-32's patchbay with various patch cables connected.

This image details the patchbay, showcasing the numerous connection points for modulating parameters and routing signals, enabling advanced sound design and integration with other modular equipment.

4.4 MIDI Control

The MIDI IN port allows the Mother-32 to receive MIDI note, clock, and control change (CC) messages from external devices. This enables synchronization with other instruments and software, allowing for precise control over pitch, timing, and various parameters.

5. MAINTENANCE

5.1 Cleaning

Use a soft, dry cloth to clean the exterior of the Mother-32. Avoid abrasive cleaners, solvents, or excessive moisture, as these can damage the finish and internal components.

5.2 Storage

Store the unit in a cool, dry place away from direct sunlight, extreme temperatures, and high humidity. If possible, use the original packaging or a protective case for long-term storage or transport to prevent damage.

5.3 Calibration

The Mother-32 includes a calibration tool. Over time, the oscillator or filter may require recalibration for optimal performance. Refer to the detailed owner's manual for specific calibration procedures if necessary. Incorrect calibration can affect pitch accuracy and filter response.

6. TROUBLESHOOTING

6.1 No Sound Output

- Ensure the power supply is correctly connected and the unit is turned on.
- Verify audio cables are securely connected to the Mother-32's output and your audio system.
- Check the **VOLUME** knob on the Mother-32 and the volume levels on your amplifier or mixer.
- Confirm that a sound is being generated (e.g., sequencer running, VCO active, VCA open).

6.2 Sequencer Not Playing

- Ensure the **RUN/STOP** button is engaged and its LED is illuminated.
- Check if a pattern is loaded or recorded into the sequencer.
- If synchronized to an external clock, verify that the external clock source is sending a signal and the Mother-32 is set to receive it.

6.3 Unexpected Behavior or Sound Issues

- Disconnect all patch cables from the patchbay to return the Mother-32 to its default semi-modular routing. This can help identify if a patching error is causing the issue.
- Perform a factory reset if issues persist. Refer to the full owner's manual for detailed instructions on how to perform a factory reset.
- Ensure all knobs and switches are in their expected positions.

7. SPECIFICATIONS

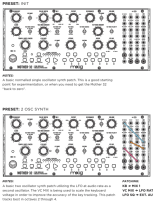
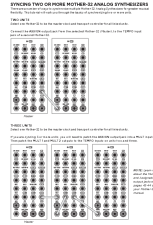

Feature	Detail
Item Weight	3.48 pounds (1.58 Kilograms)
Product Dimensions (L x W x H)	4.21 x 12.57 x 5.24 inches
Body Material	Aluminum, Wood
Model Name	Mother-32

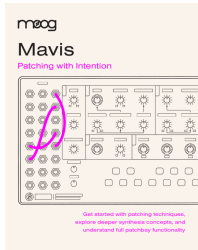
Feature	Detail
Manufacturer	Moog
UPC	094922033031, 713803236186
Connector Type	Pin (MIDI)
Color	Black
Included Components	Mother-32 Analog Synthesizer, Owner's Manual, Patch Cables, Registration Card, Quick Start Guide, Calibration Tool, Power Supply

8. WARRANTY AND SUPPORT

For detailed warranty information, technical support, and service inquiries, please refer to the registration card included with your Mother-32. You may also visit the official MOOG website for the most up-to-date support resources and contact information. Please retain your proof of purchase for all warranty claims.

Related Documents - Mother-32

	<p>Moog Mother-32 Synthesizer Patch Examples</p> <p>A guide to various patch examples for the Moog Mother-32 semi-modular analog synthesizer, including INIT, 2 OSC SYNTH, TRACKED FM, PLAY THE FILTER, SIMPLEST KICK & SNARE, and EVERYTHING! presets.</p>
	<p>Syncing Multiple Mother-32 Analog Synthesizers</p> <p>A tutorial on synchronizing two or more Moog Mother-32 analog synthesizers for greater musical flexibility, covering master clock and transport control.</p>
	<p>Patch & Tweak with Moog: A Comprehensive Guide to Semi-Modular Synthesis</p> <p>Explore Moog's Mother-32, DFAM, Subharmonicon, Grandmother, and Matriarch synthesizers with Patch & Tweak. This guide features over 100 tips, tricks, and patches, along with interviews from artists and engineers, covering analog synthesis and modular workflows.</p>



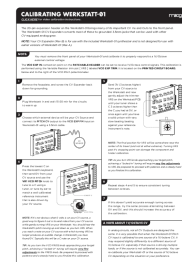
[Moog Mavis: Patching with Intention Guide](#)

A comprehensive guide to understanding and utilizing the patch bay of the Moog Mavis semi-modular analog synthesizer, covering essential patching techniques, synthesis concepts, and detailed explanations of all inputs and outputs.



[Moog Minimoog Voyager Analog Synthesizer User Manual - Setup, Features, and Operation](#)

Comprehensive user manual for the Moog Minimoog Voyager analog synthesizer, covering setup, connections, components, user interface, synthesis basics, MIDI implementation, and technical specifications.



[Calibrating the Moog Werkstatt-01 with CV Expander](#)

Step-by-step guide to calibrating the Moog Werkstatt-01 synthesizer's CV Expander for accurate 1V/Octave control voltage response. Includes detailed instructions and notes on CV signal handling.