



[Manuals.plus](#) /

> [Conair](#) /

> Conair Double Ceramic 1-Inch Flat Iron Hair Straightener Instruction Manual

Conair CS221N

Conair Double Ceramic 1-Inch Flat Iron Hair Straightener Instruction Manual

Model: CS221N

1. INTRODUCTION

Thank you for choosing the Conair Double Ceramic 1-Inch Flat Iron Hair Straightener. This manual provides essential information for the safe and effective use of your new styling tool. Please read all instructions carefully before use and retain this manual for future reference.



Image 1: Conair Double Ceramic 1-Inch Flat Iron. This image displays the white flat iron with its ceramic plates and heat setting indicators.

2. IMPORTANT SAFETY INFORMATION

When using electrical appliances, especially when children are present, basic safety precautions should always be followed, including the following:

- **DANGER:** Always unplug the appliance immediately after using.
- **WARNING:** Keep away from water. Do not use while bathing or in a shower.
- Do not place or store appliance where it can fall or be pulled into a tub or sink.
- Do not place in or drop into water or other liquid.
- If an appliance falls into water, unplug it immediately. Do not reach into the water.
- This appliance is for household use only.
- Do not use this appliance near bathtubs, showers, basins or other vessels containing water.
- Avoid touching the hot plates. Ensure the iron is unplugged when not in use.
- Be cautious around children and individuals with limited dexterity due to the lock mechanism and hot surfaces.

3. PRODUCT FEATURES

The Conair Double Ceramic Flat Iron is designed for efficient and effective hair styling. Key features include:

- **Double Ceramic Technology:** Delivers even heat for polished, healthy-looking styles with less damage.
- **1-Inch Floating Plates:** Extra-long plates glide smoothly through hair for effortless styling and efficient straightening.
- **Five Heat Settings:** Adjustable temperature up to 410°F to suit various hair types.
- **Fast Heat-Up:** Quickly reaches desired temperature for efficient styling.
- **Handle Lock:** For convenient storage and travel.



Image 2: Diagram highlighting key features of the flat iron, including 1-inch plates, floating ceramic plates, 5 LED heat settings, 30-second heat-up, and handle lock.



Fast styling,
long-lasting styles.
Higher ceramic
content* makes
it happen

*As compared to standard
Conair® ceramic coating.

Image 3: Close-up view of the flat iron's ceramic plates, emphasizing the smooth surface designed for fast styling and long-lasting results due to higher ceramic content.

4. SETUP

Before first use, ensure the flat iron is clean and free from any packaging materials.

1. Unpack the flat iron and all accessories.
2. Inspect the appliance for any visible damage. Do not use if damaged.
3. Ensure your hands are dry before plugging the appliance into a standard electrical outlet (120V).
4. Place the flat iron on a heat-resistant surface.

What's in the box



1 in. Double Ceramic
Flat Iron

Image 4: The image shows the Conair 1-inch Double Ceramic Flat Iron, indicating it is the primary item included in the product packaging.

5. OPERATING INSTRUCTIONS

Follow these steps for optimal styling results:

5.1 Powering On and Heat Settings

1. Plug the flat iron into an appropriate electrical outlet.
2. Press the ON/OFF button to turn on the appliance. The LED indicator will light up.
3. Select your desired heat setting using the temperature control buttons. Refer to the heat guide below for recommendations.
4. Allow the flat iron to heat up for approximately 30 seconds.

Heat Guide:



The image displays a heat guide for a flat iron. On the left, a vertical scale shows five temperature settings: 410°F (red indicator), 374°F (grey indicator), 338°F (grey indicator), 302°F (grey indicator), and 266°F (grey indicator). To the right, a white box titled 'Heat Guide' lists the corresponding hair types for each temperature: 410°F for Coily | Thick hair, 374°F for Wavy | Curly hair, 338°F for Medium hair, 302°F for Thin hair, and 266°F for Fragile | Fine hair. Below this, a purple box contains the text 'Long-lasting styles with less damage*' and a footnote: '*Ceramic plates create even heat, eliminating hot spots.'

Temperature (°F)	Recommended Hair Type
410°F	Coily Thick hair
374°F	Wavy Curly hair
338°F	Medium hair
302°F	Thin hair
266°F	Fragile Fine hair

Long-lasting styles with less damage*

*Ceramic plates create even heat, eliminating hot spots.

Image 5: Heat Guide for the flat iron, showing recommended temperatures for different hair types: 410°F for Coily/Thick hair, 374°F for Wavy/Curly hair, 338°F for Medium hair, 302°F for Thin hair, and 266°F for Fragile/Fine hair.

Recommended Heat Settings

Temperature	Hair Type
410°F	Coily Thick hair
374°F	Wavy Curly hair
338°F	Medium hair
302°F	Thin hair
266°F	Fragile Fine hair

5.2 Straightening Hair

1. Ensure hair is clean, dry, and detangled.
2. Section hair into small, manageable strands (approximately 1-inch wide).
3. Starting close to the roots, clamp a section of hair between the plates.
4. Smoothly glide the flat iron down the length of the hair, from roots to ends, in one continuous motion. Avoid stopping in one spot to prevent heat damage.
5. Repeat on all sections until desired straightness is achieved.

1 in. Flat Iron

Create silky-smooth looks



Before



After

Image 6: A split image showing a woman's hair before and after using the 1-inch flat iron, demonstrating the transformation from curly to silky-smooth hair.

5.3 Creating Waves

The flat iron can also be used to create soft waves:

1. Take a section of hair and clamp the flat iron near the roots.
2. Rotate the flat iron 180 degrees away from your face.
3. Slowly pull the flat iron down the hair shaft, maintaining the rotation.
4. Release the hair and allow the wave to cool before touching.

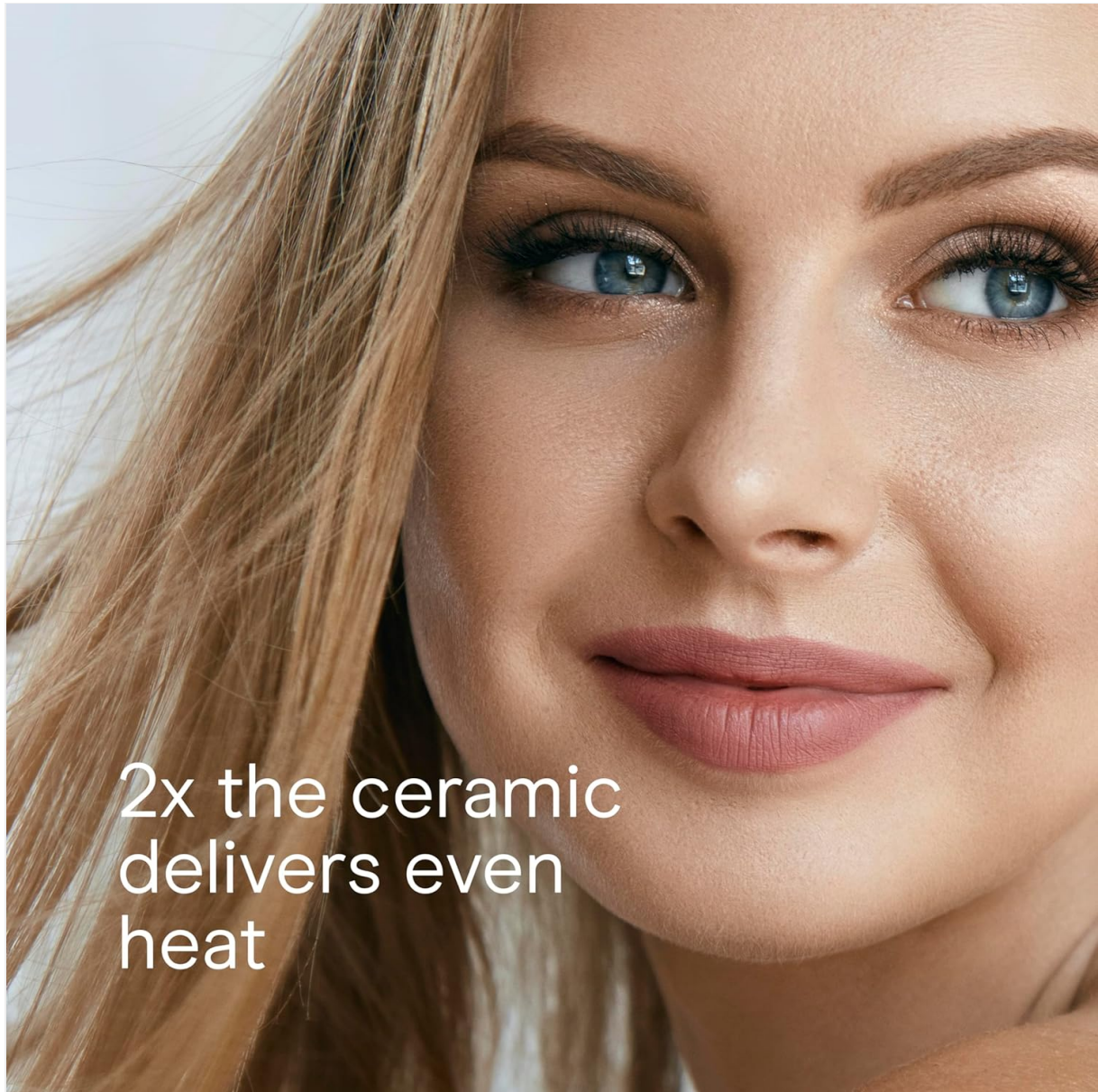


Image 7: A woman with smooth, sleek blonde hair, illustrating the results achievable with the flat iron.



Image 8: A woman with silky-smooth, straight brown hair, highlighting the effect of the extra-long plates.



Heat protection
to create shine
and style boldly

Image 9: A woman with shiny, dark hair, demonstrating the heat protection and styling capabilities of the flat iron.

6. MAINTENANCE

Proper maintenance ensures the longevity and performance of your flat iron.

- **Cleaning:** Ensure the appliance is unplugged and completely cool before cleaning. Wipe the plates and exterior with a damp cloth. Do not use abrasive cleaners or immerse the appliance in water.
- **Storage:** When not in use, unplug the appliance. Allow it to cool completely. Store it in a dry location, out of reach of children. Do not wrap the cord around the appliance, as this can cause premature wear and breakage. Use the handle lock for compact storage.

7. TROUBLESHOOTING

If you encounter any issues with your Conair Double Ceramic Flat Iron, refer to the following common troubleshooting steps:

- **Appliance does not turn on:** Ensure the power cord is securely plugged into a working electrical outlet. Check if the ON/OFF button has been pressed.
- **Appliance is not heating up:** Verify that the correct heat setting has been selected. Allow sufficient time for the appliance to reach the desired temperature (approximately 30 seconds).

- **Hair is not straightening effectively:** Ensure hair is clean, dry, and free of styling products that may create a barrier. Use smaller sections of hair and glide the iron slowly. Adjust the heat setting to a higher temperature if your hair type requires it.
- **Appliance is too hot to handle:** Always hold the appliance by the handle. Avoid touching the hot ceramic plates. Allow the appliance to cool down before storing.

If problems persist, contact customer support.

8. SPECIFICATIONS

Product Specifications

Feature	Detail
Model Number	CS221N
Plate Size	1-Inch
Plate Material	Double Ceramic
Heat Settings	5 (up to 410°F)
Color	White
Product Dimensions	11.7 x 1.2 x 1.4 inches
Item Weight	13.74 ounces
Voltage	120V
Wattage	120 watts

9. WARRANTY AND SUPPORT

Conair products are manufactured to the highest standards and are designed for reliable performance. For information regarding warranty coverage or to obtain support, please refer to the warranty card included with your purchase or visit the official Conair website.

Contact Information: For customer service inquiries, please visit www.conair.com or refer to the contact details provided in your product packaging.