

Okin 1.25.000.073.30

Okin BetaDrive Linear Actuator Motor 1.25.000.073.30 User Manual

For Power Recliners and Lift Chairs

1. PRODUCT OVERVIEW

The Okin BetaDrive Linear Actuator Motor, part number 1.25.000.073.30 (also known as MTR157), is a replacement motor designed for power recliners and lift chairs. This motor is responsible for the smooth opening and closing of the lift mechanism, restoring full functionality to your furniture.

- **Model:** 1.25.000.073.30 / MTR157
- **Brand:** Okin (Manufactured by Okin America)
- **Function:** Operates the lift mechanism in power recliners and lift chairs.

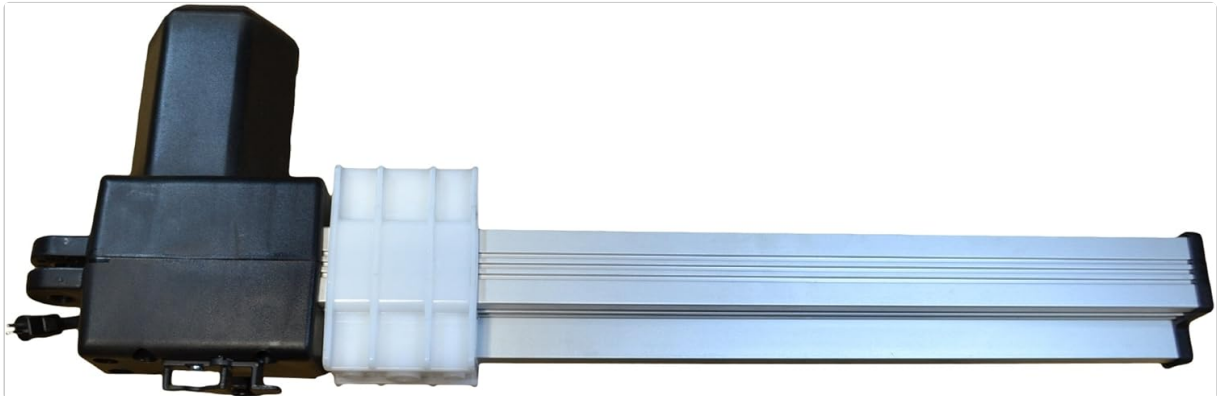


Image 1: Full view of the Okin BetaDrive Linear Actuator Motor. This image displays the complete unit, including the motor housing, linear shaft, and mounting brackets.

2. SAFETY INFORMATION

WARNING: Always prioritize safety during installation and operation.

- Always read and follow the assembly instructions carefully.
- Do not attempt to operate the chair until it is fully assembled and all connections are secure.
- Keep fingers, clothing, and other body parts clear of the lift mechanism and moving parts while the chair is in use to prevent injury.
- Do not exceed the maximum weight capacity of the chair as specified by the chair manufacturer.

- Ensure the power supply is disconnected before performing any installation, maintenance, or troubleshooting.

3. INSTALLATION GUIDE

Replacing the Okin BetaDrive Linear Actuator Motor is a straightforward process, typically requiring basic tools. It is recommended to have assistance when flipping the recliner chair.

1. **Prepare the Chair:** Unplug the recliner chair from the power outlet. Carefully flip the chair over to expose the underside mechanism.
2. **Identify the Old Motor:** Locate the existing linear actuator motor. Note its mounting points and electrical connections.
3. **Disconnect Electrical Connections:** Disconnect all electrical cables connected to the old motor. These typically include the main power cable and any control cables.
4. **Remove Old Motor:** Using appropriate tools (e.g., a wrench for bolts), unfasten the bolts or pins securing the old motor to the chair's frame. Carefully remove the old motor.
5. **Install New Motor:** Position the new Okin BetaDrive Linear Actuator Motor in the same location as the old one. Secure it using the original bolts or pins. Ensure all connections are tight and the motor is stable.
6. **Reconnect Electrical Connections:** Connect the electrical cables to the new motor. Ensure they are securely plugged in and routed to avoid pinching or damage when the chair operates.
7. **Test Operation:** Carefully return the chair to its upright position. Plug the chair back into the power outlet. Test the recliner's functions (up and down) to ensure the new motor operates correctly and smoothly.

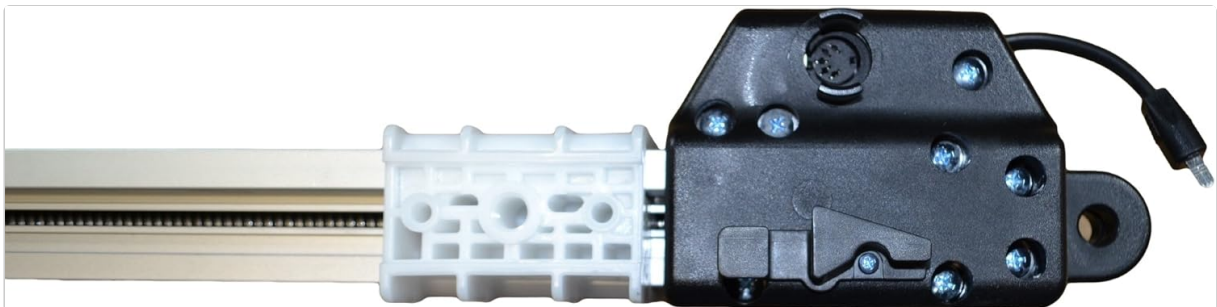


Image 2: Close-up view of the Okin BetaDrive Linear Actuator Motor's connector end. This image highlights the electrical connection points for installation.

4. OPERATION

Once installed, the Okin BetaDrive Linear Actuator Motor operates seamlessly with your recliner's existing control system. Simply use the chair's remote or integrated buttons to extend or retract the footrest and recline the backrest. The motor provides the necessary linear motion to achieve your desired position.

- Press and hold the "Recline" or "Extend" button to move the chair into a reclined position.
- Press and hold the "Upright" or "Retract" button to return the chair to its upright position.
- Release the button at any point to stop the motion.

5. MAINTENANCE

Proper maintenance ensures the longevity and smooth operation of your Okin BetaDrive Linear Actuator Motor.

- **Cleaning:** Wipe clean the exterior of the motor and the linear shaft with a dry or slightly damp cloth. Avoid using harsh chemicals or abrasive cleaners.
- **Inspection:** Periodically inspect the motor and its connections for any signs of wear, damage, or loose fasteners. Ensure all cables are intact and not frayed.
- **Lubrication:** The linear screw mechanism is typically pre-lubricated. Avoid applying additional lubricants unless specifically recommended by the manufacturer, as this could attract dust and debris.
- **Power:** Ensure the motor is connected to a stable power source within the specified voltage range (24V).

6. TROUBLESHOOTING

If you encounter issues with your recliner after installing the Okin BetaDrive motor, consider the following troubleshooting steps:

- **Motor Not Responding:**
 - Check all power connections. Ensure the chair is plugged into a working outlet and all motor cables are securely connected.
 - Verify the power supply unit (transformer) is functioning correctly.
 - Inspect the hand control for damage or loose connections.
- **Motor Operates Slowly or Jerkily:**
 - Ensure the chair's mechanism is not obstructed by foreign objects.
 - Check for any binding in the chair's frame or moving parts that might impede the motor's movement.
 - Confirm the chair is not overloaded beyond its weight capacity.
- **Unusual Noises:**
 - Listen for the source of the noise. It could indicate a loose bolt, a worn part in the chair's mechanism, or an issue with the motor itself.
 - If the noise persists and is clearly from the motor, contact customer support.

If troubleshooting steps do not resolve the issue, contact the manufacturer or a qualified technician for assistance.

7. SPECIFICATIONS

Feature	Detail
Model Number	1.25.000.073.30 (MTR157)
Brand	Okin (Manufacturer: Okin America)
Voltage	24V
Power	50W
Duty Cycle	1 min ON / 8 min OFF
Product Dimensions	22"D x 4"W x 4"H

Item Weight	5.7 pounds
Material	Metal
Color	Black
UPC	617762076633

8. WARRANTY AND SUPPORT

For warranty information or technical support regarding your Okin BetaDrive Linear Actuator Motor, please contact Okin America directly or the retailer from whom you purchased the product. Ensure you have your model number (1.25.000.073.30 or MTR157) and proof of purchase available when contacting support.

Manufacturer: Okin America

For patents and additional information, refer to the manufacturer's official website or documentation provided with your product.