

## Legrand LEG97609

# Legrand Surface-Mounted Narrow Push Button Switch, White (Model LEG97609)

Instruction Manual

## 1. INTRODUCTION

This manual provides comprehensive instructions for the installation, operation, and maintenance of your Legrand Surface-Mounted Narrow Push Button Switch, Model LEG97609. Please read this manual thoroughly before installation and use to ensure proper function and safety. Keep this manual for future reference.



Figure 1: Front view of the Legrand LEG97609 Surface-Mounted Narrow Push Button Switch in white.

## 2. SAFETY INFORMATION

---

**WARNING:** Electrical installation should only be performed by a qualified electrician or competent person. Incorrect installation can lead to electric shock, fire, or serious injury.

- Always disconnect power at the main circuit breaker or fuse box before beginning any electrical work.
- Verify that the power is off using a voltage tester before touching any wires.
- Ensure all wiring connections are secure and comply with local electrical codes and regulations.
- Do not exceed the specified electrical ratings for this device (6 Amperes, 1380 Watts at 230 Volts).
- This product is designed for indoor use only.

## 3. PACKAGE CONTENTS

---

The Legrand LEG97609 package includes:

- 1 x Legrand Surface-Mounted Narrow Push Button Switch (White)
- 1 x Surface-mounting frame (integrated or separate, ready for installation)



Figure 2: Legrand push button switch as supplied, often with integrated surface-mounting components.

#### 4. SPECIFICATIONS

Feature	Specification
Model Number	LEG97609
Brand	Legrand
Color	White
Material	Plastic
Dimensions (L x W x H)	3.5 x 4.5 x 4.5 cm
Weight	30 grams
Voltage	230 Volts
Amperage	6 Amperes

Maximum Power	1380 Watts
Connection Type	Screw terminals (allows 2 wires per terminal for looping)
Standards Compliance	NF

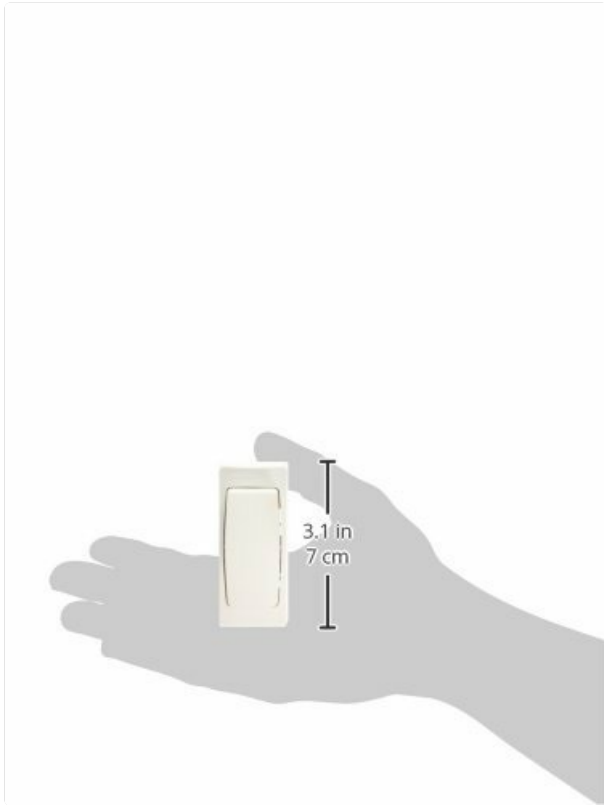


Figure 3: Approximate dimensions of the Legrand push button switch.

## 5. INSTALLATION

This Legrand push button switch is designed for surface mounting and does not require a flush-mounted box, simplifying renovation projects.

### 5.1. Pre-Installation Steps

- 1. Disconnect Power:** Before starting, ensure the main power supply to the circuit is turned off at the circuit breaker or fuse box.
- 2. Verify Power Off:** Use a voltage tester to confirm that no power is present at the installation site.
- 3. Prepare Wires:** Strip approximately 10-12mm of insulation from the ends of the electrical wires.

### 5.2. Wiring Instructions

The switch uses screw terminals for connection. It allows for two wires per terminal for looping, which is useful for certain wiring configurations.



Figure 4: Wiring diagrams for a luminous push button and a push button with a tele-interrupter. Consult a qualified electrician for complex installations.

Refer to the wiring diagram (Figure 4) for typical connections. Common configurations include:

- **Standard Push Button:** Connect the phase (L) and neutral (N) wires to the appropriate terminals as indicated on the device or in the diagram. The push button typically controls a relay or a tele-interrupter.
- **Luminous Push Button:** If using a luminous version (not this specific model, but shown in diagram), ensure the additional connection for the indicator light is made.

### 5.3. Mounting the Switch

1. Position the surface-mounting frame on the desired wall location.
2. Mark the drilling points for the mounting screws.
3. Drill pilot holes if necessary and secure the frame to the wall using appropriate screws.
4. Connect the prepared electrical wires to the screw terminals on the back of the push button mechanism, ensuring a tight and secure connection.
5. Carefully place the wired push button mechanism into the mounted frame, ensuring no wires are pinched.
6. Secure the front cover or push button module to the frame.



Figure 5: Example of the Legrand push button switch installed on a wall, demonstrating its compact and discreet design.

### 5.4. Post-Installation

Once the switch is securely mounted and all connections are made, restore power at the main circuit breaker. Test the push button to ensure it functions correctly.

## 6. OPERATING INSTRUCTIONS

---

The Legrand LEG97609 is a simple push button switch. To operate, press the button to activate or deactivate the connected circuit (e.g., turn lights on/off via a tele-interrupter or relay). The button will return to its original position after being pressed.

## 7. MAINTENANCE

---

This push button switch requires minimal maintenance.

- **Cleaning:** To clean the surface of the switch, gently wipe it with a soft, damp cloth. Do not use abrasive cleaners, solvents, or harsh chemicals, as these can damage the plastic finish.
- **Inspection:** Periodically inspect the switch for any signs of damage, loose connections, or discoloration. If any issues are observed, disconnect power and consult a qualified electrician.
- **No User-Serviceable Parts:** There are no user-serviceable parts inside the switch. Do not attempt to disassemble the unit.

## 8. TROUBLESHOOTING

---

If the push button switch is not functioning as expected, consider the following:

- **No Power:** Check if the circuit breaker has tripped or if a fuse has blown. Restore power if necessary.
- **Loose Connections:** Disconnect power and carefully check all wire connections at the switch terminals and the connected device (e.g., tele-interrupter). Ensure they are secure.
- **Incorrect Wiring:** Review the wiring diagram (Figure 4) and ensure the switch is wired correctly for your application.
- **Faulty Connected Device:** If the switch appears to be working (e.g., you hear a click from a relay), the issue might be with the device it controls (e.g., the light fixture or tele-interrupter).
- **Damaged Switch:** If the switch is physically damaged or unresponsive after checking the above, it may need replacement.

If problems persist, consult a qualified electrician.

## 9. WARRANTY AND SUPPORT

---

For warranty information and customer support, please refer to the official Legrand website or contact your local Legrand distributor. Keep your proof of purchase for warranty claims.

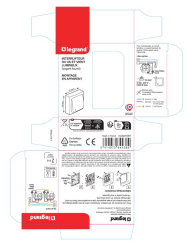

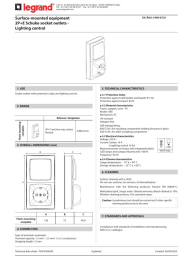
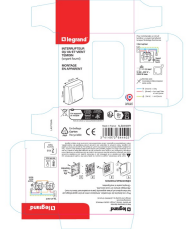

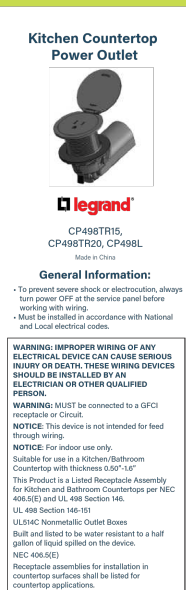
## 10. ADDITIONAL RESOURCES

---

For detailed technical documentation and further instructions, you may refer to the official Legrand user manuals:

- [User Manual \(PDF\) - Link 1](#)
- [User Manual \(PDF\) - Link 2](#)

Related Documents - LEG97609

	<p><a href="#">Legrand 2-Way Lighted Switch (Surface Mount) - Model ALB2211WH Installation Guide</a></p> <p>Installation guide and technical specifications for the Legrand ALB2211WH surface-mounted two-way lighted switch. Features easy connection, 2300W max capacity, and includes an indicator light for visibility in the dark.</p>
	<p><a href="#">Legrand XL³ HP 160: Electrical Distribution Cabinets &amp; Accessories Catalog</a></p> <p>Comprehensive catalog of Legrand XL³ HP 160 series electrical distribution cabinets, enclosures, and accessories. Find technical specifications, dimensions, and product codes for surface-mounted, flush-mounted, and metal solutions.</p>
	<p><a href="#">Legrand 2P+E Schuko Socket Outlets with Lighting Control - Technical Data</a></p> <p>Technical specifications and data for Legrand's surface-mounted 2P+E Schuko socket outlets, designed for lighting control. Includes details on protection, materials, electrical characteristics, dimensions, and standards.</p>
	<p><a href="#">Legrand ALB2212WH Two-Way Switch with Indicator Light - Installation Guide</a></p> <p>Information and installation guide for the Legrand ALB2212WH surface-mounted two-way switch with an integrated indicator light. Details technical specifications, wiring, and mounting instructions.</p>
	<p><a href="#">Legrand Modular Devices and Distribution Boards 2025 Catalog</a></p> <p>Comprehensive catalog of Legrand modular devices and distribution boards for electrical installations and data distribution, featuring circuit breakers, residual current devices, surge protective devices, switches, and distribution boards. Includes product specifications, technical details, and ordering information.</p>
	



This product is suitable for work surfaces per NEC 406.5(F)  
This Product is suitable for use with non-metallic cable (NM), metal-clad cable (MC), and metal conduit (EMT).  
This Product accepts #10-#14NMG solid and stranded copper wire and copper-clad wire.  
Pressure wire termination only.

#### Product Description:

The Kitchen Countertop Outlet is a code-compliant, UL 498-certified solution for kitchen islands and peninsulas, featuring a compact design and quick connection for easy installation. Passing a strict half-gallon spill test, the outlet is designed and rated to take in water and drain it out without short-circuiting to offer the utmost safety for homeowners. The outlet can withstand strong wear and tear, with built-in corrosion/chemical resistance, and the surface-mount design makes everyday cleaning easy to help maintain long-term aesthetic. Purchase the outlet with an optional lid, which comes in four cast metal options to match or complement kitchen finishes.

#### Installation:

##### Installation with Lid:

- Gather required materials:
  - CP498TR Device and Tail
  - Lid (CP498L - Sold Separately)
  - GFCI protected circuit
  - Suitable cable for your installation
  - Suitable 1/2" cable connector for your installation
- 2-1/4" Hole saw or similar tool
- Locate countertop area for install. Ensure the bottom of the counter surface is free of debris and irregularities.
- Using a hole saw or similar tool, drill a hole in the countertop.



- Remove sharp edges from the hole opening.
- Strip cable/conduit sheathing leaving 3.5 inches of insulated conductors exposed.

- Remove the 2 screws from the back cover of the tail and remove the cover. Install 1/2" cable connector in to the tail hole and secure cable/conduit.



- Strip conductors according to the strip gage provided on the device and connect to the proper terminals, pressure wire termination only.



- Note: The tail can be wired above the counter and fit back through the hole.

Terminal	Conductor
GREEN	Grounding conductor (Green wire)
WHITE	Neutral (White or Gray wire)
HOT	Circuit Conductor (Typically Black or Red)

Torque terminal screws to 14-16 inch-pounds.



- Replace back cover on to tail and secure with 2 screws.

- Insert lid onto the top surface of the hole. Align the lid in its desired direction.



- Insert device body into the lid and hole and hand tighten the nut underneath the counter. Use tongue and groove pliers or a similar tool to turn the nut a final 1/2 turn to secure the device. Do not overtighten.



- Align post with alignment feature and insert the tail into the body of the device until the snap engages.



- Terminate cable to the GFCI protected circuit and secure as needed.

##### Installation without Lid:

- Gather required materials:
  - CP498TR Device and Tail
  - GFCI protected circuit
  - Suitable cable for your installation
  - Suitable 1/2" cable connector for your installation
- 2" Hole saw or similar tool
- Locate countertop area for install. Ensure the bottom of the counter surface is free of debris and irregularities.
- Using a hole saw or similar tool, drill a hole in the countertop.



- Remove sharp edges from the hole opening.
- Strip cable/conduit sheathing leaving 3.5 inches of insulated conductors exposed.

- Remove the 2 screws from the back cover of the tail and remove the cover. Install 1/2" cable connector in to the tail hole and secure cable/conduit. Install 1/2" cable connector into the tail hole and secure cable/conduit.



- Strip conductors according to the strip gage provided on the device and connect to the proper terminals, pressure wire termination only.



- Note: The tail can be wired above the counter and fit back through the hole.

Terminal	Conductor
GREEN	Grounding conductor (Green wire)
WHITE	Neutral (White or Gray wire)
HOT	Circuit Conductor (Typically Black or Red)

Torque terminal screws to 14-16 inch-pounds.



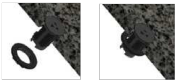
## [Legrand Kitchen Countertop Power Outlet Installation Guide](#)

Installation instructions and product details for the Legrand Kitchen Countertop Power Outlet (models CP498TR15, CP498TR20, CP498L). Features safety warnings, product specifications including water resistance and GFCI compatibility, and step-by-step installation guides for kitchen islands and peninsulas. Includes warranty information.

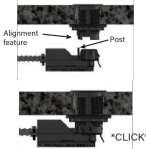


8. Replace back cover on to tail and secure with 2 screws.

9. Insert device body into the hole and hand tighten the nut underneath the counter. Use tongue and groove pliers or a similar tool to turn the nut a final 1/2 turn to secure the device. Do not overtighten.



10. Insert the tail into the body of the device until the snap engages.



11. Terminate cable to the GFCI protected circuit and secure as needed.

1 year warranty