

Plantronics M90

Plantronics M90 Wireless Bluetooth Headset User Manual

Model: M90

[Overview](#)

[Setup](#)

[Operating Instructions](#)

[Maintenance
Support](#)

[Troubleshooting](#)

[Specifications](#)

[Warranty &](#)

1. PRODUCT OVERVIEW

The Plantronics M90 Wireless Bluetooth Headset is designed for clear communication and audio playback. It features HD audio clarity, multi-language voice prompts, and intuitive controls for managing calls and music. The headset is lightweight and includes a DeepSleep hibernation mode to extend battery life when not in use.

Package Contents:

- Plantronics M90 Wireless Bluetooth Headset
- USB Charging Cable
- User Manual (this document)



Figure 1: Plantronics M90 Headset Front View. This image displays the front of the M90 headset, highlighting its compact and ergonomic design.

2. SETUP

2.1 Charging the Headset

Before first use, fully charge your M90 headset. Connect the USB charging cable to the headset's charging port and plug the other end into a USB wall charger or computer USB port. The indicator light will show charging status and turn off when fully charged. A full charge provides approximately 11 hours of talk time.

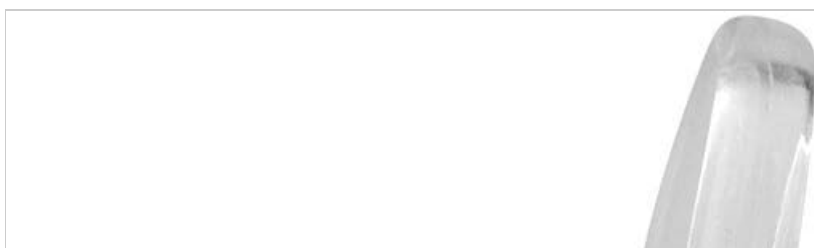




Figure 2: Plantronics M90 Headset Side View. This image shows the side profile of the headset, including the location of the charging port and volume controls.

2.2 Pairing with Your Device

1. **Power On:** Press and hold the Call button until you hear "power on" and the indicator light flashes blue.
2. **Pairing Mode:** If this is your first time using the headset, it will automatically enter pairing mode, and you will hear "pairing" and the indicator light will flash red and blue. If not, press and hold the Call button until you hear "pairing".
3. **Activate Bluetooth:** On your smartphone or other Bluetooth-enabled device, turn on Bluetooth and search for new devices.
4. **Select Headset:** Select "PLT_M90" from the list of found devices. If prompted for a passcode, enter "0000" (four zeros).
5. **Confirmation:** Once successfully paired, you will hear "pairing successful" and the indicator light will stop flashing red/blue and flash blue once.

2.3 Language Selection

During initial setup, the headset will prompt you to select a language for audible status alerts. Follow the voice prompts to choose between English, Spanish, and French for notifications on talk time, battery level, connection status, and more.

3. OPERATING INSTRUCTIONS

3.1 Wearing the Headset

The M90 headset is designed for comfortable wear. Position the earpiece gently into your ear. The lightweight design and soft eartip ensure comfort for extended periods.



Figure 3: Plantronics M90 Earpiece Detail. This image provides a close-up of the earpiece, illustrating its design for in-ear comfort and sound delivery.

3.2 Call Management

- **Answer/End Call:** Press the Call button once.
- **Reject Call:** Press and hold the Call button for 2 seconds.
- **Redial Last Number:** Double-press the Call button.
- **Voice Control:** Press and hold the Call button for 2 seconds to activate your smartphone's voice assistant (e.g., Siri, Google Assistant).

3.3 Audio Playback

- **Play/Pause:** Press the Call button once.

- **Next Track:** Double-press the Call button.
- **Volume Control:** Use the volume buttons on the side of the headset to adjust audio levels.

3.4 DeepSleep Mode

If the headset is disconnected from your phone for more than 90 minutes, it will enter DeepSleep hibernation mode to conserve battery. To exit DeepSleep mode, press the Call button. The headset will automatically reconnect to your phone if it is within range.

4. MAINTENANCE

- **Cleaning:** Gently wipe the headset with a soft, dry cloth. Do not use liquid cleaners or abrasive materials.
- **Storage:** Store the headset in a cool, dry place away from extreme temperatures and direct sunlight.
- **Battery Care:** For optimal battery life, avoid fully discharging the battery frequently. Charge the headset regularly.
- **Water Resistance:** The M90 is not water resistant. Avoid exposure to moisture.

5. TROUBLESHOOTING

5.1 Headset Not Powering On

Ensure the headset is fully charged. Connect it to the charging cable and allow it to charge for at least 30 minutes before attempting to power it on again.

5.2 Cannot Pair with Device

- Ensure the headset is in pairing mode (indicator light flashing red and blue).
- Make sure Bluetooth is enabled on your device.
- Move the headset closer to your device (within 10 meters).
- Turn off and then on your device's Bluetooth.
- If previously paired, try deleting "PLT_M90" from your device's Bluetooth list and re-pairing.

5.3 Poor Audio Quality

- Ensure the headset is within Bluetooth range of your device.
- Check for obstructions between the headset and your device.
- Adjust the volume on both the headset and your device.
- Ensure the earpiece is properly seated in your ear.

6. SPECIFICATIONS

Model Name	M90
Manufacturer	Plantronics
Connectivity Technology	Wireless (Bluetooth)
Bluetooth Range	Up to 10 meters (33 feet)
Talk Time	Up to 11 hours
Material	Plastic, Silicone

Item Weight	8 Grams (0.282 ounces)
Product Dimensions	4.02 x 1.69 x 7.05 inches
Water Resistance	Not Water Resistant
Included Components	Headset, USB Charging Cable, User Manual

7. WARRANTY & SUPPORT

This Plantronics M90 Wireless Bluetooth Headset is a renewed product. Certified Refurbished products are tested and certified to look and work like new. The refurbishing process includes functionality testing, basic cleaning, inspection, and repackaging. The product ships with all relevant accessories and a minimum 90-day warranty.

For support or warranty claims, please refer to the retailer where the product was purchased or visit the official Plantronics (now Poly) website for general product information and resources.

