

Westbrass ASB-50

Westbrass ASB-50 Sink Top Waste Disposal Air Switch Instruction Manual

Model: ASB-50

INTRODUCTION

This manual provides comprehensive instructions for the installation, operation, and maintenance of your Westbrass ASB-50 Sink Top Waste Disposal Air Switch and Single Outlet Control Box. This air switch system is designed to provide a safe and convenient method for operating your garbage disposal unit by eliminating the risk of electrical shock associated with traditional wall switches. Please read this manual thoroughly before installation and operation to ensure proper function and safety.

SAFETY INFORMATION

WARNING: This product contains chemicals known to the State of California to cause cancer and birth defects or other reproductive harm. For more information, go to www.P65Warnings.ca.gov.

- Always disconnect power to the disposal unit before performing any installation or maintenance.
- Ensure all electrical connections are made according to local codes and regulations. If unsure, consult a qualified electrician.
- The air switch system is designed to prevent electrical shock by using air pressure to activate the disposal, isolating the electrical components from the user.
- Do not attempt to modify the product. Use only genuine Westbrass replacement parts if needed.

COMPONENTS INCLUDED

Your Westbrass ASB-50 Air Switch system includes the following components:

- Flush Button (Powder Coat White)
- Air Switch Control Box (Single 120V Outlet)
- 6-foot Air Hose
- Mounting Hardware (e.g., nuts, washers)



Figure 1: Overview of the Westbrass ASB-50 Air Switch components, including the flush button, control box, and air hose.

FLUSH BUTTON DETAILS



BRASS COVER

**SOLID BRASS
PUSH BUTTON**

SLEEK DESIGN

Figure 2: Detailed view of the flush button, highlighting its brass cover, solid brass push button, and sleek design.

SETUP AND INSTALLATION

Proper installation is key to the safe and effective operation of your air switch. Follow these steps carefully.

1. **Prepare Mounting Location:** The flush button requires a 1-1/4 inch to 1-3/8 inch hole for mounting. This can be on a countertop, sink, or wall. Ensure the location is within six feet of a dedicated 120V, 15 amp electrical outlet for the control box.
2. **Mount the Flush Button:** Insert the flush button assembly into the prepared hole. Secure it from underneath with the provided mounting nut and seal washer. The button's body length is approximately 3 inches, fitting decks up to 1-1/4 inches thick.
3. **Connect Air Hose:** Attach one end of the 6-foot air hose to the air tube port on the underside of the flush button. Ensure a snug fit.
4. **Position Control Box:** Place the control box in a dry, accessible location, ideally under the sink, close to the dedicated 120V outlet.

5. **Connect Air Hose to Control Box:** Attach the other end of the air hose to the air inlet on the control box.
6. **Connect Disposal to Control Box:** Plug your garbage disposal's power cord into the single 120V outlet on the control box.
7. **Plug Control Box into Wall Outlet:** Finally, plug the control box's power cord into the dedicated 120V, 15 amp wall outlet.

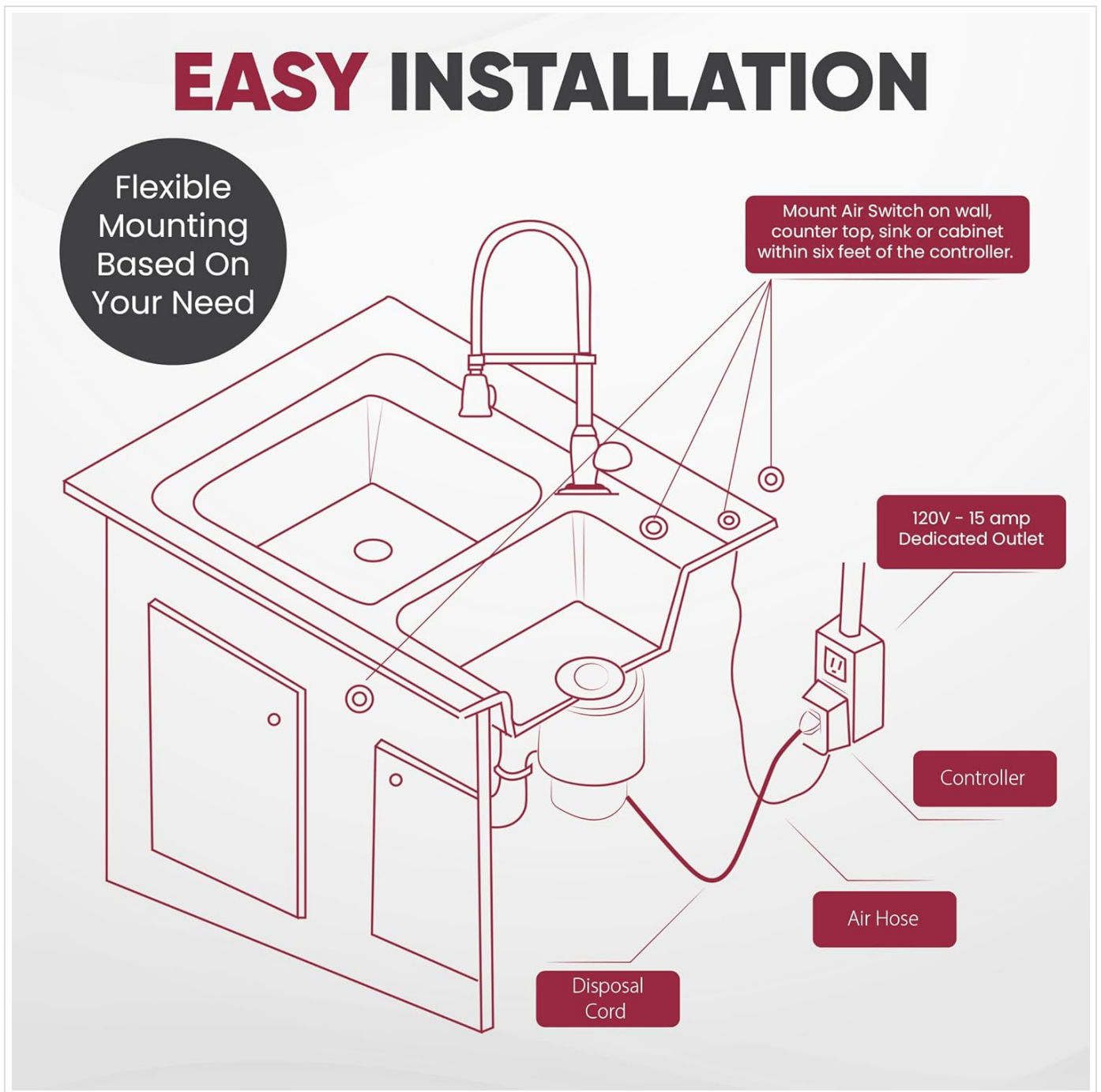


Figure 3: Installation diagram showing the connection points for the flush button, air hose, control box, and disposal unit.

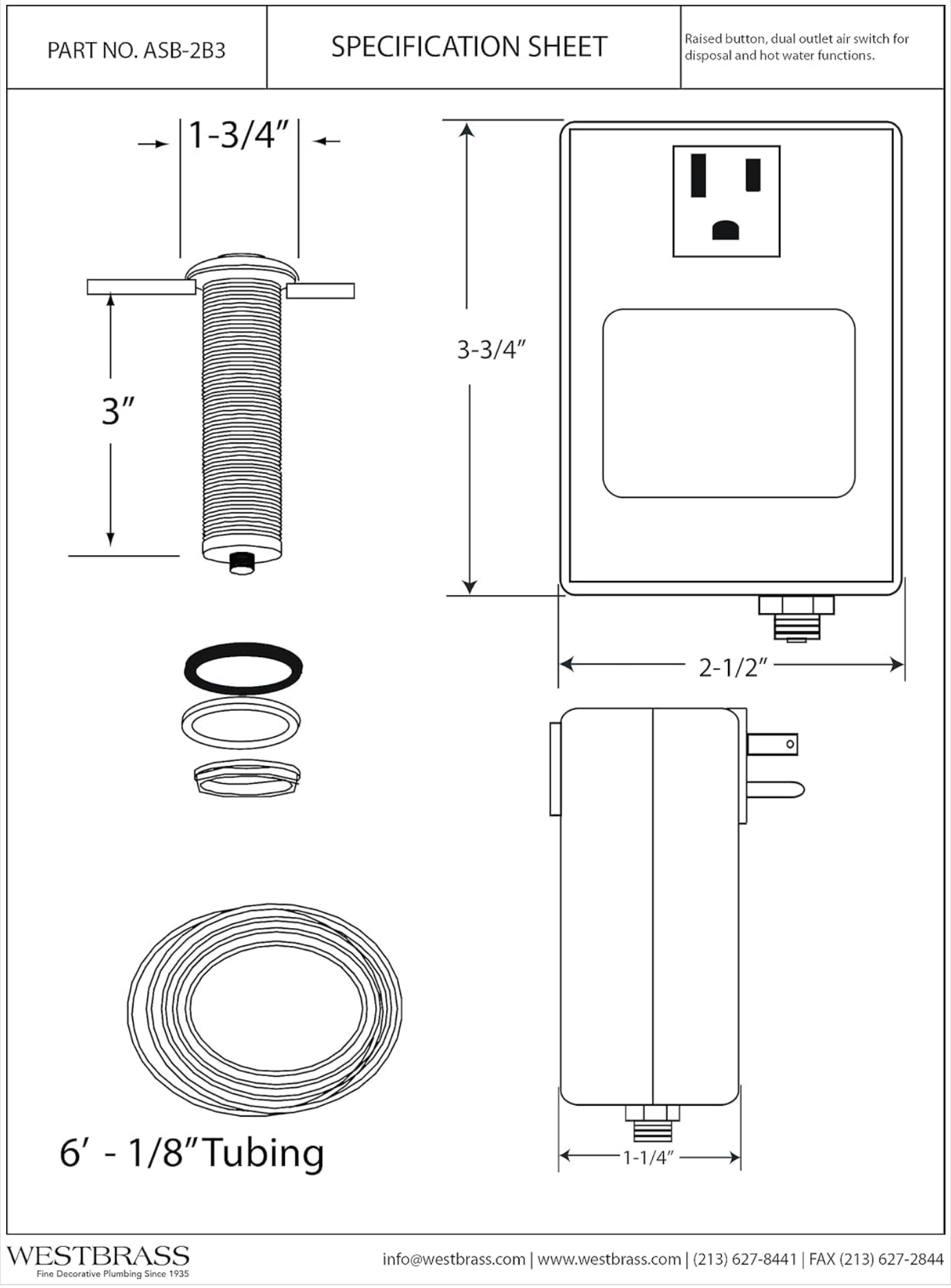


Figure 4: Technical drawing with dimensions for the ASB-50 air switch components, useful for pre-installation planning.

OPERATING INSTRUCTIONS

Operating your Westbrass ASB-50 Air Switch is simple and intuitive.

1. **To Start the Disposal:** Press the flush button firmly. This sends a pulse of air through the hose to the control box, which then activates the garbage disposal.
2. **To Stop the Disposal:** Press the flush button firmly again. A second pulse of air will signal the control box to turn off the garbage disposal.

The air switch mechanism ensures that there is no electrical connection between the button you touch and the electrical current powering the disposal, providing enhanced safety.



Figure 5: User interaction with the air switch button to activate the disposal.

MAINTENANCE

The Westbrass ASB-50 Air Switch is designed for durability and requires minimal maintenance. Regular cleaning and occasional checks will help ensure its longevity.

- **Cleaning:** Clean the flush button with a soft, damp cloth and mild soap. Avoid abrasive cleaners or harsh chemicals, as these can damage the finish.
- **Air Hose Check:** Periodically inspect the air hose for any kinks, cracks, or disconnections. Ensure it remains securely

attached to both the button and the control box.

- **Button Operation:** If the button feels stiff or unresponsive, ensure no debris is lodged around it. The button is tested for 25,000 pushes, indicating long-term reliability.

TROUBLESHOOTING

If you encounter issues with your Westbrass ASB-50 Air Switch, refer to the following common problems and solutions:

Problem	Possible Cause	Solution
Disposal does not turn on when button is pressed.	No power to control box. Air hose kinked or disconnected. Disposal unit itself is not working. Button mechanism issue.	Check if the control box is securely plugged into a live outlet. Reset circuit breaker if tripped. Inspect the air hose for any obstructions or disconnections at both ends. Reconnect or straighten as needed. Test the disposal by plugging it directly into a working wall outlet (if possible and safe to do so). Ensure the button is pressed firmly and fully. If it feels stuck or unresponsive, check for debris.
Disposal does not turn off.	Button not fully releasing. Air hose issue. Control box malfunction.	Ensure the button returns to its original position after being pressed. Check the air hose for any issues that might prevent the air pulse from stopping. Unplug the control box from the wall outlet to turn off the disposal. Contact support if the issue persists.
Button feels stiff or requires excessive force.	Debris around button. Internal mechanism wear.	Clean around the button with a soft cloth. If the product is older and has seen significant use, the internal mechanism may be worn. Consider replacement if cleaning does not resolve the issue.

SPECIFICATIONS

Feature	Detail
Model Number	ASB-50
Manufacturer	Westbrass
Item Weight	11.2 ounces
Product Dimensions	7.25 x 8.25 x 3.5 inches (overall package)
Flush Button Fit	Fits 1-1/4 in. to 1-3/8 in. holes; 1-3/4 in. length switch body fits 1-1/4 in. thick decks
Control Box Outlet	Single (1) 120V outlet, no-shock design
Air Hose Length	6 feet (approx. 6.13 feet)
Material	Brass; Plastic; Steel
Color	Powder Coat White (for this specific model)

Feature	Detail
Country of Origin	Taiwan

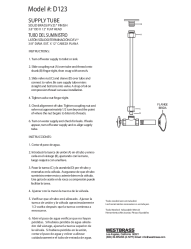
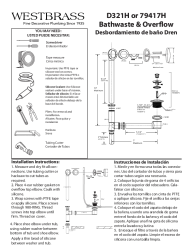
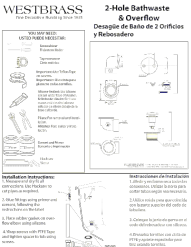
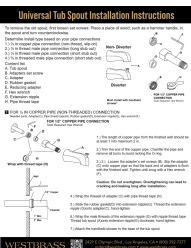
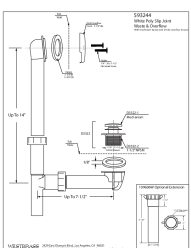



Figure 6: Detailed product dimensions for the control box and flush button.

WARRANTY AND SUPPORT

For warranty information or technical support regarding your Westbrass ASB-50 Air Switch, please contact Westbrass directly. Details can typically be found on the manufacturer's official website or by referring to the product packaging. You can also visit the official Westbrass Store for more information and contact options: [Westbrass Store on Amazon](#).

Related Documents - ASB-50

	<p>Westbrass D123 Supply Tube Installation Guide</p> <p>Installation instructions and product details for the Westbrass D123 Solid Brass Supply Tube (3/8" OD x 12" Flat Head). Includes steps for connecting to toilets or sinks.</p>
	<p>Westbrass D321H or 79417H Bathwaste & Overflow Installation Guide</p> <p>Installation instructions and care guide for Westbrass D321H or 79417H Bathwaste & Overflow drain.</p>
	<p>Westbrass 2-Hole Bathwaste & Overflow Installation Guide</p> <p>Detailed installation instructions and parts list for the Westbrass 2-Hole Bathwaste & Overflow plumbing fixture. Includes required tools and steps for proper setup.</p>
	<p>Universal Tub Spout Installation Guide WESTBRASS</p> <p>Comprehensive installation instructions for WESTBRASS Universal Tub Spouts, covering various pipe connection types including copper and threaded male connections. Learn how to properly install your new tub spout.</p>
	<p>Westbrass 593244 White Poly Slip Joint Waste & Overflow Technical Specifications</p> <p>Detailed technical specifications and diagram description for the Westbrass 593244 White Poly Slip Joint Waste & Overflow, including component dimensions, part numbers, and manufacturer contact information.</p>
	<p>Westbrass HSF6701 Filter Handheld Shower - Polished Chrome, Satin Nickel, Matte Black</p> <p>Discover the Westbrass HSF6701 Filter Handheld Shower. Enjoy softer hair and skin with its advanced filtration, reducing chlorine, dirt, and odor. Features a 60" hose and available in Polished Chrome, Satin Nickel, and Matte Black finishes. Rated for 3 months or 5,000 gallons.</p>