



[Manuals.plus](#) /

› [PBS](#) /

› [PBS Best of Big Blue Live DVD User Manual](#)

**PBS 35221740**

# PBS Best of Big Blue Live DVD User Manual

Comprehensive guide for enjoying your "Best of Big Blue Live" DVD.

## INTRODUCTION

---

Welcome to the "Best of Big Blue Live" DVD. This program documents the vibrant marine ecosystem of the Monterey Bay National Marine Sanctuary, showcasing a variety of marine creatures including humpback whales, blue whales, sea lions, dolphins, elephant seals, sea otters, great white sharks, shearwaters, and brown pelicans. This manual provides essential information for setting up, operating, and maintaining your DVD to ensure an optimal viewing experience.

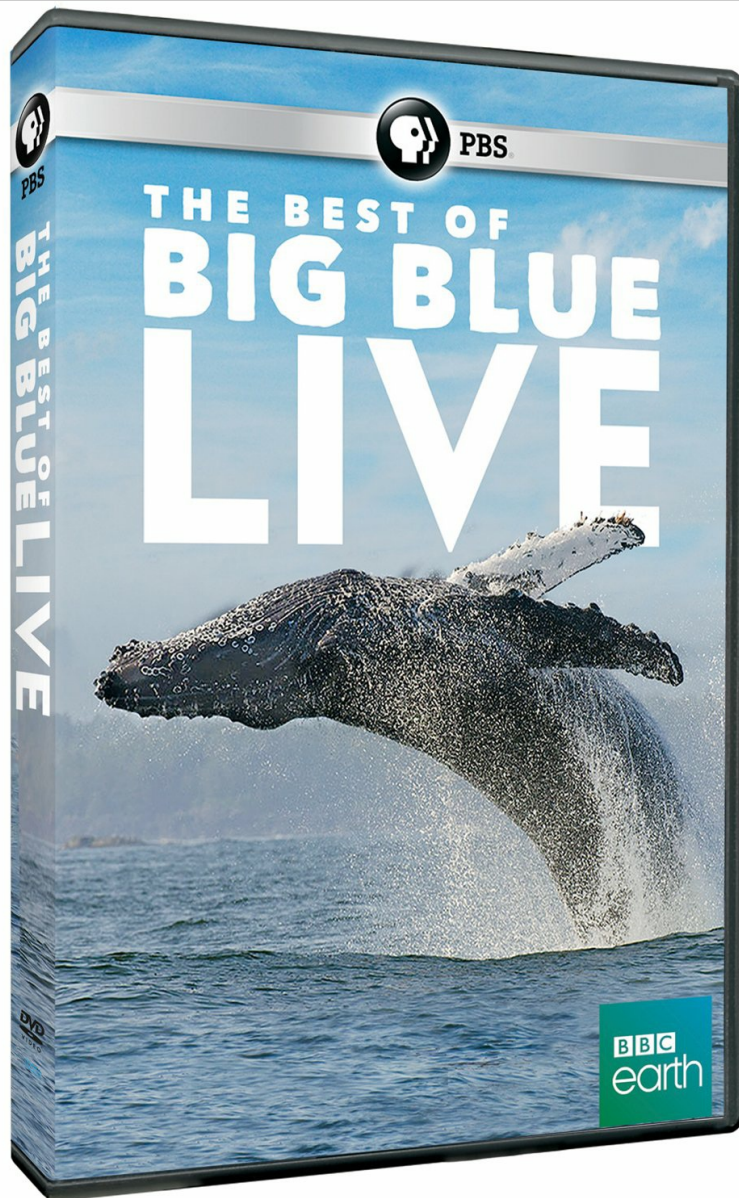


Image: Front cover of the "Best of Big Blue Live" DVD. The cover features a large whale breaching out of the ocean, with a clear blue sky and ocean in the background, highlighting the marine life theme of the documentary.

## SETUP

---

To begin watching your "Best of Big Blue Live" DVD, follow these simple steps:

1. **Prepare Your DVD Player:** Ensure your DVD player is connected to your television or display device and is powered on. Refer to your DVD player's manual for specific connection instructions if needed.
2. **Open Disc Tray:** Press the "Open/Close" button on your DVD player to open the disc tray.
3. **Insert DVD:** Carefully place the "Best of Big Blue Live" DVD into the disc tray with the label side facing up. Avoid touching the playback surface of the disc.
4. **Close Disc Tray:** Press the "Open/Close" button again to close the disc tray. The DVD player should automatically begin reading the disc.

## OPERATION

---

Once the DVD is loaded, you can navigate its content using your DVD player's remote control.

- **Main Menu:** After loading, the DVD will typically display a main menu. Use the arrow keys on your remote to highlight options such as "Play Movie," "Scene Selection," "Subtitles," or "Audio Settings."
- **Play Movie:** Select "Play Movie" or a similar option to start the main program.
- **Scene Selection:** If available, "Scene Selection" allows you to jump to specific segments of the documentary.
- **Subtitles:** To enable or disable subtitles, select the "Subtitles" option from the main menu or use the "Subtitle" button on your remote. English subtitles are available.
- **Audio Settings:** Adjust audio tracks if multiple options are present (e.g., stereo, surround sound).
- **Playback Controls:** Use standard remote control buttons for playback (Play, Pause, Stop, Fast Forward, Rewind, Skip Chapter).

## MAINTENANCE

---

Proper care of your DVD will ensure its longevity and optimal performance.

- **Handling:** Always hold the DVD by its edges or by placing a finger through the center hole. Avoid touching the shiny playback surface.
- **Cleaning:** If the disc becomes dirty or smudged, gently wipe it with a soft, lint-free cloth. Wipe from the center of the disc outwards in a straight line, not in a circular motion. Do not use abrasive cleaners or solvents.
- **Storage:** Store the DVD in its original case, away from direct sunlight, extreme temperatures, and high humidity.
- **Avoid Scratches:** Keep the disc away from sharp objects or rough surfaces that could cause scratches.

## TROUBLESHOOTING

---

If you encounter issues while playing your DVD, consider the following common solutions:

- **Disc Not Playing/Loading:**
  - Ensure the disc is inserted correctly with the label side up.
  - Check if the disc is clean and free of smudges or scratches. Clean if necessary.
  - Try playing another DVD to confirm your DVD player is functioning correctly.
  - Restart your DVD player and television.
- **Skipping or Freezing:**
  - Clean the disc thoroughly as described in the Maintenance section.
  - Inspect the disc for deep scratches or damage. Severely damaged discs may not play correctly.
  - Ensure your DVD player is on a stable surface to prevent vibrations.
- **No Audio/Video:**
  - Verify that all cables connecting your DVD player to your television are securely attached.
  - Check the input source on your television to ensure it is set to the correct input for your DVD player.
  - Adjust the volume on both your television and DVD player.
  - Ensure the DVD player is not muted.

## SPECIFICATIONS

---

<b>Title</b>	Best of Big Blue Live
<b>Brand/Studio</b>	PBS (Direct)
<b>Model Number</b>	35221740
<b>ASIN</b>	B0152AW1MM
<b>MPAA Rating</b>	PG (Parental Guidance Suggested)
<b>Media Format</b>	NTSC, Widescreen
<b>Run Time</b>	1 hour
<b>Release Date</b>	February 16, 2016
<b>Subtitles</b>	English
<b>Number of Discs</b>	1
<b>Product Dimensions</b>	0.7 x 7.5 x 5.4 inches; 2.72 ounces

## DISCLAIMER

---

This manual is for informational purposes only. The manufacturer and distributor are not responsible for any damage or loss caused by improper use or handling of the DVD. All rights reserved.