

Duravit 002019

# Duravit ME by Starck Compact Toilet Seat (Model 002019) Instruction Manual

Model: 002019 | Brand: Duravit

## 1. PRODUCT OVERVIEW

This manual provides instructions for the Duravit ME by Starck Compact Toilet Seat, designed to complement various Duravit toilet designs. Key features include a soft-close lid mechanism and a secure mounting assembly for straightforward installation.

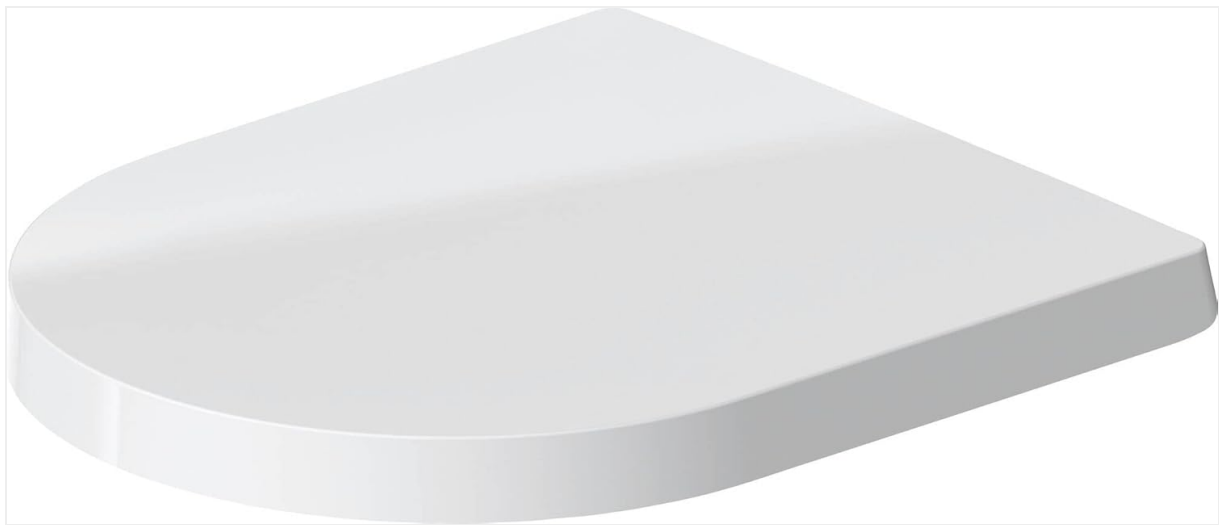


Figure 1: Top view of the Duravit ME by Starck Compact Toilet Seat.

## 2. SPECIFICATIONS

Brand	Duravit
Model Number	002019
Color	White
Material	Plastic

Style	ME by Starck
Shape	D-Shaped
Product Dimensions	17.38"L x 10.63"W (44.15 cm L x 27 cm W)
Item Weight	4.64 pounds (2.11 Kilograms)
Part Number	0020190000

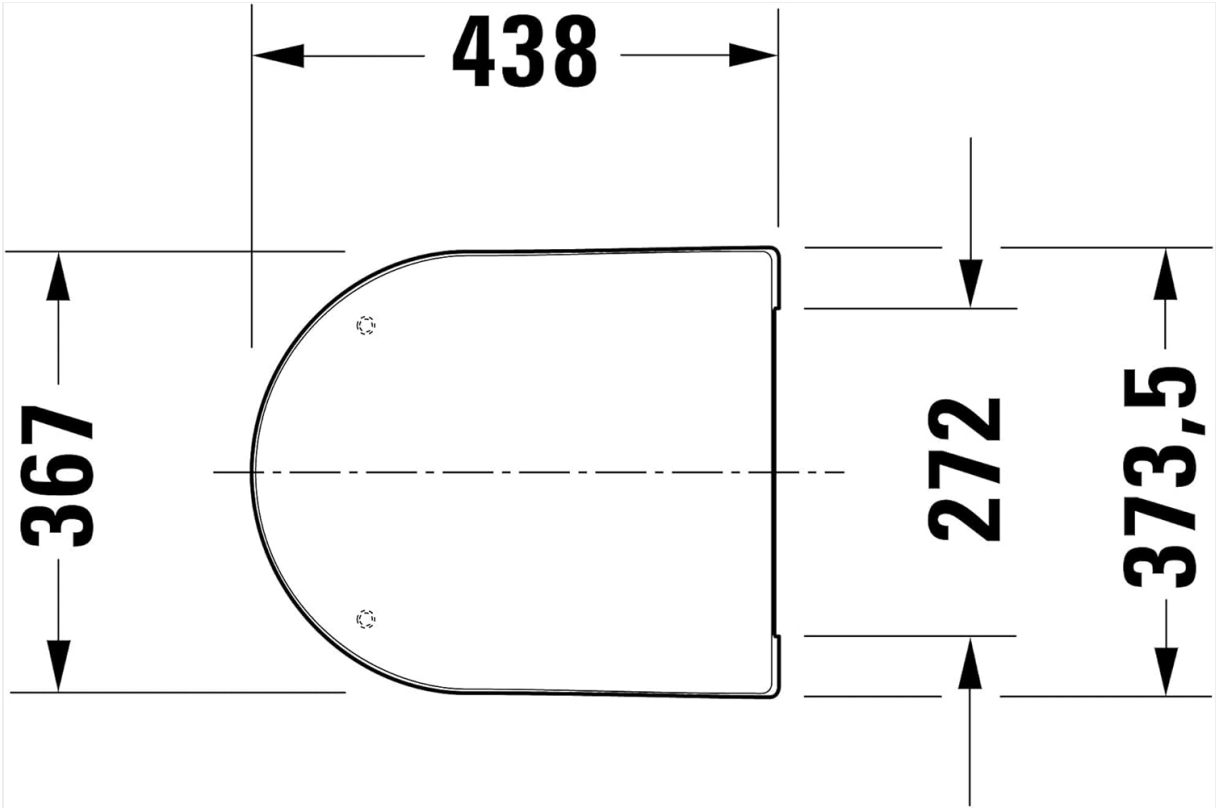


Figure 2: Technical drawing illustrating the dimensions of the toilet seat (measurements in millimeters).

### 3. SETUP AND INSTALLATION

The Duravit ME by Starck Compact Toilet Seat features a secure mounting assembly designed for fast and easy installation. While specific step-by-step instructions are typically provided with the product packaging, the general process involves:

- Preparation:** Ensure the toilet bowl is clean and free from any old seat residue.
- Positioning:** Align the seat's mounting posts with the holes on the toilet bowl.
- Securing:** Use the provided hardware (hinges, bolts, washers, nuts) to firmly attach the seat to the toilet. Tighten securely but avoid over-tightening to prevent damage.
- Testing:** Gently lower the seat and lid to ensure the soft-close mechanism functions correctly and the seat is stable.



Figure 3: Detail of the robust hinge mechanism for secure attachment.



Figure 4: Underside of the toilet seat, highlighting the mounting points and bumpers.

## 4. OPERATING INSTRUCTIONS

---

This toilet seat is equipped with a soft-close mechanism, designed for quiet and gentle operation. To operate:





- **Lowering the Lid/Seat:** Gently push the lid or seat downwards. The soft-close hinges will engage, allowing the lid/seat to descend slowly and silently without slamming.
- **Raising the Lid/Seat:** Lift the lid or seat upwards to the desired position. It will remain open until gently pushed down.



Figure 5: Visual representation of the soft-close feature in action, demonstrating a gentle descent.

## 5. MAINTENANCE AND CARE



	<p><a href="#">Duravit SensoWash® Starck f Lite</a></p> <p>Duravit SensoWash® Starck f Lite</p>
	<p><a href="#">Duravit SensoWash Starck f Mounting Instructions</a></p> <p>Detailed mounting and installation guide for the Duravit SensoWash Starck f shower toilet unit, covering safety, electrical, and water connection procedures.</p>
	<p><a href="#">Duravit Starck 1 Toilet Seat SoftClose Installation Guide</a></p> <p>Official installation guide for the Duravit Starck 1 toilet seat with SoftClose feature. Provides step-by-step instructions and product details for mounting the toilet seat.</p>
	<p><a href="#">Duravit Spare Parts Catalog</a></p> <p>Comprehensive catalog of Duravit spare parts for various toilet models, including troubleshooting tips and purchasing information.</p>