

## Moser 1871 ChromStyle Pro

# Moser 1871 ChromStyle Pro Professional Hair Clipper User Manual

Model: 1871 ChromStyle Pro

## 1. SAFETY INFORMATION

---

Please read all instructions carefully before using the Moser 1871 ChromStyle Pro Professional Hair Clipper. Retain this manual for future reference.

- **Electrical Safety:** This appliance is designed for operation with 100-240V, 50-60 Hz power. Ensure the plug-in transformer is compatible with your local power supply. An EU to US plug converter is supplied for use in regions requiring it. Do not use the appliance near water or while bathing. Disconnect from power before cleaning.
- **Blade Handling:** The clipper features sharp Diamond Blades. Handle with care to prevent injury. Do not touch the blades while the clipper is operating.
- **Children and Supervision:** Keep the appliance out of reach of children. This appliance is not intended for use by persons with reduced physical, sensory, or mental capabilities, or lack of experience and knowledge, unless they have been given supervision or instruction concerning use of the appliance by a person responsible for their safety.
- **Maintenance:** Only use original Moser replacement parts and accessories. Do not attempt to repair the appliance yourself. Contact authorized service personnel for repairs.

## 2. PACKAGE CONTENTS

---

Verify that all items listed below are included in your package:

- Moser 1871 ChromStyle Pro Professional Hair Clipper (Li-Ion, Diamond Blade)
- 4 Slide-on Attachment Combs (3 mm, 6 mm, 9 mm, 12 mm)
- Charging Stand
- Energy-efficient Plug-in Transformer (100-240V)
- EU to US Plug Converter (if applicable)

- Cleaning Brush
- Blade Oil

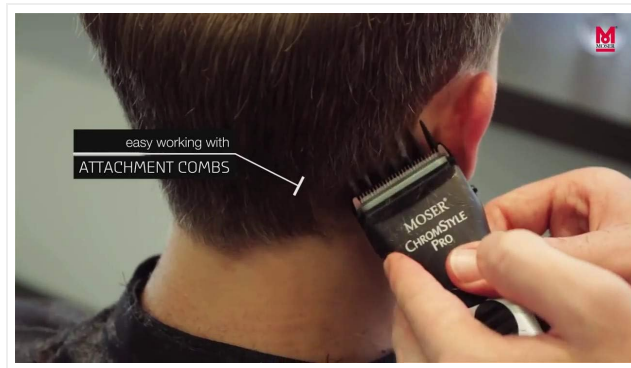


Image: The Moser ChromStyle Pro hair clipper shown with its complete set of accessories, including the charging stand, power adapter, four attachment combs, cleaning brush, and oil bottle.

## 3. SETUP

---

### 3.1 Initial Charging

1. Connect the plug-in transformer to the charging stand.
2. Plug the transformer into an appropriate electrical outlet (100-240V). Use the provided EU to US converter if necessary.
3. Place the clipper onto the charging stand. Ensure it is seated correctly.
4. The LED indicator lights on the clipper will illuminate to show charging status. A full charge takes approximately 60 minutes.
5. For optimal battery life, allow the clipper to fully charge before its first use. The Li-Ion battery has no memory effect.



Image: A close-up of the Moser ChromStyle Pro clipper displaying its red, yellow, and green LED indicator lights, which communicate battery charge level and charging status.

### 3.2 Attaching Combs

The clipper comes with four slide-on attachment combs for various cutting lengths.

1. Ensure the clipper is turned off.
2. Select the desired attachment comb (3mm, 6mm, 9mm, or 12mm).
3. Align the comb with the clipper blade and slide it firmly into place until it clicks.
4. To remove, gently push the comb upwards and off the blade.

## 4. OPERATING INSTRUCTIONS

---

### 4.1 Powering On/Off

The clipper can be operated corded or cordless.

- **Cordless Operation:** Ensure the clipper is charged. Press the power button to turn on. The battery provides up to 90 minutes of operating time on a full charge.
- **Corded Operation:** Connect the clipper to the charging stand, and the charging stand to the power outlet. The clipper can be used while charging.

### 4.2 Adjusting Cutting Length

The clipper features an adjustable cutting length from 0.7 mm to 3 mm without an attachment comb. This is typically adjusted via a lever or switch on the side of the clipper body.

- To adjust, move the lever/switch to the desired position.
- For longer cuts, attach one of the provided combs (3mm, 6mm, 9mm, 12mm).

### 4.3 General Usage Tips

- Always ensure hair is clean and dry before clipping for best results.
- Start with a longer attachment comb and gradually reduce the length if desired.
- Move the clipper against the direction of hair growth for an even cut.
- The chip-controlled motor maintains constant cutting power regardless of battery charge level or hair type.



Image: A person demonstrating the use of the Moser ChromStyle Pro hair clipper with an attachment comb, highlighting its ease of use for various hair lengths.

## 5. MAINTENANCE

---

### 5.1 Cleaning the Blade Set

Regular cleaning ensures optimal performance and extends the life of your clipper.

1. Turn off the clipper and disconnect it from the power supply.
2. Remove any attachment comb.
3. Use the provided cleaning brush to remove loose hairs from the blade set.
4. The Diamond Blade set is designed for quick-change. Refer to the specific instructions for detaching and reattaching the blade set for thorough cleaning if necessary.

## 5.2 Oiling the Blades

After each cleaning, or at least once a week, apply a few drops of the supplied blade oil to the cutting edges of the blade set.

1. Apply 1-2 drops of oil to the top and bottom blades.
2. Turn on the clipper for a few seconds to distribute the oil evenly.
3. Wipe off any excess oil with a soft cloth.

The Diamond Blade is highly resistant and requires less maintenance compared to standard blade sets, offering up to 40 times more durability.



Image: A detailed view of the Moser ChromStyle Pro's Diamond Blade, highlighting its precision cutting teeth and robust construction.

## 6. TROUBLESHOOTING

---

- **Clipper not turning on:** Ensure the battery is charged. If operating corded, check the power connection and outlet.
- **Poor cutting performance:** Clean the blade set thoroughly and apply oil. Ensure no hair is trapped between the blades. Check if the blade set is correctly attached.
- **Battery not charging:** Verify the charging stand and transformer are properly connected and the power outlet is functional. Ensure the clipper is correctly seated in the charging stand.
- **Excessive noise or vibration:** This may indicate a need for cleaning and oiling, or a potential issue with the blade set. If the problem persists after maintenance, contact customer support.

## 7. SPECIFICATIONS

---

Feature	Specification
Type	Professional Cord/Cordless Hair Clipper
Blade Set	Diamond Blade (Quick-Change)
Top Blade Width	46 mm
Cutting Length	0.7 - 3 mm (without comb)
Operation Type	Corded/Rechargeable
Drive	DC motor with sound proofing, approx. 5500 rpm
Operating Voltage	100-240V, 50-60 Hz via plug-in transformer
Operation Time (Battery)	90 min.
Charging Time	60 min. quick charge
Optical Information System	LED indicators
Acoustic Information System	Signal-tones
Dimensions	178 x 46 x 50 mm
Weight	290 g
Model Number	1871-0069

## 8. WARRANTY AND SUPPORT

---

Moser products are manufactured to high quality standards. For warranty information, please refer to the documentation provided with your purchase or contact Moser customer support directly. Keep your proof of purchase for any warranty claims.

For technical assistance, spare parts, or service, please visit the official Moser website or contact their authorized service centers.