

Manuals+

[Q & A](#) | [Deep Search](#) | [Upload](#)

[manuals.plus](#) /

- › [Weiser](#) /
- › [Weiser Smart Key Deadbolt Double Cylinder K4 User Manual](#)

Weiser GD9371X3BRK4SMTMS6LS2R2

Weiser Smart Key Deadbolt Double Cylinder K4 User Manual

Model: GD9371X3BRK4SMTMS6LS2R2

PRODUCT OVERVIEW

This manual provides instructions for the Weiser Smart Key Deadbolt Double Cylinder K4, model GD9371X3BRK4SMTMS6LS2R2. This deadbolt features the SmartKey cylinder technology, designed for enhanced security and ease of rekeying.





Image: Weiser Smart Key Deadbolt Double Cylinder K4. This image displays the two sides of the polished brass deadbolt. Both sides feature a keyway for operation. The bottom deadbolt clearly shows the "WEISER" brand name engraved on its face.

The SmartKey cylinder eliminates traditional pins and springs, offering instant rekeying functionality. It is engineered to be bump-resistant and highly pick-resistant. A rekeying learning tool is included with each lock, enabling the user to rekey the lock in three simple steps. This double cylinder deadbolt requires a key for activation from both the interior and exterior sides. It is designed to fit all standard doors and features a full 1-inch throw deadbolt with a 6-way latch mechanism.

SETUP AND INSTALLATION

Proper installation is crucial for the optimal performance and security of your Weiser Smart Key Deadbolt. Ensure you have the necessary tools before beginning the installation process.

Tools Required:

- Phillips head screwdriver
- Measuring tape
- Pencil

Installation Steps:

1. **Prepare the Door:** Verify that your door has the correct bore holes and backset. This deadbolt fits standard doors.
2. **Install the Latch:** Insert the latch into the edge of the door. Ensure the latch bolt faces the correct direction (beveled edge towards the door frame). Secure with screws.
3. **Install the Exterior Cylinder:** Place the exterior cylinder through the bore hole, ensuring the tailpiece aligns with the latch mechanism.
4. **Install the Interior Assembly:** Position the interior assembly over the tailpiece and secure it to the exterior cylinder using the provided screws.
5. **Test Operation:** Insert a key into both the exterior and interior cylinders and turn to ensure the deadbolt extends and retracts smoothly.

For detailed visual instructions, refer to the installation guide included in the product packaging.

OPERATING INSTRUCTIONS

The Weiser Smart Key Deadbolt is operated using a key from both sides of the door.

Locking the Deadbolt:

- Insert the key fully into the keyway on either the interior or exterior side of the deadbolt.
- Turn the key clockwise until the deadbolt bolt is fully extended into the door frame.
- Remove the key.

Unlocking the Deadbolt:

- Insert the key fully into the keyway on either the interior or exterior side of the deadbolt.
- Turn the key counter-clockwise until the deadbolt bolt is fully retracted from the door frame.
- Remove the key.

SmartKey Rekeying Functionality:

The SmartKey feature allows you to rekey your lock to a new key in seconds, providing convenience and enhanced security. This is particularly useful if you lose a key or wish to consolidate multiple locks to a single key.

1. **Insert Current Key:** Insert your currently working key (the "old" key) fully into the deadbolt cylinder and turn it 90 degrees clockwise.
2. **Insert Rekeying Tool:** While the old key is still turned, insert the SmartKey rekeying tool (included with the lock) into the small hole next to the keyway. Apply firm pressure until you feel a click.
3. **Remove Old Key:** Remove the old key while keeping the rekeying tool inserted.
4. **Insert New Key:** Insert your new key (the key you wish to use from now on) fully into the cylinder.
5. **Remove Rekeying Tool:** Remove the rekeying tool.
6. **Test New Key:** Turn the new key 90 degrees counter-clockwise to return the cylinder to its original position. Test the new key by locking and unlocking the deadbolt several times. Ensure the old key no longer operates the lock.

Note: The rekeying process permanently changes the lock's keying. Ensure you have the new key readily available before starting the process.

MAINTENANCE

Regular maintenance ensures the longevity and smooth operation of your Weiser deadbolt.

- **Cleaning:** Clean the exterior of the deadbolt with a soft, damp cloth. Avoid abrasive cleaners or solvents that could damage the finish.
- **Lubrication:** Periodically apply a small amount of graphite lubricant or a silicone-based lubricant specifically designed for locks into the keyway. Do not use oil-based lubricants as they can attract dirt and debris.
- **Screw Tightness:** Check mounting screws periodically and tighten if necessary to ensure the deadbolt remains securely fastened to the door.

TROUBLESHOOTING

If you encounter issues with your Weiser Smart Key Deadbolt, refer to the following common problems and solutions:

Problem	Possible Cause	Solution
Key does not insert or turn smoothly.	Debris in keyway, worn key, or lack of lubrication.	Clean keyway with compressed air. Try a new or spare key. Apply graphite or silicone lubricant to the keyway.
Deadbolt does not extend or retract fully.	Misalignment of lock components, loose screws, or door/frame issues.	Check and tighten all mounting screws. Ensure the strike plate on the door frame is properly aligned with the deadbolt. Verify the door frame is not warped.
SmartKey rekeying fails.	Rekeying tool not fully inserted, old key not fully turned, or incorrect new key.	Ensure the old key is fully inserted and turned 90 degrees. Press the rekeying tool firmly until a click is felt. Use a new, uncut key for the rekeying process.

If the problem persists after attempting these solutions, contact Weiser customer support for further assistance.

SPECIFICATIONS

- Brand:** Weiser
- Model Name:** GD9371X3BRK4SMTMS6LS2R2
- Lock Type:** Key Lock (Double Cylinder Deadbolt)
- Special Feature:** SmartKey Rekeying, Activating Lock (Keyed Entry on both sides)
- Material:** Brass
- Color:** Gold
- Finish Type:** Polished
- Item Dimensions (L x W x H):** 4.5 x 8.9 x 3 inches
- Item Weight:** 1.16 pounds
- UPC:** 059184334807
- Latch:** 6-way latch
- Deadbolt Throw:** Full 1 inch
- Compatibility:** Fits all standard doors

WARRANTY AND SUPPORT

Weiser products are manufactured to the highest standards of quality and technology. For specific warranty information regarding your GD9371X3BRK4SMTMS6LS2R2 Smart Key Deadbolt, please refer to the warranty card included with

your product packaging or visit the official Weiser website.

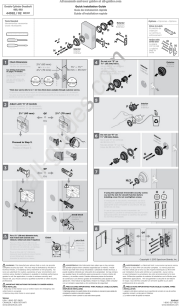
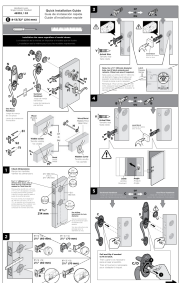
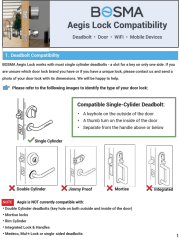
For technical support, troubleshooting assistance, or to inquire about replacement parts, please contact Weiser Customer Service:

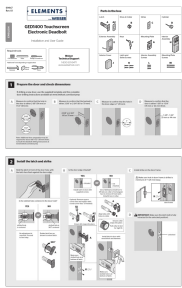
- **Website:** www.weiserlock.com
- **Phone:** Refer to the official website for regional contact numbers.

When contacting support, please have your product model number (GD9371X3BRK4SMTMS6LS2R2) and purchase date available.



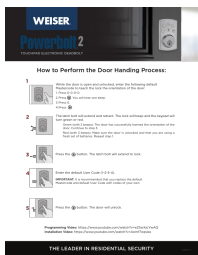
Related Documents - GD9371X3BRK4SMTMS6LS2R2

	<p>Weiser/Kwikset Double Cylinder Deadbolt 985, 992 Installation Guide</p> <p>Concise installation and drilling instructions for Weiser and Kwikset Double Cylinder Deadbolt models 985, 992, and 44592/02 BP/CP. Includes step-by-step guidance and safety precautions.</p>
	<p>Kwikset & Weiser Handleset Installation Guide: Model 48332/03</p> <p>Comprehensive installation guide for Kwikset and Weiser door handlesets, including single cylinder deadbolts. Provides step-by-step instructions, part identification, and important safety information for a successful installation.</p>
	<p>Bosma Aegis Lock Compatibility Guide</p> <p>A comprehensive guide detailing the compatibility of the Bosma Aegis Lock with various deadbolt brands and models, door specifications, WiFi requirements, and mobile device support.</p>



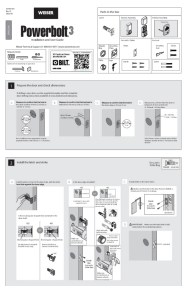
[Weiser GED1400 Touchscreen Electronic Deadbolt Installation and User Guide](#)

This guide provides step-by-step instructions for installing and using the Weiser GED1400 Touchscreen Electronic Deadbolt. It covers door preparation, latch and strike installation, exterior and interior assembly, setting locking and unlocking direction, and quick setup features.



[Weiser Powerbolt 2 Electronic Deadbolt: Installation and Usage Guide](#)

Comprehensive guide for the Weiser Powerbolt 2 electronic deadbolt, covering door handing, adding user codes, and removing user codes. Features SmartKey technology.



[Weiser GED250 Powerbolt Electronic Deadbolt Installation and User Guide](#)

Comprehensive guide for installing and using the Weiser GED250 Powerbolt Electronic Deadbolt with SmartKey technology. Includes step-by-step instructions, programming features, troubleshooting, and system alerts.