

## Bloody B740A

# Bloody Gaming B740 Wired Optical Gaming Keyboard Instruction Manual

Model: B740A

## INTRODUCTION

The Bloody Gaming B740 Wired Optical Gaming Keyboard is designed for high-performance gaming, featuring optical switches for rapid response times and an ergonomic wrist rest for comfort during extended use. This manual provides comprehensive instructions for setup, operation, and maintenance of your new keyboard.

## KEY FEATURES

- **Ergonomic Integrated Wrist Rest:** Designed for comfortable typing and gaming sessions, reducing wrist strain.
- **LED Backlit Gaming Keyboard:** Features pre-set animations and static lighting modes with adjustable brightness. Note: All rows are LED, not RGB, and lights are static.
- **Anti-Ghosting & Durability:** Equipped with award-winning Optical Gaming Switches (Light Strike) for 0.2ms response times. Features floating ABS Keycaps, 8 extra silicon keycaps, and is fully water resistant. Offers 100% anti-ghosting and full N-key rollover.
- **PC Optical Gaming Keyboard Compatibility:** Compatible with Windows 10, 8, 7, Vista, XP, and limited Mac OS support. Works with major computer brands and gaming PCs.
- **Console Compatibility:** Compatible with Xbox One for keyboard-enabled games.

## PACKAGE CONTENTS

- Bloody Gaming B740 Keyboard
- USB Cable
- 8 Extra Silicon Keycaps (for WASD, etc.)

## SETUP GUIDE

1. **Unpack the Keyboard:** Carefully remove the keyboard and all accessories from the packaging.
2. **Connect to Computer:** Insert the USB cable from the keyboard into an available USB port on your computer.

3. **Driver Installation (Automatic):** The operating system will typically detect and install the necessary drivers automatically. Allow a few moments for this process to complete.
4. **Optional Software Installation:** For advanced customization, macros, and lighting effects, download and install the Bloody software from the official Bloody Gaming website. Refer to the software's documentation for detailed instructions.
5. **Positioning:** Place the keyboard on a stable, flat surface. Utilize the integrated wrist rest for optimal ergonomic comfort.



Image: The Bloody Gaming B740 keyboard, showcasing its full layout and silver-colored frame with an integrated wrist rest.

## OPERATING INSTRUCTIONS

---

### Basic Operation

The Bloody B740 functions as a standard QWERTY keyboard. Simply type as you would with any other keyboard. The optical switches provide a fast and responsive typing experience.

### LED Backlighting Control

The keyboard features pre-set LED lighting modes. Use the Function (FN) key in combination with specific F-keys to control the backlighting:

- **FN + F12:** Cycle through different lighting modes (e.g., static, breathing, off, various pre-set animations).
- **FN + Up Arrow:** Increase LED brightness.
- **FN + Down Arrow:** Decrease LED brightness.



Image: A close-up view of the keyboard's keys illuminated with multi-color backlighting, highlighting the keycap design.

## Gaming Features

- **Anti-Ghosting & N-Key Rollover:** The keyboard supports 100% anti-ghosting and full N-key rollover, ensuring every key press is registered accurately, even during rapid, simultaneous inputs.
- **Optical Switches (Light Strike):** The LK Gen 1 optical switches provide an ultra-fast 0.2ms response time, giving a competitive edge in gaming.
- **FN + F8:** Disable the Windows key to prevent accidental interruptions during gaming.
- **Customizable Keycaps:** The keyboard comes with 8 extra silicon keycaps, typically for WASD and other common gaming keys, which can be swapped for enhanced tactile feel and identification.

# ABS DOUBLE-SHOT KEYCAPS



Image: The Bloody B740 keyboard with some keys, including WASD, replaced with orange silicon keycaps, demonstrating customization options.



Image: A close-up of the keyboard showing two removed keycaps, illustrating their design and how they attach to the switches.



# WATER RESISTANT & 6MM BARRIER



Image: A diagram comparing the 0.2ms response time of Light Strike optical switches to the 30ms response time of traditional metal switches, emphasizing speed.

## MAINTENANCE AND CARE

---

- **Cleaning:** Use a soft, dry cloth to wipe down the keyboard surface. For dust between keys, use compressed air. For stubborn dirt, a slightly damp cloth with mild soap can be used, ensuring no liquid enters the keyboard.
- **Water Resistance:** The B740 is designed to be water/splash resistant. In case of spills, immediately unplug the keyboard, wipe off excess liquid, and allow it to air dry completely before reconnecting. Do not submerge the keyboard.
- **Keycap Replacement:** If you wish to replace keycaps, gently pull them straight up to remove. Align the new keycap with the switch stem and press down firmly until it clicks into place.
- **Storage:** When not in use for extended periods, store the keyboard in a cool, dry place away from direct sunlight.



Image: A close-up of the keyboard with water droplets on the keys, illustrating its water-resistant design and 6mm barrier.

## TROUBLESHOOTING

---

### Keyboard Not Responding:

- Ensure the USB cable is securely connected to both the keyboard and the computer.
- Try connecting the keyboard to a different USB port.
- Restart your computer.
- Test the keyboard on another computer to determine if the issue is with the keyboard or the computer.

### Backlighting Not Working or Dim:

- Press FN + Up Arrow to increase brightness.
- Press FN + F12 to cycle through lighting modes; ensure it's not set to "off".
- Ensure the keyboard is receiving sufficient power from the USB port.

### Keys Not Registering or Double-Typing:

- Check for any debris or foreign objects under the affected keycaps.
- Gently remove and re-seat the keycap.
- If the issue persists, contact customer support.

### Software Issues:

- Ensure you have the latest version of the Bloody software installed from the official website.
- Try reinstalling the software.
- Check for any conflicting software on your system.

## SPECIFICATIONS

---

Feature	Detail
Model Number	B740A
Product Dimensions	8.27 x 19.49 x 1.65 inches
Item Weight	3.11 pounds
Manufacturer	A4tech
Connectivity Technology	USB
Keyboard Description	QWERTY
Number of Keys	104
Special Features	Backlit, Ergonomic, Water Resistant, Wrist Rest
Color	Silver
Material	Acrylonitrile Butadiene Styrene
Switch Type	Optical (Light Strike)
Response Time	0.2ms

## WARRANTY AND SUPPORT

For warranty information and technical support, please refer to the official Bloody Gaming website or contact their customer service directly. Keep your purchase receipt as proof of purchase for warranty claims.

**Manufacturer:** A4tech

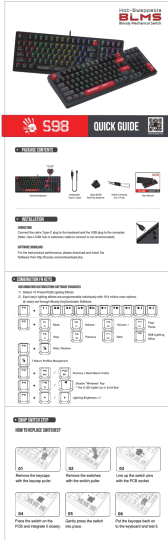
**Brand:** Bloody

**Website:** [www.bloody.com](http://www.bloody.com) (General website, specific support link may vary)



### Related Documents - B740A





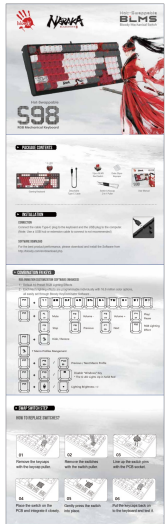
[Bloody S98 Gaming Keyboard Quick Guide](#)

A concise guide to installing and using the Bloody S98 hot-swappable mechanical gaming keyboard, including key combinations and switch replacement instructions.



[BLOODY V-Series Gaming Mice: V7M, V7MA, V8M, V8MA Datasheet](#)

Detailed specifications and features for the BLOODY V-Series gaming mice, including models V7M, V7MA, V8M, and V8MA. Discover optical switches, customizable RGB lighting, high DPI, and advanced gaming performance.



[Bloody S98 Naraka RGB Mechanical Keyboard - User Guide and Features](#)

Comprehensive guide to the Bloody S98 Naraka RGB Mechanical Keyboard, detailing package contents, installation, FN key functions for RGB customization and media control, and a step-by-step guide for swapping switches.

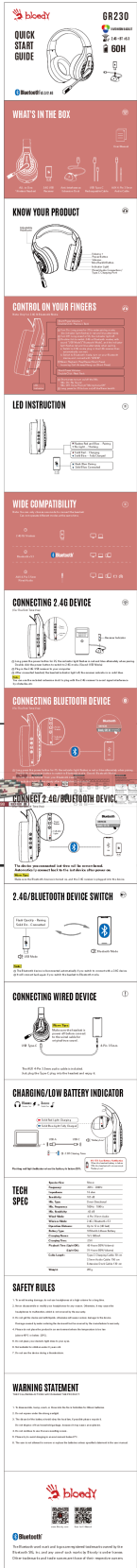


[Bloody S87 Naraka Mechanical Keyboard | Hot-Swappable, Gaming, Red Switches](#)

Explore the Bloody S87 Naraka mechanical gaming keyboard, featuring hot-swappable BLMS Red Plus switches, customizable DIY keycaps, and a detachable Type-C cable. This guide covers package contents, installation, and essential FN key combinations for an enhanced gaming experience.

[Bloody GR230 Wireless Headset Quick Start Guide](#)

Comprehensive guide to setting up and using the Bloody GR230 wireless headset with Bluetooth 5.3 and 2.4G connectivity, including features, controls, compatibility, and technical specifications.



[Bloody S98 Hot-Swappable Mechanical Keyboard Quick Guide](#)

A quick guide to the Bloody S98 hot-swappable mechanical keyboard, covering package contents, installation, FN key combinations, and switch replacement steps.