

## La Crosse Technology 104-1522

# La Crosse Technology 104-1522 8" Round Analog Dial Thermometer User Manual

Model: 104-1522

### 1. INTRODUCTION

This manual provides instructions for the La Crosse Technology 104-1522 8-inch Round Analog Dial Thermometer. This versatile thermometer is designed for both indoor and outdoor use, offering clear and precise temperature readings. Its durable, weather-resistant construction ensures reliable performance across a wide range of environmental conditions.

### 2. PRODUCT FEATURES

- **Versatile Indoor/Outdoor Use:** Suitable for monitoring temperatures in various settings, including homes, offices, garages, and patios.
- **Durable Construction:** Features a weather-resistant plastic frame designed to withstand diverse weather conditions.
- **Easy Installation:** Wall-mountable design with a simple hanging mechanism (nail or screw not included).
- **Maintenance-Free:** Operates without batteries, eliminating the need for replacements.
- **Wide Temperature Range:** Measures temperatures from -60°F to 120°F.
- **Clear Readability:** Large, easy-to-read Fahrenheit scale with a prominent red temperature indicator for quick and accurate readings.

### 3. SETUP

The La Crosse Technology 104-1522 thermometer is designed for straightforward installation. No batteries or complex wiring are required.

#### 3.1 Mounting Location

- For outdoor use, select a location that is protected from direct sunlight and precipitation to ensure the most accurate temperature readings. A shaded area is ideal.
- For indoor use, choose a central location away from direct heat sources (e.g., heaters, direct sunlight through a window) or cooling vents.

#### 3.2 Installation Steps

1. Identify the hanging slot on the back of the thermometer.
2. Secure a nail or screw (not included) into your chosen mounting surface, ensuring it is strong enough to hold the lightweight thermometer.
3. Hang the thermometer onto the nail or screw using the designated slot.

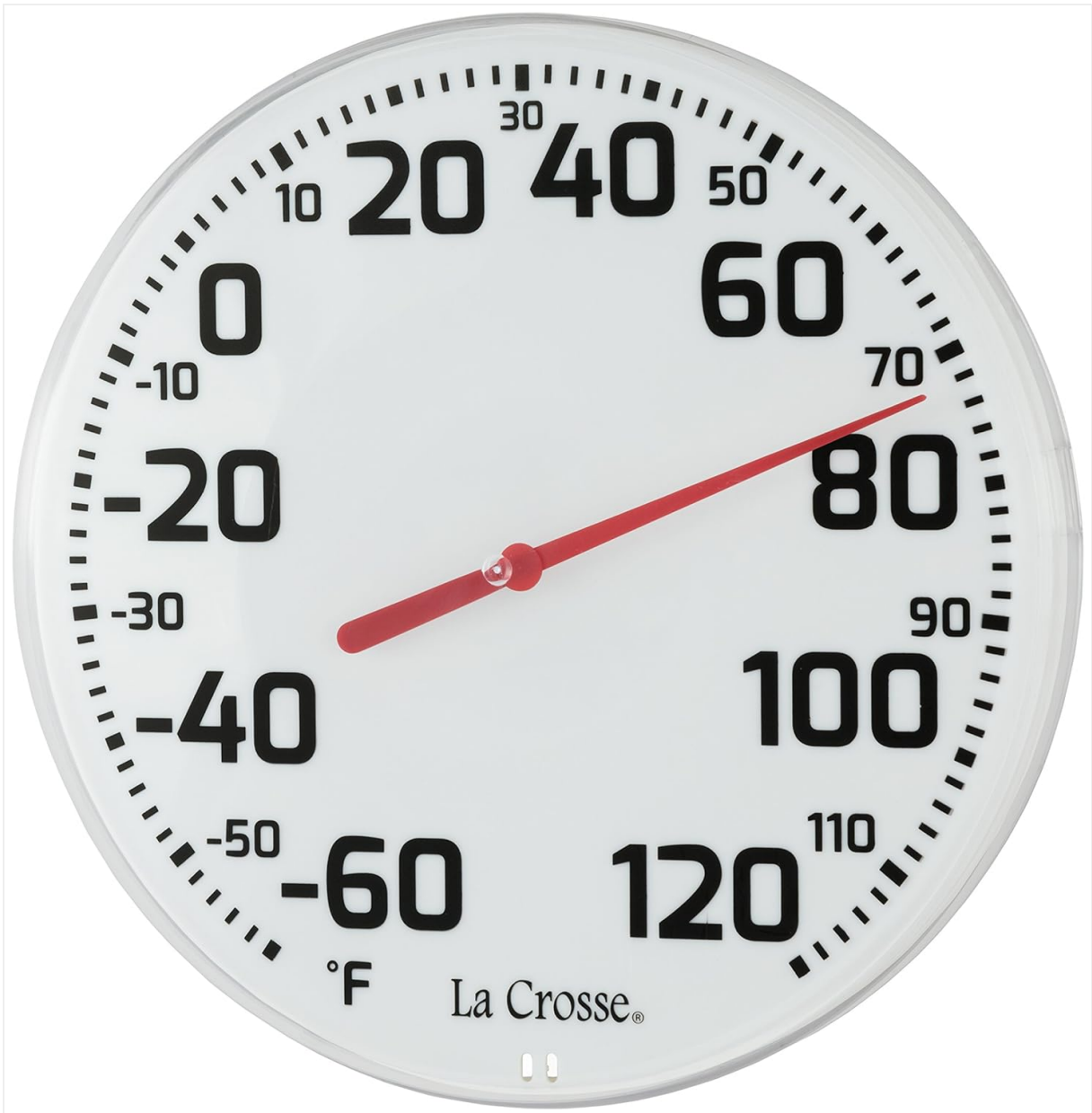


Figure 1: Rear view of the thermometer, highlighting the integrated hanging slot for easy wall mounting.

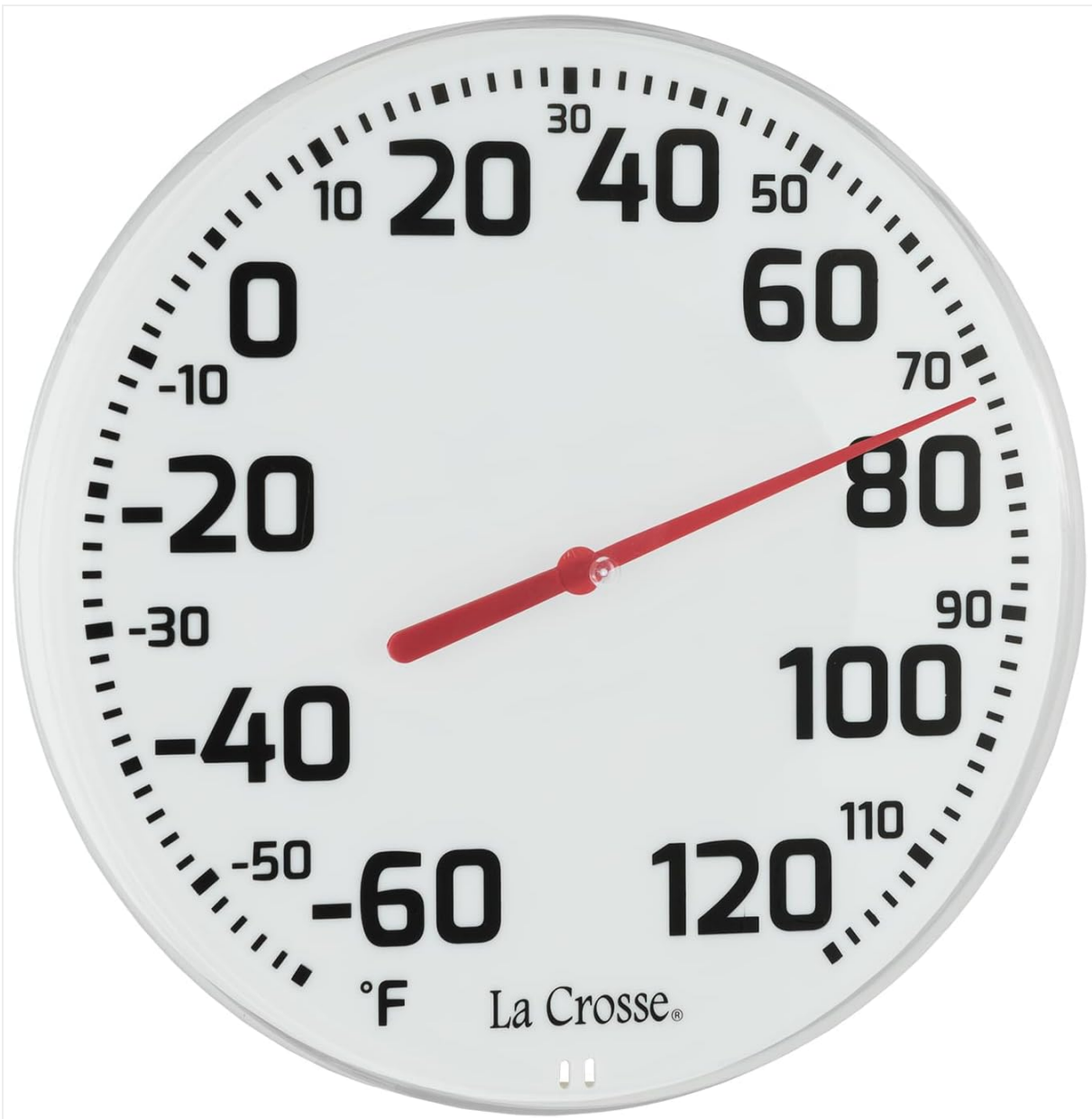


Figure 2: The thermometer installed on a wooden fence, demonstrating its outdoor placement.

#### 4. OPERATING INSTRUCTIONS

This analog thermometer operates automatically without any user input once installed. The internal bimetallic coil expands and contracts with temperature changes, moving the red indicator needle to display the current temperature.

##### 4.1 Reading the Temperature

- Observe the red needle on the dial.
- The needle points to the current temperature in Fahrenheit (°F) on the outer scale.
- The large numbers and clear markings ensure easy readability from a distance.

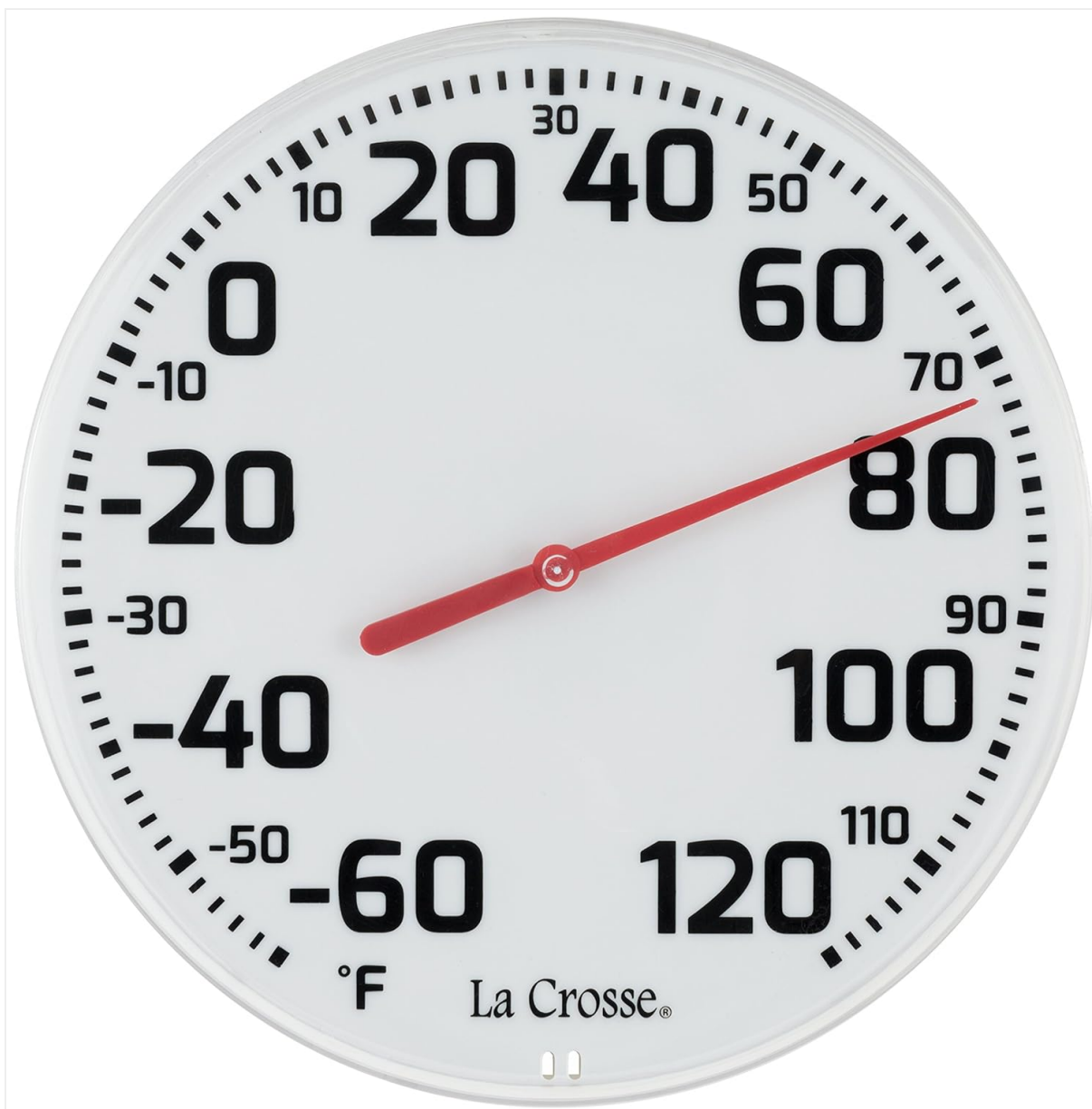


Figure 3: Front view of the thermometer, displaying the large, easy-to-read temperature scale and red indicator needle.

## 5. MAINTENANCE

The La Crosse Technology 104-1522 thermometer requires minimal maintenance.

- **Cleaning:** Wipe the thermometer clean with a soft, damp cloth as needed. Avoid using harsh chemicals or abrasive cleaners, which could damage the finish or the clear dial cover.
- **Inspection:** Periodically check the mounting to ensure the thermometer remains securely in place.

## 6. TROUBLESHOOTING

If you experience issues with your thermometer, consider the following:

- **Inaccurate Readings:** Ensure the thermometer is not exposed to direct sunlight, strong winds, or direct heat/cold sources, as these can affect accuracy. Analog thermometers may require occasional calibration if readings appear consistently off. Some users have found success by gently adjusting the needle or a small screw on the back, but this should be done with care and only if comfortable.
- **Environmental Factors:** Extreme weather conditions can temporarily impact the responsiveness of analog thermometers. Allow time for the thermometer to acclimate to stable conditions.

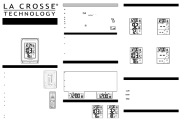





## 7. SPECIFICATIONS

- **Product Dimensions:** 8 x 1 x 8 inches
- **Item Weight:** 8 ounces
- **Model Number:** 104-1522
- **Temperature Range:** -60°F to 120°F
- **Material:** Weather-resistant plastic frame
- **Power Source:** No batteries required
- **Mounting:** Wall-mountable

## 8. WARRANTY AND SUPPORT

For warranty information or technical support regarding your La Crosse Technology 104-1522 thermometer, please refer to the manufacturer's official website or contact their customer service department. La Crosse Technology products are designed with quality and customer satisfaction in mind, offering support and resources for their weather instruments.

## Related Documents - 104-1522

	<p><a href="#">La Crosse 308-1410GR Wireless Thermometer Instruction Manual</a></p> <p>Comprehensive instruction manual for the La Crosse 308-1410GR Wireless Thermometer, detailing setup, operation, features like indoor/outdoor temperature monitoring, MIN/MAX readings, time setting, and troubleshooting. Includes specifications, care instructions, warranty information, and FCC compliance details.</p>
	<p><a href="#">La Crosse WS6824 Weather Station User Manual</a></p> <p>Comprehensive user manual for the La Crosse WS6824 weather station, covering installation, setup, features, technical specifications, and consumer information. Learn how to use your weather station for accurate temperature, humidity, and weather forecasts.</p>
	<p><a href="#">La Crosse Technology Wireless 868 MHz Temperature Station Instruction Manual</a></p> <p>Comprehensive instruction manual for the La Crosse Technology Wireless 868 MHz Temperature Station, detailing its features, setup, operation, battery replacement, troubleshooting, and specifications.</p>
	<p><a href="#">La Crosse Technology T83639v2 Wireless Temperature Station User Manual</a></p> <p>User manual for the La Crosse Technology T83639v2 Wireless Temperature Station. Provides instructions on setup, operation, features like temperature alerts, time settings, sensor search, factory reset, specifications, care, and warranty information.</p>
	<p><a href="#">La Crosse Technology 308-1911v2 Indoor Temperature &amp; Humidity Station Instruction Guide</a></p> <p>Instruction guide for the La Crosse Technology 308-1911v2 Indoor Temperature &amp; Humidity Station, covering setup, features, settings, alerts, records, specifications, care, and warranty information.</p>
	<p><a href="#">La Crosse WS-1025U Outdoor Window Thermometer User Manual and Setup Guide</a></p> <p>Detailed instructions and specifications for the La Crosse WS-1025U Outdoor Window Thermometer, including setup, positioning, button functions, and maintenance.</p>

