

TOYOTOMI LR-680F

TOYOTOMI Kerosene Fan Heater LR-680F(B) Instruction Manual

Model: LR-680F(B) | Brand: TOYOTOMI

[Overview](#) [Setup](#) [Operation](#) [Safety Information](#) [Product](#)
[Maintenance](#) [Troubleshooting](#) [Specifications](#) [Warranty & Support](#)

INTRODUCTION

Thank you for purchasing the TOYOTOMI Kerosene Fan Heater LR-680F(B). This manual provides important information for the safe and efficient use of your heater. Please read it thoroughly before operation and keep it for future reference.

IMPORTANT SAFETY INFORMATION

Always follow these basic safety precautions to reduce the risk of fire, electric shock, and injury.

- Use only **kerosene** as fuel. Never use gasoline, benzene, or other flammable liquids.
- Ensure adequate ventilation in the room during operation to prevent carbon monoxide poisoning.
- Do not place the heater near flammable materials, curtains, or furniture. Maintain a safe distance from walls and other objects.
- Do not operate the heater in areas where flammable vapors or dust may be present.
- Keep children and pets away from the heater.
- Never leave the heater unattended while in operation.
- Do not move the heater while it is operating or hot.
- Always turn off and unplug the heater before refueling, cleaning, or performing maintenance.
- Refuel outdoors or in a well-ventilated area. Avoid overfilling the fuel tank.
- If you smell kerosene or notice any unusual operation, turn off the heater immediately and contact customer support.

PRODUCT OVERVIEW AND FEATURES

The TOYOTOMI LR-680F(B) is an antique-style kerosene fan heater designed for efficient and comfortable heating.

Key Features:

- **Antique Design:** A stylish design that complements various interiors.
- **Eco Mode:** An energy-saving function that gradually lowers the set temperature to 20°C, preventing excessive heating.
- **Eco Burner:** Allows for the efficient use of leftover kerosene from the previous season, minimizing waste.
- **Spill-Proof Refueling:** Designed to prevent spills even if the fuel cap is forgotten or loosely tightened.
- **Easy 2-Lock Fuel Cap:** Provides tactile and audible feedback when locked, ensuring secure closure and clean handling.
- **Double Deodorizing Function:** Reduces odors during operation.
- **Far-Infrared and Gentle Warm Air:** Provides natural warmth that heats the body from the core.
- **High Durability Burner:** Ensures stable combustion and cuts down on odor by burning the source of the smell.
- **Low NOx Emissions:** Environmentally conscious design.
- **Power Saving Support:** Uses minimal power during operation.
- **Cleaning Mode:** Automatically cleans the inside of the burner to prevent malfunctions.
- **Made in Japan:** Manufactured in Japan for quality assurance.
- **3-Year Manufacturer's Warranty:** Provides peace of mind for long-term use.

アンティークなモデル



Image: The TOYOTOMI LR-680F(B) Kerosene Fan Heater, showcasing its antique design in a living room setting.

遠赤外線と微温風

陽だまりのような暖かさのナチュラル暖房

遠赤外線

体の芯まで暖める



微温風

温風が苦手な人も
快適

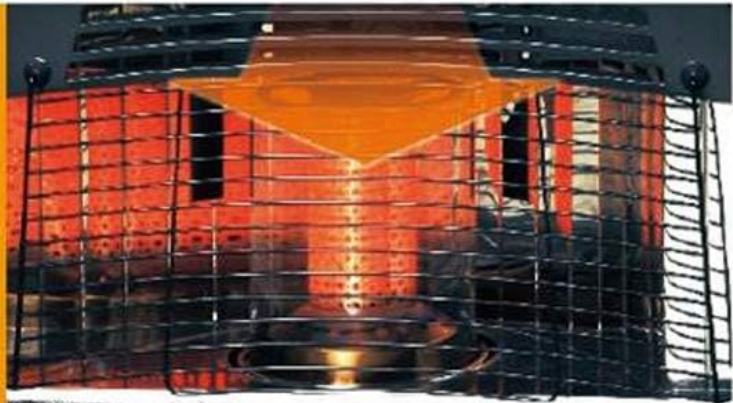


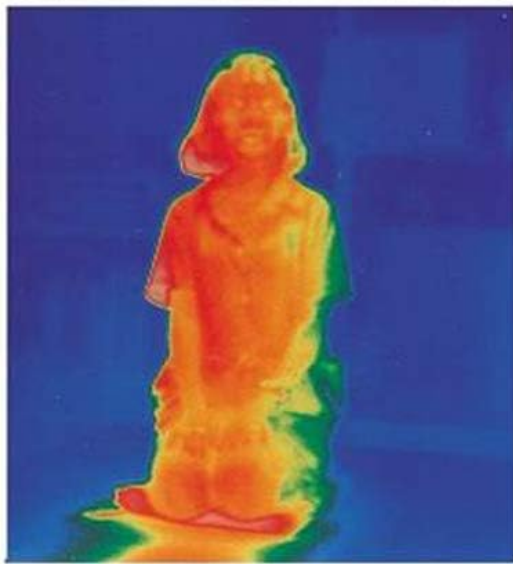
Image: Illustration explaining the dual heating method of far-infrared and gentle warm air, providing natural warmth.

サーモグラフによる体温変化

遠赤外線+赤外線 + **微温風** は
温風式に比べ体温が高くなっています。

(当社同一カロリー比較)

遠赤外線・赤外線+微温風式



温風式

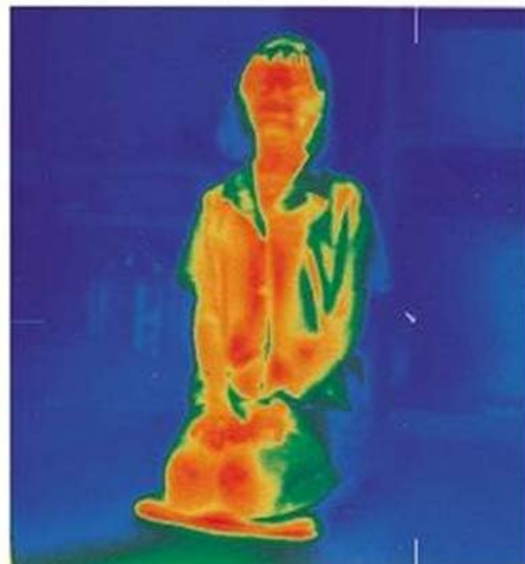


Image: Thermograph comparison demonstrating higher body temperature with far-infrared + warm air heating compared to conventional warm air heating.

高耐久バーナー

限りある資源をムダにしない
前シーズンの残り灯油が使える



低NOx排気

さらに、安定燃焼とにおいの元を燃やしきることでおいをカット。

節電応援

燃焼中は気化ヒーターをいっさい使用しないので省電力。

クリーニング
モード

バーナー内を自動的にキレイにして故障を予防します。

残り灯油でも結露水が混入した場合の変質灯油や不純灯油は絶対使用しないで下さい。

Image: Details of the high durability burner, highlighting features like Eco Burner for using old kerosene, low NOx emissions, power-saving support, and an automatic cleaning mode.

日本製・3年保証



安全にお使い頂くために
日本の工場で生産しております。



安心してお使い頂くために
メーカー3年保証をつけております。

Image: Visual confirmation of the product being Made in Japan and covered by a 3-year manufacturer's warranty, ensuring safety and reliability.

コンクリート (集合) **24** (39.5㎡) 畳まで
小部屋運転時20畳まで(33.0㎡)

木造 (戸建) **18** (29.5㎡) 畳まで
小部屋運転時15畳まで(25.0㎡)



エコモード

灯油節約運転

節電

アイコン点灯中は

わずか **18/19W**
(50/60Hz)

Image: Infographic displaying the heating capacity for concrete (up to 24 tatami) and wooden (up to 18 tatami) rooms, 6.5L tank capacity, Eco Mode for kerosene saving, and power consumption (18/19W).



Image: Detailed diagram showing the dimensions of the heater: 56cm height, 70.4cm width, and 35.5cm depth.

SETUP AND INSTALLATION

1. Unpacking

Carefully remove the heater from its packaging. Retain all packaging materials for future transport or storage. Inspect the heater for any damage. If damaged, do not operate and contact customer support.

2. Placement

- Place the heater on a firm, level, non-combustible surface.
- Ensure adequate clearance from walls, furniture, curtains, and other combustible materials. A minimum clearance of 30 cm (12 inches) from the rear and sides, and 100 cm (40 inches) from the front is recommended.
- Do not place the heater in direct sunlight or near other heat sources.
- Ensure the room has proper ventilation.

3. Fueling

- Use only **clean, clear kerosene**. Do not use old, contaminated, or mixed fuels.
- Turn off the heater and allow it to cool completely before refueling.
- Remove the fuel tank from the heater.

- Refuel the tank outdoors or in a well-ventilated area to avoid inhaling fumes.
- Unscrew the fuel cap. Fill the tank carefully, ensuring not to overfill. The tank capacity is 6.5 liters.
- Securely tighten the Easy 2-Lock fuel cap until you feel and hear it click into place.
- Wipe up any spilled kerosene immediately.
- Return the fuel tank to the heater, ensuring it is properly seated.

OPERATING INSTRUCTIONS

1. Initial Start-up

- After fueling, wait approximately 10-15 minutes for the kerosene to saturate the wick (if applicable, or for the fuel line to prime).
- Plug the power cord into a grounded electrical outlet.
- Press the **Power button** to turn on the heater.
- The heater will initiate a start-up sequence, which may take a few minutes.

2. Adjusting Temperature and Modes

- Use the **Temperature Up/Down buttons** to set your desired room temperature.
- **Eco Mode:** Activate Eco Mode for energy-saving operation. In this mode, the heater will gradually reduce the set temperature to 20°C to prevent overheating and conserve fuel.
- Refer to the control panel display for current settings and operating status.

3. Shutting Down

- Press the **Power button** to turn off the heater.
- The heater will undergo a cool-down cycle before completely shutting off. Do not unplug the heater during this cycle.
- Once completely off, unplug the power cord from the outlet if the heater will not be used for an extended period.

MAINTENANCE

Regular maintenance ensures optimal performance and extends the life of your heater. Always turn off and unplug the heater, and allow it to cool completely before performing any maintenance.

1. General Cleaning

- Wipe the exterior of the heater with a soft, damp cloth. Do not use abrasive cleaners or solvents.
- Keep the air intake and exhaust vents clear of dust and debris. Use a vacuum cleaner to gently remove any build-up.

2. Burner Cleaning Mode

- This heater features an automatic cleaning mode for the burner. Refer to your control panel or specific instructions for activating this mode.
- Regular use of the cleaning mode helps prevent malfunctions and maintains efficient combustion.

3. Fuel Tank Care

- At the end of the heating season, completely drain any remaining kerosene from the fuel tank and the heater's internal reservoir.

- Store the tank in a cool, dry place, away from direct sunlight and heat sources.
- Never store kerosene in the heater during the off-season.

TROUBLESHOOTING

Before contacting customer support, please review the following common issues and their solutions.

Problem	Possible Cause	Solution
Heater does not turn on.	No power, power cord not plugged in, safety switch activated.	Check power connection. Ensure the fuel tank is properly seated. Reset the heater by unplugging and replugging after a few minutes.
Heater turns off unexpectedly.	Low fuel, tip-over switch activated, overheating, poor ventilation.	Check fuel level and refill if necessary. Ensure heater is on a stable surface. Check for obstructions around vents. Ensure adequate ventilation.
Unusual odor during operation.	Poor quality kerosene, dust on burner, insufficient ventilation.	Use fresh, clean kerosene. Run burner cleaning mode. Ensure proper ventilation. If odor persists, discontinue use and contact support.
Error code displayed.	Specific malfunction.	Note the error code and refer to the full user manual (if available) or contact customer support with the code.
Combustion failure (as mentioned in reviews).	Contaminated fuel, silicone gas exposure, burner issue.	Ensure only clean kerosene is used. Avoid using spray products containing silicone near the heater. If the issue persists, professional service may be required.

If the problem persists after trying these solutions, please contact TOYOTOMI customer support.

SPECIFICATIONS

Feature	Detail
Model Number	LR-680F(B)
Brand	TOYOTOMI
Color	Black
Dimensions (H x W x D)	56 cm x 70.4 cm x 35.5 cm (22.0 x 27.7 x 14.0 inches)
Weight	21 kg (48.5 lbs)
Heating Output	6.79 kW - 2.60 kW
Fuel Tank Capacity	6.5 Liters
Applicable Room Size (Concrete)	Up to 24 tatami (39.5 m ²)

Feature	Detail
Applicable Room Size (Wooden)	Up to 18 tatami (29.5 m ²)
Power Source	Kerosene
Power Consumption (during icon lighting)	18W / 19W (50/60Hz)
Country of Origin	Japan

WARRANTY AND CUSTOMER SUPPORT

Warranty Information

This TOYOTOMI Kerosene Fan Heater LR-680F(B) comes with a **3-year manufacturer's warranty** from the date of purchase. This warranty covers defects in materials and workmanship under normal use. Please retain your proof of purchase for warranty claims.

The warranty does not cover damage caused by misuse, improper installation, unauthorized repairs, or the use of incorrect fuel.

Customer Support

For technical assistance, warranty claims, or inquiries about replacement parts, please contact TOYOTOMI customer support. Contact details can typically be found on the TOYOTOMI official website or on your product packaging. When contacting support, please have your model number (LR-680F(B)) and purchase date available.

