

Bosch 00171217

Bosch 00171217 Tumble Dryer Door Interlock Switch Instruction Manual

1. INTRODUCTION

This instruction manual provides essential information for the Bosch 00171217 Tumble Dryer Door Interlock Switch. This component is an original replacement part designed to ensure the safe and proper operation of compatible tumble dryers by preventing the appliance from running when the door is open. Please read this manual thoroughly before attempting any installation or repair.

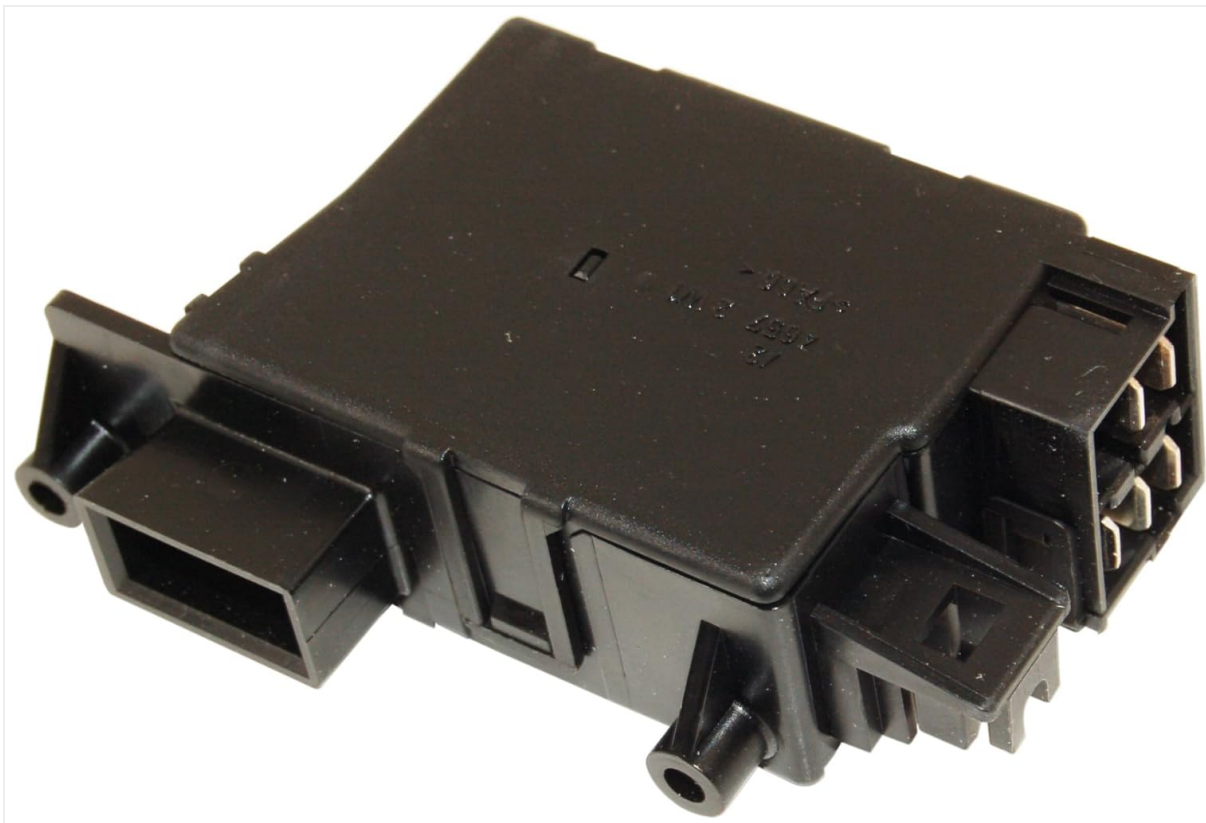
2. SAFETY INFORMATION

Warning: Always disconnect the appliance from the main power supply before attempting any installation, maintenance, or repair work. Failure to do so can result in electric shock, injury, or death.

- Installation and repair of electrical components should only be performed by a qualified and competent technician.
- Wear appropriate personal protective equipment (PPE) during installation.
- Ensure all connections are secure and correctly wired according to the appliance's service manual.
- Do not bypass or modify the door interlock switch, as this is a critical safety device.
- Keep children and pets away from the appliance during repair.

3. PRODUCT OVERVIEW

The Bosch 00171217 is an original equipment manufacturer (OEM) door interlock switch for tumble dryers. It is a crucial safety component that detects whether the dryer door is securely closed and locked, allowing the drying cycle to begin only when safe. This switch typically features electrical terminals for connection to the dryer's control system and a mechanical latching mechanism.



A black rectangular plastic component with electrical terminals on one side and a latching mechanism on the other, designed to secure the tumble dryer door and enable operation.

4. COMPATIBILITY

This door interlock switch (part number 00171217) is compatible with various Bosch, Neff, and Siemens tumble dryer models. Please verify your appliance's model number against the list below to ensure compatibility:

- **Bosch Models:** WTA3400GB/01, WTA3500/01, WTA3500/02, WTA3500/04, WTA3500/06, WTA3500/08, WTA3500CH/01, WTA3500CH/02, WTA3500CH/04, WTA3500CH/06, WTA3500CH/08, WTA3500FG/01, WTA3500FG/02, WTA3500FG/04, WTA3500FG/06, WTA3500FG/08, WTA3500GB/01, WTA3500GB/02, WTA3500GB/04, WTA3500GB/06, WTA3500GB/08, WTA3600GB/01, WTA3606GB/01, WTE5820GB/01, WTE5820GB/02, WTE5820GB/04, WTE5820GB/08, WTE6920GB/01, WTE6920GB/04, WTL5400GB/01, WTL5400GB/02, WTL5400GB/04, WTL5400GB/08, WTL5500GB/01, WTL5600GB/01, WTL5600GB/02.
- **Neff Models:** R4380X0EU/02, R4380X0EU/04, R4380X0EU/08, R4381X1EU/01, R4381X1EU/04, R4381X1GB/01, R4381X1GB/04.
- **Siemens Models:** WT66080GB/02, WT6608VGB/02, WT75080GB/01, WT78020GB/01, WT78020GB/02, WT78020GB/04, WT78020GB/08, WT79020EU/01, WT79020EU/04, WT79020GB/04.

5. INSTALLATION

The installation of a door interlock switch requires technical knowledge and should ideally be performed by a qualified appliance technician. Incorrect installation can lead to appliance malfunction or safety hazards. The following steps are general guidelines:

1. **Disconnect Power:** Ensure the tumble dryer is completely disconnected from the electrical supply.

2. **Access the Switch:** Depending on your dryer model, you may need to remove the top panel, front panel, or other components to access the existing door interlock switch. Refer to your specific dryer's service manual for detailed instructions.
3. **Identify Connections:** Carefully note the wiring connections to the old switch. It is recommended to take a photograph before disconnecting any wires.
4. **Remove Old Switch:** Disconnect the wiring and unmount the old door interlock switch from its housing.
5. **Install New Switch:** Mount the new Bosch 00171217 switch in the same position as the old one.
6. **Connect Wiring:** Reconnect the wiring to the new switch, ensuring all connections are firm and correct according to your notes or photograph.
7. **Reassemble Appliance:** Carefully reassemble any panels or components that were removed.
8. **Test Functionality:** Restore power to the dryer. Close the door and attempt to start a cycle. The dryer should only operate when the door is fully closed and the switch engages. Open the door during a cycle to ensure the dryer stops immediately.

6. OPERATING PRINCIPLE

The door interlock switch functions as a safety mechanism. When the tumble dryer door is closed, a latch or pin on the door engages with the switch. This engagement completes an electrical circuit, signaling to the dryer's control board that the door is securely shut. Only then will the dryer allow a cycle to start or continue. If the door is opened during operation, the switch disengages, breaking the circuit and immediately stopping the dryer for safety.

7. MAINTENANCE

The Bosch 00171217 door interlock switch is designed for durability and typically requires minimal maintenance. However, regular inspection can help ensure its longevity and proper function:

- **Visual Inspection:** Periodically check the area around the door latch and switch for any signs of physical damage, wear, or debris accumulation.
- **Cleaning:** If accessible, gently clean any lint or dust that may accumulate around the switch mechanism using a soft brush or vacuum cleaner. Ensure the appliance is unplugged before cleaning.
- **Door Alignment:** Ensure the dryer door is properly aligned and closes without excessive force. Misalignment can put undue stress on the switch mechanism.

8. TROUBLESHOOTING

If your tumble dryer is experiencing issues related to the door interlock switch, consider the following common problems and solutions:

- **Dryer Not Starting:** If the dryer does not start when the door is closed, ensure the door is fully latched. A faulty door interlock switch is a common cause.
- **Dryer Stops Mid-Cycle:** If the dryer unexpectedly stops during a cycle, check if the door has accidentally opened slightly or if the switch is intermittently failing.
- **Door Not Latching:** Inspect the door latch mechanism and the switch for any obstructions or damage that prevent proper engagement.
- **Error Codes:** Some modern dryers display error codes related to door switch malfunctions. Consult

your dryer's user manual for specific error code interpretations.

If troubleshooting steps do not resolve the issue, professional diagnosis and repair are recommended.

9. SPECIFICATIONS

Brand	Bosch
Model Number	00171217
Part Number	5054680127644
Product Type	Tumble Dryer Door Interlock Switch
Manufacturer	Bosch

10. WARRANTY AND SUPPORT

For warranty information regarding your Bosch 00171217 Tumble Dryer Door Interlock Switch, please refer to the documentation provided at the time of purchase or contact your retailer. For technical support or further assistance with installation and troubleshooting, it is recommended to contact a qualified appliance technician or the official Bosch customer service in your region.