

VENUS Lyra 25RD

Venus Lyra Digital 025RD 25-Litre Vertical Storage Water Heater User Manual

Model: Lyra 25RD

1. INTRODUCTION

This manual provides essential instructions for the safe and efficient installation, operation, and maintenance of your Venus Lyra Digital 025RD 25-Litre Vertical Storage Water Heater. Please read this manual thoroughly before using the appliance and retain it for future reference.

The Lyra Digital 025RD features a digital display and smart mode for monitoring power consumption, designed for reliable hot water supply.

2. SAFETY INSTRUCTIONS

Adhering to these safety guidelines is crucial to prevent injury and damage to the appliance.

- Ensure the water heater is installed by a qualified technician in accordance with local regulations and this manual.
- Do not operate the water heater if it is damaged or malfunctioning. Disconnect power immediately and contact service personnel.
- Never attempt to repair or modify the appliance yourself. Unauthorized repairs can be dangerous and void the warranty.
- Ensure the electrical supply matches the specifications indicated on the product label.
- Do not block the pressure relief valve. Regular checks of this valve are recommended.
- Keep flammable materials away from the water heater.
- Children should be supervised to ensure they do not play with the appliance.

3. PACKAGE CONTENTS

Verify that all items are present and undamaged upon unpacking:

- Venus Lyra Digital 025RD Water Heater Unit
- Wall clamp with fitting screws
- Remote control

- User manual (this document)
- Guarantee card

4. PRODUCT OVERVIEW

The Venus Lyra Digital 025RD is a 25-litre vertical storage water heater equipped with advanced features for user convenience and energy efficiency.



Figure 1: Front view of the Venus Lyra Digital 025RD water heater, showcasing its white and blue casing, digital display, and the accompanying remote control.

Key Features:

- **Digital Display:** Provides real-time temperature readings and operational status.
- **Smart Mode:** Allows tracking of power consumption for energy management.
- **Remote Control:** Conveniently adjust settings from a distance.
- **Fast Heating:** Efficiently heats water to the desired temperature.
- **Vertical Storage Design:** Space-saving installation.

Understanding Water Heater Capacity:

The 25-litre capacity of this storage water heater is suitable for specific household needs. Refer to the general capacity guide below for context.

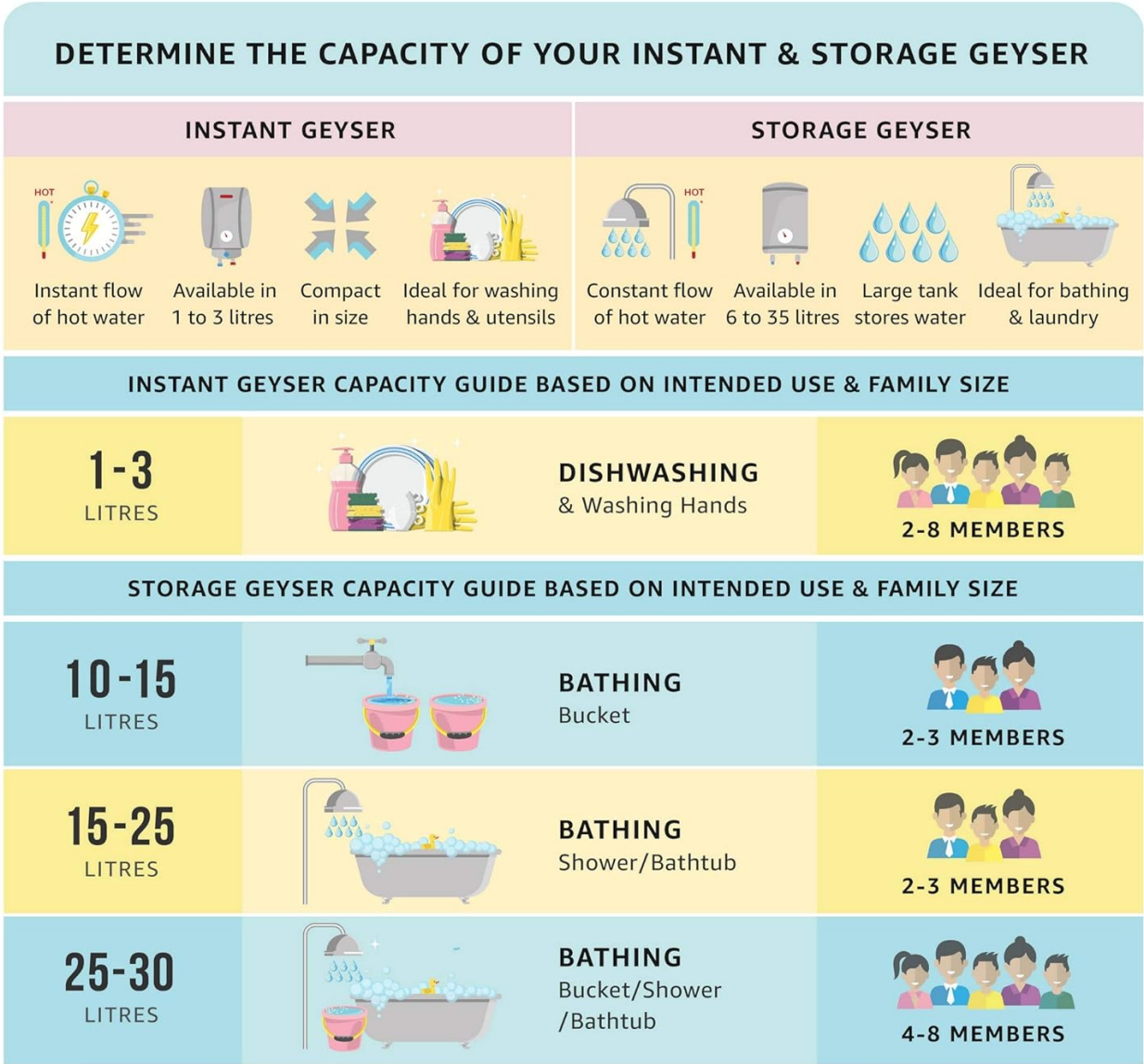


Figure 2: An infographic illustrating recommended water heater capacities (in liters) for different uses and family sizes, distinguishing between instant and storage geysers. A 25-litre storage geyser is typically suitable for bathing with a shower/bathtub for 2-3 members.

5. INSTALLATION

Important: Installation must be performed by a certified plumber or qualified technician to ensure safety and proper functioning. Incorrect installation can lead to electric shock, water leakage, or damage to the appliance.

5.1 Site Selection:

- Choose a vertical wall location capable of supporting the full weight of the water heater when filled (approximately 40 kg).
- Ensure adequate clearance around the unit for maintenance and ventilation.

- The location should be protected from freezing temperatures and direct sunlight.
- Install close to the point of use to minimize heat loss in pipes.

5.2 Mounting the Unit:

1. Mark the drilling points on the wall using the provided wall clamp as a template.
2. Drill holes and insert appropriate wall plugs.
3. Securely fasten the wall clamp to the wall using the provided screws.
4. Carefully lift and hang the water heater onto the wall clamp, ensuring it is stable and level.

5.3 Plumbing Connections:

1. Connect the cold water inlet (usually marked blue) to the main cold water supply.
2. Connect the hot water outlet (usually marked red) to the hot water distribution system.
3. Install a pressure relief valve (PRV) on the cold water inlet line, as per local codes.
4. Open the cold water supply valve and a hot water tap in your home to fill the tank and purge air. Close the tap once water flows steadily.
5. Check all connections for leaks.

5.4 Electrical Connection:

- Ensure the power supply is switched off at the main circuit breaker before making any electrical connections.
- Connect the water heater to a dedicated, properly grounded electrical circuit with appropriate voltage (230 Volts) and wattage (2000 Watts).
- Use a suitable circuit breaker and wiring as per electrical safety standards.

6. OPERATING INSTRUCTIONS

6.1 Initial Startup:

1. Ensure the water heater tank is completely filled with water (refer to Plumbing Connections step 5).
2. Switch on the electrical power supply to the water heater.
3. The digital display will illuminate, showing the current water temperature.

6.2 Using the Digital Display and Controls:

The front panel features a digital display and control buttons for direct operation.

- **Power Button:** Turns the unit ON/OFF.
- **Temperature Adjustment:** Use the UP/DOWN arrows to set the desired water temperature. The display will show the set temperature, then revert to current temperature.
- **Heating Indicator:** An LED ring or icon will indicate when the water heater is actively heating.

6.3 Using the Remote Control:

The remote control provides convenient access to all functions.

- **Power Button:** Same function as the unit's power button.
- **Temperature Adjustment (Up/Down Arrows):** Adjusts the target water temperature.
- **Menu/Mode Button:** Cycles through different operating modes or settings (e.g., Smart Mode, Timer).

- **OK Button:** Confirms selections.

6.4 Smart Mode and Timer Function:

- **Smart Mode:** Activate Smart Mode via the remote or unit controls to monitor and potentially optimize power consumption. Refer to the digital display for power usage indicators.
- **Timer Function:** Set specific times for the water heater to switch ON/OFF automatically. This feature helps conserve energy by heating water only when needed. Consult the remote control section for detailed timer setup instructions.

7. MAINTENANCE

Regular maintenance ensures the longevity and efficient operation of your water heater. Always disconnect power before performing any maintenance.

- **Exterior Cleaning:** Wipe the exterior casing with a soft, damp cloth. Do not use abrasive cleaners or solvents.
- **Pressure Relief Valve (PRV) Check:** Annually, manually operate the PRV to ensure it is not blocked. Follow the manufacturer's instructions for PRV testing.
- **Anode Rod Inspection/Replacement:** The anode rod protects the tank from corrosion. It should be inspected every 1-3 years and replaced if significantly depleted. This task should be performed by a qualified technician.
- **Descaling:** In areas with hard water, mineral deposits can accumulate inside the tank and on the heating element, reducing efficiency. Periodic descaling by a qualified technician may be necessary.
- **Drainage:** If the water heater will be out of use for an extended period or if there is a risk of freezing, drain the tank completely.

8. TROUBLESHOOTING

Before contacting customer support, review these common issues and their potential solutions.

Problem	Possible Cause	Solution
No hot water or insufficient hot water	No power supply Thermostat set too low Heating element failure Tank not full	Check circuit breaker and power connection. Increase temperature setting. Contact a qualified technician for inspection/replacement. Ensure tank is filled before switching on.
Water is too hot	Thermostat set too high	Decrease temperature setting.
Water leakage	Loose plumbing connections Faulty pressure relief valve Tank corrosion	Tighten connections (ensure power is off). Contact a qualified technician. Contact a qualified technician.
Unusual noises from heater	Sediment buildup in tank	Contact a qualified technician for descaling.

If the problem persists after attempting these solutions, please contact Venus customer support.

9. SPECIFICATIONS

Feature	Detail
Brand	VENUS
Model Number	Lyra 25RD
Capacity	25 Litres
Type	Vertical Storage Water Heater
Colour	White/Blue
Power Source	Electric
Wattage	2000 Watts
Voltage	230 Volts
Maximum Operating Pressure	8 Bars
Item Weight	15 kg 500 g
Item Dimensions (LxWxH)	37.4 x 37.7 x 53 Centimeters
Special Feature	Fast Heating, Digital Display, Smart Mode, Remote Control


10. WARRANTY AND SUPPORT

Your Venus Lyra Digital 025RD Water Heater comes with a **2-Year Warranty** from the date of purchase. Please refer to the included Guarantee Card for detailed terms and conditions.

For technical assistance, service requests, or warranty claims, please contact Venus customer support. Keep your purchase receipt and guarantee card handy when contacting support.

Manufacturer: Venus Water Heater

Related Documents - Lyra 25RD

<div><p>SW-3C 3 Band CW QRP Transceiver manual</p><p>Specifications: Power: 100W PEP (CW, SSB, FM) Frequency Range: 1.8 - 30 MHz Modes: CW, SSB, FM, AM, RTTY, FSK Antenna: 50 Ohm balanced Dimensions: 100mm (W) x 100mm (H) x 100mm (D) Weight: 1.0kg</p></div>	<p>SW-3C 3 Band CW QRP Transceiver Manual</p> <p>Comprehensive user manual for the SW-3C 3-band CW QRP transceiver, detailing specifications, connections, operation, transmit functions, CQ auto-call, and adjustment procedures.</p>
--	--

