

## VILTROX DC-70 II

# VILTROX DC-70 II 7-inch 4K HDMI Field Monitor Instruction Manual

Model: DC-70 II



## 1. INTRODUCTION

Thank you for choosing the VILTROX DC-70 II 7-inch 4K HDMI Field Monitor. This device is designed to enhance your photography and videography experience by providing a larger, clearer view of your camera's output. It features a high-resolution LCD panel and professional monitoring functions to assist with accurate focus and exposure. Please read this manual thoroughly before use to ensure proper operation and to maximize the monitor's capabilities.

## 2. PRODUCT OVERVIEW

### 2.1 Package Contents

The VILTROX DC-70 II package typically includes the following items:

- VILTROX DC-70 II Field Monitor
- Sunshade Hood
- Standard Shoe Mount Adapter
- HDMI Cables (Mini HDMI and Micro HDMI)
- NP-F550 Type Battery
- Battery Charger
- USB Cable
- User Manual
- Carrying Pouch



Image: All included accessories for the VILTROX DC-70 II Field Monitor, including the monitor, cables, battery, charger, and manual.

## 2.2 Monitor Components

Familiarize yourself with the monitor's physical components:

- **Front:** 7-inch TFT LCD panel, VILTROX branding.
- **Rear:** Battery plate for NP-F series batteries, HDMI IN, HDMI OUT, DC IN port, speaker.
- **Sides:** Control dial/button, headphone jack, USB port (for firmware updates/power).
- **Bottom:** 1/4-inch screw threads for mounting.



Image: Rear view of the VILTROX DC-70 II Field Monitor, highlighting HDMI In/Out, DC In, and the battery plate.

## 2.3 Key Features

- 7-inch TFT high-resolution LCD panel.
- Supports 4K HDMI input (downscales to native resolution).
- HDMI input and output for signal pass-through.
- Professional monitoring functions: Peaking Focus Assist, False Color, Brightness Histogram, Volume Bar, Pixel-by-pixel, Freeze, Zoom, Scan mode.
- Angle adjustment shoe adaptors for flexible positioning.
- Integrated sunshade hood for improved outdoor visibility.
- Built-in headphone jack and speaker for audio monitoring.

## 3. SETUP

### 3.1 Charging and Installing the Battery

1. Connect the provided battery charger to a power source and insert the NP-F550 type battery. The indicator light on the charger will show charging status.
2. Once fully charged, slide the battery into the battery plate on the rear of the monitor until it clicks into place.



Image: Illustration of the NP-F550 type battery being charged via a USB cable and then installed onto the monitor's battery plate.

### 3.2 Attaching the Sunshade Hood

The sunshade hood helps reduce glare and improve screen visibility in bright conditions.

1. Align the sunshade hood with the grooves around the monitor's screen.
2. Gently slide and secure the hood into place. Ensure it is firmly attached to prevent accidental detachment.



Image: Step-by-step visual guide for assembling and attaching the sunshade hood to the VILTROX DC-70 II Field Monitor.

### 3.3 Mounting the Monitor

Use the included shoe mount adapter to attach the monitor to your camera's hot shoe or a compatible rig.

1. Screw the shoe mount adapter into one of the 1/4-inch screw threads on the monitor (bottom or side).
2. Slide the shoe mount into your camera's hot shoe or a cold shoe mount on your rig.
3. Tighten the locking mechanism on the shoe mount to secure the monitor.



Image: The VILTROX DC-70 II Field Monitor mounted on a camera, demonstrating a typical setup.

### 3.4 Connecting to a Camera (HDMI)

The monitor connects to your camera via HDMI. Use the appropriate HDMI cable (Mini HDMI or Micro HDMI) for your camera model.

1. Connect one end of the HDMI cable to your camera's HDMI output port.
2. Connect the other end of the HDMI cable to the **HDMI IN** port on the VILTROX DC-70 II monitor.
3. If you need to pass the HDMI signal to another device, use the **HDMI OUT** port.





Image: Diagram illustrating the HDMI input and output connections on the VILTROX DC-70 II Field Monitor, showing connection to a camera.

## 4. OPERATING INSTRUCTIONS

### 4.1 Powering On/Off

Press and hold the power button (usually integrated with the control dial) for a few seconds to turn the monitor on or off.

### 4.2 Menu Navigation

The monitor features a multi-function control dial/button on the side for menu navigation. Press the dial to enter the menu, rotate to scroll through options, and press again to select. Some users may find this interface requires practice.

### 4.3 Monitoring Functions

The DC-70 II offers several professional monitoring tools:

- **Peaking Focus Assist:** Highlights sharp edges in the image, making it easier to achieve precise focus. You can often customize the peaking color.

### Peaking Focus Assist



Image: Visual representation of the Peaking Focus Assist feature, showing highlighted in-focus areas on the VILTROX DC-70 II Field Monitor.

- **False Color:** Displays different exposure levels as distinct colors, helping to identify overexposed or underexposed areas.

## False Color



Image: Visual representation of the False Color feature, indicating exposure levels with different colors on the VILTROX DC-70 II Field Monitor.

- **Brightness Histogram:** A graphical representation of the tonal distribution in your image, useful for checking exposure.



Image: Visual representation of the Brightness Histogram feature, showing the tonal distribution of an image on the VILTROX DC-70 II Field Monitor.

- **Volume Bar:** Displays audio levels, allowing you to monitor sound input from your camera.



# Volume Bar



Image: Visual representation of the Volume Bar display, showing audio levels on the VILTRON DC-70 II Field Monitor during a recording.

- **Pixel-by-pixel:** Displays the image at its native resolution without scaling.
- **Freeze:** Pauses the current frame on the monitor.
- **Zoom:** Magnifies a portion of the image for detailed inspection.
- **Scan Mode:** Adjusts the display area (e.g., underscan, overscan).

## 5. MAINTENANCE

- **Cleaning:** Use a soft, dry cloth to clean the monitor's body. For the screen, use a specialized LCD cleaning solution and a microfiber cloth. Avoid harsh chemicals.
- **Storage:** When not in use, store the monitor in its carrying pouch in a cool, dry place away from direct sunlight and extreme temperatures.
- **Battery Care:** Do not expose the battery to water or fire. Recharge the battery regularly, even if not in use, to maintain its lifespan.
- **Firmware:** Check the VILTRON official website periodically for firmware updates to ensure optimal performance and access to new features.

## 6. TROUBLESHOOTING

- **No image on screen:**
  - Ensure the monitor is powered on and the battery is charged.
  - Verify the HDMI cable is securely connected to both the camera and the monitor's **HDMI IN** port.
  - Check your camera's settings to ensure HDMI output is enabled and configured correctly.
- **Colors appear inaccurate:**
  - Navigate to the monitor's menu and adjust color settings (brightness, contrast, saturation, hue) to your preference.
  - Ensure your camera's color profile is set appropriately.
- **Monitor is laggy or unresponsive:**
  - Restart the monitor and the camera.



- Ensure the HDMI cable is not damaged.
- If using a long HDMI cable, try a shorter, higher-quality cable.
- **Difficulty navigating menu with control dial:**
  - The control dial may require precise movements. Practice rotating and pressing the dial gently but firmly.
- **No audio from speaker/headphone jack:**
  - Check the monitor's volume settings in the menu.
  - Ensure your camera is sending audio through the HDMI signal.
  - Test with different headphones if using the jack.

## 7. SPECIFICATIONS

Feature	Specification
Screen Size	7 inches
Resolution	1024 x 600 pixels
Input/Output	HDMI IN, HDMI OUT, DC IN
Power Source	NP-F series battery (e.g., NP-F550) or DC 8V-18V power adapter
Power Consumption	Approximately 5W
Dimensions	10.43 x 4.72 x 6.1 inches (26.5 x 12 x 15.5 cm)
Weight	1.98 pounds (0.9 kg)
Operating Temperature	-20°C to +60°C (-4°F to +140°F)
Storage Temperature	-30°C to +70°C (-22°F to +158°F)

## 8. WARRANTY INFORMATION

VILTROX products typically come with a limited manufacturer's warranty. For specific details regarding the warranty period and terms for your DC-70 II monitor, please refer to the warranty card included in your product packaging or visit the official VILTROX website. Keep your purchase receipt as proof of purchase for warranty claims.

## 9. SUPPORT

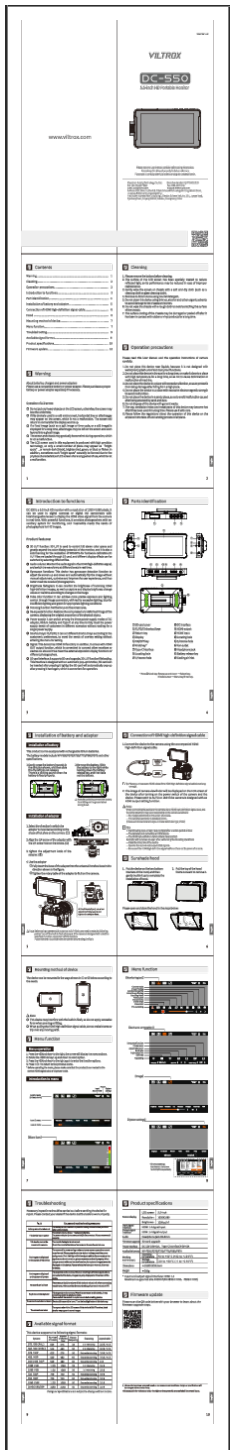
For further assistance, technical support, or inquiries, please contact VILTROX customer service:

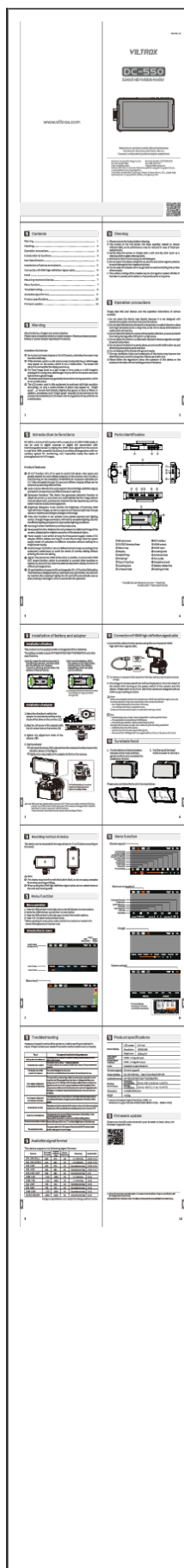
- **Website:** [www.viltrox.com](http://www.viltrox.com)
- **Email:** [info@viltrox.com](mailto:info@viltrox.com)
- **Phone:** 0755-2877-4730

VILTROX is committed to providing high-value products and support to its customers.



## Related Documents - DC-70 II

	<p><a href="#">Viltrox DC-550 5.5-inch HD Portable Monitor User Manual</a></p> <p>User manual for the Viltrox DC-550, a 5.5-inch HD portable monitor. This guide covers installation, operation, menu functions, troubleshooting, and specifications for the monitor, designed for use with digital cameras and camcorders.</p>
---	---

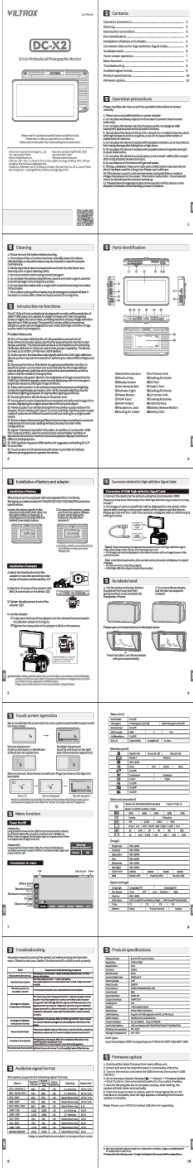


### [Viltrox DC-550 5.5-inch HD Portable Monitor User Manual](#)

User manual for the Viltrox DC-550, a 5.5-inch HD portable monitor with 1920x1080 resolution, featuring 3D LUT, audio monitoring, gyroscope, brightness histogram, false color, focus peaking, de-squeeze, multiple power options, and shortcut keys. Includes installation, operation, menu functions, troubleshooting, specifications, and available signal formats.

[Viltrox DC-550 Pro 5.5-inch Touchscreen HD Monitor User Manual](#)

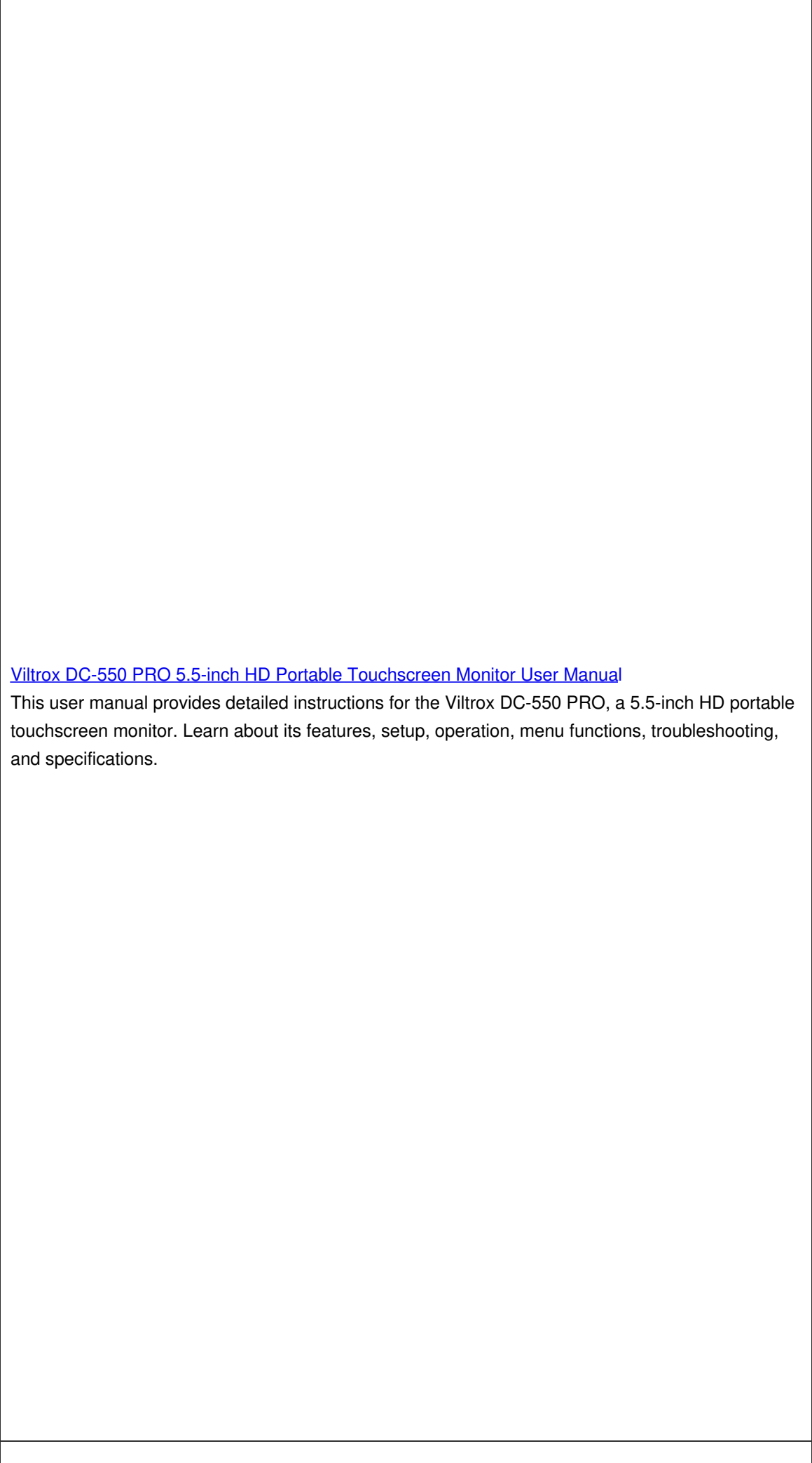
This user manual provides detailed instructions for the Viltrox DC-550 Pro, a 5.5-inch touchscreen HD monitor with a resolution of 1920x1080 pixels. It covers features, operation, installation, troubleshooting, and specifications for professional photography and videography.

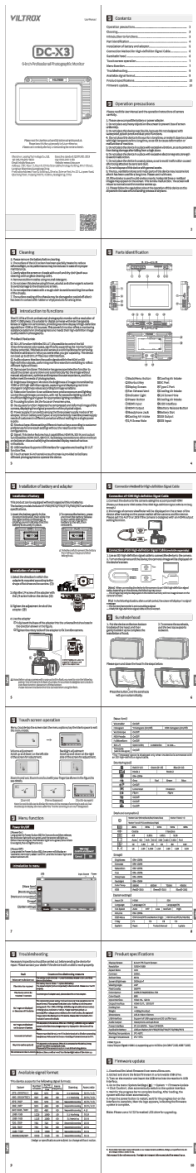


[Viltrox DC-X2 6-inch Professional Photography Monitor User Manual](#)

This user manual provides detailed instructions for the Viltrox DC-X2, a 6-inch professional photography monitor. It covers features such as 3D LUT, audio columns, gyroscope function, brightness histogram, false color, focus assist, and more. Learn about installation, operation, troubleshooting, and specifications.







### [Viltrox DC-X3 6-Inch Professional Camera Monitor User Manual](#)

This manual provides comprehensive instructions for the Viltrox DC-X3, a 6-inch professional camera monitor. It covers features like 3D LUT, audio monitoring, gyroscope function, brightness histogram, false color, focus assist, and more. Learn about component identification, battery installation, signal connections, touchscreen operation, menu functions, troubleshooting, available signal formats, product specifications, and firmware updates.

--	--	--